

## 2013 Minnesota Elk Harvest Report

Leslie McInenly, Big Game Program Leader  
Joel Huener, Wildlife Area Manager  
Christine Reisz, Area Wildlife Manager  
Graham Parson, Asst. Area Wildlife Manager

### Introduction

A limited number of licenses are offered to Minnesota residents to hunt elk. In 2013, there were two established zones: 1) Zone 20 - Kittson County Central and 2) Zone 30 - Kittson County Northeast (Figure 1). Zone 10 near Grygla, Minnesota, was closed in 2013 because the population was below goal (Figure 2). In 2013, there were four regular season hunts (September 14-22; September 28 – October 6; December 7-15; January 11-19, 2014). Hunts were held during the first season in both zones and during the remaining seasons only in zone 20. The early hunts are structured so that they fall within the breeding season when bull elk are most vulnerable and elk can be located by vocalizations. The later seasons are primarily used as a mechanism to harvest antlerless elk because patterns are more predictable, elk are in larger groups, and snow cover, when present, can aid in locating and tracking animals.

### Methods

All elk hunters are required to attend a mandatory orientation and if successful, they must register their animal through the local DNR office. Kill locations are mapped and various data are collected, including age/sex as well as biological samples for disease testing and other monitoring projects.

### Results

A total of 23 licenses were available and 974 individuals or parties applied for the opportunity to hunt elk (Table 1). As the number of either-sex licenses is limited, DNR receives an application for the area only. After winners are selected, the time period and license type is distributed through a second random drawing. In 2013, a total of 12 elk were harvested in the zones (Table 2). Long-term elk harvest for the zones is depicted in Table 3 on pages 3 and 4.

Table 1. License allocation and application numbers for three elk hunting zones, 2013.

Zone	Either-Sex	Antlerless	Bull-only	Total	Total Applicants
20 – Kittson Central	0	15	6	21	787
30 – Kittson NE	0	0	2	2	187
<b>Total</b>	<b>0</b>	<b>15</b>	<b>8</b>	<b>23</b>	<b>974</b>

Table 2. Distribution of the 2013 Minnesota elk harvest. License allocation totals represent the actual number sold, not the number authorized through rule.

Kittson County Central Hunt Zone (20)

Season	Bulls-only Licenses	Antlerless Licenses	Bulls taken	Antlerless taken	Total elk taken
September 14 - 22	2	3	2	2	4
Sept. 28 - Oct. 6	2	4	1	2	3
December 7 - 15	1	5	0	1	1
January 11 - 19	1	3	1	1	2
<b>Total</b>	<b>3</b>	<b>13</b>	<b>4</b>	<b>6</b>	<b>10</b>

Kittson County Northeast Hunt Zone (30)

Season	Bull-only Licenses	Bulls taken	Total elk taken
September 14 - 22	2	2	2
<b>Total</b>	<b>2</b>	<b>1</b>	<b>2</b>

Table 3. Grygla and Kittson County elk harvests, 1987-2013.

<b>Grygla</b>				
<b>Year</b>	<b>Bulls (or Either-Sex)</b>		<b>Antlerless</b>	
	<b>Permits</b>	<b>Harvest</b>	<b>Permits</b>	<b>Harvest</b>
1987	2	1	2	1
1996	2	2	7 (1 alternate)	6
1997	5 (2 alternate)	1	5 (2 alternate)	2
1998	4 (2 alternate)	2	0	0
2004	1	1	4	2
2005	1	0	4	0
2006	2	2	6	2
2007	0	0	6	6
2008	2	2	10	6
2009	2	3*	12	11
2010	2	1	5	3
2011	3	2	2	0
2012	2	1	3	0
2013	Closed	0	Closed	0
<b>Total</b>	<b>28</b>	<b>19</b>	<b>66</b>	<b>39</b>

<b>Kittson County (Combined)</b>				
<b>Year</b>	<b>Bulls (or Either-Sex)</b>		<b>Antlerless</b>	
	<b>Permits</b>	<b>Harvest</b>	<b>Permits</b>	<b>Harvest</b>
2008	1	1	10	10
2009	12	9 <sup>a</sup>	4	5
2010	1	1	3	3
2011	2	3 <sup>b</sup>	8 <sup>c</sup>	4
2012	5	4 <sup>d</sup>	13	3
2013	8	6	15	6
<b>Total</b>	<b>29</b>	<b>24</b>	<b>53</b>	<b>31</b>

<sup>a</sup> One additional bull (6x7) was wounded but not retrieved in 2009. It was found dead later and is counted in the total.

<sup>b</sup> One bull was a male calf and was legally tagged as an antlerless animal.

<sup>c</sup> Three unsuccessful hunters from the Grygla zone were invited to participate in the January extended season in Kittson County, however only 2 participated and were included in the number of antlerless permits issued.

<sup>d</sup> One bull was a sub-legal spike and was confiscated.

Figure 1. Kittson County Hunt Zones.

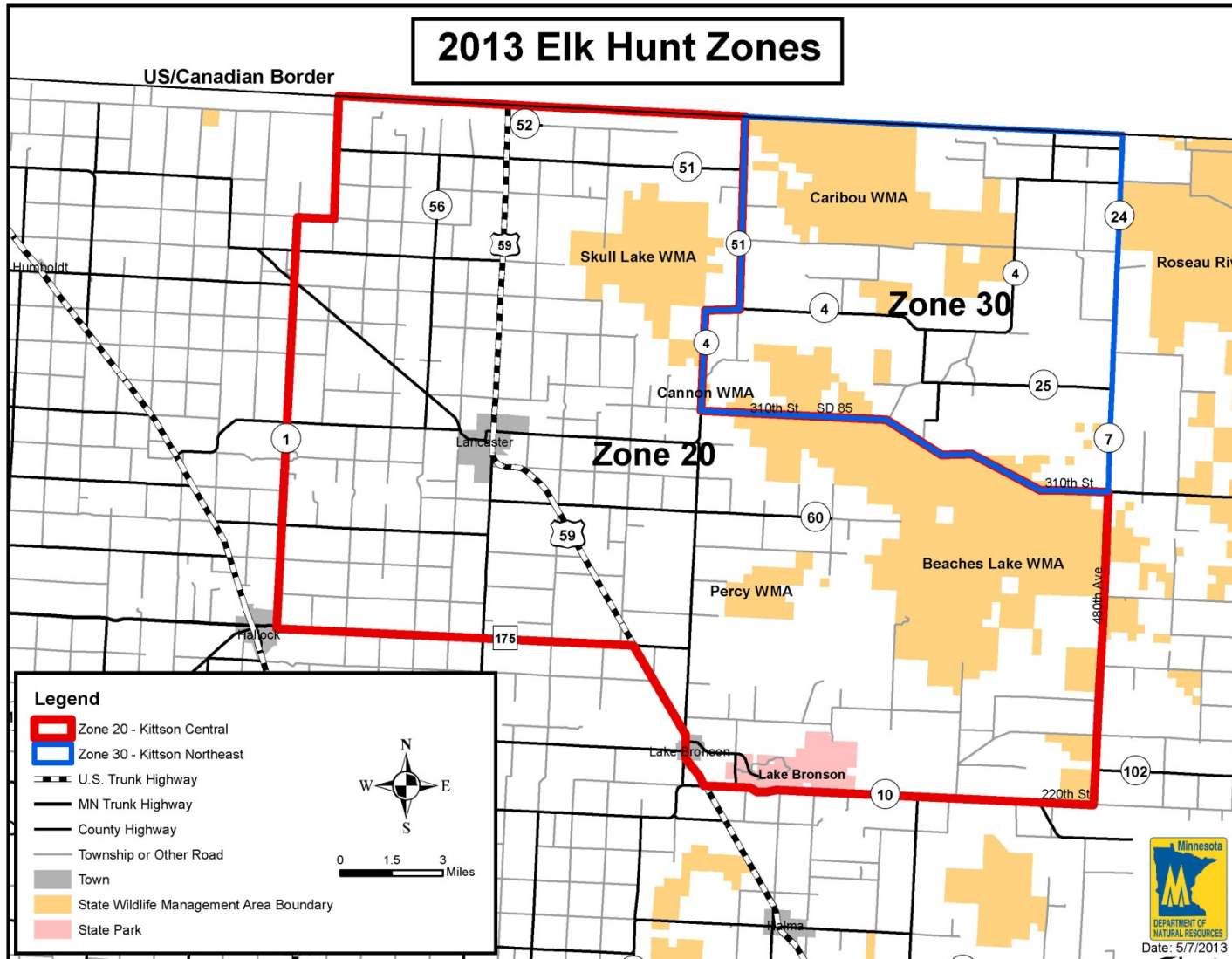


Figure 2. Grygla Hunt Zone.

