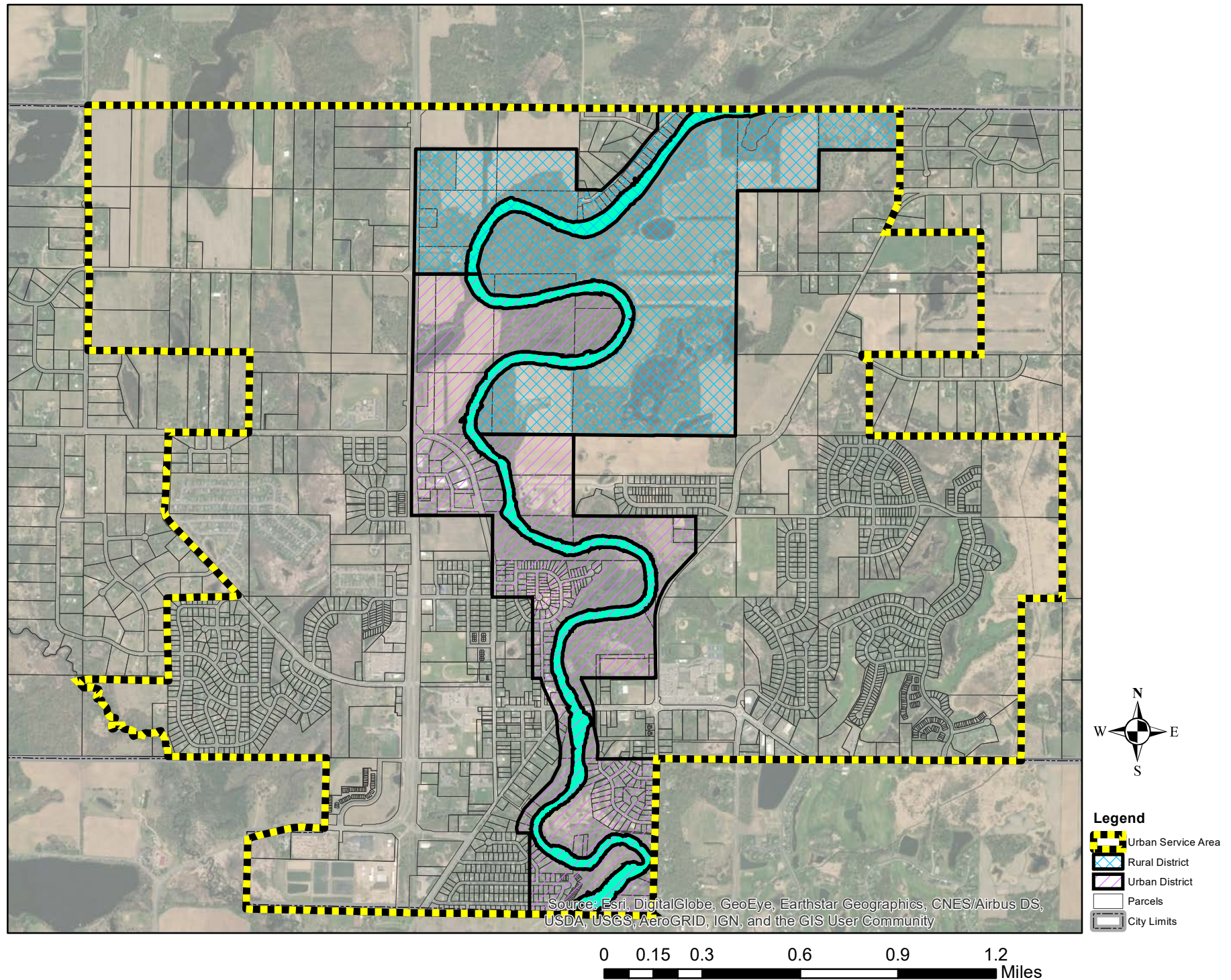
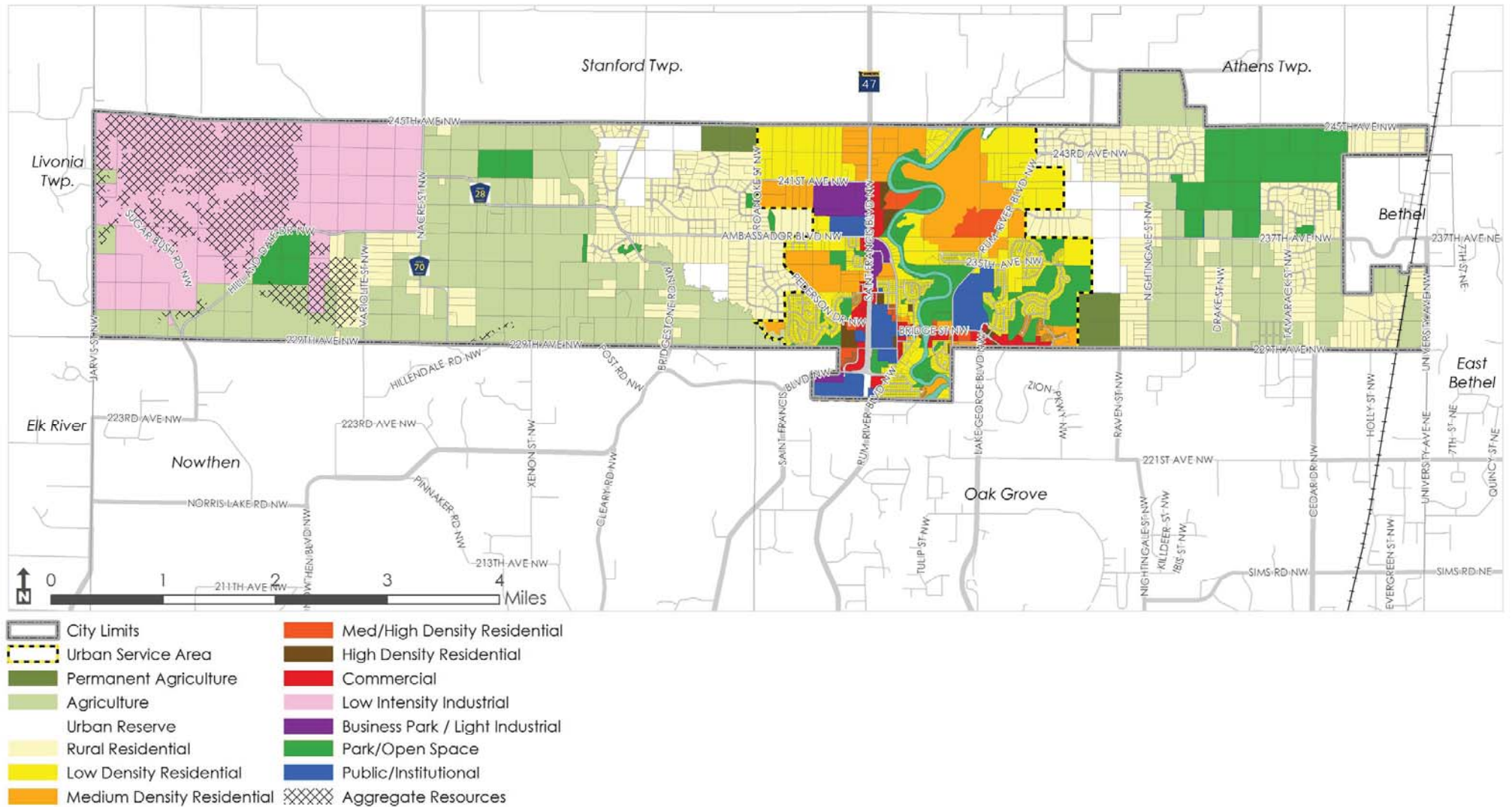


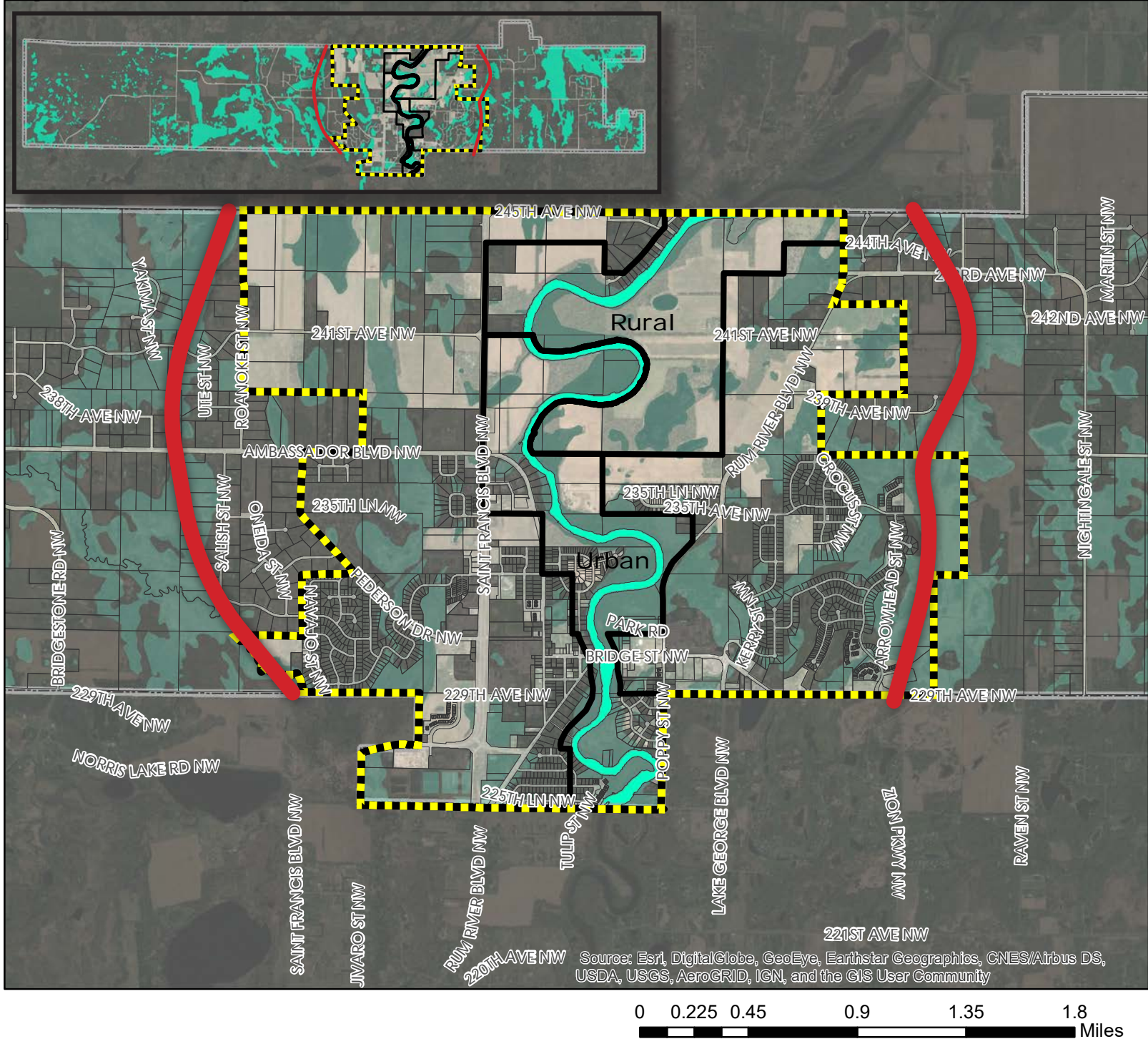
Map 1. Wild & Scenic Boundaries.



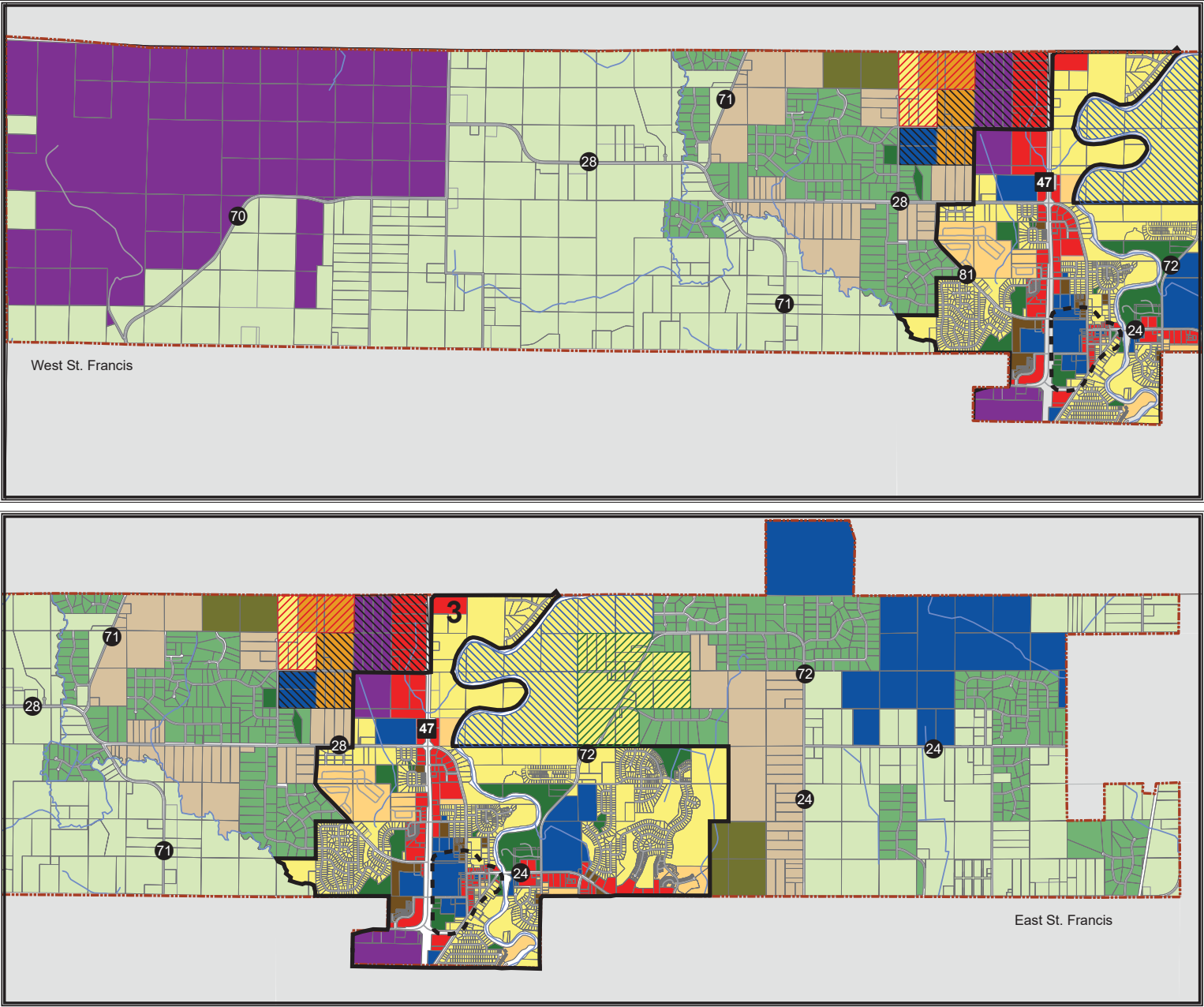
Map 2. 2040 Draft Future Land Use Map



The map displays the City of Grand Rapids, Michigan, with a red outline representing the city limits. A yellow dashed line indicates the proposed location of the Grand Rapids Water Treatment Plant. A red dashed line shows the proposed water distribution system. The map includes major roads such as 245th Avenue NW, 241st Avenue NW, 235th Avenue NW, 229th Avenue NW, 225th Avenue NW, 221st Avenue NW, 217th Avenue NW, 213th Avenue NW, 209th Avenue NW, 205th Avenue NW, 201st Avenue NW, 197th Avenue NW, 193rd Avenue NW, 189th Avenue NW, 185th Avenue NW, 181st Avenue NW, 177th Avenue NW, 173rd Avenue NW, 169th Avenue NW, 165th Avenue NW, 161st Avenue NW, 157th Avenue NW, 153rd Avenue NW, 149th Avenue NW, 145th Avenue NW, 141st Avenue NW, 137th Avenue NW, 133rd Avenue NW, 129th Avenue NW, 125th Avenue NW, 121st Avenue NW, 117th Avenue NW, 113th Avenue NW, 109th Avenue NW, 105th Avenue NW, 101st Avenue NW, 97th Avenue NW, 93rd Avenue NW, 89th Avenue NW, 85th Avenue NW, 81st Avenue NW, 77th Avenue NW, 73rd Avenue NW, 69th Avenue NW, 65th Avenue NW, 61st Avenue NW, 57th Avenue NW, 53rd Avenue NW, 49th Avenue NW, 45th Avenue NW, 41st Avenue NW, 37th Avenue NW, 33rd Avenue NW, 29th Avenue NW, 25th Avenue NW, 21st Avenue NW, 17th Avenue NW, 13th Avenue NW, 9th Avenue NW, 5th Avenue NW, 1st Avenue NW, 245th Street NW, 241st Street NW, 235th Street NW, 229th Street NW, 225th Street NW, 221st Street NW, 217th Street NW, 213th Street NW, 209th Street NW, 205th Street NW, 201st Street NW, 197th Street NW, 193rd Street NW, 189th Street NW, 185th Street NW, 181st Street NW, 177th Street NW, 173rd Street NW, 169th Street NW, 165th Street NW, 161st Street NW, 157th Street NW, 153rd Street NW, 149th Street NW, 145th Street NW, 141st Street NW, 137th Street NW, 133rd Street NW, 129th Street NW, 125th Street NW, 121st Street NW, 117th Street NW, 113th Street NW, 109th Street NW, 105th Street NW, 101st Street NW, 97th Street NW, 93rd Street NW, 89th Street NW, 85th Street NW, 81st Street NW, 77th Street NW, 73rd Street NW, 69th Street NW, 65th Street NW, 61st Street NW, 57th Street NW, 53rd Street NW, 49th Street NW, 45th Street NW, 41st Street NW, 37th Street NW, 33rd Street NW, 29th Street NW, 25th Street NW, 21st Street NW, 17th Street NW, 13th Street NW, 9th Street NW, 5th Street NW, 1st Street NW, 245th Avenue SE, 241st Avenue SE, 235th Avenue SE, 229th Avenue SE, 225th Avenue SE, 221st Avenue SE, 217th Avenue SE, 213th Avenue SE, 209th Avenue SE, 205th Avenue SE, 201st Avenue SE, 197th Avenue SE, 193rd Avenue SE, 189th Avenue SE, 185th Avenue SE, 181st Avenue SE, 177th Avenue SE, 173rd Avenue SE, 169th Avenue SE, 165th Avenue SE, 161st Avenue SE, 157th Avenue SE, 153rd Avenue SE, 149th Avenue SE, 145th Avenue SE, 141st Avenue SE, 137th Avenue SE, 133rd Avenue SE, 129th Avenue SE, 125th Avenue SE, 121st Avenue SE, 117th Avenue SE, 113th Avenue SE, 109th Avenue SE, 105th Avenue SE, 101st Avenue SE, 97th Avenue SE, 93rd Avenue SE, 89th Avenue SE, 85th Avenue SE, 81st Avenue SE, 77th Avenue SE, 73rd Avenue SE, 69th Avenue SE, 65th Avenue SE, 61st Avenue SE, 57th Avenue SE, 53rd Avenue SE, 49th Avenue SE, 45th Avenue SE, 41st Avenue SE, 37th Avenue SE, 33rd Avenue SE, 29th Avenue SE, 25th Avenue SE, 21st Avenue SE, 17th Avenue SE, 13th Avenue SE, 9th Avenue SE, 5th Avenue SE, 1st Avenue SE, 245th Street SE, 241st Street SE, 235th Street SE, 229th Street SE, 225th Street SE, 221st Street SE, 217th Street SE, 213th Street SE, 209th Street SE, 205th Street SE, 201st Street SE, 197th Street SE, 193rd Street SE, 189th Street SE, 185th Street SE, 181st Street SE, 177th Street SE, 173rd Street SE, 169th Street SE, 165th Street SE, 161st Street SE, 157th Street SE, 153rd Street SE, 149th Street SE, 145th Street SE, 141st Street SE, 137th Street SE, 133rd Street SE, 129th Street SE, 125th Street SE, 121st Street SE, 117th Street SE, 113th Street SE, 109th Street SE, 105th Street SE, 101st Street SE, 97th Street SE, 93rd Street SE, 89th Street SE, 85th Street SE, 81st Street SE, 77th Street SE, 73rd Street SE, 69th Street SE, 65th Street SE, 61st Street SE, 57th Street SE, 53rd Street SE, 49th Street SE, 45th Street SE, 41st Street SE, 37th Street SE, 33rd Street SE, 29th Street SE, 25th Street SE, 21st Street SE, 17th Street SE, 13th Street SE, 9th Street SE, 5th Street SE, 1st Street SE. The map also shows water bodies, including Lake George and Lake Michigan. A scale bar at the bottom indicates distances from 0 to 1.8 miles. The source of the map data is listed as Esri, DigitalGlobe, GeoEye, Earthstar Geographics, CNES/Airbus DS, USDA, USGS, AeroGRID, IGN, and the GIS User Community.



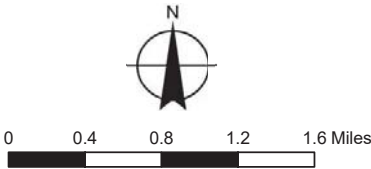
Map 4. 2030 Comprehensive Plan MUSA Boundaries.



2030 Comprehensive Plan

Future Land Use Plan

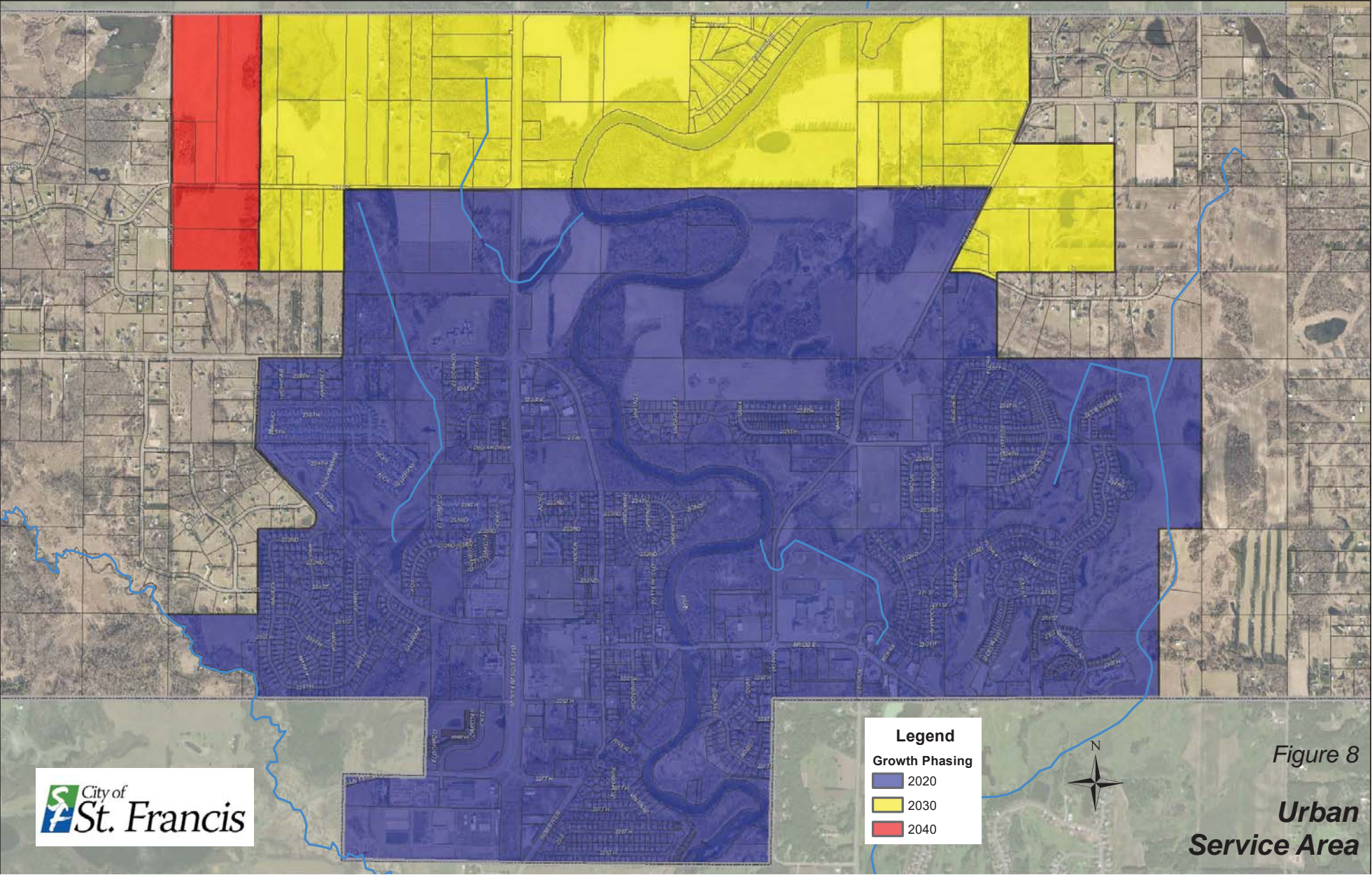
- LAND USE CATEGORIES**
- PERMANENT AGRICULTURE
 - RURAL RESIDENTIAL (NO MUSA)
 - AGRICULTURAL (MUSA POST 2030)
 - URBAN RESERVE
 - LOW DENSITY RESIDENTIAL (1.5-2.5)
 - MEDIUM DENSITY RESIDENTIAL (2.5-7)
 - MEDIUM-HIGH DENSITY RESIDENTIAL (2.5-18)
 - HIGH DENSITY RESIDENTIAL (7-18)
 - COMMERCIAL
 - INDUSTRIAL
 - PUBLIC
 - PARK
- MUSA STAGING**
- Current MUSA
 - 2010
 - 2015
 - 2020
 - 2025
 - City Boundary
 - Downtown District



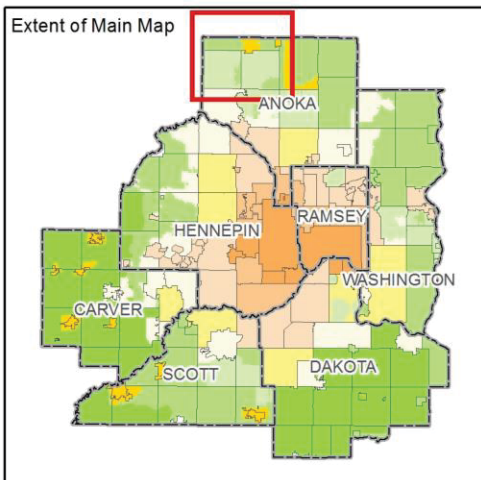
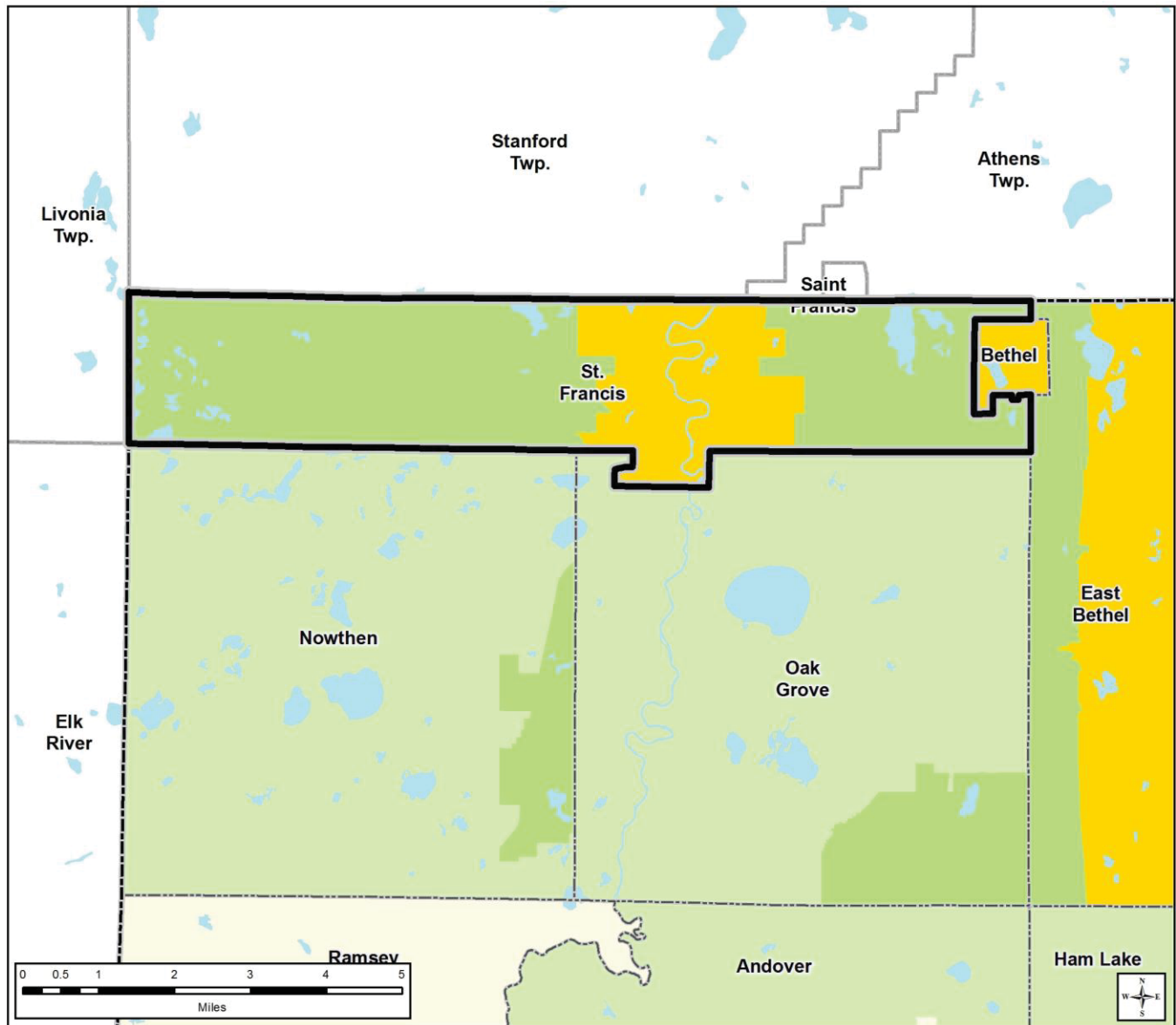
Source: Anoka County GIS; Minnesota DNR;
Bolton and Menk, Inc; Northwest Associated Consultants.
Adopted by the City Council Dec 08. Revised Feb 09.

NAC NORTHWEST ASSOCIATED CONSULTANTS, INC.
4000 Oliver Memorial Highway, Suite 200, Golden Valley, MN 55422
Telephone: 763.231.2505 Fax: 763.231.2561 plan@nacplanning.com

Map 5. 2040 Comprehensive Plan Phased Growth Areas.



Map 6. St. Francis Community Designation

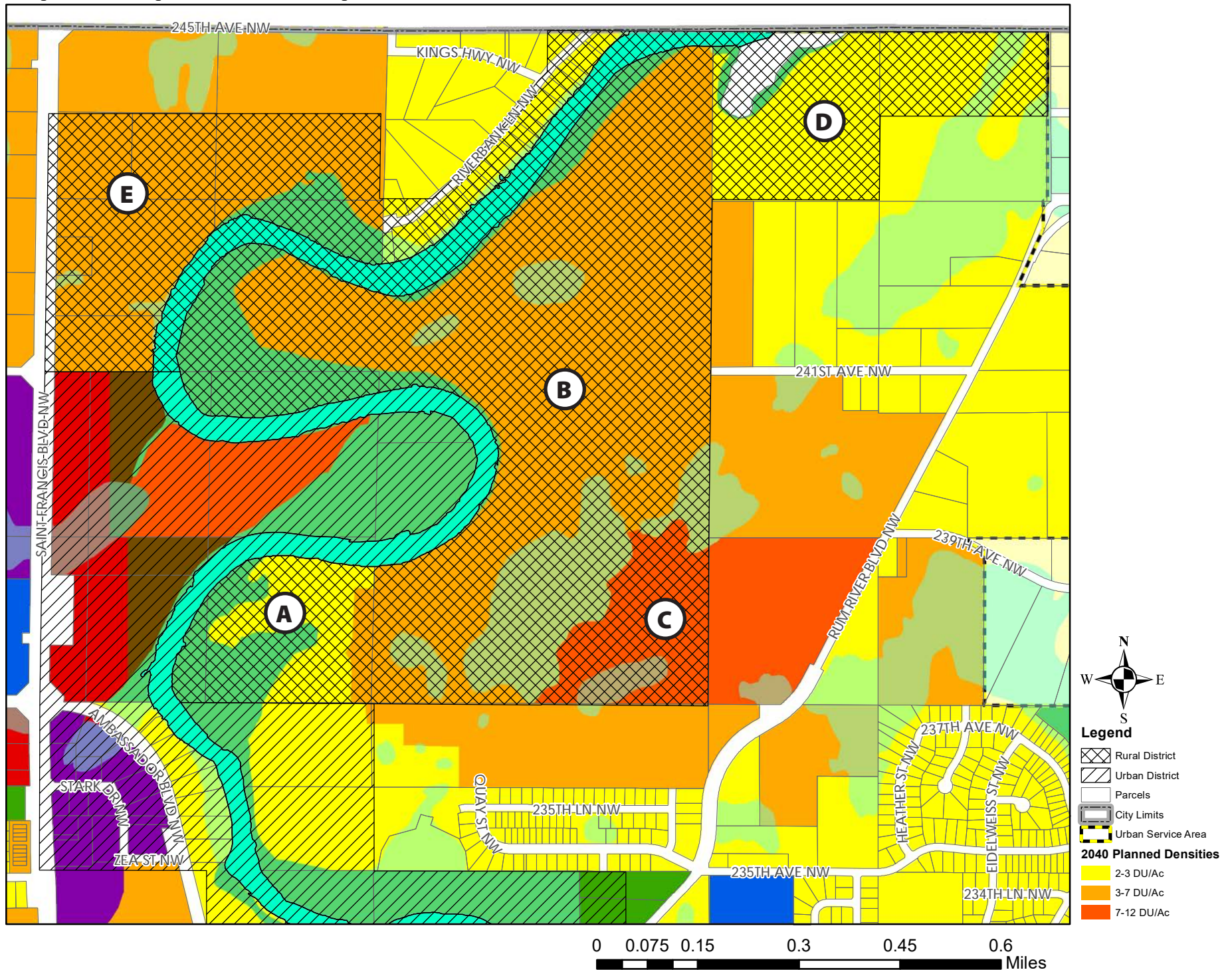


Community Designations

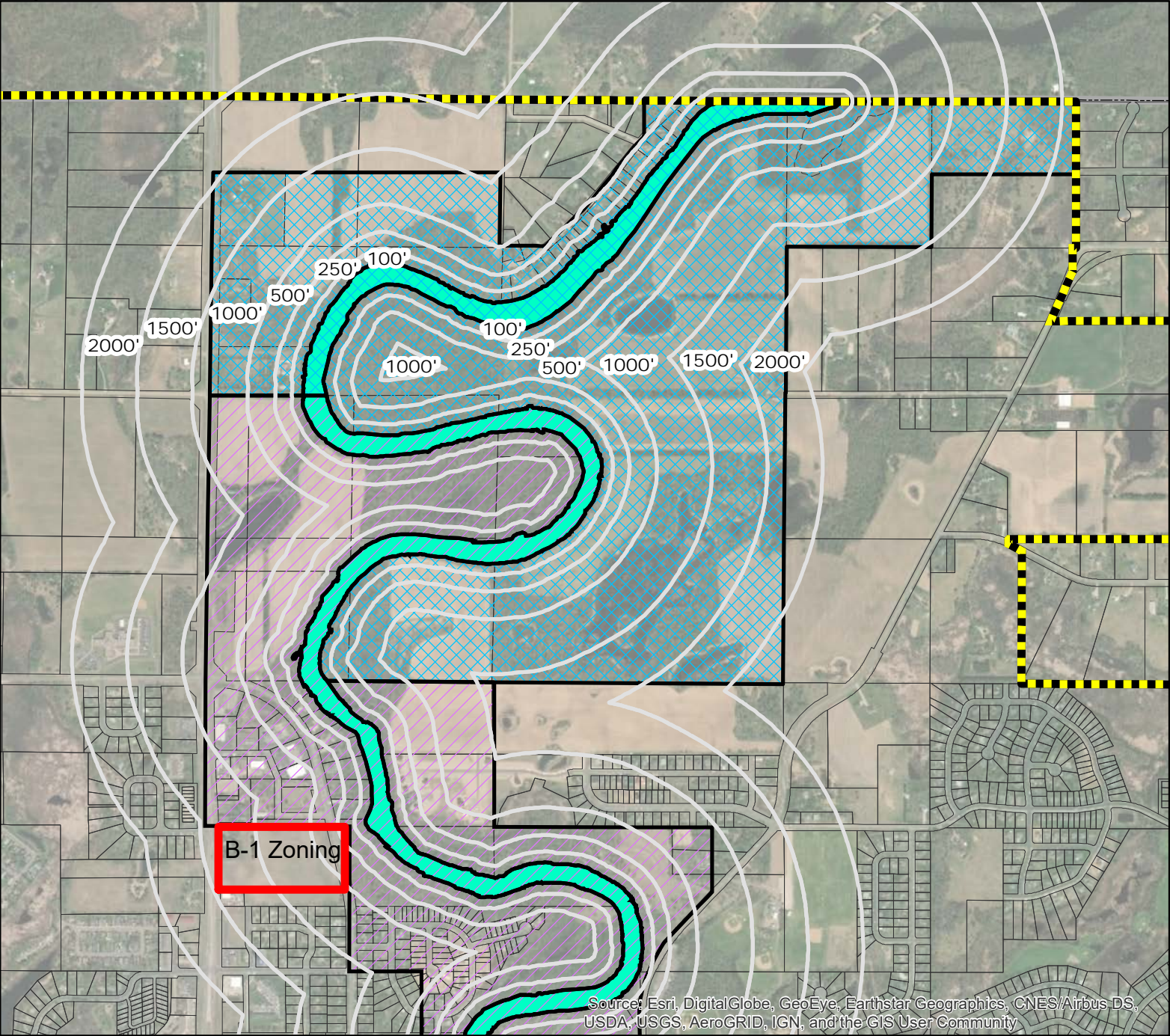
- | | |
|------------------------------------|------------------------|
| Outside Council planning authority | Emerging Suburban Edge |
| Agricultural | Suburban Edge |
| Rural Residential | Suburban |
| Diversified Rural | Urban |
| Rural Center | Urban Center |

- County Boundaries
- City and Township Boundaries
- Lakes and Major Rivers

Map 7. 2040 Proposed "Rural" Development Densities

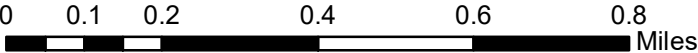


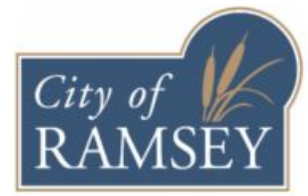
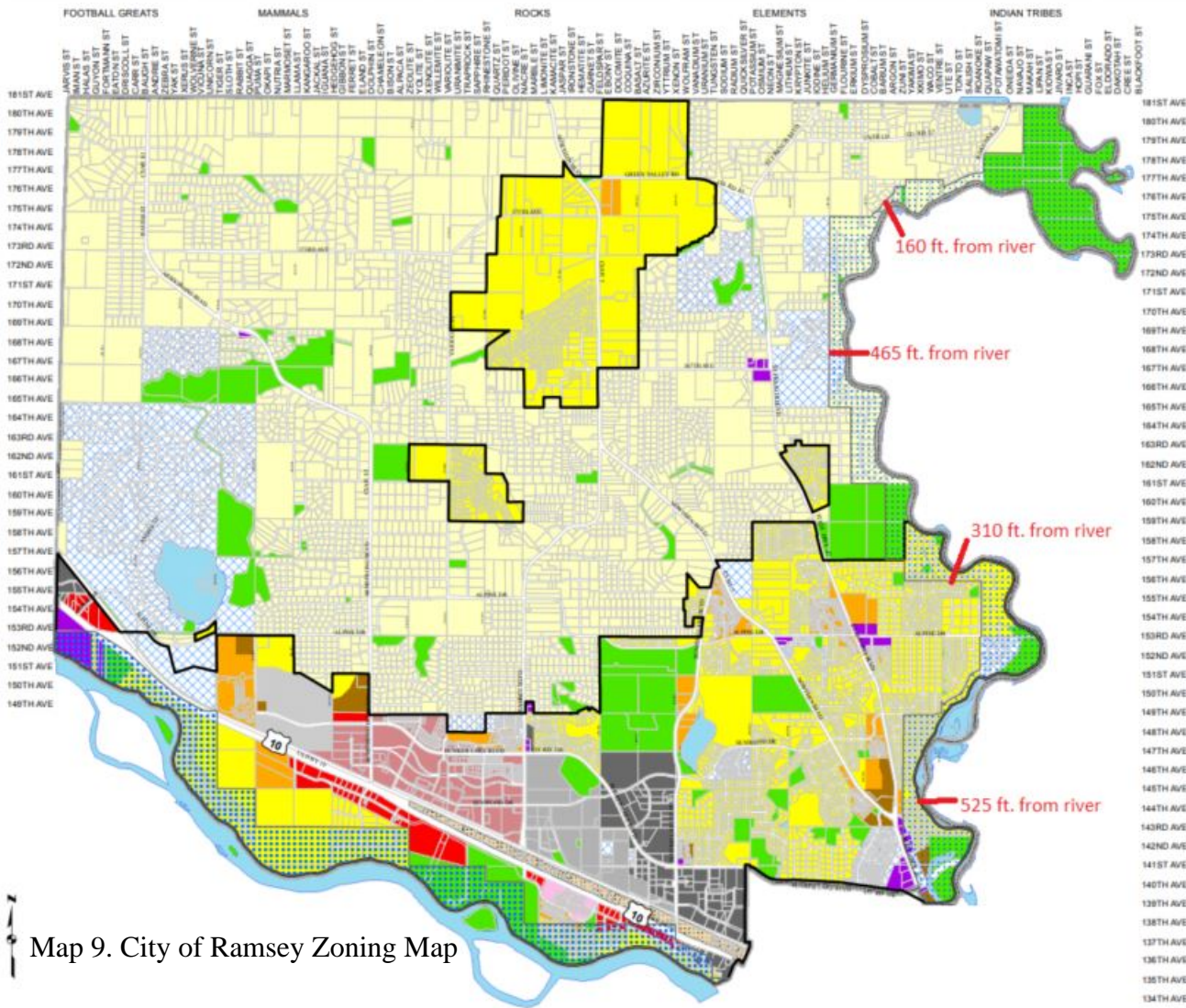
Map 8. "Rural" Land Distance from Rum River.



Legend

- Distance to Run River (ft)
- Urban Service Area
- Rural District
- Urban District
- Parcels
- City Limits





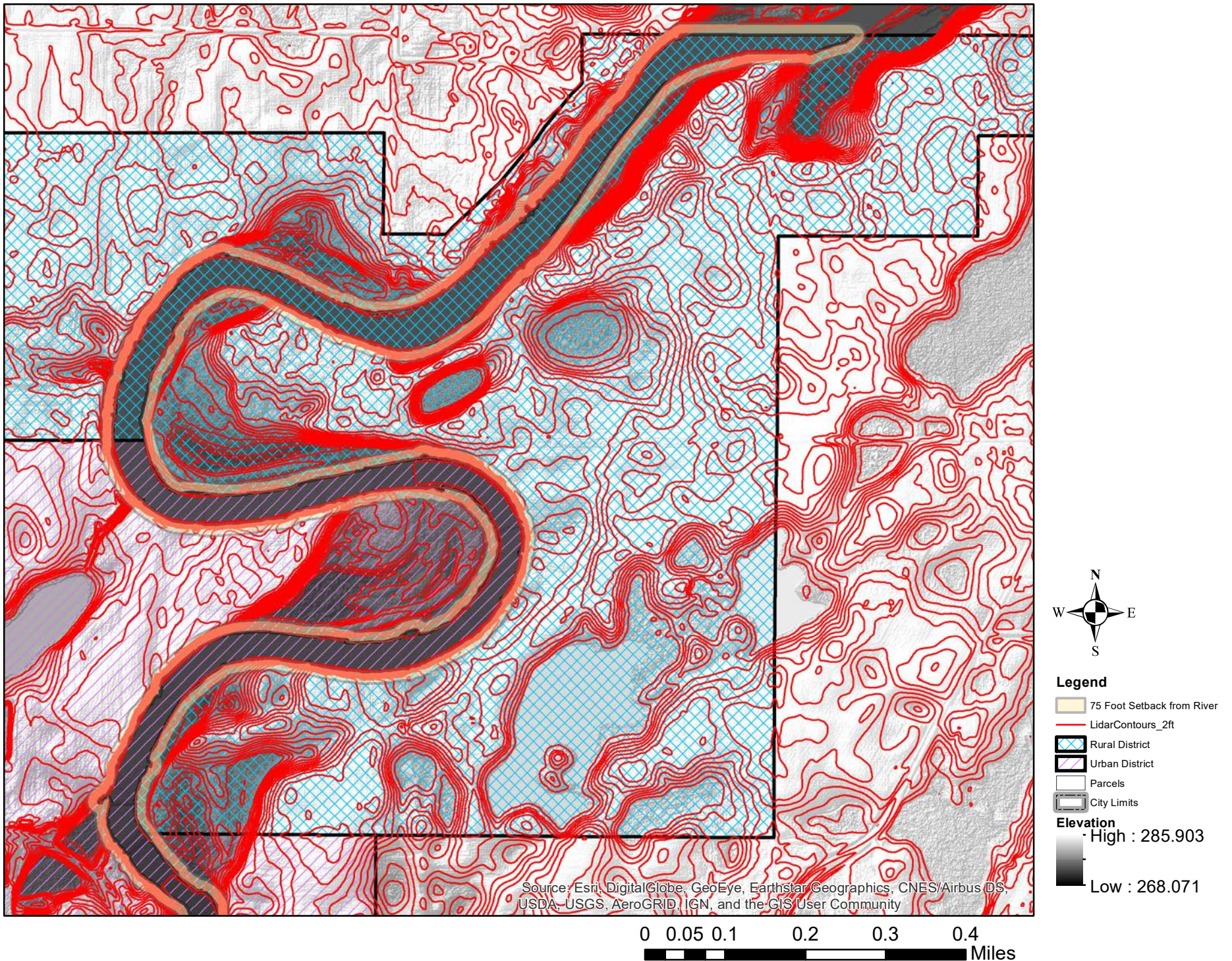
Official Zoning Map August 6, 2018

- Critical Area Boundary
- Wild and Scenic Rum
- MUSA 2030
- Zoning**
- R-1: Rural Developing (outside MUSA)
- R-1: MUSA
- R-2: Medium-Density Residential
- R-3: High-Density Residential
- B-1: Business District
- B-2: Business District
- H-1: Business District
- E-1: Employment District
- E-2: Employment District
- E-3
- MU-PUD: Mixed-Use, Planned Unit Development
- PUD: Planned Unit Development
- COR: The COR
- P: Public/Quasi-Public District

Map 7. City of Ramsey
Zoning Map

Map 9. City of Ramsey Zoning Map

Map 10. Ridgeline Along Rum River with 75' Setback



Map 11. Existing Sanitary Sewer.

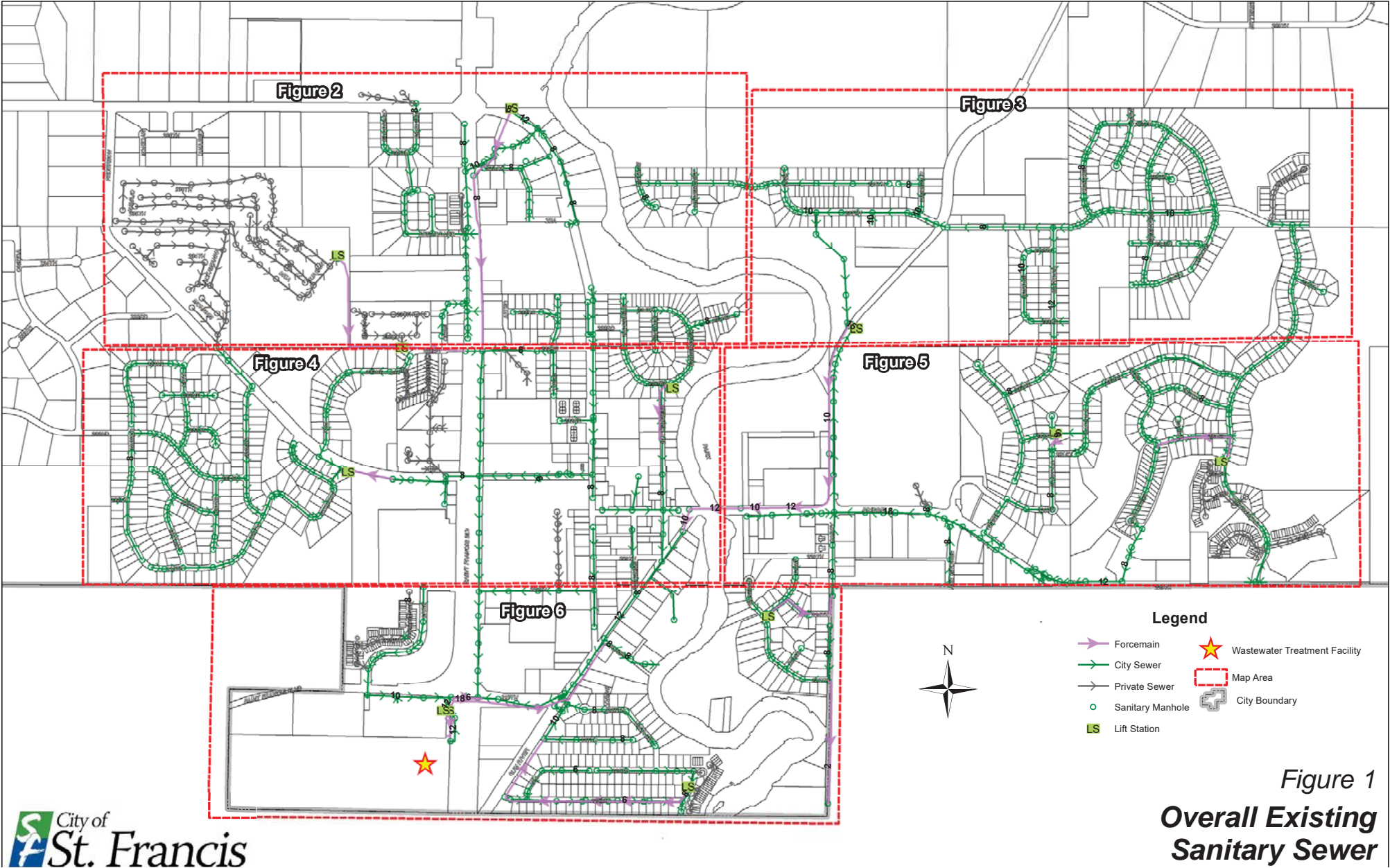


Figure 9

Legend

- City Watermain
- Private Watermain
- Well 1, 3, & 4
- Water Tower
- Water Treatment Facility
- Well House
- City Boundary



City of
St. Francis

Map 13. Vegetative Buffer Example.



0 0.0125 0.025 0.05 0.075 0.1 Miles

**CITY OF ST. FRANCIS
ST. FRANCIS, MN
ANOKA COUNTY**

RESOLUTION 2018-46

**A RESOLUTION APPROVING THE SUBMITTAL OF A VARIANCE APPLICATION
TO THE MINNESOTA DEPARTMENT OF NATURAL RESOURCES FOR A
VARIANCE FROM THE STANDARDS ESTABLISHED FOR RURAL LANDS IN THE
WILD AND SCENIC RIVER DISTRICT AS SPECIFIED IN MINNESOTA RULES
SECTIONS 6105.0010 – 6105.0250.**

Pursuant to due call and notice thereof, a regular meeting of the City Council of the City of St. Francis, Minnesota was held on the 3rd day of December, 2018. The following members were present: Mayor Steve Feldman; Councilmembers Robert Bauer and Jerry Tviet. Absent Joe Muehlbauer and Rich Skordahl.

Councilmember Tveit introduced the following resolution and moved its adoption:

WHEREAS, the Rum River has been designated by the Minnesota Department of Natural Resources (DNR) as a “Wild and Scenic” river; and,

WHEREAS, the Rum River Management Plan (Minnesota Rules 6105.1400 – 6105.1500) designated certain areas of land within the City of St. Francis adjacent to or near the Rum River as “rural” lands; and,

WHEREAS, the lands designated as “rural” by the Rum River Management Plan are subject to standards found in Minnesota Rules 6105.0010 – 6105.0250; and,

WHEREAS, City Staff have determined that a variance from the Minnesota Rules governing the lot requirements of rural lands along the Rum River is necessary to allow for the City’s growth in an efficient and sustainable pattern; and,

WHEREAS, the DNR requires that a resolution of support from the City’s governing body be submitted with the variance application; and,

NOW, THEREFORE, BE IT RESOLVED that the City Council of the City of St. Francis hereby supports seeking a variance from the DNR to vary from the standards established for rural lands in sections 6105.0010 – 6105.0250 of the Minnesota Rules.

BE IT FURTHER RESOLVED that the City Council of the City of St. Francis hereby approves the submittal of a variance application to the DNR for a variance from the standards established for rural lands in Wild and Scenic River District as specified in Minnesota Rules sections 6105.0010 – 6105.0250.

The motion for adoption of the foregoing resolution was duly seconded by Council Member Bauer and, upon vote being taken thereon, the following voted in favor thereof: Feldman, Bauer and Tveit. The following voted against or abstained: none.

Whereupon the resolution was declared duly passed and adopted the 3rd day of December, 2018.



Steven D. Feldman, Mayor

ATTEST:



Barbara I. Held, City Clerk

12/6/18

Date

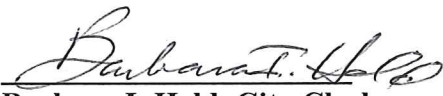


STATE OF MINNESOTA)
)
COUNTY OF ANOKA)
)
CITY OF ST. FRANCIS)

I, the undersigned, being duly qualified and acting Clerk of the City of St. Francis, Minnesota do hereby certify that I have carefully compared the attached Resolution No. 2018-46 with the original adopted at a regular meeting of the City Council held on December 3, 2018, and find that the attached Resolution No. 2018-46 is a full, true and complete copy of the original which was introduced by Council member Tveit seconded by Council member Bauer and unanimously adopted by the City Council with the following members present: Steve Feldman, Robert Bauer and Jerry Tveit

and following members absent: Joe Muehlbauer and Rich Skordahl

WITNESS MY hand as Clerk and the corporate seal of the City this 16th day of December, 2018.


Barbara I. Held, City Clerk
St. Francis, Minnesota