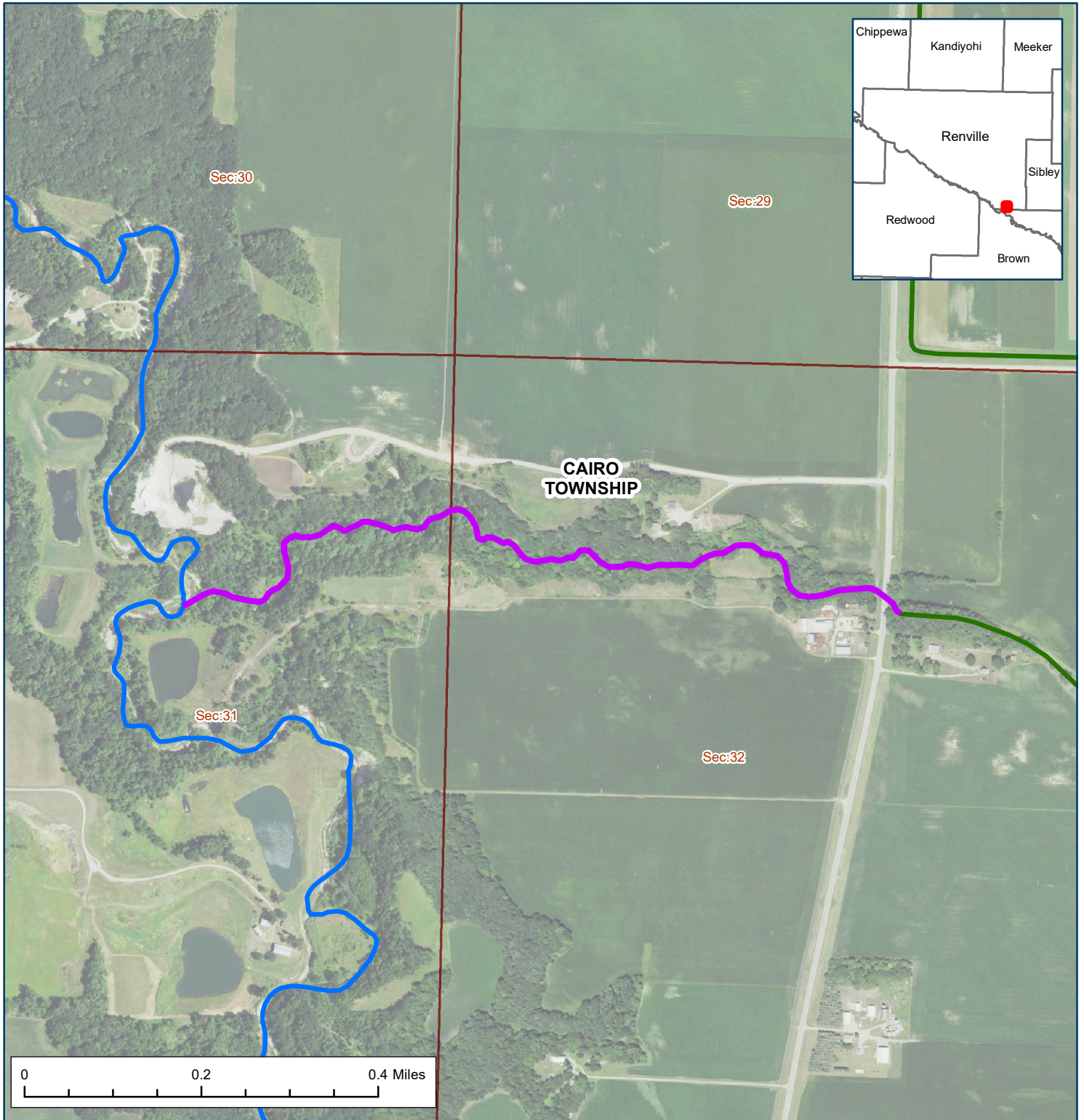


# Unnamed Stream



This is a map showing PWI watercourses removed with the April 2017 Commissioner's Order. These features are proposed to be re-added to the PWI.








## Renville County

1.0 mile segment

Kittle Number: M-055-110-002

Kittle Name: Unnamed Stream

6/26/2020

-  Public Water Removals per Commissioner's Order
-  Lakes, Reservoirs, and Wetlands
-  50-ft Buffer
-  Watercourses
-  16.5-ft Buffer
-  Public Land Survey Townships
-  Public Land Survey Sections

