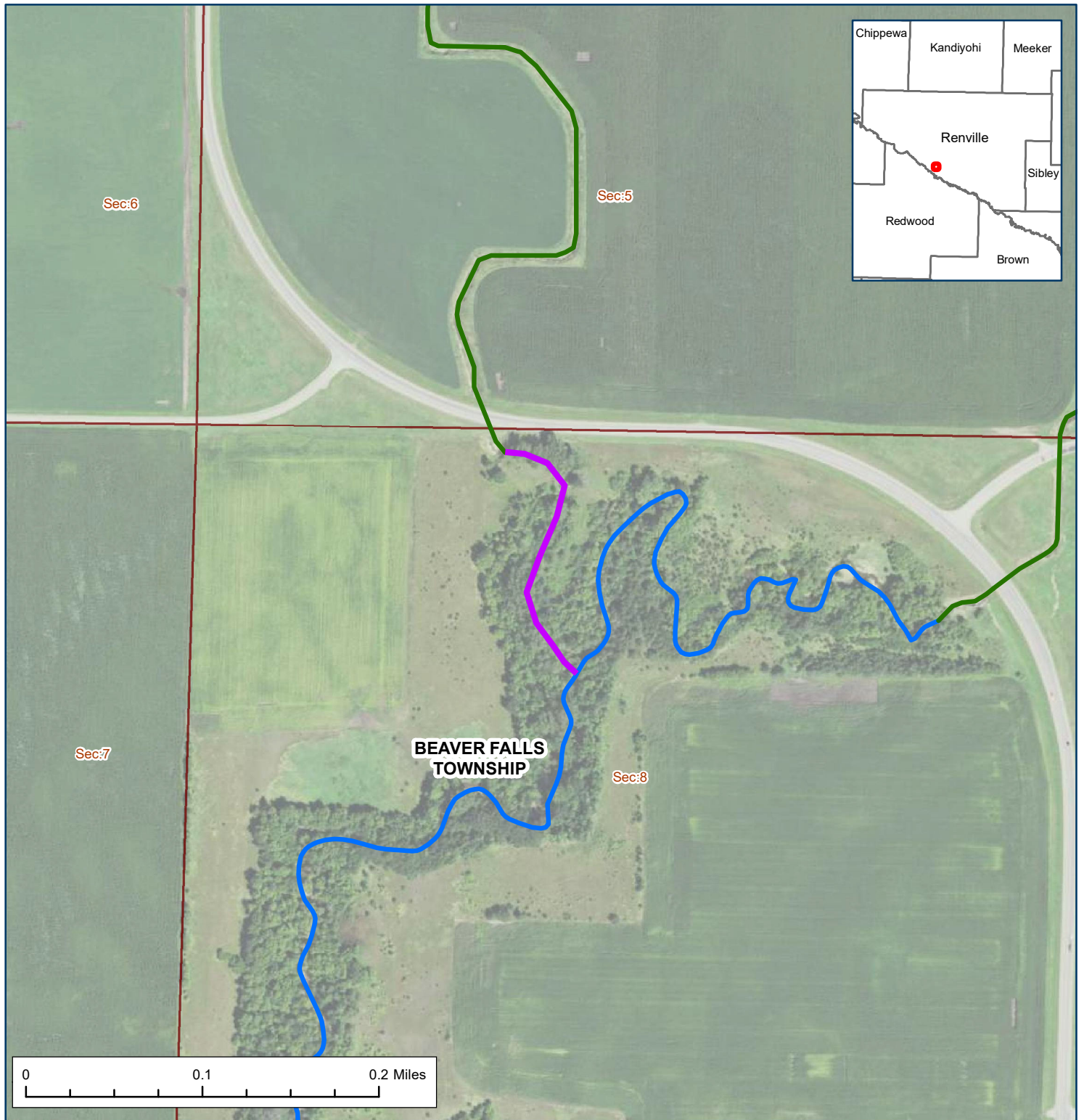


Outlet of County Ditch 130



This is a map showing PWI watercourses removed with the April 2017 Commissioner's Order. These features are proposed to be re-added to the PWI.

Renville County

0.16 mile segment

Kittle Number: M-055-128-002

Kittle Name: County Ditch 130

6/26/2020

- Public Water Removals per Commissioner's Order
- Lakes, Reservoirs, and Wetlands
- 50-ft Buffer
- Watercourses
- 50-ft Buffer
- 16.5-ft Buffer
- Public Land Survey Townships
- Public Land Survey Sections

