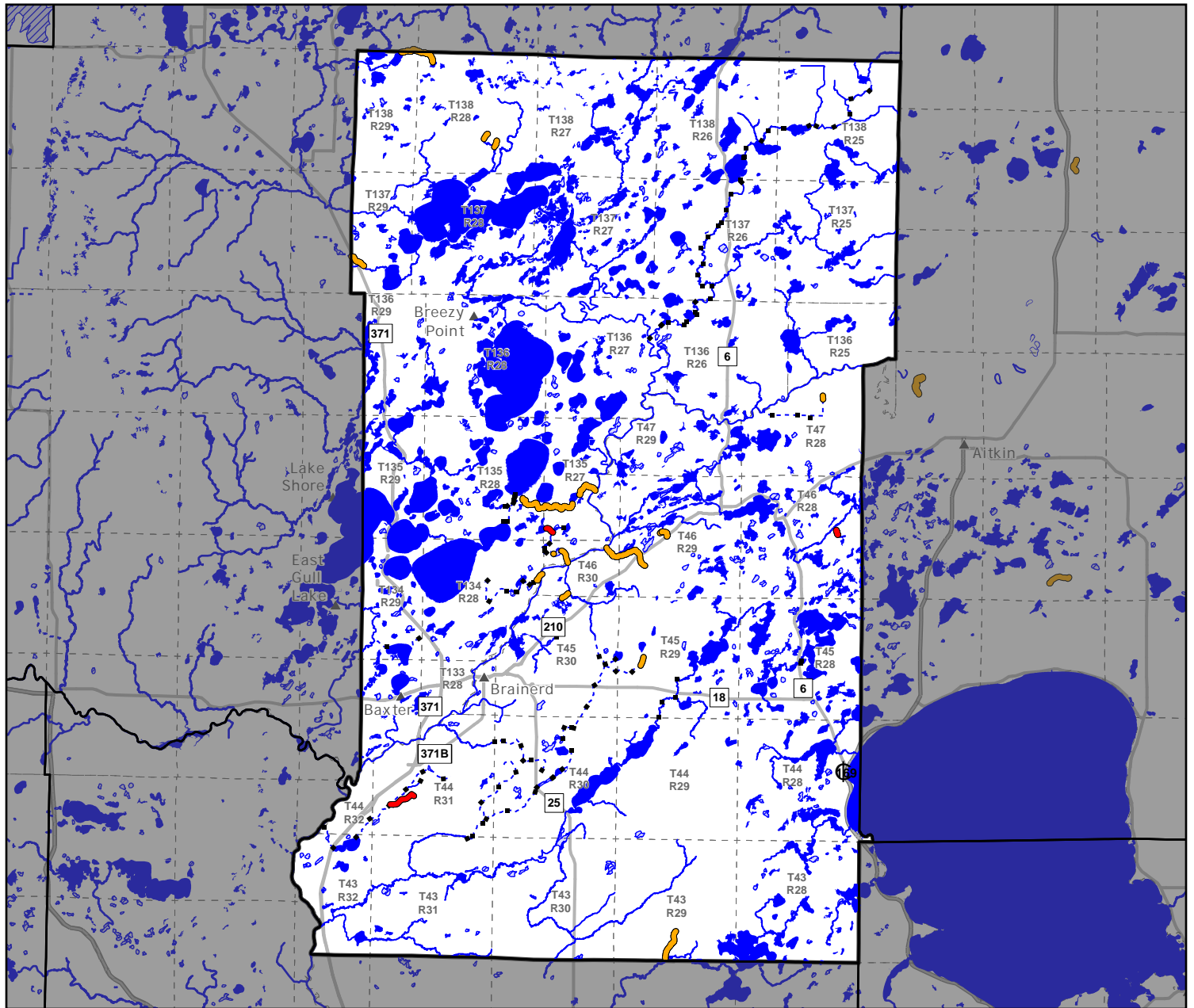


Public Waters Inventory Preliminary Map of Corrections

Crow Wing County

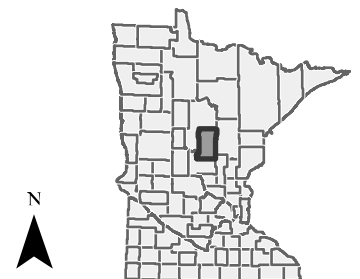
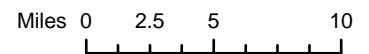
Public waters are defined in Minnesota Statute 103G. The boundaries of public waters shown on this map are drawn as accurately as possible, consistent with the map scale, but are still approximate. Public ditches are only shown where they overlap with public waters.



- Public Waters Natural Watercourse
- Public Waters Altered Natural Watercourse
- Public Ditch
- Add (0)
- Remove (3)
- Add (15)
- Remove (3)

- Public Waters Basin
- Public Waters Wetland
- Preliminary Recommendation
- Add (0)
- Remove (0)

- Major Cities
- US Trunk Highways
- MN Trunk Highways
- PLSS Townships



The State of Minnesota, the Minnesota Department of Natural Resources, nor their employees, make any representations or warranties, express or implied, with respect to the use of or reliance on the data provided herewith, regardless of its format or means of transmission. There are no guarantees or representations to the user as to the accuracy, currency, completeness, suitability or reliability of this data for any purpose. THE USER ACCEPTS THE DATA "AS IS" AND ASSUMES ALL RISKS ASSOCIATED WITH ITS USE. The Minnesota Department of Natural Resources assumes no responsibility for actual, consequential, incidental, special or exemplary damages resulting from caused by or associated with, any user's reliance on or use of this data, even if appraised of the likelihood of such damages occurring. All maps and other material provided herein are protected by copyright.

