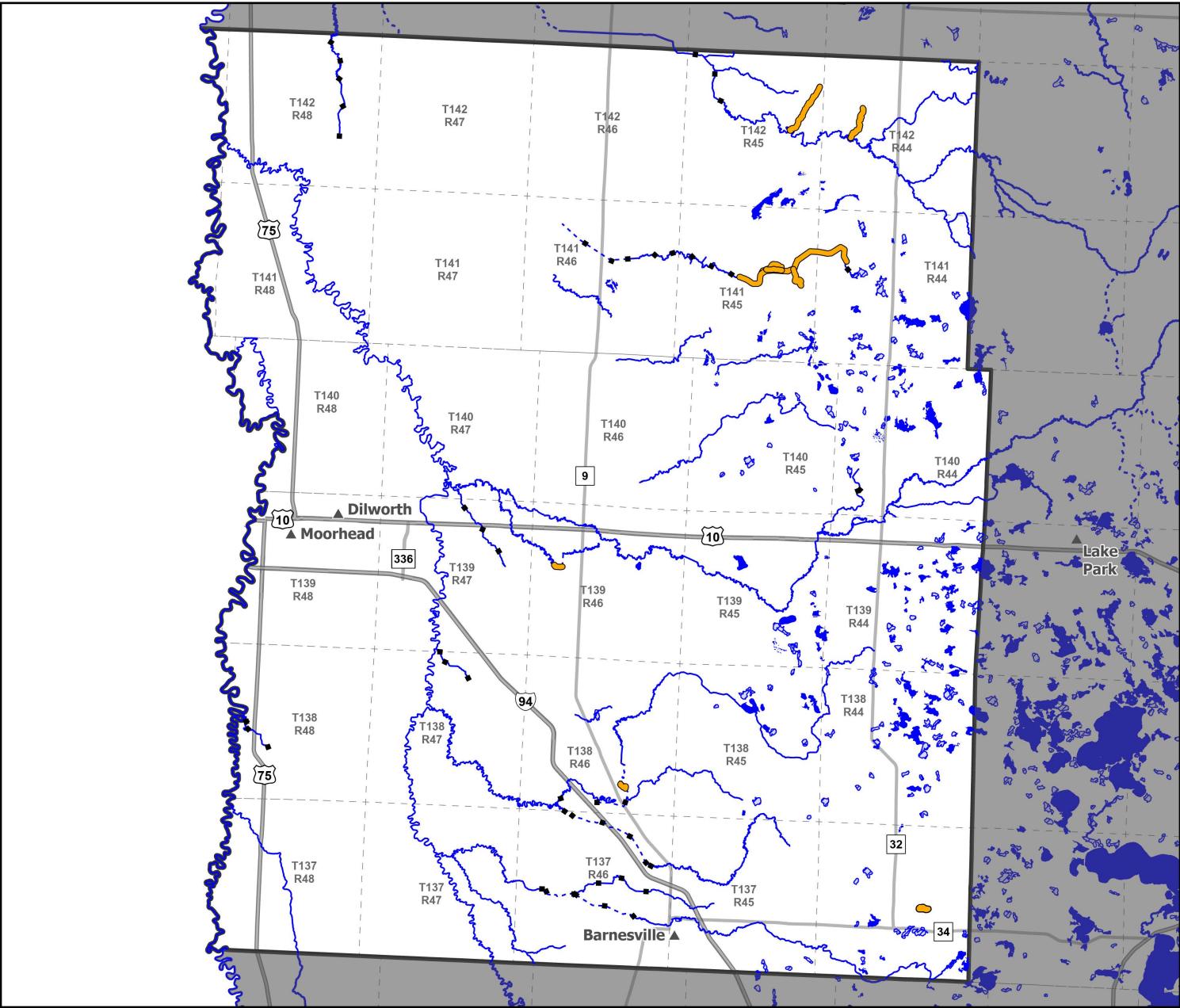


Public Waters Inventory

Preliminary Map of Corrections

Clay County

Public waters are defined in Minnesota Statute 103G. The boundaries of public waters shown on this map are drawn as accurately as possible, consistent with the map scale, but are still approximate. Public ditches are only shown where they overlap with public waters.



Public Waters Natural Watercourse

Public Waters Altered Natural Watercourse

Public Ditch

Preliminary Recommendation

Add (8)

Remove (0)

Public Waters Basin

Public Waters Wetland

Preliminary Recommendation

Add (1)

Remove (0)

Major Cities

Interstate Highways

US Trunk Highways

MN Trunk Highways

PLSS Township

Miles 0 2 4 8

