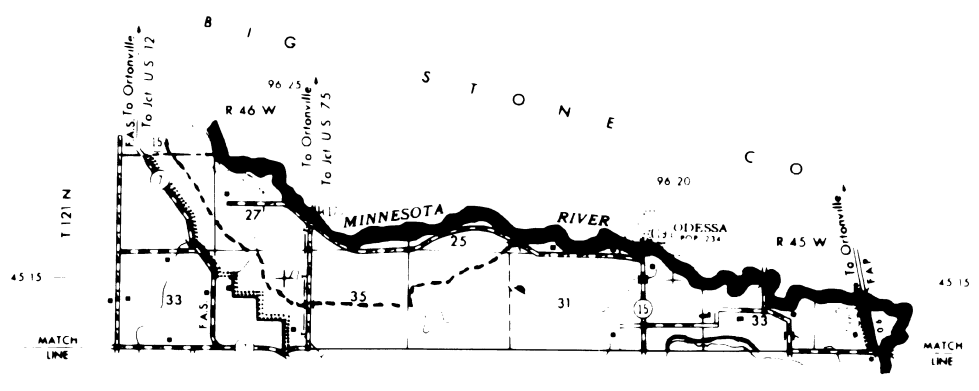
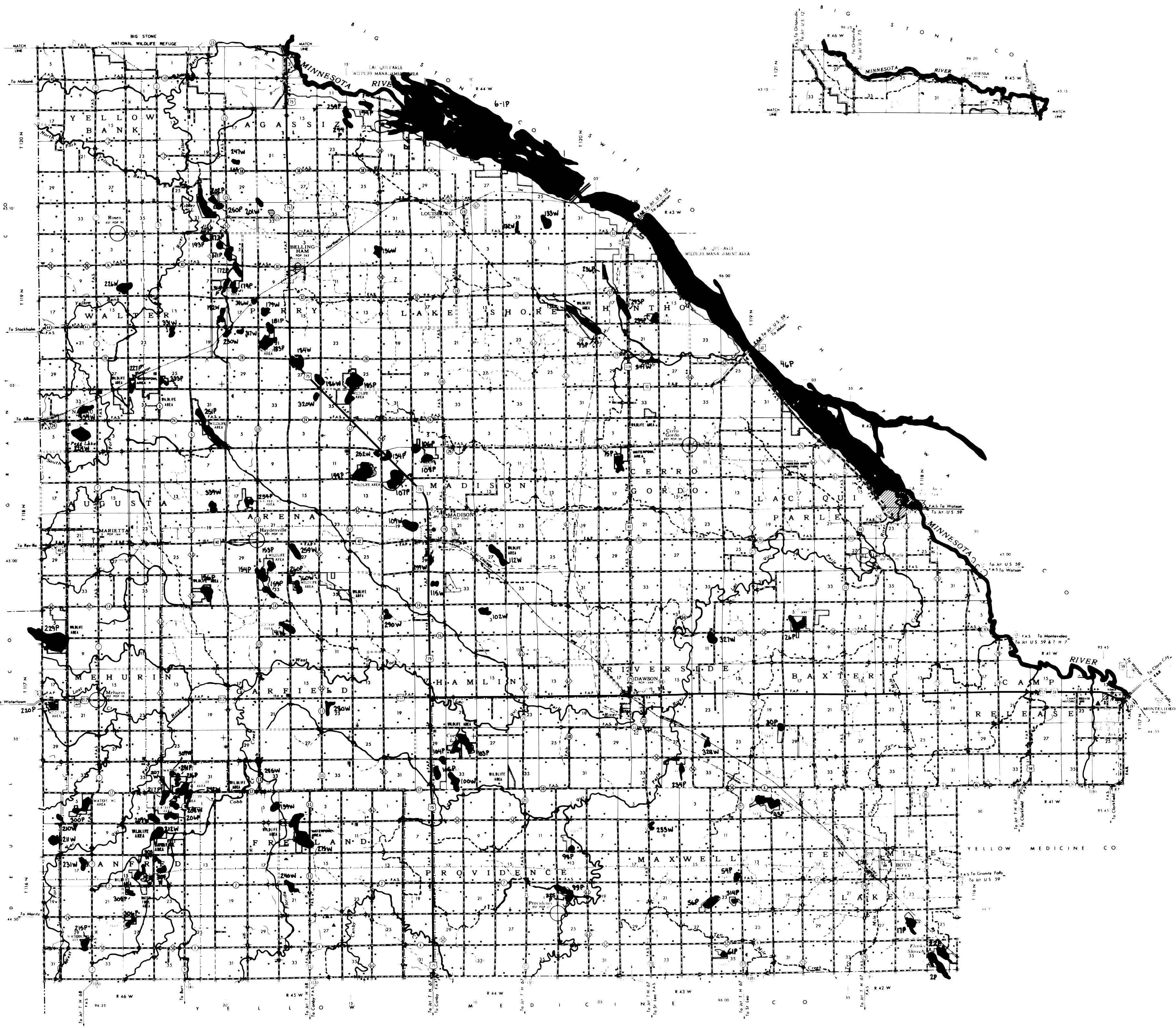


D
A
K
O
T
A

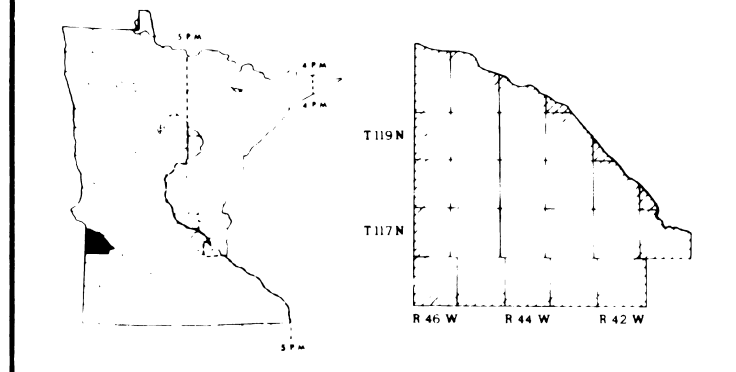
S
O
U
T
H



PROTECTED WATERS AND WETLANDS

LAC QUI PARLE COUNTY MINNESOTA

SHEET 1 of 1



LEGEND

- Protected Waters:**
- Basins are identified with a number and the letter "P".
 - Watercourses are identified with a heavy, dark line.
 - Public ditches are identified with a dashed line.
- Protected Wetlands:**
- Identified with a number and the letter "W".

This map is intended for use with a separate descriptive list. The boundaries of the protected water bodies shown on this map are plotted as accurately as possible, consistent with the map scale, but are still approximate. A protected water body boundary coincides with the ordinary high water mark of the water body as defined in Minnesota Statutes, Section 105.37 and is determined through DNR field inspection or survey.

Protected waters and wetlands are subject to Minnesota Statutes, Section 105.42, which requires that a permit be obtained before making any alteration in the course, current or cross-section of these waters. Contact the DNR office in your area for further information.

Trespass

The designation and mapping of protected waters or wetlands **does not** entitle anyone to cross private land in order to gain access to the water. Please respect the property of others.

Water Bank

Wetland owners may be eligible for compensation for preservation of protected wetlands. Contact the DNR office in your area for further information.

SCALE: 1/2" = 1 MILE