



## How to Download Floodplain GIS Data using MnGEO

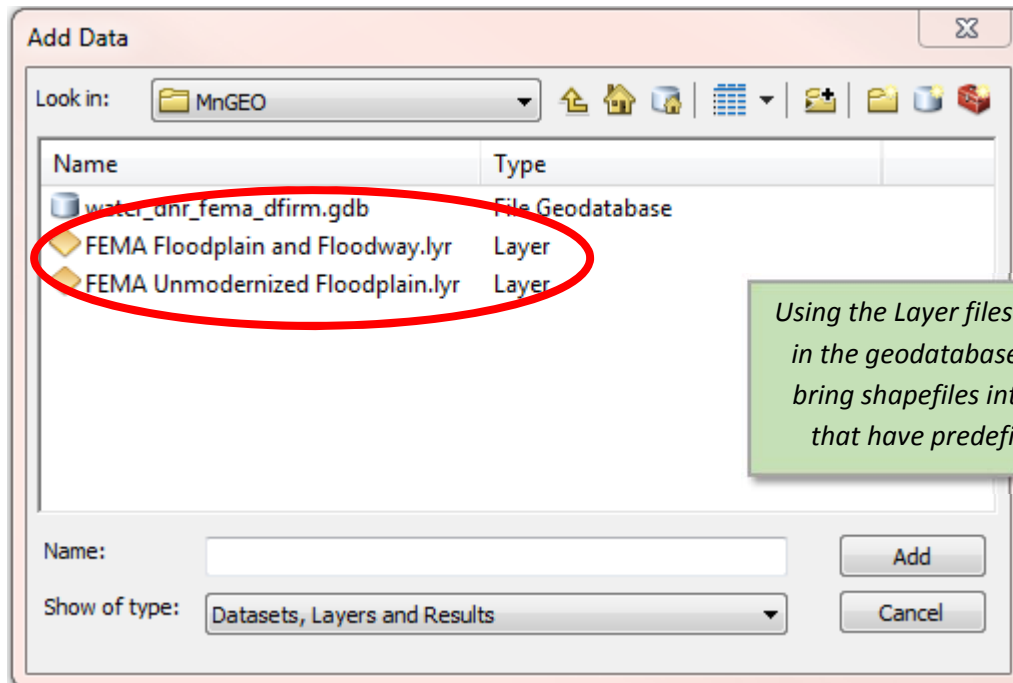
This MnGeo (or Minnesota Geospatial Commons) site contains floodplain data in GIS formats. Data is available for both DFIRM counties and non-DFIRM counties.

Visit <https://gisdata.mn.gov/> and enter "FEMA" or DFIRM" into the search box. Click on *FEMA Digital Flood Rate Insurance Maps (DFIRM), Minnesota*. Scroll halfway down the page and download the "ESRI File Geodatabase".

*A DFIRM is a Digital Flood Insurance Rate Map or a map that FEMA has updated since 2003. DFIRMs are found in "modernized" counties. "Unmodernized" counties use paper maps (but some digital information is available).*

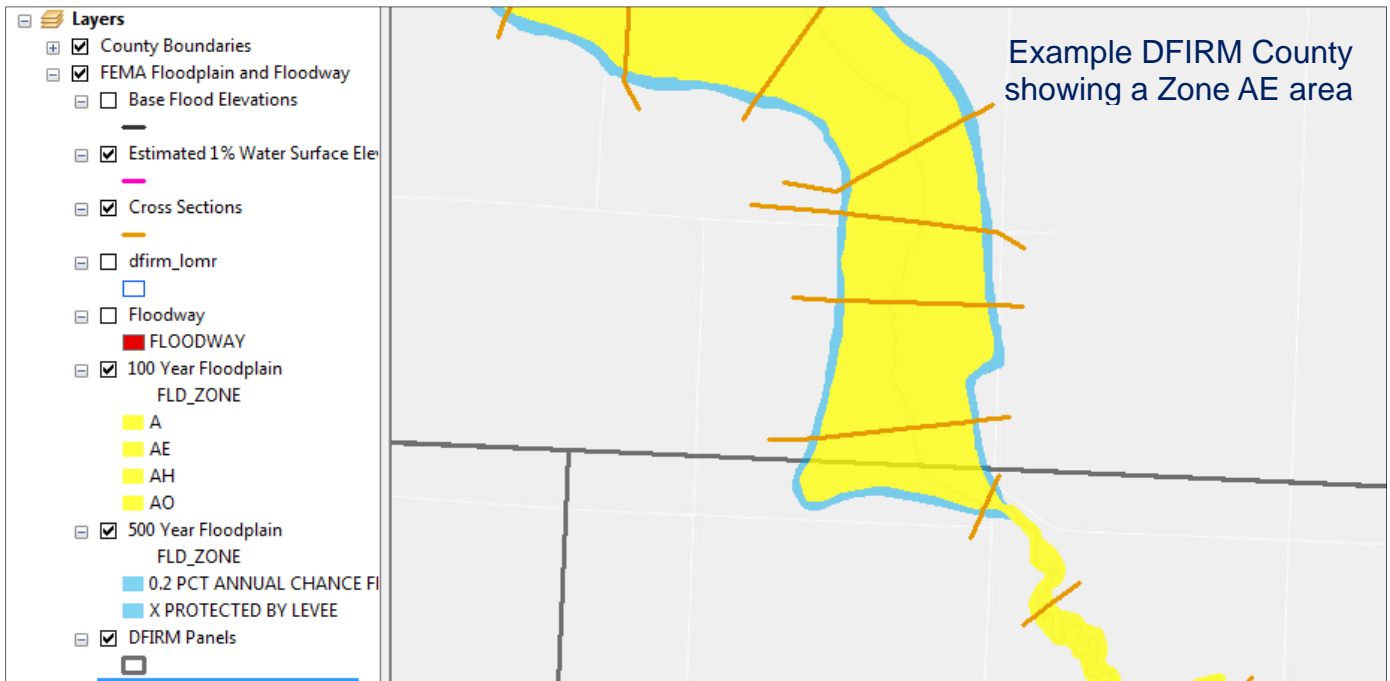


In your ArcMap document (\*.mxd), import the **layer** files from the location where you've downloaded the database.

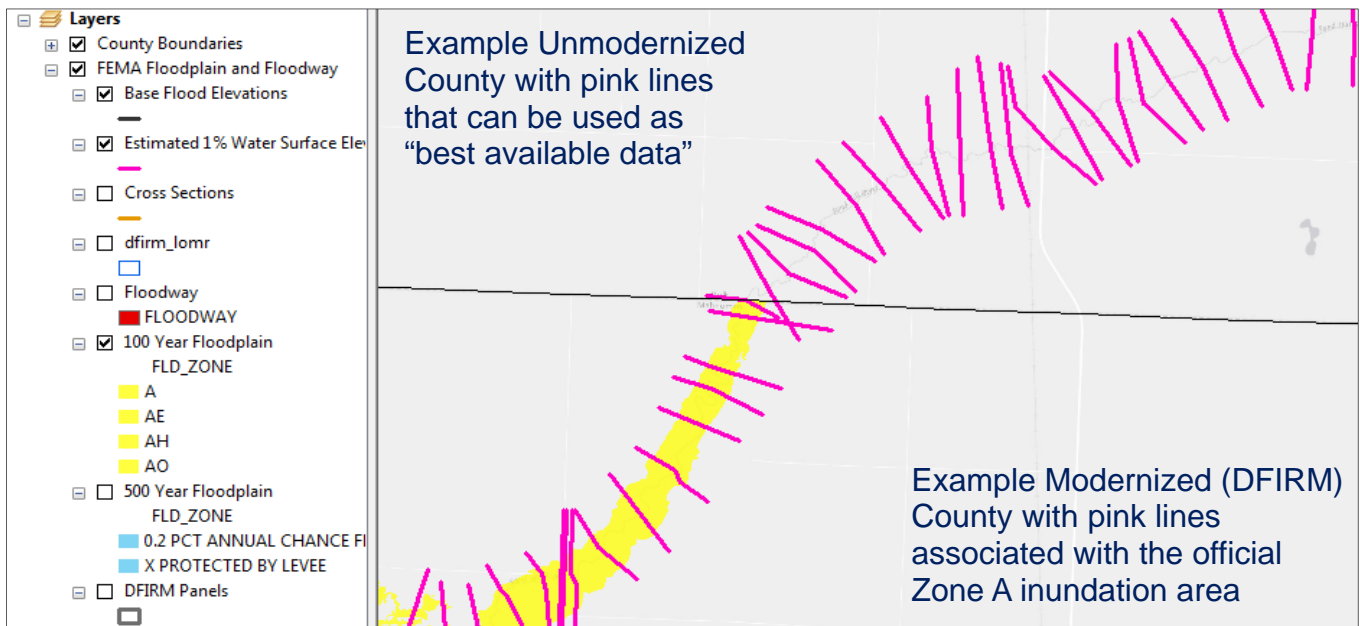


*Using the Layer files instead of the files in the geodatabase will allow you to bring shapefiles into your document that have predefined symbology.*

For DFIRM counties (areas with maps updated since 2003), the FEMA Floodplain and Floodway layer file should be used. This database contains effective BFE's, DFIRM cross sections, Flood Hazard Zones, and DFIRM panels.



The FEMA Floodplain and Floodway layer also includes model-supported elevation data for Zone A floodplains. These cross-sections are often called the “pink lines” due to the default color of the lines. These Estimated 1% Water Surface Elevations can be used as “best available data” if an elevation is needed for zoning purposes or map appeals.



For non-DFIRM counties, the FEMA Unmodernized Floodplain layer should be used. Note that these counties may also have some “pink lines”. The unmodernized floodplain boundary is not the official FEMA layer, but may be used for planning purposes.