

DULUTH WETLAND INVENTORY & EVALUATION

PROJECT ID:
306-19-00

YEAR:
1999

GRANTEE:
City of Duluth

COUNTY:
St. Louis

CATEGORY:
GIS/Information Management

GRANT AWARD:
\$31,500
TOTAL PROJECT COST:
\$45,000

The mission of Minnesota's Lake Superior Coastal Program is to preserve, protect, restore and enhance coastal resources for present and future generations. We provide technical and financial assistance for local communities to balance protection of coastal resources with providing residents and visitors places to work, live, and play.

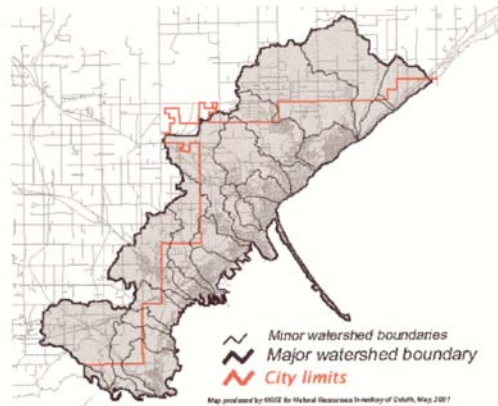


FOR MORE INFORMATION:
Lake Superior Coastal Program
1568 Highway 2
Two Harbors, MN 55616
Phone: 218.834.6612
www.dnr.state.mn.us/waters/lakesuperior

SUMMARY

The City of Duluth identified a need for detailed wetland data to assist in development planning that protects wetlands, and subsequently the City's many urban streams.

This image shows the major watershed boundary as well as the minor watersheds through the City of Duluth



The City purchased 1997 color infrared aerial photos, 1995 unrectified digital aerial photos, and other necessary data layers. They contracted with the Natural Resources Research Institute (NRRI) to digitally

scan and rectify the imagery, and employ US Fish and Wildlife Services conventions to identify and locate wetlands within the watersheds of all streams flowing through the City of Duluth. The data was made available both via a web page and on CD.

The wetland data is used for preliminary site analyses on proposed developments, and it proved critically important during the City of Duluth's Comprehensive Planning efforts.

