



# R.J. HOULE VISITOR CENTER FEASIBILITY STUDY

**PROJECT ID:**

306-09-00

**YEAR:**

1999

**GRANTEE:**

Lake County

**COUNTY:**

Lake

**CATEGORY:**

Land Use, Planning & Development

**GRANT AWARD:**

\$2,500

**TOTAL PROJECT COST:**

\$3,543

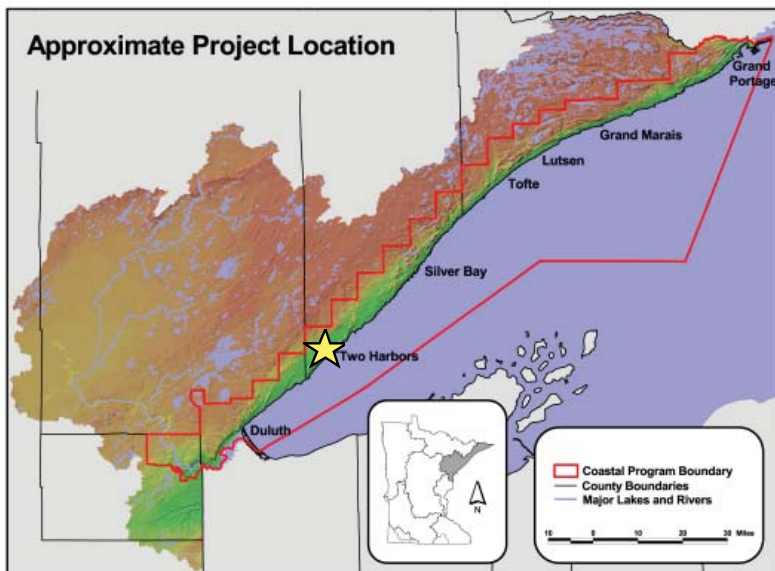
A feasibility study was created to determine expansion and other opportunities for the Lake County R.J. Houle Visitor Center. The intent of the study was to help maintain a full service Visitor Information Center as a nonprofit entity to serve as a proactive tool to attract tourism development.



The study focused on economic development and waterfront revitalization opportunities.

In May of 2001, the feasibility study was distributed to Lake County Commissioners, and presented to the public for comments. The study included recommendations for Visitor Center operation and management, potential sources of funding, and tourism market identification. It includes trends for various groups of visitors (such as hunters, wildlife watchers, and kayakers) that local businesses could market themselves to, via expanded R.J. Houle Visitor

## PROJECT LOCATION



## FOR MORE INFORMATION

Minnesota's Lake Superior Coastal Program  
1568 Highway 2  
Two Harbors, MN 55616  
(218) 834-6612  
[www.dnr.state.mn.us/waters/lakesuperior](http://www.dnr.state.mn.us/waters/lakesuperior)