



SHOVEL POINT CLIMBERS PLATFORM

Shovel Point, located in Tettegouche State Park, is one of Minnesota's most popular climbing destinations. It is also a popular day hike for State Park visitors along the North Shore of Lake Superior. The popular site was experiencing problems with erosion, and several trees were stressed from climbers using them as anchors.



To solve erosion problems and provide better access to the public, a climbing platform was designed and constructed in the highest priority climbing location. The new platform is used

by climbing groups, and improves both the safety and accessibility of the site.



DNR designed anchors, and one standard anchor for comparison

A DNR Geological Engineer evaluated and test drilled the site for permanent anchor locations. The anchors installed were designed to be many times stronger than standard anchors (see photo).



PROJECT ID:

306A-03-06

YEAR:

2004

GRANTEE:

Minnesota DNR Parks

COUNTY:

Lake

CATEGORY:

Public Access

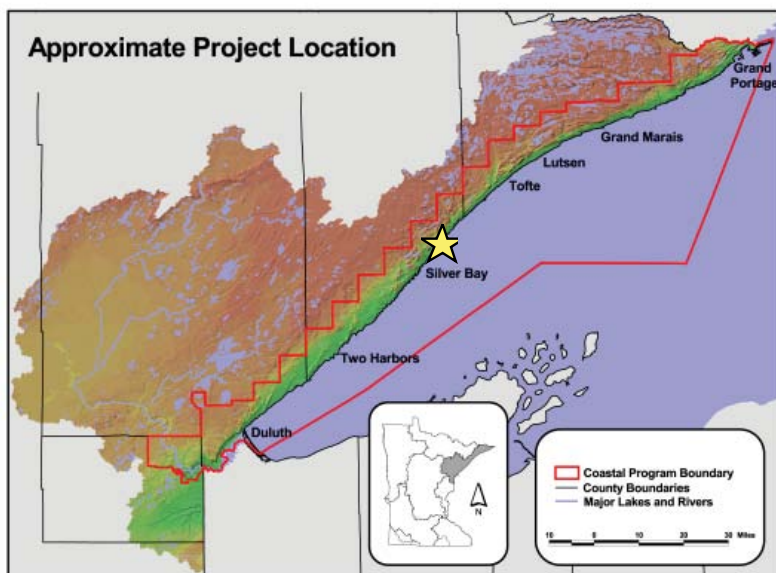
GRANT AWARD:

\$6,030

TOTAL PROJECT COST:

\$12,444

PROJECT LOCATION



FOR MORE INFORMATION

Minnesota's Lake Superior

Coastal Program

1568 Highway 2

Two Harbors, MN 55616

(218) 834-6612

www.dnr.state.mn.us/waters/lakesuperior

THE MISSION OF MINNESOTA'S LAKE SUPERIOR COASTAL PROGRAM IS TO PRESERVE, PROTECT, RESTORE AND ENHANCE COASTAL RESOURCES FOR PRESENT AND FUTURE GENERATIONS. WE PROVIDE TECHNICAL AND FINANCIAL ASSISTANCE FOR LOCAL COMMUNITIES TO BALANCE PROTECTION OF COASTAL RESOURCES WITH PROVIDING RESIDENTS AND VISITORS PLACES TO WORK, LIVE AND PLAY.

ABOUT US