



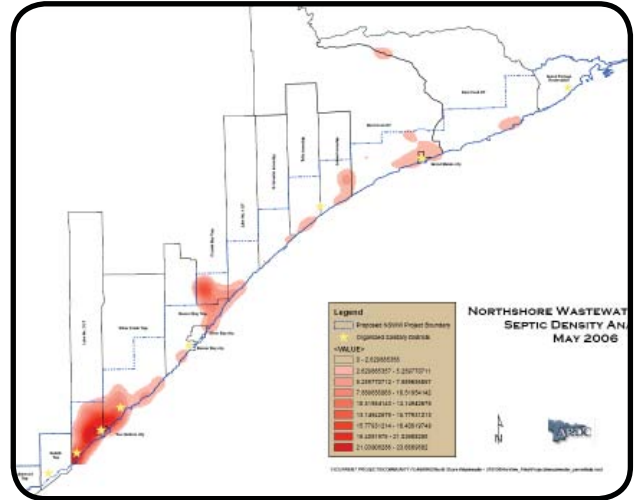
NORTH SHORE WASTEWATER MANAGEMENT STUDY

Residential and commercial development pressures have increased dramatically in the last decade and are expected to continue. The 2004 North Shore Management Plan update identified proper wastewater management as critical for protecting the character and health of the Lake Superior and its communities.

Wastewater systems are important in maintaining public health and protecting water supplies. Failing systems must be corrected in order to prevent groundwater and surface water pollution.

This project outlined the state of wastewater management on the North Shore, and the potential for increased cooperation among local government units, sanitary districts, and residents in the future.

The study report included background conditions on the North shore area, descriptions of wastewater systems and management options, and policy recommendations for future efforts in exploring cooperative wastewater management. Recommendations concluded that the North Shore Management Board, a joint powers board of governmental units with land use authorities on the North Shore, take a lead role in wastewater management, by promoting efforts to establish shore-wide management standards and evaluating the potential for a sanitary district to manage decentralized septic systems.



Northshore Wastewater Project Septic Density Analysis May 2006, analysis by ARDC

PROJECT ID:

306-23-06

YEAR:

2004

GRANTEE:

Arrowhead Regional Development Commission

COUNTY:

Multiple

CATEGORY:

Land Use, Planning, and Development

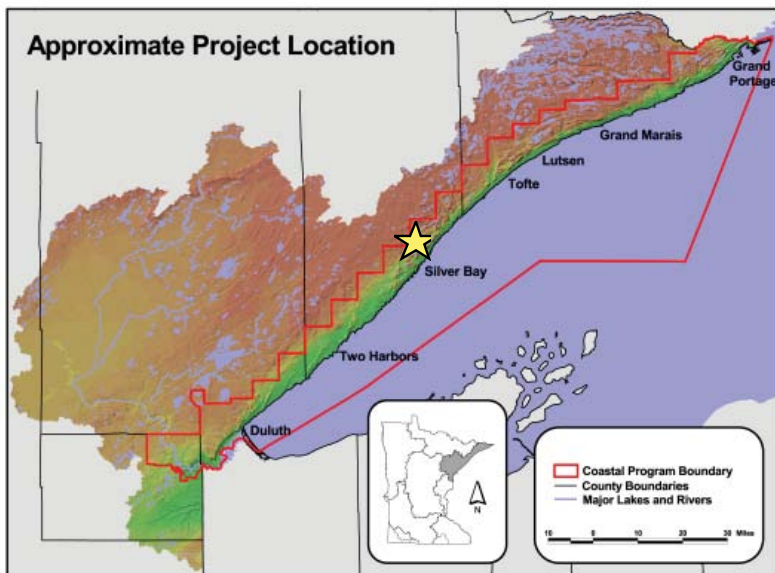
GRANT AWARD:

\$13,396

TOTAL PROJECT COST:

\$17,884

PROJECT LOCATION



FOR MORE INFORMATION

Minnesota's Lake Superior Coastal Program
 1568 Highway 2
 Two Harbors, MN 55616
 (218) 834-6612
www.dnr.state.mn.us/waters/lakesuperior