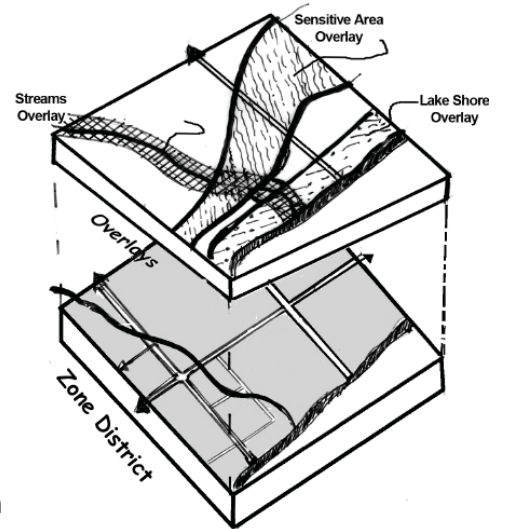




# RURAL LAND USE PLANNING TOOLS AND MODEL ORDINANCES

In response to growth in rural areas along Lake Superior's north shore, the Center for Rural Planning created "A Community Planning Handbook: Land Use Planning, Tools, and Ordinances". This citizens' guide explains what a Community Plan is, how to create a Plan, and how to utilize zoning and subdivision ordinances to achieve a community's vision.

The Community Handbook provides examples of planning processes, exercises to help groups create community plans, and ground rules for groups. It features tools, such as an Overlay District, and describes how a Community Plan can be put into action through the development ordinances. The Handbook explains what ordinances are and describes various tools and options for creating a zoning or subdivision ordinance. Along with the citizen overview, examples of model ordinances from other communities are also included.



Overlay Districts: A powerful planning tool for protecting natural resources in rural communities

**PROJECT ID:**

306-20-06

**YEAR:**

2004

**GRANTEE:**

Center for Rural Planning

**COUNTY:**

St Louis

**CATEGORY:**

Land Use, Planning & Development

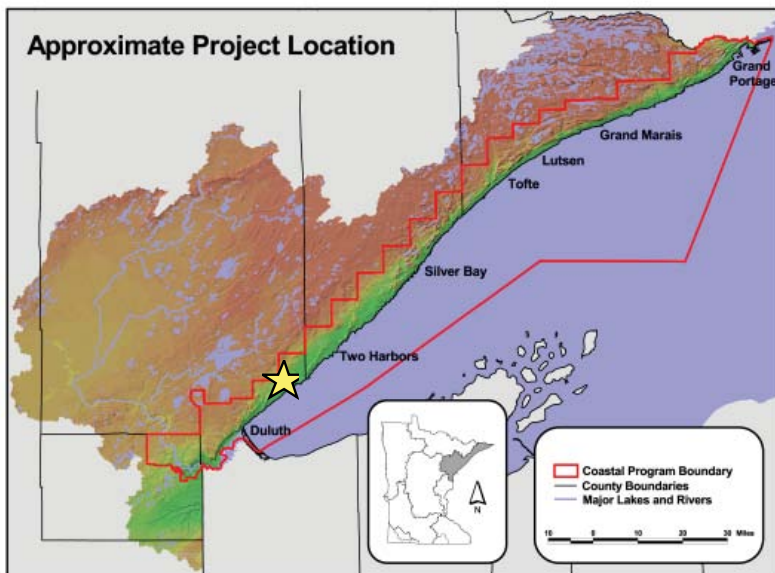
**GRANT AWARD:**

\$15,000

**TOTAL PROJECT COST:**

\$20,041

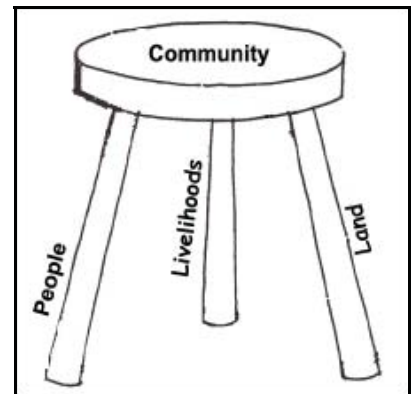
**PROJECT LOCATION**



*"...the land is the lifeblood of its people, regardless of whether one lives in an urban or rural area. This Handbook is written in the hope that it will give the citizens who are the caretakers of the land, tools to protect, use, and sustain the land in ways*

*that are beneficial for all Earth's inhabitants."*

*A Community Planning Handbook: Land Use Planning, Tools, and Ordinances, 2004*



**FOR MORE INFORMATION**

Minnesota's Lake Superior Coastal Program  
 1568 Highway 2  
 Two Harbors, MN 55616  
 (218) 834-6612  
[www.dnr.state.mn.us/waters/lakesuperior](http://www.dnr.state.mn.us/waters/lakesuperior)