



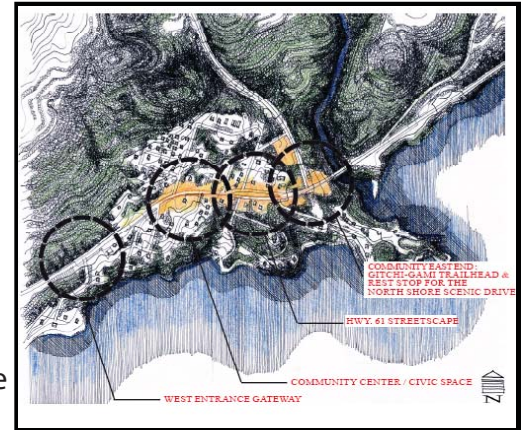
# BEAVER BAY CONCEPTUAL DESIGN

Beaver Bay is the oldest community on the North Shore. The community desired a plan to focus on creating an enhanced identity for the City, while solving some circulation and access issues.

At the onset of the project, a community focus group was established. Much of the focus was centered on the concept of a trail head site and roadside stop to create multi-use open green space to serve the Gitche Gami Trail, North Shore Scenic Byway, and the Beaver Bay Community.

The following were the four priority design opportunities in Beaver Bay identified by the focus group and local community:

1. A gateway at the west entrance into the community
2. A civic space as a setting for the Beaver Bay Community Center
3. Highway 61 street scapes to reinforce the community identity
4. Creating a Gitche Gami Trailhead and rest stop for the North Shore Scenic Drive as a focal point of the City's east end



*A map identifying the location of the four key design opportunity areas*

## PROJECT ID:

306-19-06

## YEAR:

2004

## GRANTEE:

Arrowhead Regional Development Commission

## COUNTY:

Lake

## CATEGORY:

Land Use, Planning & Development

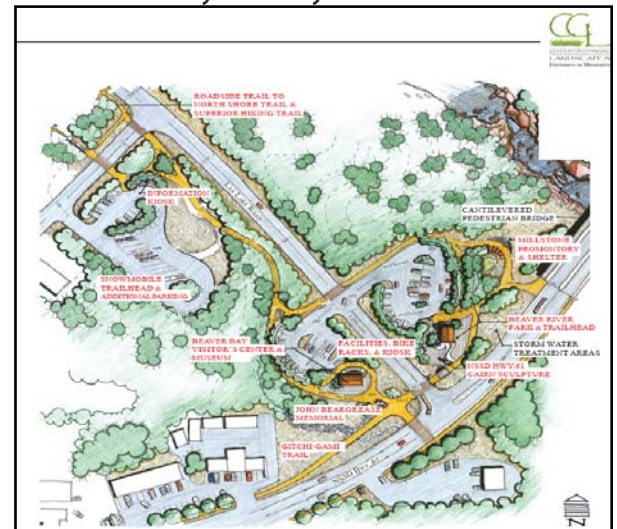
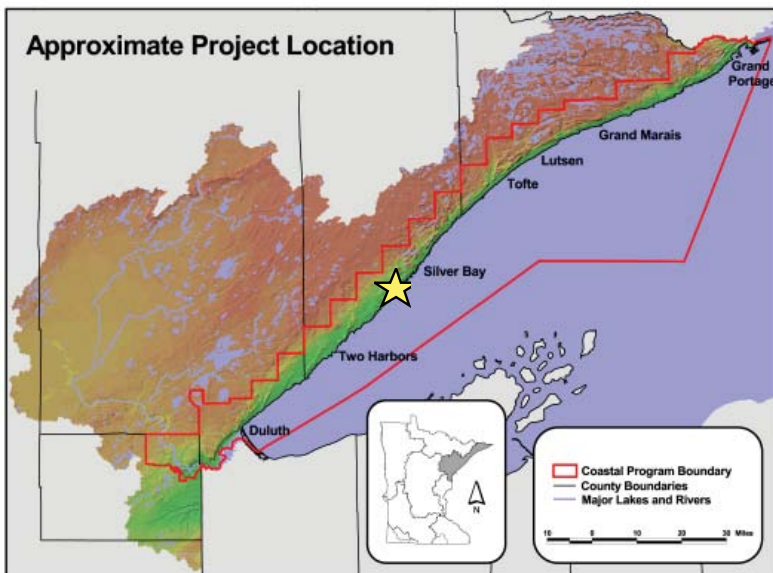
## GRANT AWARD:

\$15,000

## TOTAL PROJECT COST:

\$20,056

## PROJECT LOCATION



*Overview of the east end trail head/rest stop design*

## FOR MORE INFORMATION

Minnesota's Lake Superior Coastal Program  
1568 Highway 2  
Two Harbors, MN 55616  
(218) 834-6612  
[www.dnr.state.mn.us/waters/lakesuperior](http://www.dnr.state.mn.us/waters/lakesuperior)