



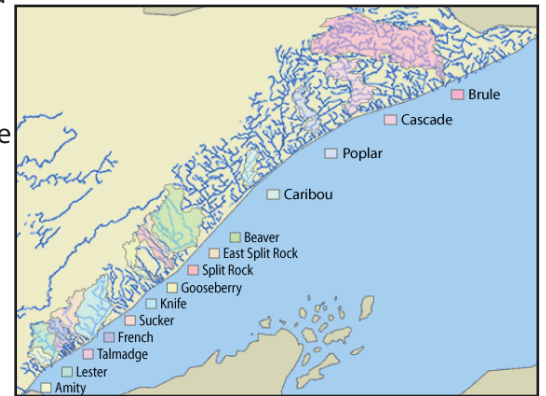
DULUTHSTREAMS.ORG HEADS NORTH

The DuluthStreams.org web site established itself as the premier information center for stream and water quality information. Its popularity garners thousands of web hits per month. This grant allowed for continued collection of valuable monitoring data, and extended its reach north along the Lake Superior shore.

Poplar River stream data was collected and added to the site's large stream data archive. Stream data measured included total suspended sediment, turbidity, nutrients, and chloride. The Data-Visualization Tool, which allows users to watch "movies" of stream data plots, was expanded for both existing and new North Shore streams (see photo below).

Each individual stream page includes GIS maps, available water quality data, photographs, land use data, and an estimate of percent impervious surface for the stream watershed. "Watersheds and Communities" sections were created for major North Shore streams, including local official contact information.

The site continues to be an important resource for residents, educators, and area professionals.



PROJECT ID:
306-03-07

YEAR:
2005

GRANTEE:
University of Minnesota

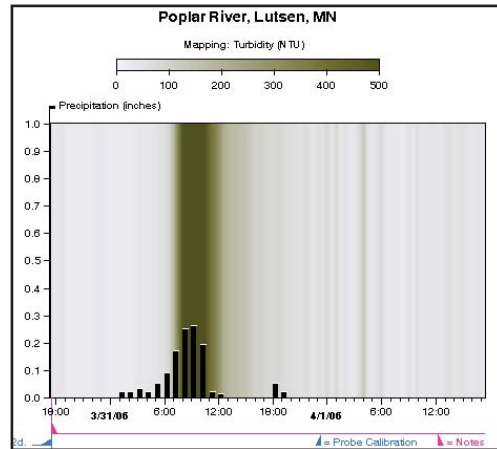
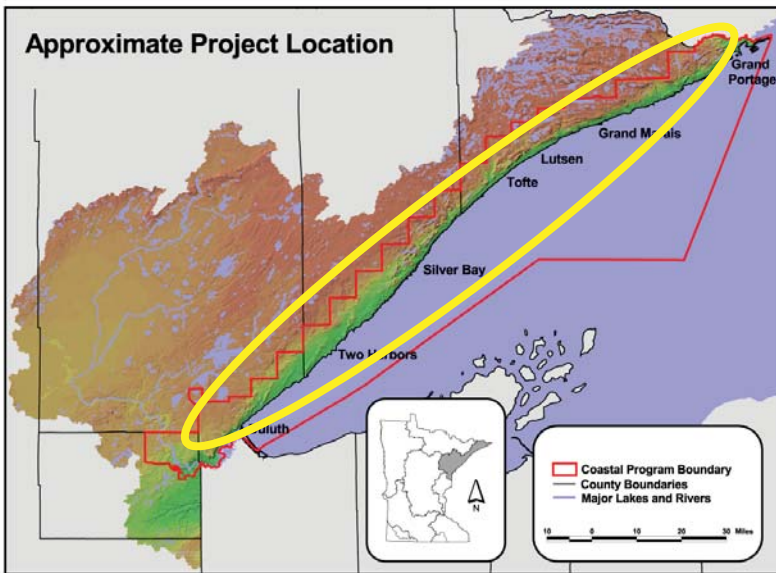
COUNTY:
Various

CATEGORY:
Outreach and Education

GRANT AWARD:
\$95,619

TOTAL PROJECT COST:
\$192,295

PROJECT LOCATION



This data plot shows turbidity increasing after a rain event on the Poplar River.

FOR MORE INFORMATION

Minnesota's Lake Superior Coastal Program
1568 Highway 2
Two Harbors, MN 55616
(218) 834-6612
www.dnr.state.mn.us/waters/lakesuperior

