

North and East Metro GWMA: Implementation Plan Update

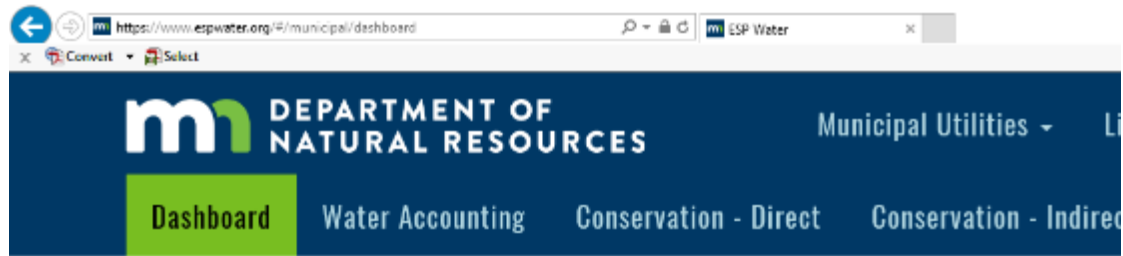
Dan Miller | Project Manager
Ecological & Water Resources Division

Plan Objective 1



- Geologic Atlas Update
- New Observation Wells
- Educational Resources

Plan Objective 2



The screenshot shows a web browser window with the URL <https://www.espwater.org/#/municipal/dashboard>. The page header features the logo for the Department of Natural Resources and navigation links for 'Municipal Utilities', 'Dashboard', 'Water Accounting', 'Conservation - Direct', and 'Conservation - Indirect'.

Dashboard - Water Summary

Do NOT enter data on this page. These numbers will auto populate once the water accounting section is complete.

Reporting Year: [Download Report](#)

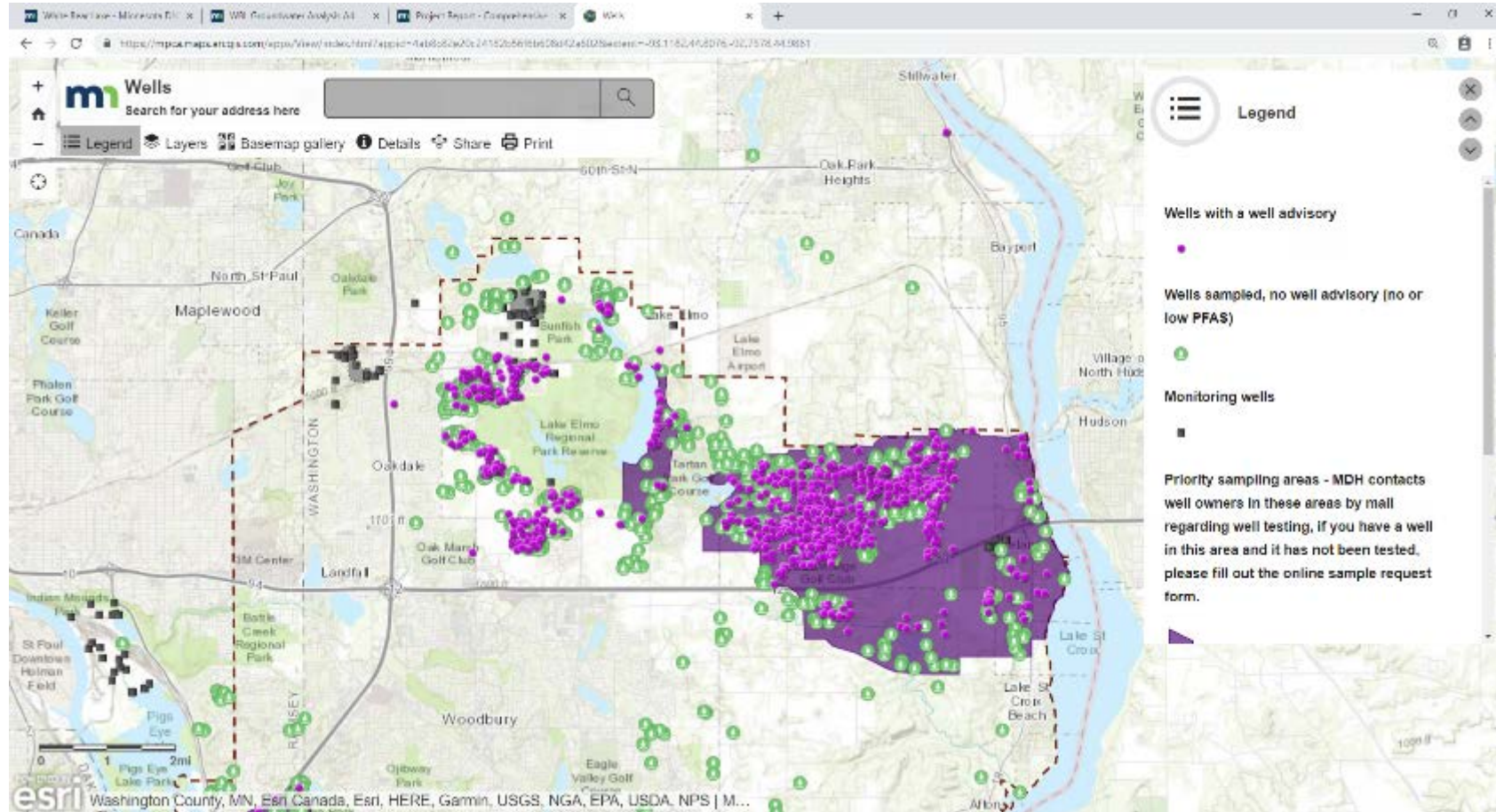
	Metric
❗	Unaccounted Water Loss [UWL]
❗	Residential Gallons per Capita Demand (GPCD) Daily.
❗	Annual % Reduction in Nonresidential Use.
❗	Reduction in total per capita demand.
❗	Total Peaking Factor.

Comments

[Save](#) [Revert](#)

Plan Objective 3

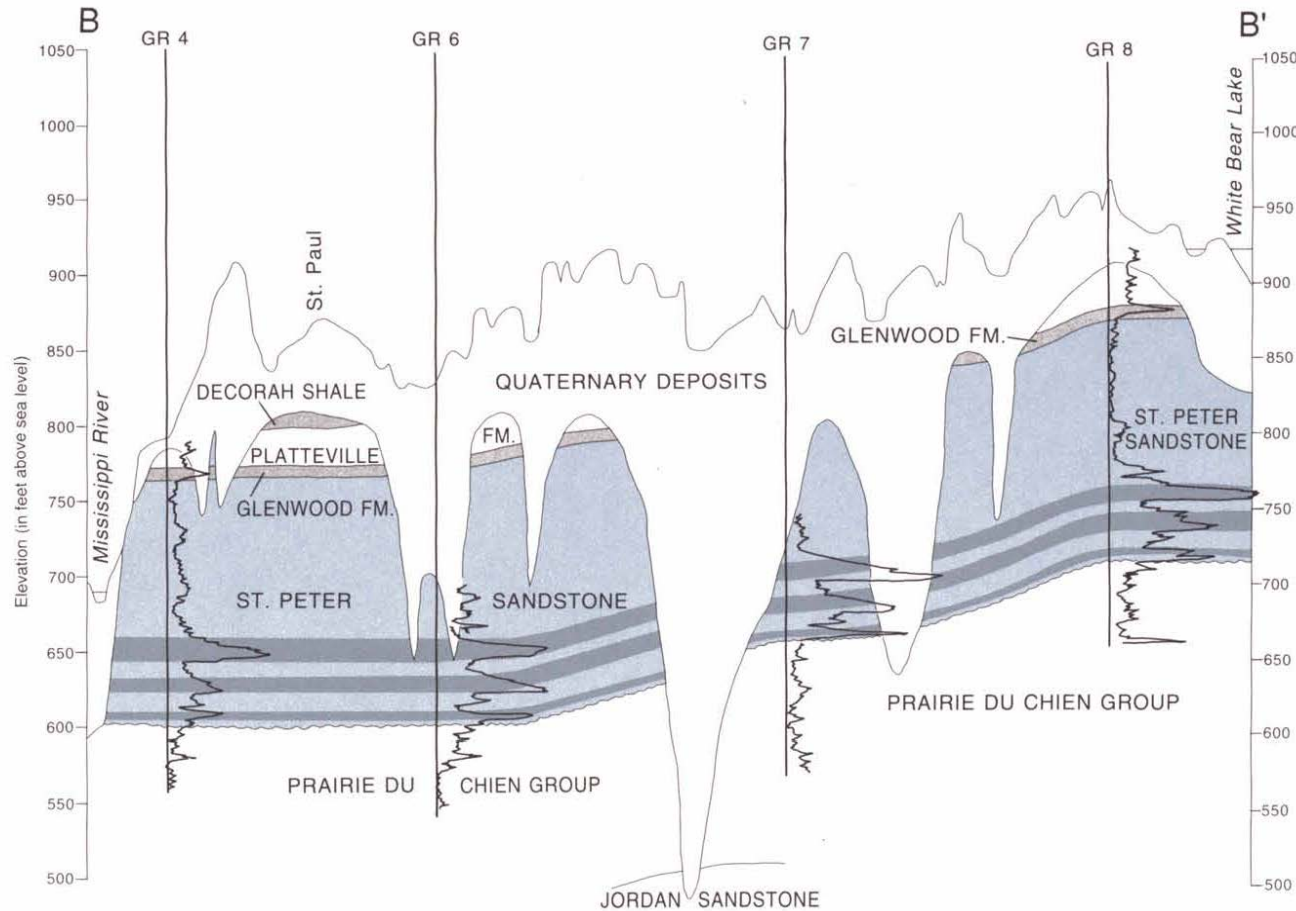
• 3M
settlement



Plan Objective 4

Downtown St. Paul

White Bear Lake



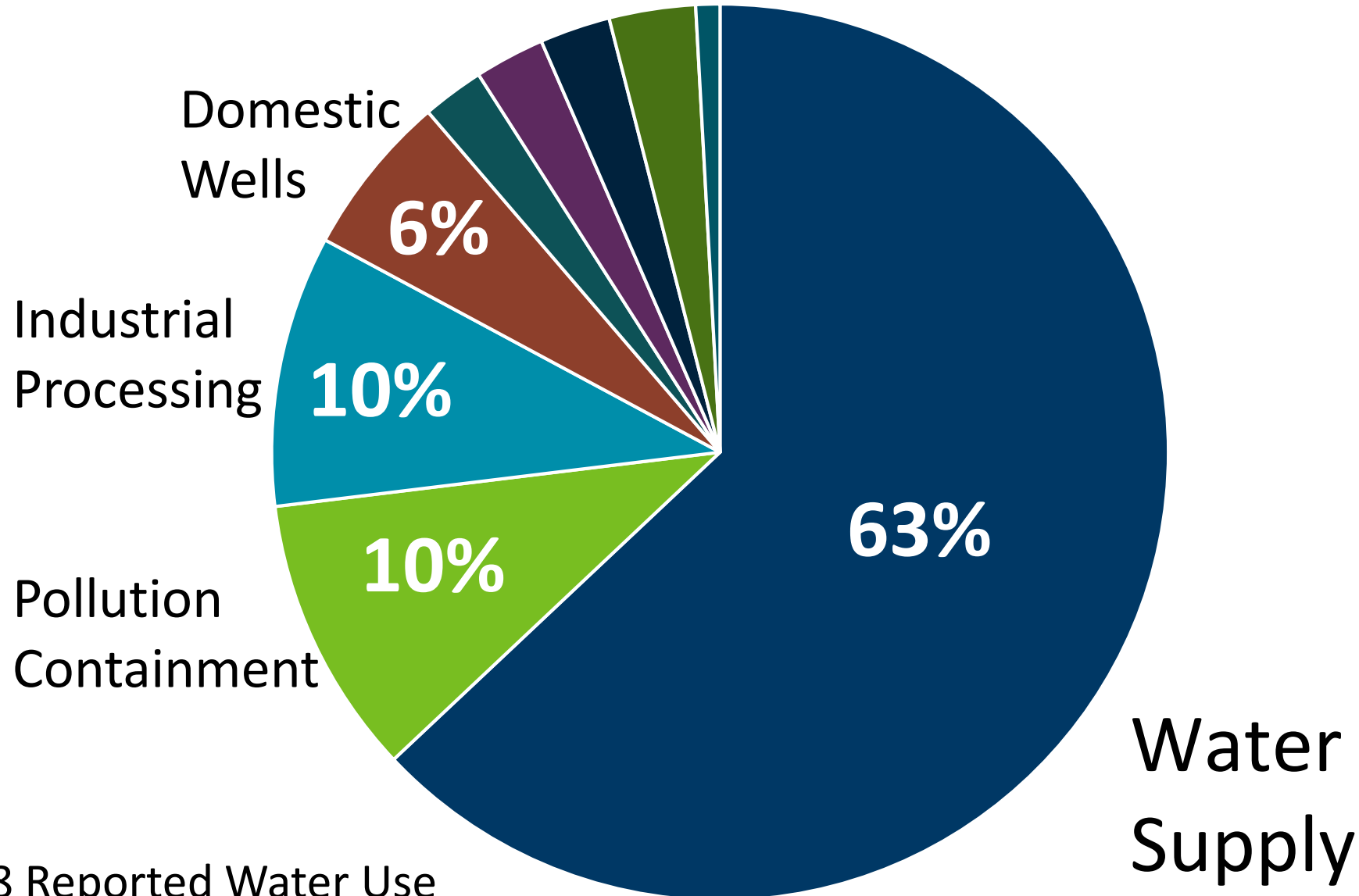
- Ramsey County
- No interferences

Plan Objective 5

- Unauthorized Water Use
- Annual Conferences

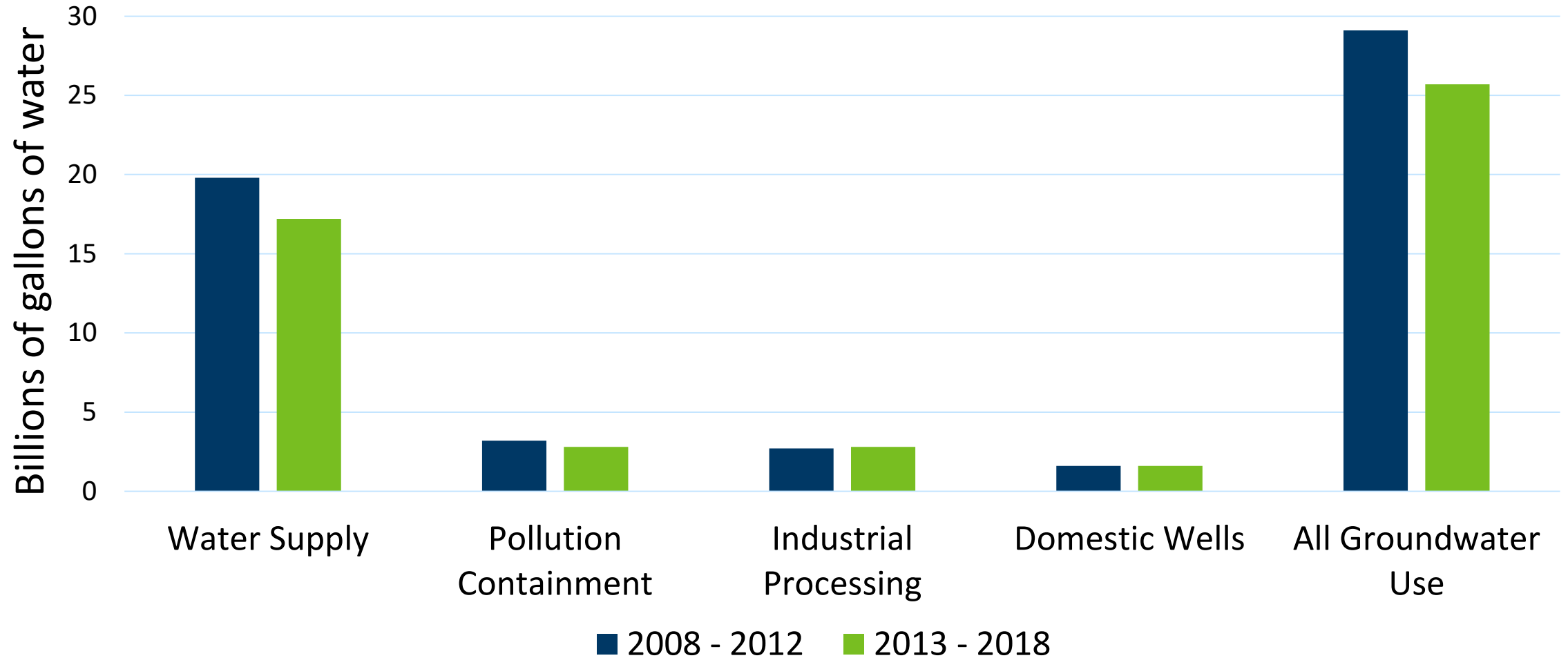


Percent of Groundwater Use Type



2013 – 2018 Reported Water Use

Average Annual Groundwater Use by Type



Other Updates

- WBL Court Case
- Year 5 of Plan



Thank You!

dan.w.miller@
state.mn.us

651-259-5731

