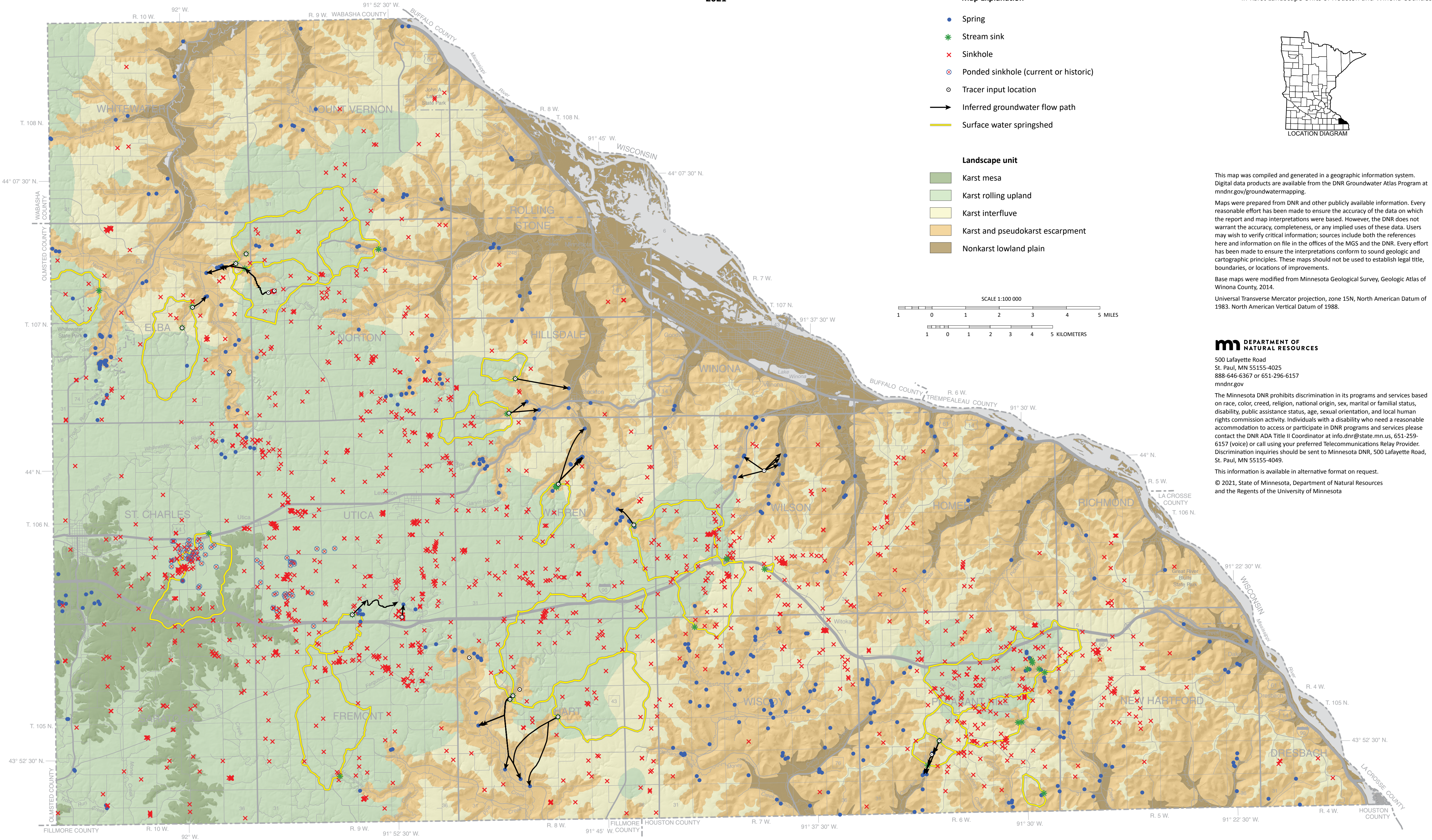


Karst Landscape Units of Winona County
By Jeffrey A. Green and John D. Barry
2021

To accompany the Report and Plate 1
in Karst Landscape Units of Houston and Winona Counties

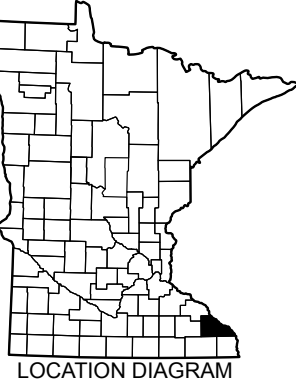


Map Explanation

- Spring
- Stream sink
- Sinkhole
- Ponded sinkhole (current or historic)
- Tracer input location
- Inferred groundwater flow path
- Surface water springshed

Landscape unit

- Karst mesa
- Karst rolling upland
- Karst interfluvium
- Karst and pseudokarst escarpment
- Nonkarst lowland plain



This map was compiled and generated in a geographic information system. Digital data products are available from the DNR Groundwater Atlas Program at mndnr.gov/groundwatermapping.

Maps were prepared from DNR and other publicly available information. Every reasonable effort has been made to ensure the accuracy of the data on which the report and map interpretations were based. However, the DNR does not warrant the accuracy, completeness, or any implied uses of these data. Users may wish to verify critical information; sources include both the references here and information on file in the offices of the MGS and the DNR. Every effort has been made to ensure the interpretations conform to sound geologic and cartographic principles. These maps should not be used to establish legal title, boundaries, or locations of improvements.

Base maps were modified from Minnesota Geological Survey, Geologic Atlas of Winona County, 2014.

Universal Transverse Mercator projection, zone 15N, North American Datum of 1983. North American Vertical Datum of 1988.

DEPARTMENT OF NATURAL RESOURCES

500 Lafayette Road
St. Paul, MN 55155-4025
888-646-6367 or 651-296-6157
mndnr.gov

The Minnesota DNR prohibits discrimination in its programs and services based on race, color, creed, religion, national origin, sex, marital or familial status, disability, public assistance status, age, sexual orientation, and local human rights commission activity. Individuals with a disability who need a reasonable accommodation to access or participate in DNR programs and services please contact the DNR ADA Title II Coordinator at info.dnr@state.mn.us, 651-259-6157 (voice) or call using your preferred Telecommunications Relay Provider. Discrimination inquiries should be sent to Minnesota DNR, 500 Lafayette Road, St. Paul, MN 55155-4049.

This information is available in alternative format on request.

© 2021, State of Minnesota, Department of Natural Resources and the Regents of the University of Minnesota