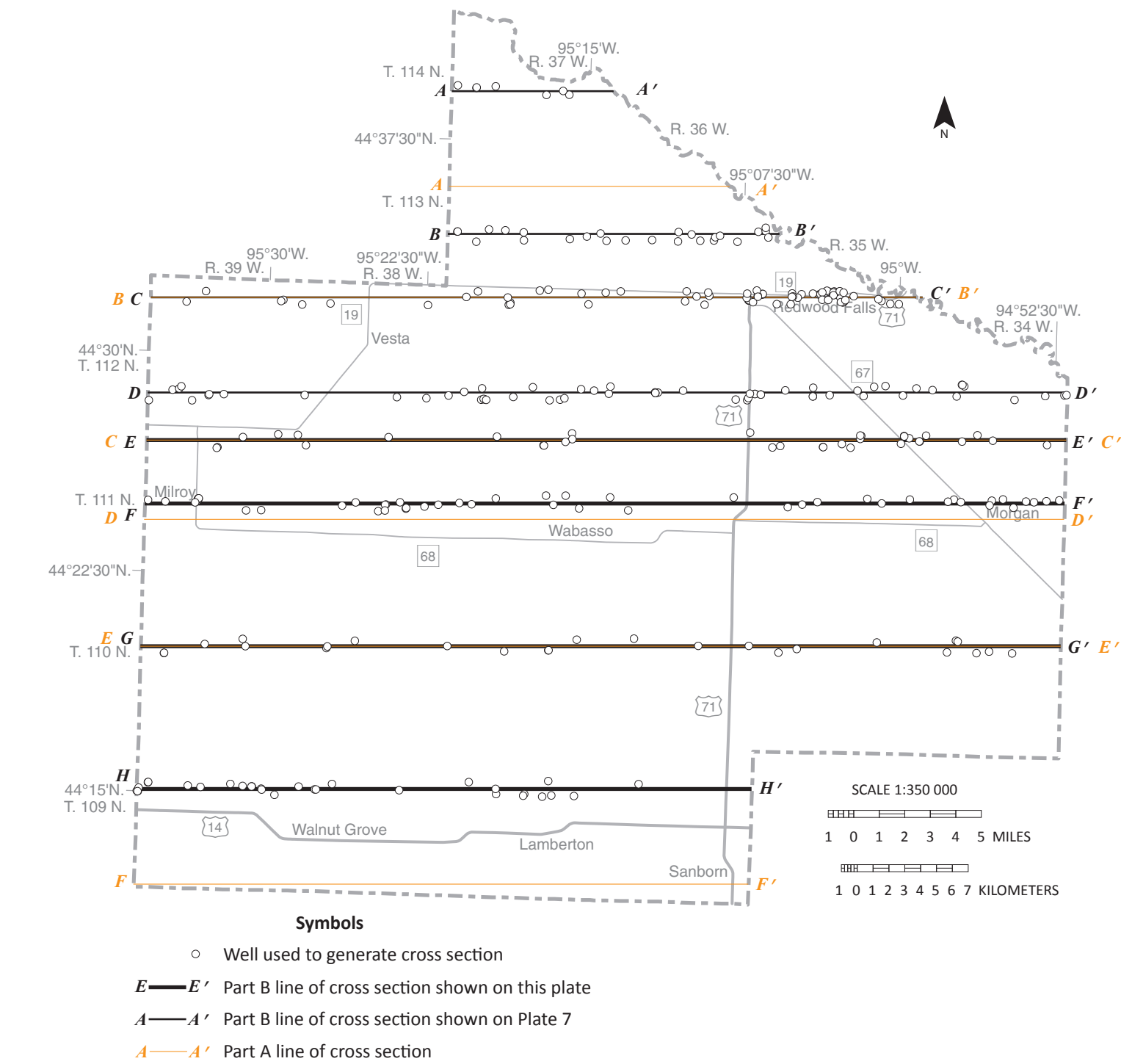
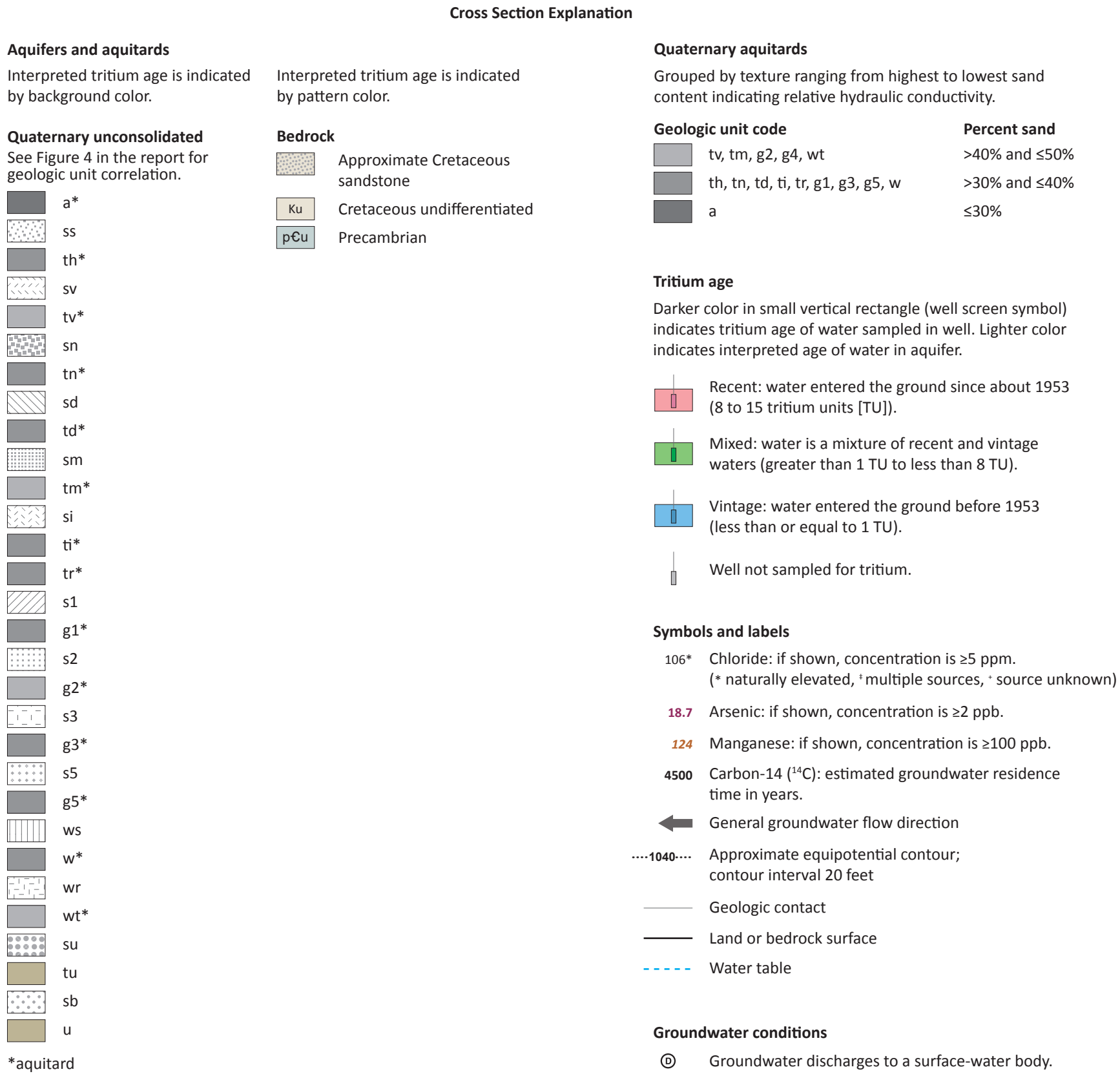
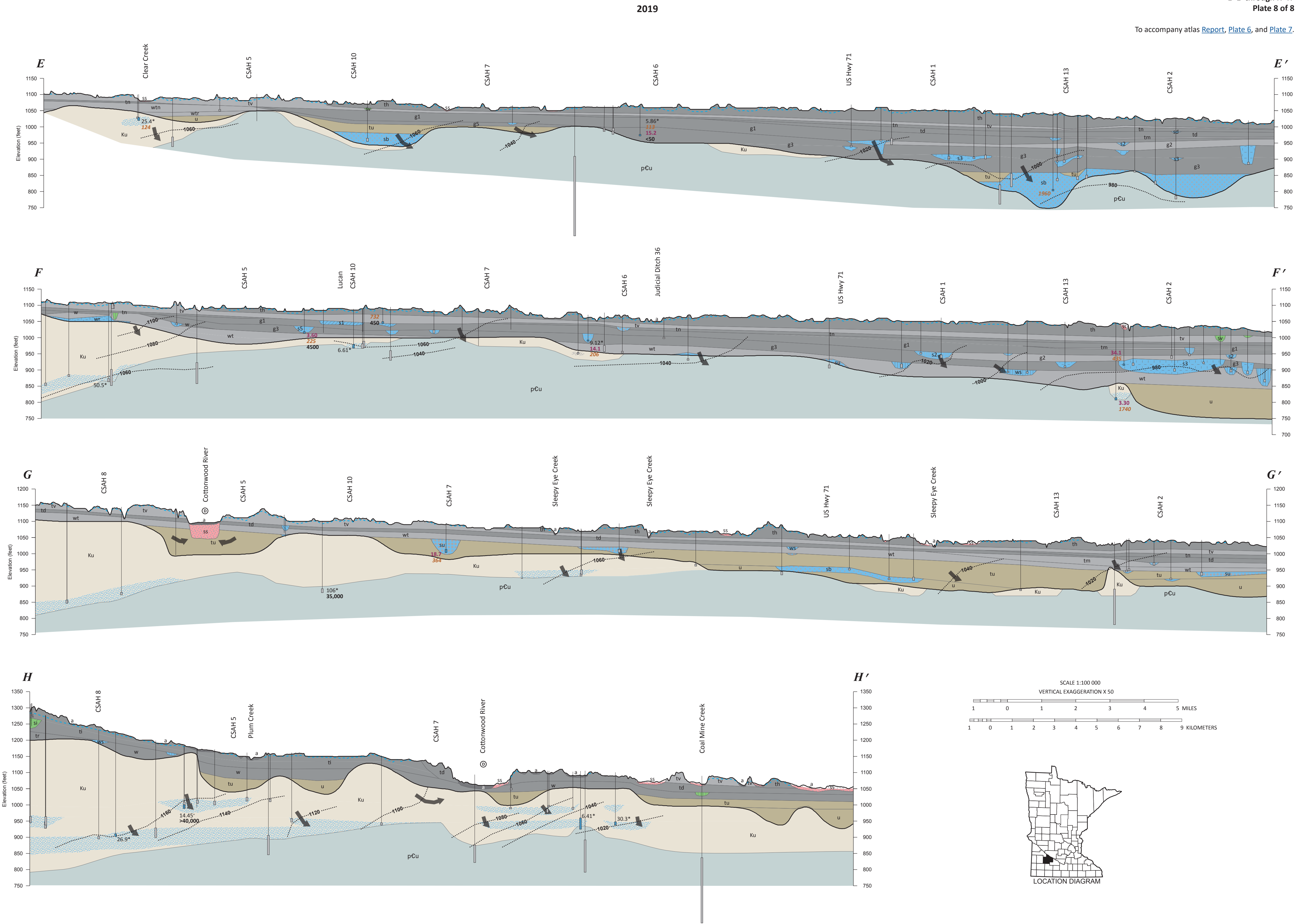


To accompany atlas [Report](#), [Plate 6](#), and [Plate 7](#).



This map was compiled and generated in a geographic information system. Digital data products are available on the DNR County Atlas Program [page](#) (mndnr.gov/groundwatermapping).

This map was prepared from publicly available information. Every reasonable effort has been made to ensure the accuracy of the factual data on which this map interpretation is based. However, the DNR does not warrant the accuracy, completeness, or any implied uses of these data. Users may wish to verify critical information; sources include both the references in the report and information on file in the offices of the Minnesota Geological Survey and the DNR. Every effort has been made to ensure the interpretation shown conforms to sound geologic and cartographic principles. This map should not be used to establish legal title, boundaries, or locations of improvements.

Base modified from Minnesota Geological Survey, Redwood County Geologic Atlas, Part A, 2016.

Universal Transverse Mercator projection, zone 15N, North American Datum of 1983. North American Vertical Datum of 1988.

MINNESOTA DEPARTMENT OF NATURAL RESOURCES

500 Lafayette Road
St. Paul, MN 55155-4025
888-646-6367 or 651-296-6157
mndnr.gov

This information is available in alternative format on request.

The Minnesota DNR prohibits discrimination in its programs and services based on race, color, creed, religion, national origin, sex, public assistance status, age, sexual orientation, or disability. Persons with disabilities may request reasonable modifications to access or participate in DNR programs and services by contacting the DNR ADA Title II Coordinator at info.dnr@state.mn.us or 651-296-6157. Discrimination inquiries should be sent to Minnesota DNR, 500 Lafayette Road, St. Paul, MN 55155-4049; or Office of Civil Rights, U.S. Department of the Interior, 1849 C Street NW, Washington, DC 20240.

© 2019, State of Minnesota, Department of Natural Resources and the Regents of the University of Minnesota