

CAMP RIPLEY ARCHERY HUNT REFERENCE MAP

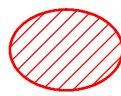
CAMP RIPLEY MILITARY RESERVATION CAMP RIPLEY STATUTORY GAME REFUGE

THIS CONTROLLED HUNT IS MANAGED BY THE DEPARTMENT OF NATURAL RESOURCES, IN COOPERATION WITH THE DEPARTMENT OF MILITARY AFFAIRS AND CENTRAL LAKES COLLEGE.

ALL VEHICLES AND PARTICIPANTS MUST BE REGISTERED AT THE HUNT CHECK STATION PRIOR TO PROCEEDING TO THE HUNTING AREA.

ALL VEHICLES AND PARTICIPANTS ARE SUBJECT TO INSPECTION PRIOR TO LEAVING THE REFUGE.

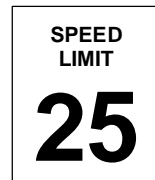
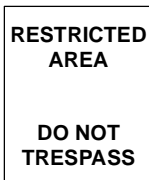
**CLOSED ZONES
OFF-LIMITS TO HUNTING
INCLUDING AMMUNITION
"DUD" AREAS**



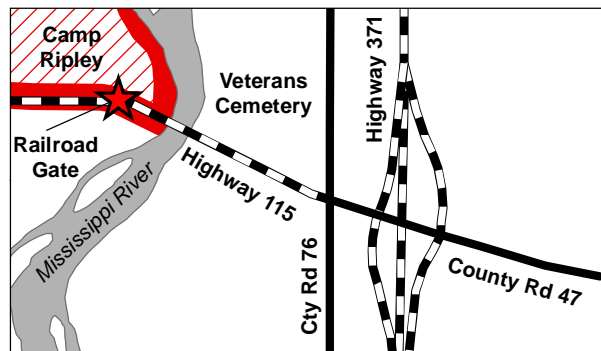
**CAMP RIPLEY
BOUNDARY**



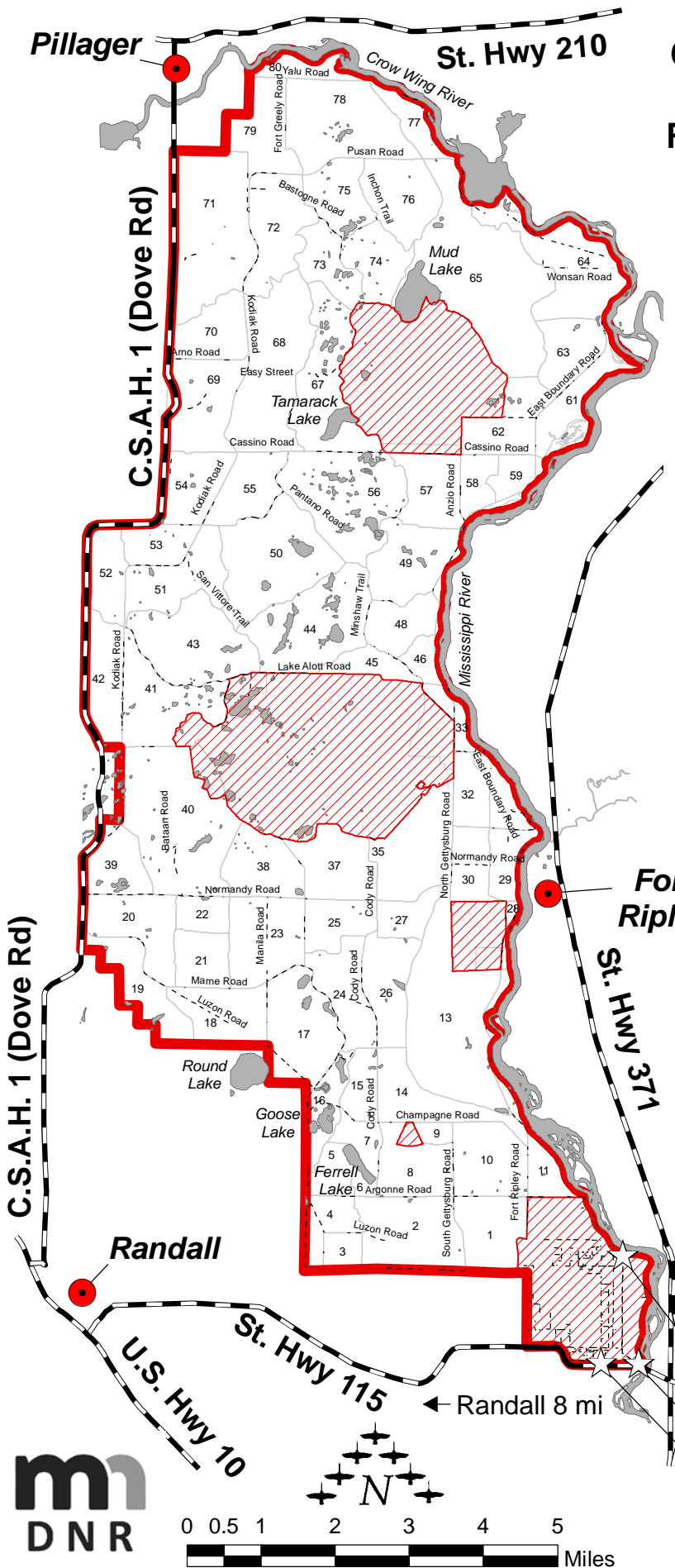
**OBEY THESE
SIGNS**



↑ 24 miles to Brainerd
↓ 5 miles to Little Falls



★ HUNT CHECK STATION (STOP HERE)
 — RAILROAD GATE (ENTRANCE & EXIT)
 — MAIN GATE (EXIT ONLY)



CAMP RIPLEY ARCHERY SEASON

Cooperation with these rules and instructions will ensure an enjoyable and safe hunt for everyone involved.

1. **LICENSE & SPECIAL HUNT PERMIT:** You must have a valid archery license and special hunt permit in your possession to enter and hunt at Camp Ripley, and must carry your license and hunt permit with you while hunting. Non-hunters are excluded, and pre-hunt scouting is **NOT** allowed. Permits are not transferable to anyone else. Archers may be checked for legal permit and license in the hunting area.

Based on the conditions of your permit, **ONLY DEER MAY BE HUNTED**. The bag limit for this year's hunt is 2 deer, but only one may be a buck. You must purchase your regular archery license (valid for either sex) prior to the start of shooting hours. Bonus permits may be used to take antlerless deer. Party hunting is allowed. Since Camp Ripley is a Statutory Game Refuge **all other wildlife species (including coyote & porcupine) are protected and may not be taken.**

2. **DEER REGISTRATION:** All deer taken **MUST** be presented and accessible for inspection and registration at the hunt Check Station. Teeth and other samples may be taken for research purposes. Your permit and license must also be presented. You **MUST** clear the hunt area by 7:30 p.m. each night. **Tracking & recovery assistance will NOT be provided.**
3. Avoid hunting around closed areas. **DO NOT GO INTO ANY CLOSED AREA SHOWN ON THE MAP, EVEN TO PURSUE A WOUNDED DEER! DNR AND MILITARY STAFF WILL NOT RECOVER DEER THAT ENTER CLOSED AREAS. IF A WOUNDED DEER ENTERS A CLOSED AREA, YOU LOSE THE DEER! DO NOT PASS BEYOND ANY CLOSED BARRIER, GATE, OR WARNING SIGN FOR ANY REASON – ENTERING CLOSED AREAS PRESENTS SIGNIFICANT RISK OF DEATH OR BODILY HARM AND CONSTITUTES TRESPASS. IT IS YOUR RESPONSIBILITY TO KNOW WHERE YOU ARE AT ALL TIMES AND TO TAKE NECESSARY PRECAUTIONS.** Closed areas are well posted. Violators of this rule will have their bows seized and court appearance arranged by DNR Officers.
4. **DUDS:** Anyone attempting to disturb or remove any military equipment will be prosecuted. This includes all types of armaments and ammunition. **Report all DUDS** found to the hunt Check Station or Military staff and **DO NOT HANDLE**. Mark duds with string or flagging on nearby vegetation, and obtain coordinates if using a GPS unit.
5. **WEAPONS:** Bring only legal archery equipment. Crossbows are allowed if you are 60 or older, or with a valid permit. Firearms are not allowed. Bows must be unstrung, cased or contained in the trunk of a car when being transported.
6. Littering in the hunt area is strictly prohibited and subject to penalties. This includes flagging/marketing tape, which must be removed on the final day of your hunt. **IF YOU PACK IT IN, PACK IT OUT!**
7. **ALCOHOL USE:** Alcohol is permitted in the camping area only. Hunting while intoxicated is unlawful. Per Camp Ripley rules, **absolutely no alcohol is permitted in the hunt area**. Alcohol found in the entry-line during morning check-in, or in the hunt area will be seized, and those found using alcohol in the hunt area may be escorted off base and have their hunt permit revoked at discretion of military security.
8. Vehicles must be in designated camping and parking areas or in the double entry-line overnight. **Saving places or butting** in the double entry-line is **NOT** allowed. **Do not block roads or trails** anywhere on base.
9. **No open fires are permitted** anywhere except in an emergency. However, portable grills are allowed in the camping area.
10. **SPEED LIMIT:** The speed limit is 25 MPH. If you are caught speeding you may be escorted off base and have your hunt permit revoked at the discretion of military staff. Road conditions may be extremely poor during wet weather (travel at your own risk). Stay on the main roads if you are not driving a 4-wheel drive vehicle.
11. **ATVs & TREE STANDS:** ATVs and permanent tree stands are **NOT** allowed. All personal property (including portable stands) **MUST** be removed each night. Stands left overnight may be used by anyone, and may be confiscated by DNR officers.
12. **RADIOS & CELL PHONES:** Per state law (M.S. 97B.085, Subd. 1) radio devices **MAY NOT** be used to assist in taking deer. However, use of 2-way radios and cell phones for safety is allowed & encouraged.
13. The Commissioner of Natural Resources may close the season without prior notice if violations of the above regulations occur.

Stay Alive - Do Not handle Duds or Shells

**HUNTING IN CAMP RIPLEY IS A PRIVILEGE, NOT A RIGHT – PRESERVE THAT PRIVILEGE
BY RESPECTING ALL PROPERTY, KEEPING THE CAMP CLEAN, AND FOLLOWING REGULATIONS**

ARRIVAL & ACCESS INSTRUCTIONS AT CAMP RIPLEY

1. **ARRIVAL PROCEDURES:** In order to facilitate efficient and safe movement of traffic for bow hunters and other motorists using the roadways in the area of Camp Ripley, please adhere to the following arrival instructions (traffic control officers will be patrolling the area):

At all times, **enter** Camp Ripley **only** through the east Railroad Gate by the Mississippi River Bridge on Highway 115, and **exit** from either the Main Gate or the Railroad Gate as noted on the enclosed maps. **The earliest arrival time to enter Camp Ripley for your hunt is 5:00 a.m. the day preceding your hunt. Do not arrive or line up anywhere on public roads outside of Camp before this time, and do not attempt to enter the railroad gate the day before your hunt until directed by traffic control officers!** If needed, vehicles may stage on CR76 north and south of MN Hwy 115, **but must be occupied at all times.** When needed, traffic control officers at the intersection of CR76 and MN Hwy 115 will alternate the flow of traffic onto MN Hwy 115 after 5:00 a.m. As directed, hunters will then drive onto MN Hwy 115 and enter the east railroad gate. If you arrive and park on CR76 before 5:00 a.m. the day before the hunt you may be forced to leave the area at the discretion of law enforcement. **DO NOT** stage or park on MN Hwy 115, CR47 or MN Hwy 371 at any time! In no event can any vehicle block the movement of traffic at the interchange of MN Hwy 115 and MN Hwy 371.

If you are arriving from the south, take MN Hwy 371 north of Little Falls to the CR46 exit. Go two blocks west on CR46 and then turn north onto CR76 and stage on the right shoulder of CR76 south of MN Hwy 115. If you are coming from the north on MN Hwy 371, exit at CR48, and go west and then immediately south on CR76 (parallels MN Hwy 371 and serves as a frontage road) and stage on the right shoulder north of MN Hwy 115. Hunters coming from the west on MN Hwy 115 or from the east on CR47 must plan accordingly and also stage or park on CR76.

Do not block driveways or turn lanes, and allow plenty of space around these areas. **CAUTION:** Parking on the road shoulder is at your own risk and inherently dangerous due to potential of collision with vehicles operating at highway speeds. Be careful, and use extreme vigilance when parking and moving around parked vehicles on the shoulder.

2. PETS, FIREARMS & ATVs are **NOT** allowed at Camp Ripley.
3. **HUNT PERMIT REQUIRED AT THE EAST GATE:** Have your valid Camp Ripley permit and Driver's License/I.D. ready for inspection upon entry at the east railroad gate. **If you lose your special hunt permit, your I.D. will be verified by security staff upon arrival at the east railroad gate. You will be allowed to proceed into Camp Ripley, but you MUST obtain a duplicate special hunt permit at the hunt Check Station the morning of the hunt.** In the event of a lost permit, we recommend you allow for enough time to obtain a duplicate before hunt staff begin checking-in the double-entry line.
4. After initial arrival at the east railroad gate, you will proceed to the double entry-line, the camping area, or billeting depending on your overnight stay circumstances (see rules 5, 7 & 9 below). **DO NOT park or camp in coned-off or taped-off zones within the camping area.** After initial arrival you may exit through the east railroad gate or main gate, and re-enter through the east railroad gate at any time of the day or night through 8:00 p.m. on the last day of your hunt.
5. **DOUBLE ENTRY-LINE:** After 5:00 a.m. the day before the hunt, and at 5:00 p.m. on day 1 of your hunt, this line will be allowed to form on the east edge of the road (East Motor Pool Road) beginning at the hunt Check Station (see rule 7 below regarding campers & trailers in line). Vehicles may be left unattended in the line overnight. However, butting in the entry-line is **NOT** allowed. **If caught butting in line, you will be escorted to the end or detained until the line is completely checked through in the morning.** After the entry-line has been checked through each morning, vehicles may **NOT** be parked anywhere on the road. **DO NOT** block any roads or trails in Camp Ripley. Vehicles or trailers blocking roads or trails will be towed as needed.
6. **MORNING CHECK-IN PROCEDURES & VEHICLE REGISTRATION FORM:** All hunters must pass through the hunt Check Station before entering and after exiting the hunt area. Archers will receive last-minute instructions at the hunt Check Station and be allowed to enter the hunt area beginning at 5:45 a.m. each morning of the 1st hunt, and at approximately 6:00 a.m. each morning of the 2nd hunt. Enclosed you will find a vehicle registration form with your permit for morning check-in each day of your hunt. If you lose your vehicle registration forms, duplicate forms may be obtained at the east railroad security gate. **Vehicle registration forms MUST be filled out completely before reaching the hunt Check Station each morning** -- failure to do so will delay your entry to the hunt area. Please be prepared so that you do not delay the line.

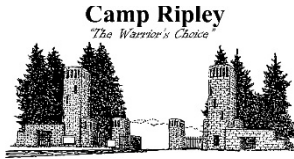
You will not need to present your permit or I.D. at the hunt Check Station during morning check-in unless your permit is lost. You **MUST** exit the hunt area by 7:30 p.m. each night. Unless delayed while registering deer, you must leave Camp Ripley by 8:00 p.m. on the last day of your hunt. Please plan accordingly to comply with these timeframes.

(CONTINUED – OVER)

ARRIVAL AND ACCESS INSTRUCTIONS -- CONTINUED

7. **CAMPING AREA:** Camping is allowed to the west of Motor Pool road only – no water or electricity is available. Absolutely **NO** tents, camper-trailers, or extra vehicles are to be parked to the right (east) side of the double lineup unless instructed to do so by security. To minimize traffic congestion, camper-trailers (including portable fish house trailers) are **NOT** allowed in the entry-line, and are **NOT** allowed down-range in the hunt area – they must remain in the camping area. Only passenger vehicles, pickup campers, RV motor homes used as primary means of transportation, and utility trailers meant for hauling gear and big game are allowed in the entry-line and hunt area. Please plan accordingly. Those found with camper-trailers in the lineup will be required to disconnect it in the camping area before they will be allowed to enter the hunt area.

If your camping circumstance will involve the use of a contained wood stove, or if you will be transporting wood that will be used outside of the installation after the hunt, only firewood purchased at a state park or from a DNR-approved vendor may be brought onto Camp Ripley. The receipt supplied by the approved vendor must be retained as proof of purchase. Visitors bringing unapproved firewood onto Camp Ripley need to surrender it and may be fined.
8. **TOILETS AND GARBAGE SERVICES:** Portable toilets and garbage dumpsters will be provided near the camping area. Do not litter or move the barrels and dumpsters. Please take your garbage with you if barrels and dumpsters are full.
9. **FACILITIES & ROOMS:** Access to additional facilities within the main base will be made available during the hunt this year, including a limited number of rooms for overnight stay. **Rooms may not be reserved until 2 weeks prior to your scheduled hunt.** See the enclosed letter and map of the main base for details and instructions on accessing these facilities. However, if you do use these facilities, note that you must still arrive and depart the installation as instructed above.
10. **TOWING & LOCK-OUT SERVICE:** Towing services are available through local vendors at the owner's expense. Lock-out service is also available, with liability waiver.
11. Please use your hunt map and read and follow the hunt regulations on the back. **DO NOT** request maps from the military during the hunt. If you become lost or separated from your party, contact another archer, DNR personnel, or military staff for assistance immediately. Keep a first aid kit in your vehicle or on your person. In the event of accidents or injuries, contact DNR or military staff for assistance. Do not move anyone who has possible spinal or internal injuries. **For emergencies during the hunt you may contact Range Control at (320) 616-3137, or Camp Ripley Security at (320) 632-7375.**
12. Falling from trees is the leading source of bow hunting related accidents. Use extreme caution when erecting and hunting out of tree stands, especially early in the morning, and use a safety harness whenever possible.
13. Report any illegal activity to Military or DNR staff patrolling the hunt area, or to the hunt check station.
14. Per Camp Ripley rules, please note that the use of cell phones is NOT allowed while driving a motor vehicle within the main base on the south end of the installation.
15. For general information on the Camp Ripley Regular Archery Hunt, call Dr. Bill Faber at Central Lakes College at 800-933-0346, ext. 8082, or call the Little Falls Area Wildlife Office at 320-616-2468, extension 222 or 223. Other questions concerning deer management at Camp Ripley may be answered by calling the Camp Ripley Environmental at 320-616-2722.
16. Questions concerning lottery drawing results must be directed to the DNR Information & License Center at 1-888-646-6367 in early-September.
17. Due to military and state agency training needs, unexpected conflicts may arise after these rules and instructions are published that may result in changes to entry procedures and camping locations. Your understanding and cooperation regarding any changes from published instructions is appreciated. At all times, please follow instructions from military security regarding entry, line-up, and camping when you arrive at Camp.
18. Ongoing construction in the hunt area may result in some last-minute closed (no trespass) areas that do not appear on the enclosed map. Military security will try to alert you to any such last-minute changes, but regardless, it is your responsibility to obey all areas posted as off-limits or restricted use.



DEPARTMENT OF THE ARMY
OFFICE OF THE SENIOR COMMANDER
15000 HIGHWAY 115, CAMP RIPLEY
LITTLE FALLS MINNESOTA 56345-4173



Dear Bow Hunter,

August 1, 2019

Congratulations on being selected to hunt on Camp Ripley. You are being given an opportunity to hunt an area renowned for producing record setting white-tailed deer. My staff and I are proud to be good stewards of training site resources, home to a vast population of animals.

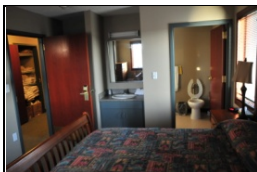
If this is your first time coming to Camp Ripley congratulations and welcome. You are in for a very exciting and unique experience. There are several things I would like to bring to your attention before you hunt on Camp Ripley.



Viking Club
Mon-Wed: 1730-2200
Thurs: 1530 – 2200
Fri-Sat: 1530-2400

We have a great deal to offer while visiting our 53,000 acres of state owned land. I want to encourage you to take advantage of the Viking Club, the Snack Bar, the Post Exchange and our billeting resources.

Camping in the designated area is free-of-charge but if you are looking for something different and have not made arrangements for a place to stay, please take advantage of the housing available at Camp Ripley. Reservations for housing may be made no more than two weeks prior to your hunt. Contact Camp Ripley Billeting at 320-616-3140 for availability, room rates, and make reservations.



**Camp Ripley
Housing**
320-616-3140
Rooms start at \$25

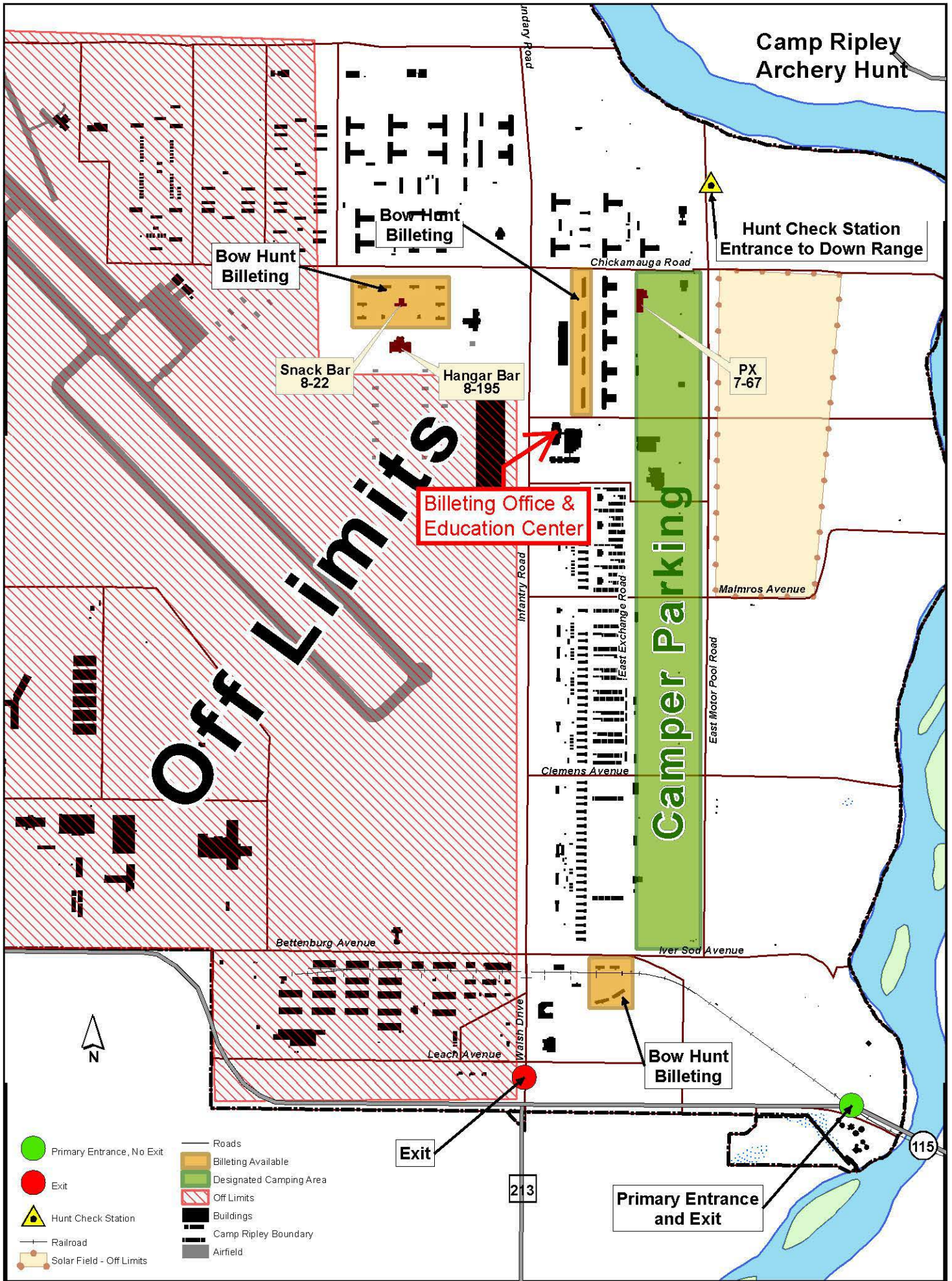
I want your trip to Camp Ripley to be a safe one so please obey the speed limits, always wear your seat belt and do not use your cell phone while driving. Speed limits are posted and will be enforced on the installation. Do not drink and drive and do not drink and hunt. Again, congratulations and have a safe hunt. Good Luck.

Sincerely, Lowell E. Kruse
Brigadier General, MN Army National Guard
Camp Ripley Senior Commander

Post Exchange
Tues – Sat
Open 1000-1700
Some restrictions
will apply**

**No tobacco, alcohol, military issued items or high ticket items for persons without a military ID.

**Obey Posted
Speed Limits
Down Range
Speed Limit is
25 MPH**



Camp Ripley Archery Hunt

Bow Hunt Billeting

Bow Hunt Billeting

Hunt Check Station Entrance to Down Range

Snack Bar 8-22

Hangar Bar 8-195

PX 7-67

Billeting Office & Education Center

Camper Parking

Off Limits

Bow Hunt Billeting

Exit

Primary Entrance and Exit

- Primary Entrance, No Exit
- Exit
- Hunt Check Station
- Railroad
- Solar Field - Off Limits
- Roads
- Billeting Available
- Designated Camping Area
- Off Limits
- Buildings
- Camp Ripley Boundary
- Airfield



213

115

DATE: _____ LICENSE PLATE NUMBER: _____ STATE: _____

**VEHICLE AND OCCUPANT REGISTRATION
RELEASE AND LIABILITY**

VEHICLE - CIRCLE ONE: CAR PICK-UP VAN RV SUV COLOR _____

I, THE UNDERSIGNED, UTILIZING THE CAMP RIPLEY MILITARY RESERVATION AND ITS FACILITIES, UNDERSTAND THAT I DO SO AT MY OWN RISK, HOLDING CAMP RIPLEY, THE STATE OF MINNESOTA, THEIR OFFICERS AND EMPLOYEES FREE AND HARMLESS OF ALL LIABILITY FOR SUCH USE.

PRINTED NAME

SIGNATURE

CITY

1. _____

2. _____

3. _____

4. _____

5. _____

6. _____

7. _____

****THIS FORM MUST BE SIGNED BY ALL VEHICLE OCCUPANTS AND TURNED IN AT THE HUNT CHECK STATION PRIOR TO ENTERING THE HUNTING AREA.**

DATE: _____ LICENSE PLATE NUMBER: _____ STATE: _____

**VEHICLE AND OCCUPANT REGISTRATION
RELEASE AND LIABILITY**

VEHICLE - CIRCLE ONE: CAR PICK-UP VAN RV SUV COLOR _____

I, THE UNDERSIGNED, UTILIZING THE CAMP RIPLEY MILITARY RESERVATION AND ITS FACILITIES, UNDERSTAND THAT I DO SO AT MY OWN RISK, HOLDING CAMP RIPLEY, THE STATE OF MINNESOTA, THEIR OFFICERS AND EMPLOYEES FREE AND HARMLESS OF ALL LIABILITY FOR SUCH USE.

PRINTED NAME

SIGNATURE

CITY

1. _____

2. _____

3. _____

4. _____

5. _____

6. _____

7. _____

****THIS FORM MUST BE SIGNED BY ALL VEHICLE OCCUPANTS AND TURNED IN AT THE HUNT CHECK STATION PRIOR TO ENTERING THE HUNTING AREA.**