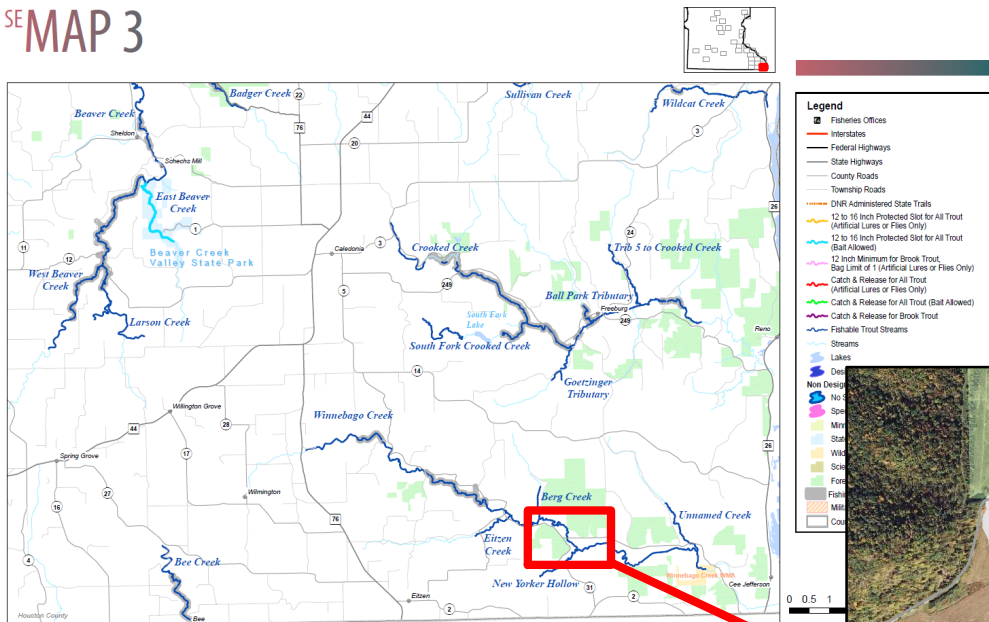


Winnebago Creek Map 3 Houston County

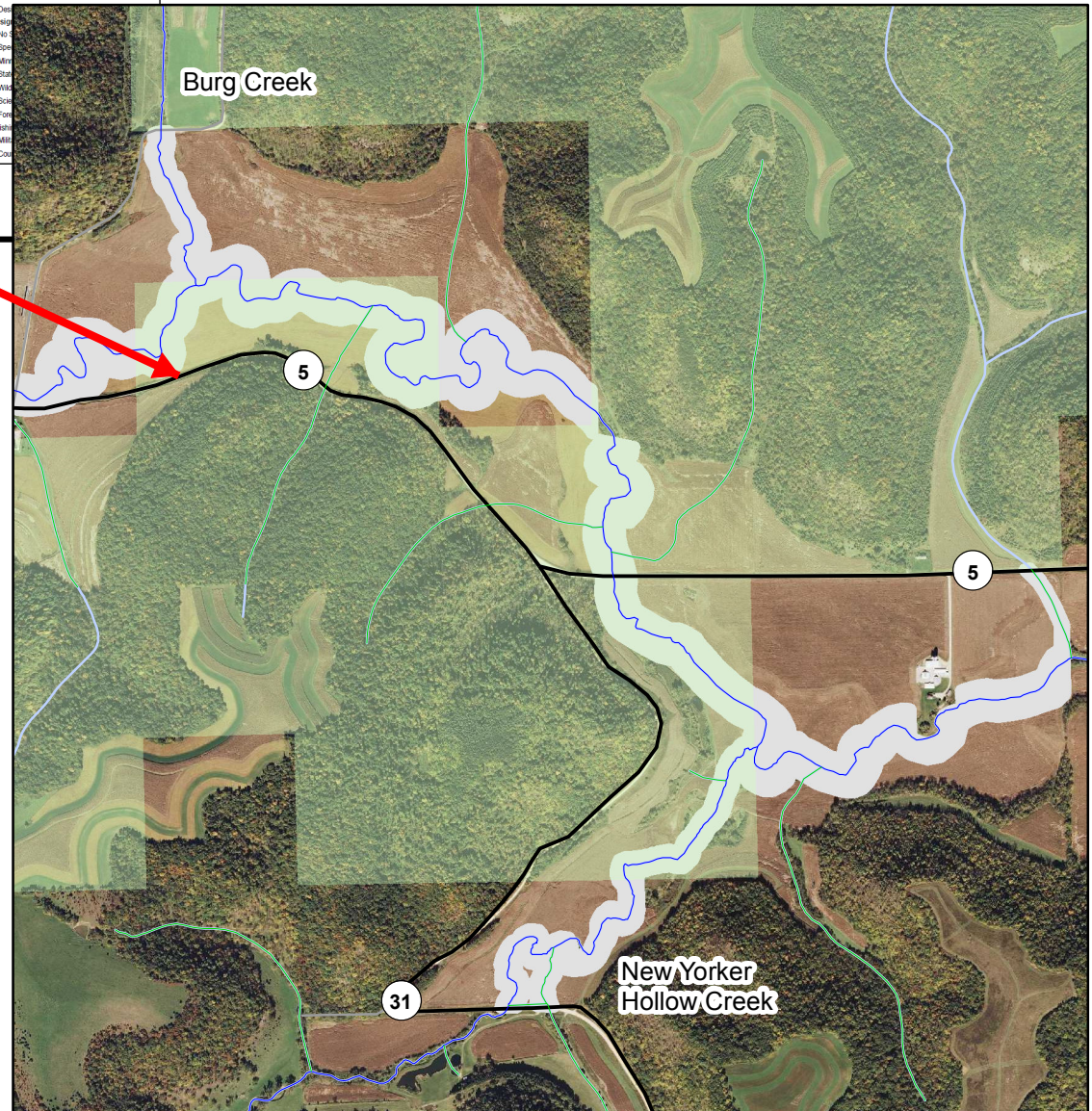
Winnebago Creek Trout Fishing Easement 2017



Hunting, other recreational activities, and dogs are not permitted without the landowner's permission in easement areas.

No unauthorized motor vehicles are allowed within easement areas. Parking is along the road. Do not block field entrances.

0 0.1 0.2 0.4 0.6 0.8 Miles



Legend

- Designated Trout Stream
- Protected Tributary to Designated Trout Stream
- DNR land with access
- State AMA Acquisitions Fishing Easement