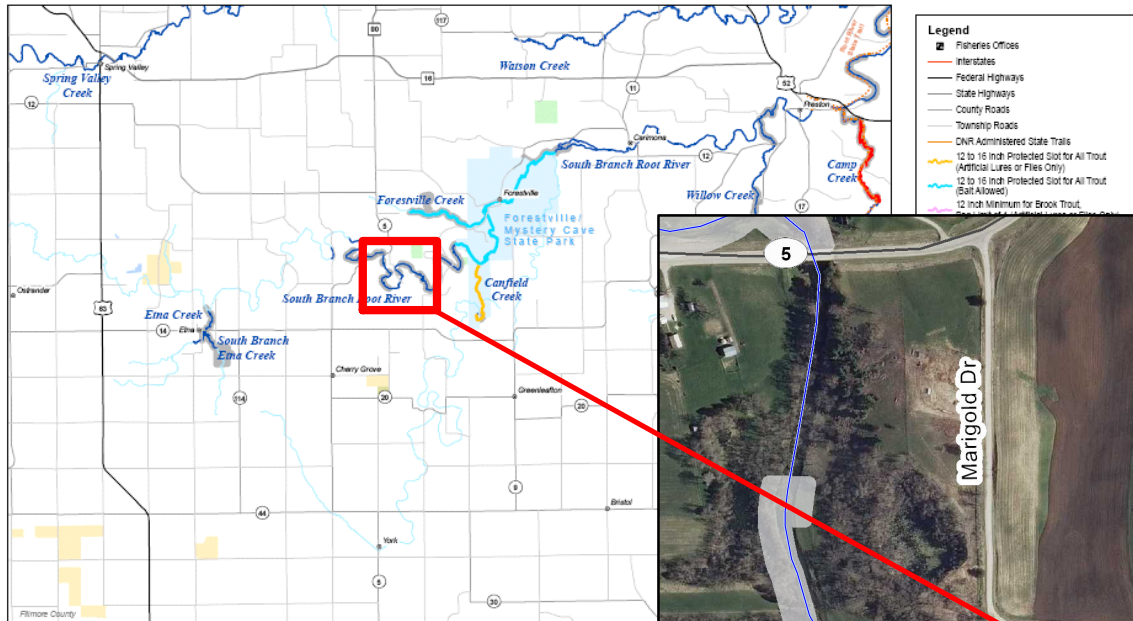


South Branch Root River

Fillmore County

South Branch Root River Trout Fishing Easement



Hunting, other recreational activities, and dogs are not permitted without the landowner's permission in easement areas.

No unauthorized motor vehicles are allowed within easement areas. Parking is along the road. Do not block field entrances.

0 0.055 0.11 0.165 0.22 Miles



Legend

- Designated Trout Stream
- Protected Tributary to Designated Trout Stream
- State AMA Acquisitions - Fishing Easement

