

- Explanation**
- Lithology from County Well Index Logs
- Soil or fill
 - Yellow or brown clay or till
 - Gray or blue clay or till
 - Sand, or sand and gravel
 - Gravel
 - Shale, usually gray
 - Coal
 - Sandstone
 - Quartzite and granite
- Interpreted Stratigraphy
- Oxidized glacial sediment, usually glacial till
 - Unoxidized glacial sediment, usually glacial till
 - Cretaceous shale and sandstone
 - Crystalline bedrock, usually Precambrian Sioux Quartzite
 - Sand, sand and gravel, or gravel
- Boundary between Bemis and Verdi phases of deposition

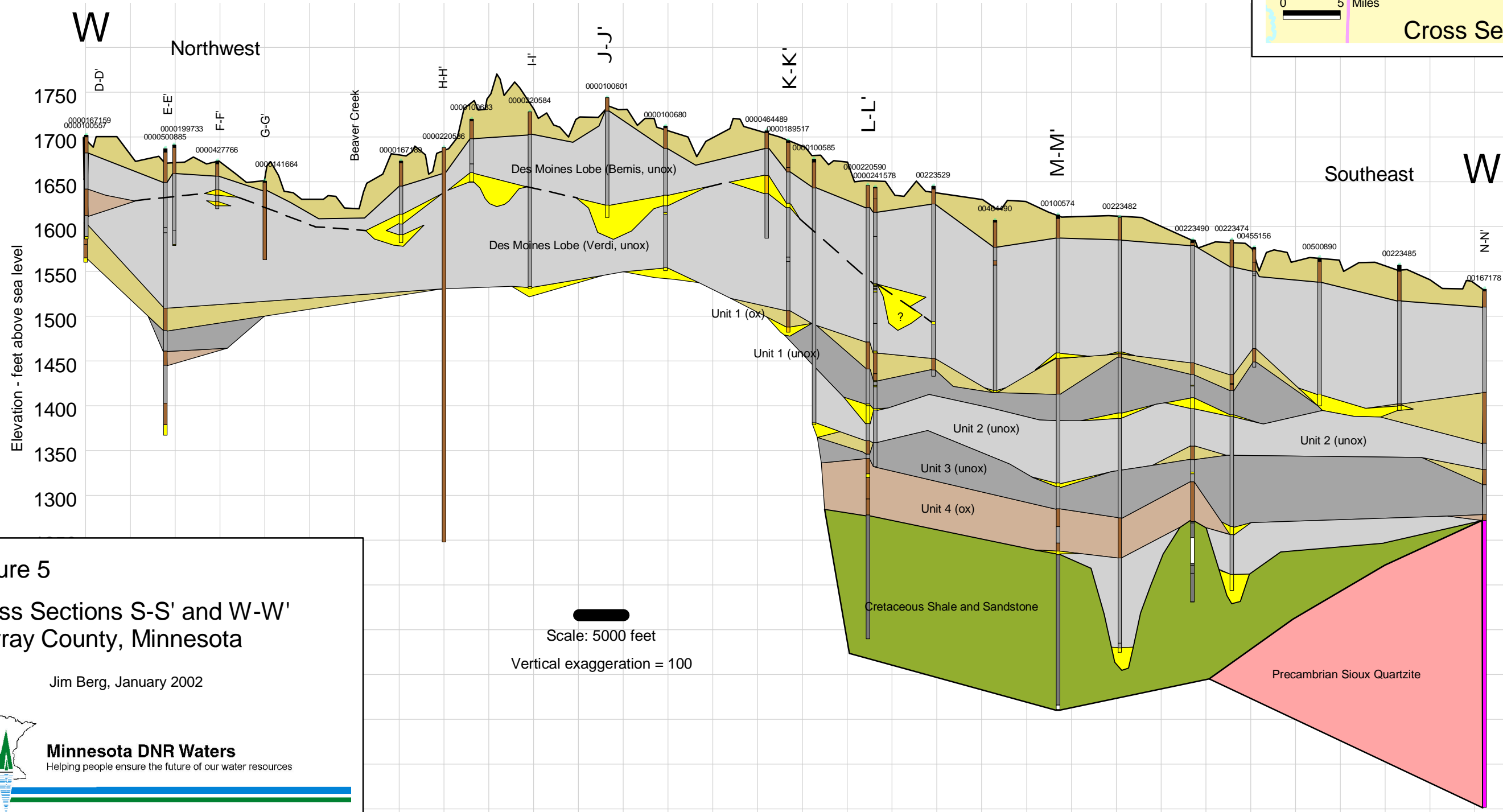



Figure 5
Cross Sections S-S' and W-W'
Murray County, Minnesota

Jim Berg, January 2002



Minnesota DNR Waters
 Helping people ensure the future of our water resources