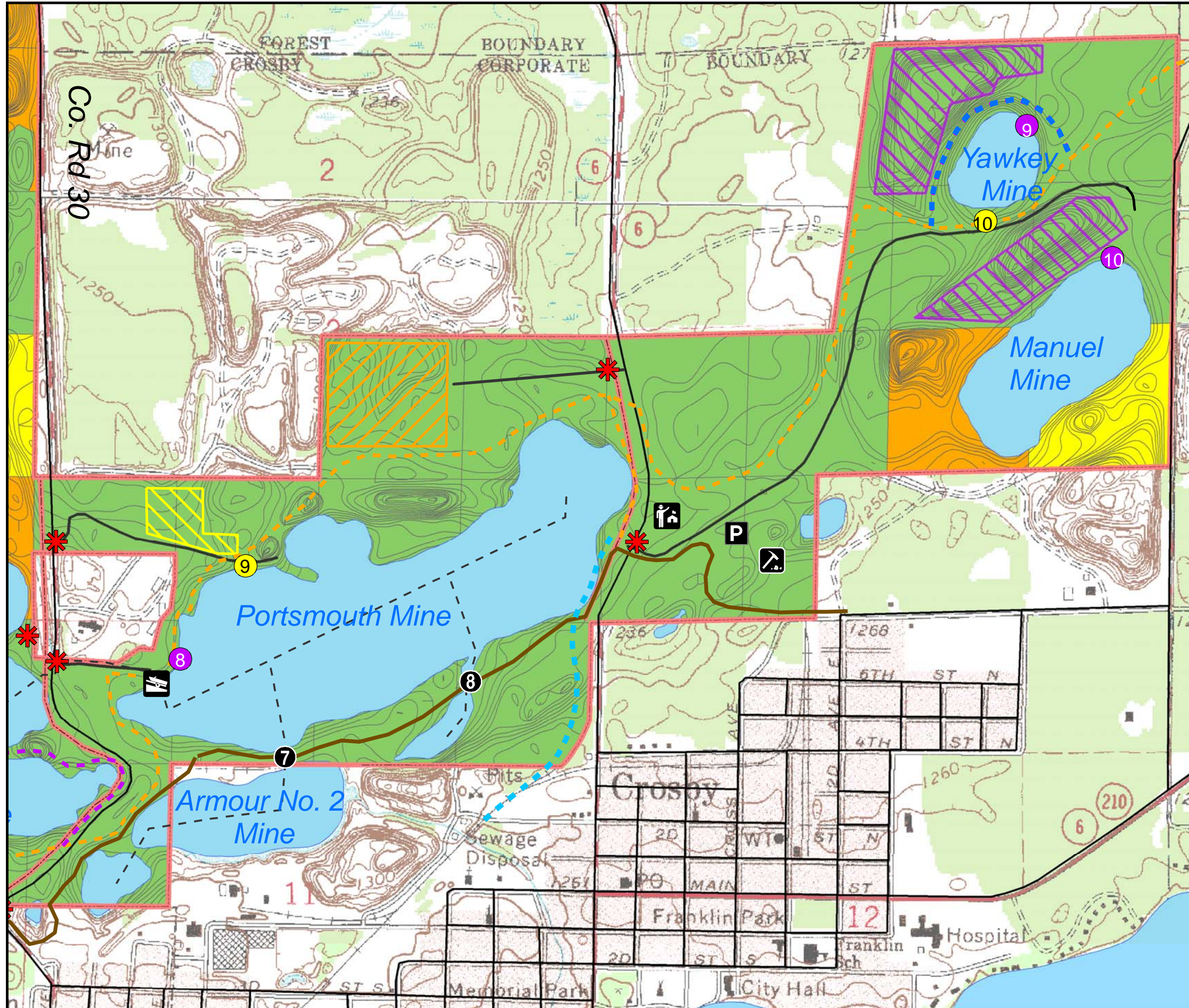
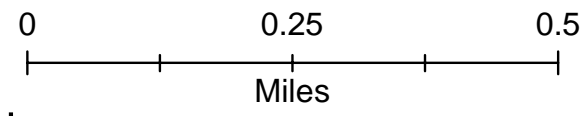


Development of Portsmouth and Yawkey Units Cuyuna Country State Recreation Area



- Headquarters (Option B)
- Existing Trailhead Parking Area
- Boat Ramp Access
- Croft Mine
- Recreation Area Entrances
- Shore Fishing Facilities
- Scuba Diving Sites
- Portages
- Snowmobile
- Hiking, Mtn. Biking, and XC Skiing
- Hiking and Mountain Biking
- Canoe/Kayak Routes and Portages
- Cuyuna Lakes State Trail System:**
 - Existing Paved
 - Proposed Unpaved
- Overnight Use Areas
- Shooting Range (Option B)
- Mountain Biking Area
- Recreation Area Roads
- Contours (5 Foot Interval)



MN Department of Natural Resources
Division of Parks and Recreation
Colin Kelly 3.28.08