

WHAF Google Earth Flyover Instructions

Purpose:

A watershed flyover is a map animation created from a birds-eye perspective; the animation follows the main stem river within a major watershed, beginning at the headwaters and continuing downstream to the watershed outlet. These animations provide an engaging communications tool for orienting viewers to the watershed. Points of interest can be added to the map to highlight current or proposed projects. Flyovers can be run live to provide an interactive experience, or be combined with screen recording software (e.g., Screencast-O-Matic) to record the animation as a video file.

These instructions describe how to download a KMZ file from the [Watershed Health Assessment Framework \(WHAF\) map application](#), and create the animation using [Google Earth software](#).

Instructions:

Step 1:

Within the WHAF map application, click on the Charts & Reports button to expand the panel.

Step 2:

Select a major watershed; either use the drop-down menu to choose a watershed by name, or click on the map to set the location and the major watershed at that location will be selected.

Step 3:

Click on 'Download KMZ file'. The file will be saved into your computer's 'downloads' folder. For major watersheds with multiple main stem rivers, the 2 or 3 KMZ files will download together in a ZIP file.

The screenshot shows the WHAF interface with the 'Charts & Reports' panel expanded. The 'Major Watershed' dropdown is set to 'Redeye River'. The 'Google Earth Flyover' section has a 'Download (Kml File)' button highlighted. The bar chart shows the following data:

Land Cover Class	Percentage of Watershed Area
Water	1.0%
Development	3.9%
Barren	0.0%
Forest	37.1%
Shrub and Herbaceous	1.0%
Forest and Wetland	13.6%
Cultivated	26.4%
Wetland	17.0%

Step 4:

Open Google Earth, then drag and drop the KMZ file into the map window. The river line will be displayed on the map and the window will zoom to the river.

Step 5:

In the Places window expand the contents under the Temporary Places folder until you see the river layer, symbolized with the 3 point path icon. Select that layer so that it is highlighted in blue.

Step 6:

In the bottom right corner of the Places window, click on the Play tour button to begin the animation.

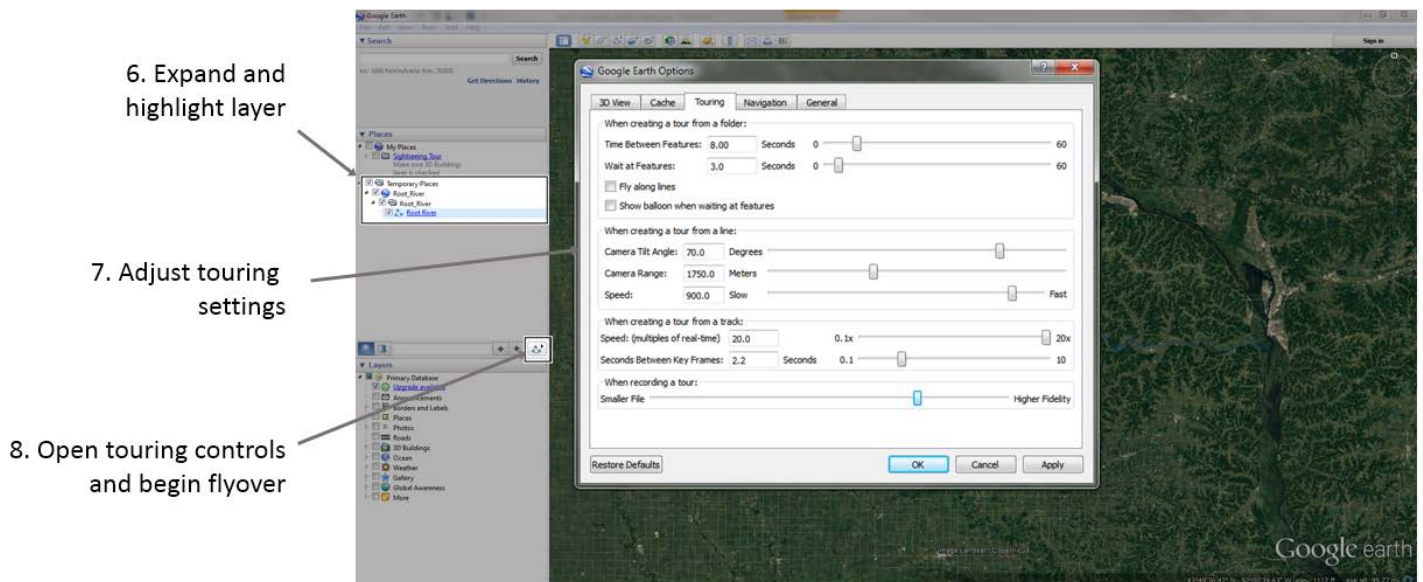
Step 7:

Open the options menu (Tools → Options → Touring). The touring options should be adjusted as follows.

- Camera tilt → 70 Degrees
- Camera Range → ~1500 Meters
- Camera speed → 900 Meters/Second
- Seconds between key frames → 2.0 seconds or greater

Step 8:

Select the 'Play Tour' button to display tour controls and begin the flyover. You can pause the tour to navigate; zoom, tilt and change direction at points of interest. Resume playing the tour and the flyover continues from the point at which you paused.



Still Need Help?

Contact the WHAF staff for additional assistance - whaf.dnr@state.mn.us