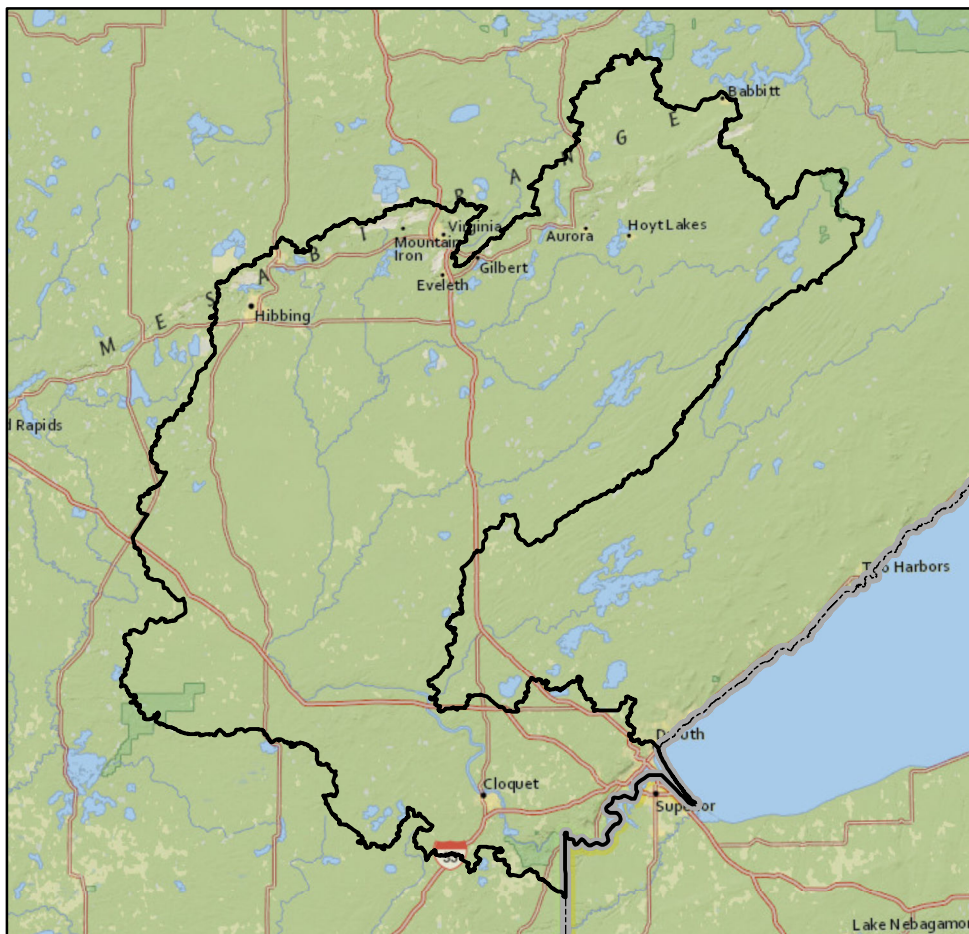
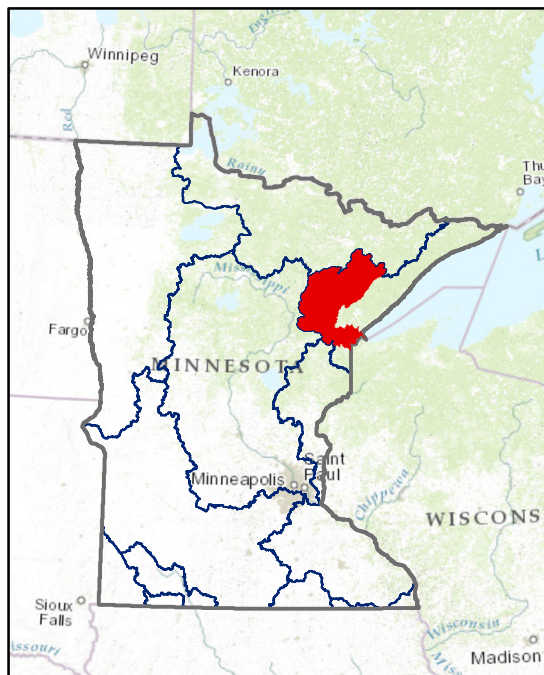


Watershed Report Card: St. Louis River



People and Places:

Watershed Population:

2000 census - 136,234
2010 census - 137,563

Largest Cities - Population:

Duluth - 86,265
Hibbing - 16,361
Cloquet - 12,124
Hermantown - 9,414
Virginia - 8,712

Counties - % of watershed:

St. Louis - 86 %
Carlton - 7 %
Itasca - 3 %
Aitkin - 2 %
Lake - 2 %

Watershed Area:

Watershed size:

1,831,468 acres
2,862 square miles

Watershed Surface Area:

Percent Land - 97 %
Percent Water - 3 %

HUC8 ID:

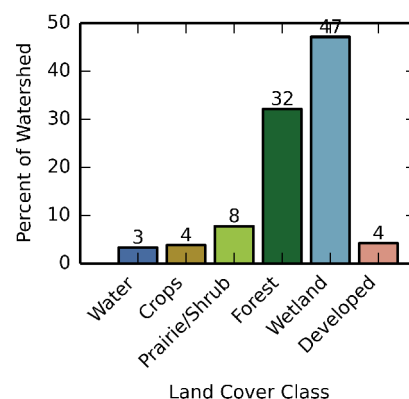
04010201

Basin Name:

Western Lake Superior (0401)

Land Use:

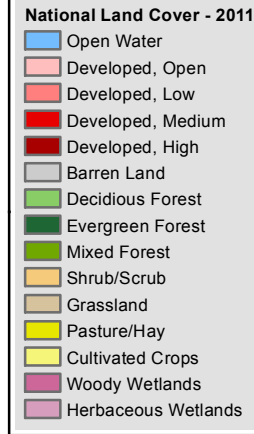
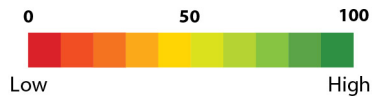
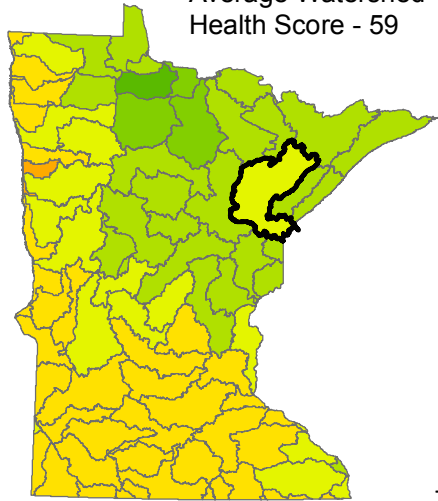
Percent of watershed area by land cover type:



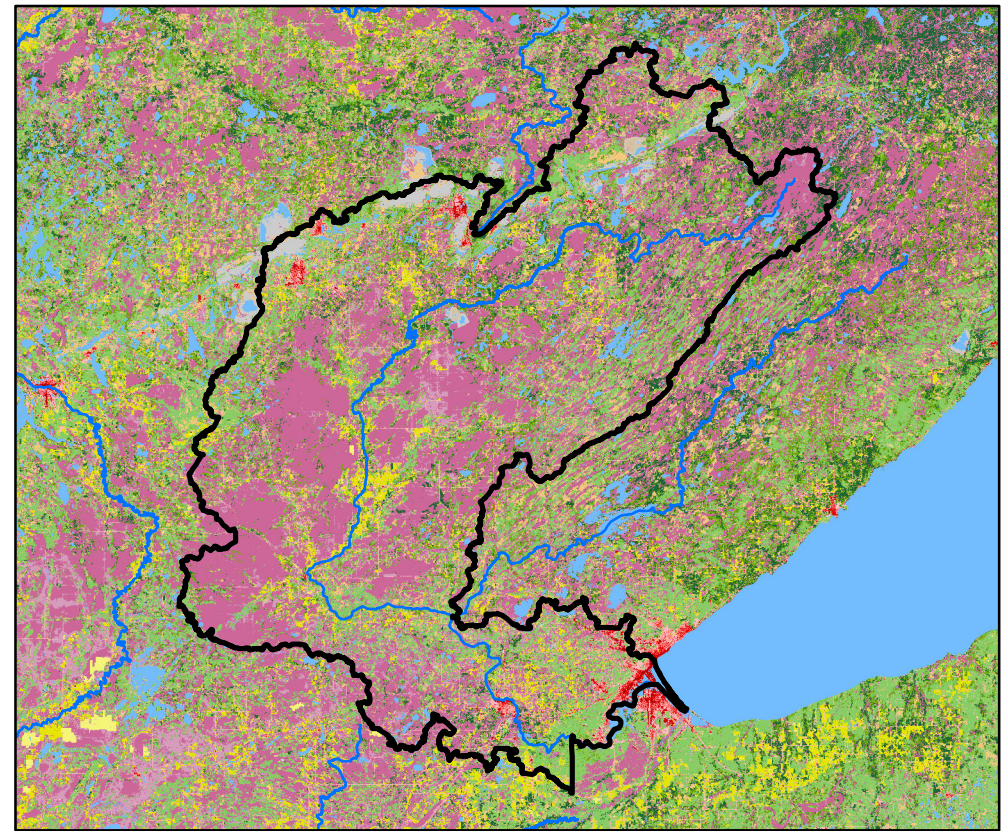
Watershed Health Report - Major Watershed

St. Louis River

Average Watershed
Health Score - 59



These health scores are calculated at the Major Watershed (HUC8) scale. Health score names followed by (*) are also calculated at the DNR Catchment scale (subdivided HUC12). Those results are reported on the following pages.



Hydrology

Component Health Score
(index average) 74

Index Scores

Perennial Cover*	94
Impervious Cover*	74
Water Withdrawal*	99
Flow Variability	54
Hydrologic Storage	72
Sub-Scores	
Altered Streams*	46
Surface Storage	97



Geomorphology

Component Health Score
(index average) 59

Index Scores

Soil Erosion Potential*	82
Groundwater Susceptibility	58
Climate Vulnerability	38



Biology

Component Health Score
(index average) 52

Index Scores

Terrestrial Habitat Quality*	48
Stream Species Quality*	69
Species Richness	56
At-Risk Species Richness	36



Connectivity

Component Health Score
(index average) 52

Index Scores

Terrestrial Habitat Connectivity	50
Aquatic Connectivity*	78
Riparian Connectivity*	95



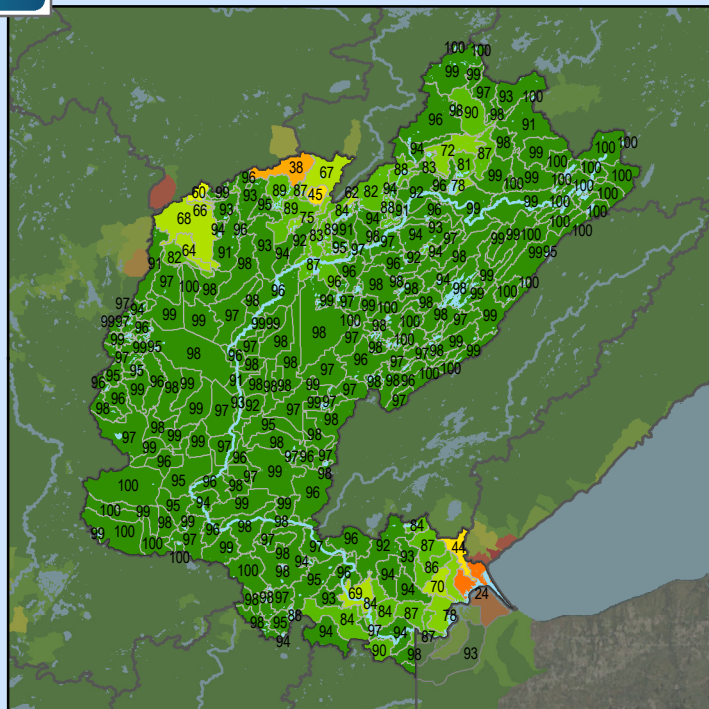
Water Quality

Component Health Score
(index average) 56

Index Scores

Non-Point Pollution Sources	75
Sub-Score	
Phosphorus Risk*	92
Localized Pollution Sources*	89
Assessments	25

Perennial Cover (2011)



Health Score Distributions:

St. Louis River

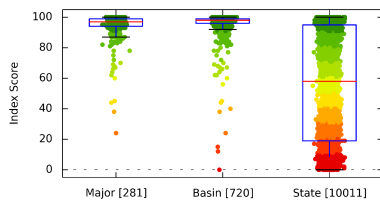
Min: 24

Max: 100

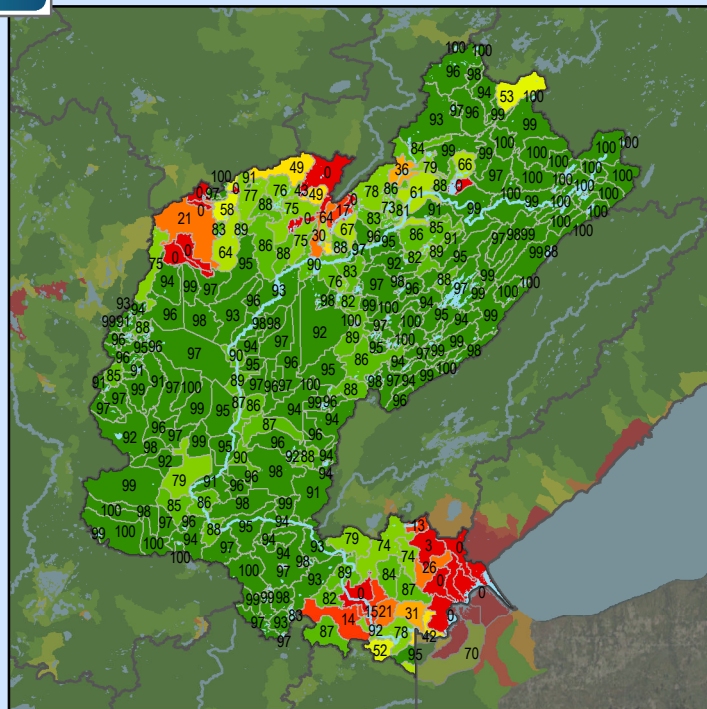
Median: 97.0

Mean: 93.94

Standard Dev: 9.7



Impervious Cover (2011)



Health Score Distributions:

St. Louis River

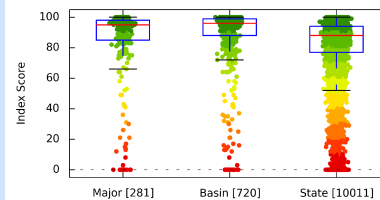
Min: 0

Max: 100

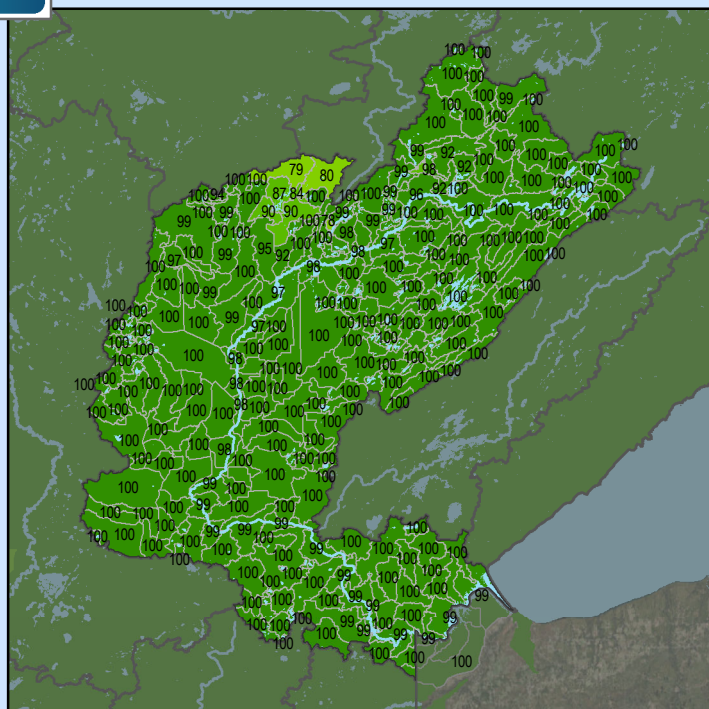
Median: 95.0

Mean: 83.6

Standard Dev: 26.69



Water Withdrawal Index



Health Score Distributions:

St. Louis River

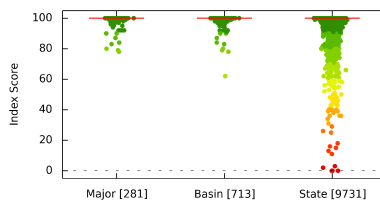
Min: 78

Max: 100

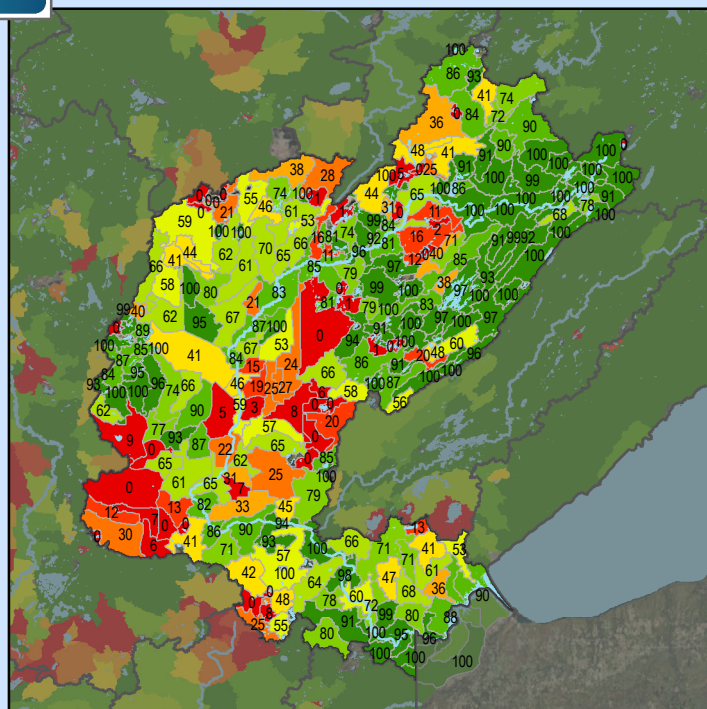
Median: 100.0

Mean: 99.16

Standard Dev: 2.98



Altered Streams



Health Score Distributions:

St. Louis River

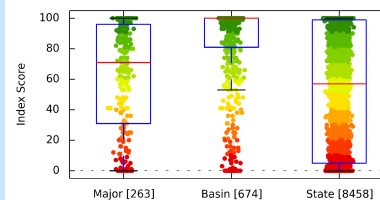
Min: 0

Max: 100

Median: 71.0

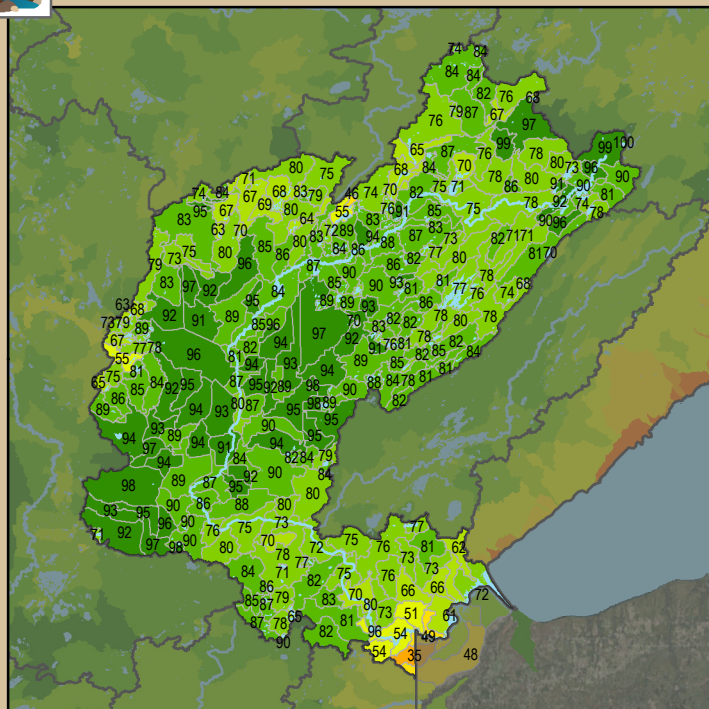
Mean: 62.22

Standard Dev: 35.88



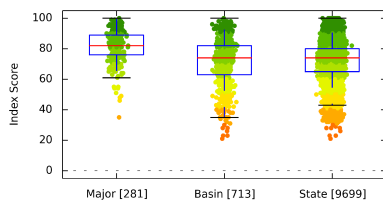


Soil Erosion Potential

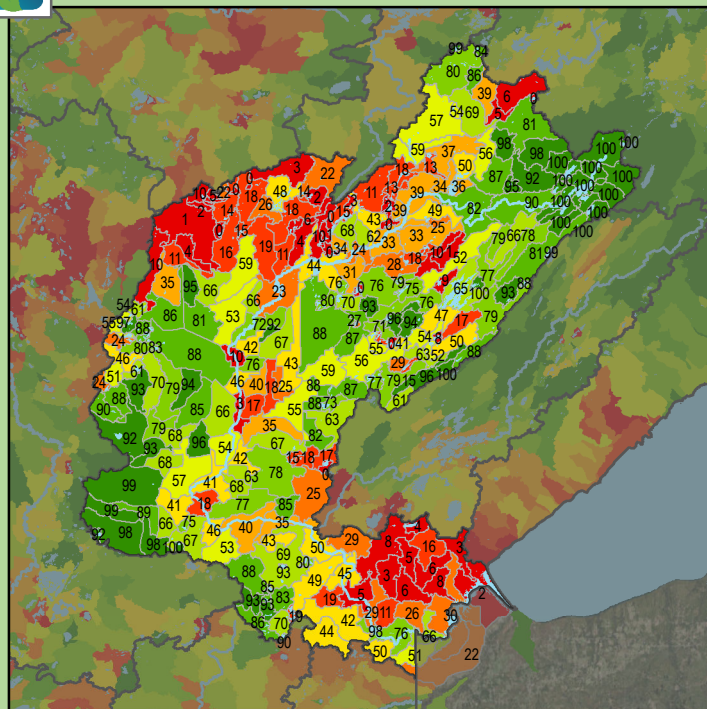


Health Score Distributions:

St. Louis River
Min: 35
Max: 100
Median: 82.0
Mean: 81.54
Standard Dev: 10.52

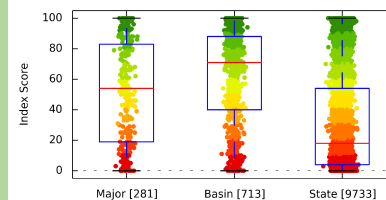


Terrestrial Habitat Quality

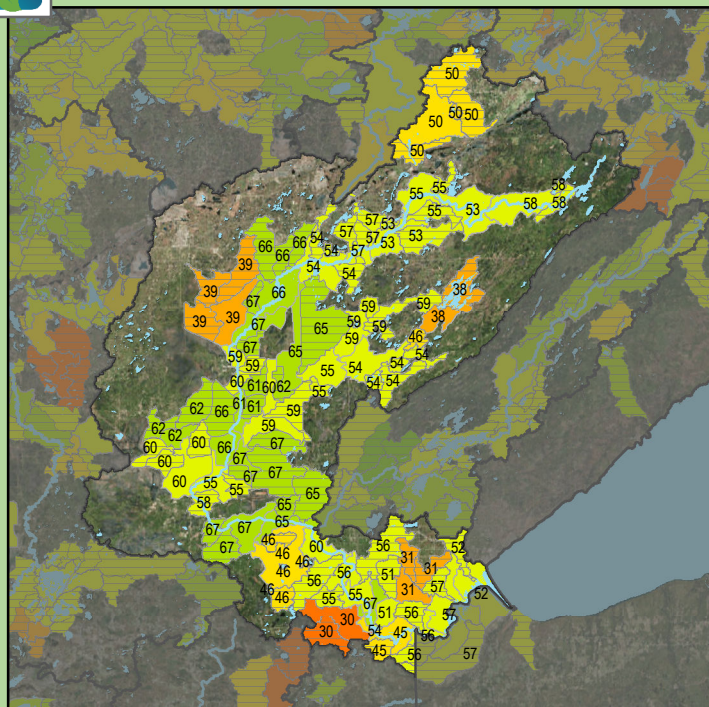


Health Score Distributions:

St. Louis River
Min: 0
Max: 100
Median: 54.0
Mean: 52.41
Standard Dev: 33.27

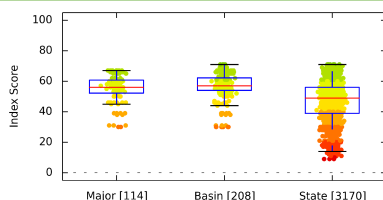


Stream Species Quality - Mussel Score

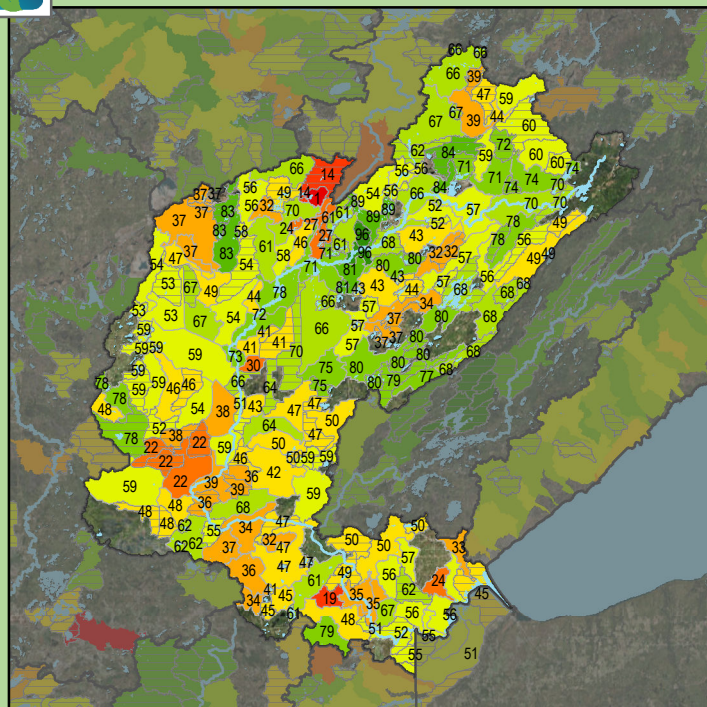


Health Score Distributions:

St. Louis River
Min: 30
Max: 67
Median: 56.0
Mean: 55.32
Standard Dev: 8.9

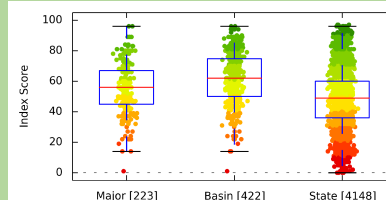


Stream Species Quality - Aquatic Invertebrate IBI



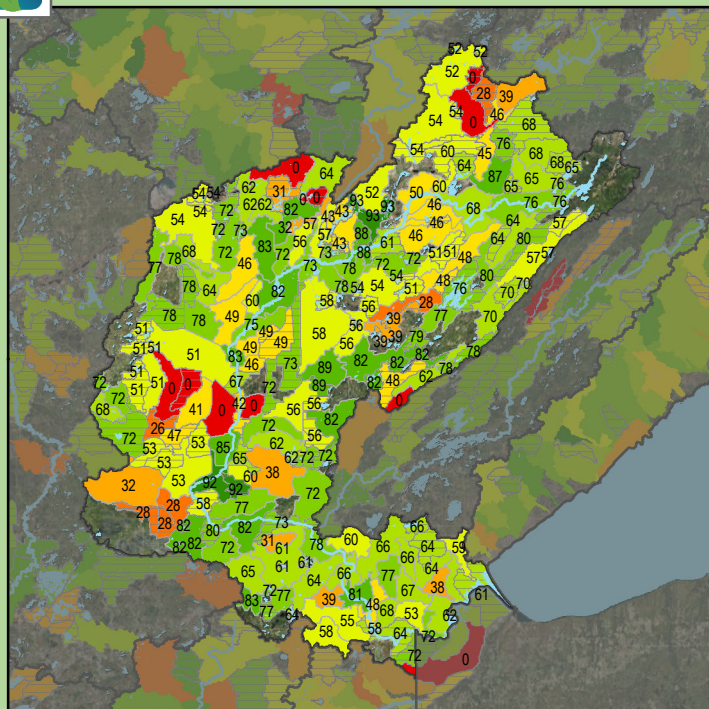
Health Score Distributions:

St. Louis River
Min: 1
Max: 96
Median: 56.0
Mean: 55.39
Standard Dev: 16.62





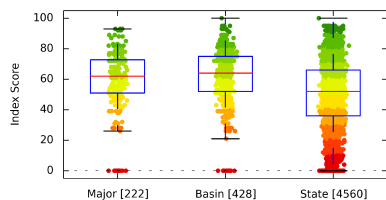
Stream Species Quality - Fish IBI



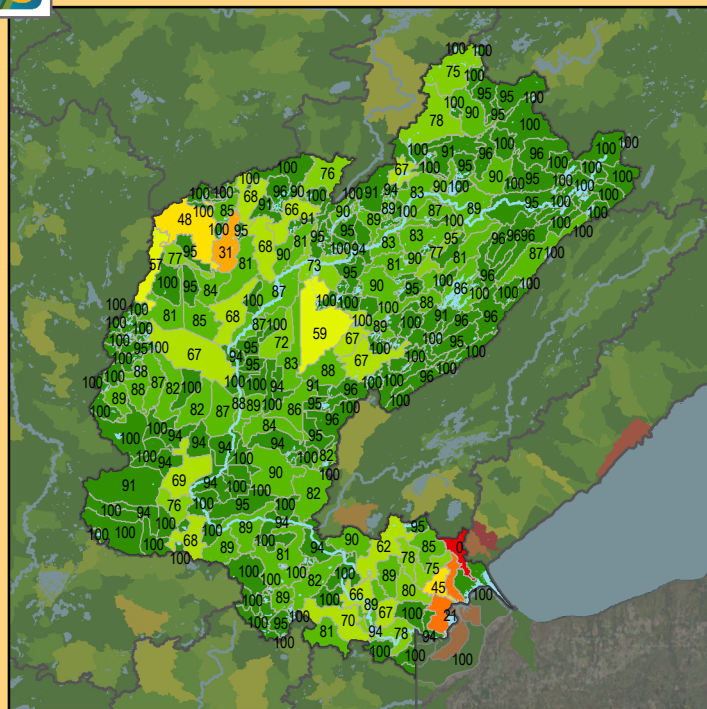
Health Score Distributions:

St. Louis River

Min: 0
Max: 93
Median: 62.0
Mean: 59.35
Standard Dev: 20.0



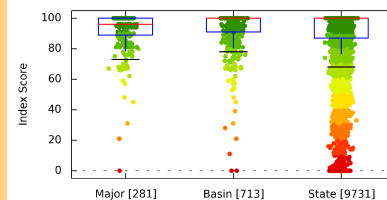
Aquatic Connectivity



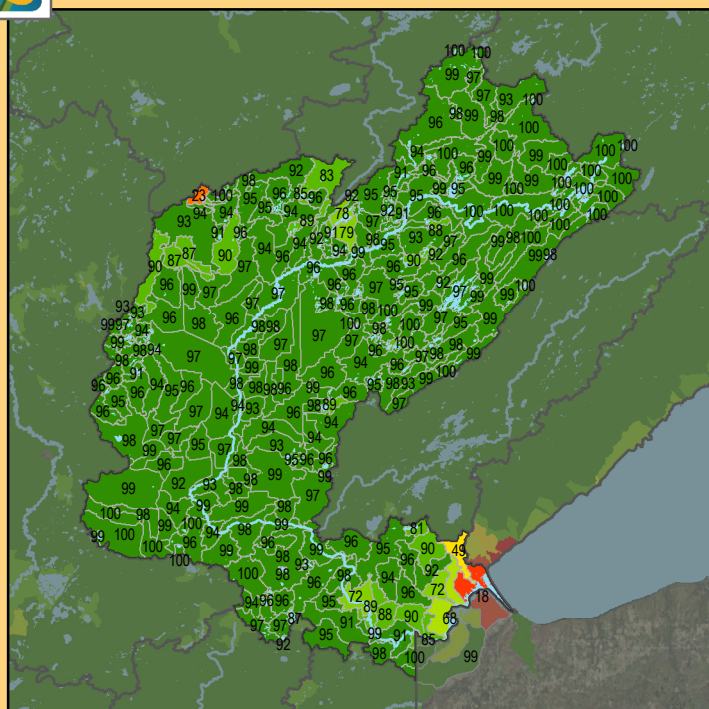
Health Score Distributions:

St. Louis River

Min: 0
Max: 100
Median: 96.0
Mean: 91.94
Standard Dev: 12.91



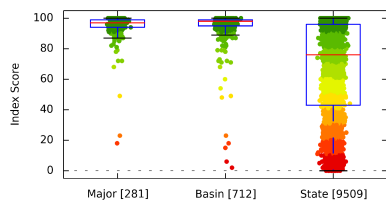
Riparian Connectivity



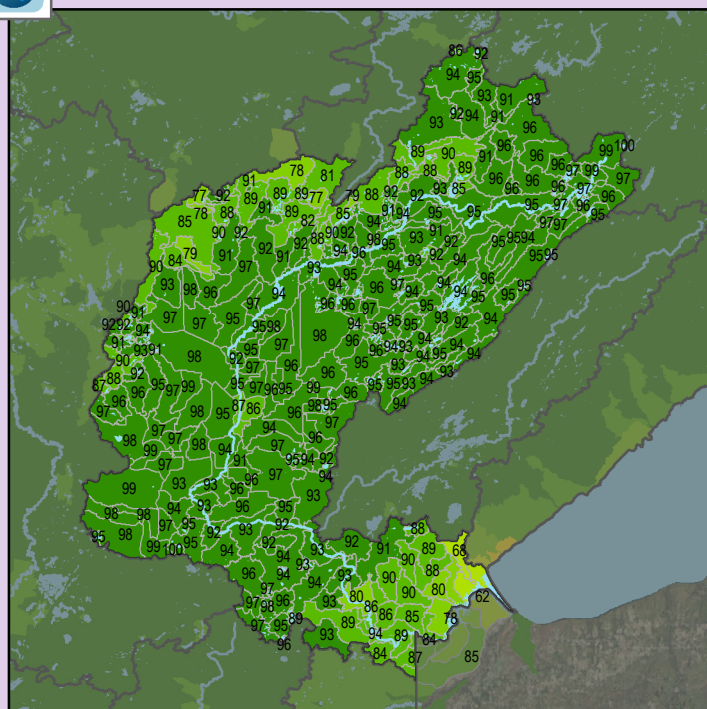
Health Score Distributions:

St. Louis River

Min: 18
Max: 100
Median: 97.0
Mean: 95.0
Standard Dev: 8.3



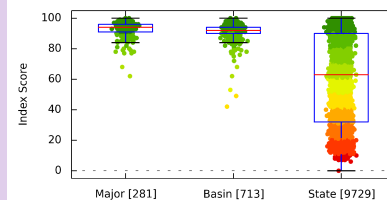
Non-Point Source - Phosphorus Risk



Health Score Distributions:

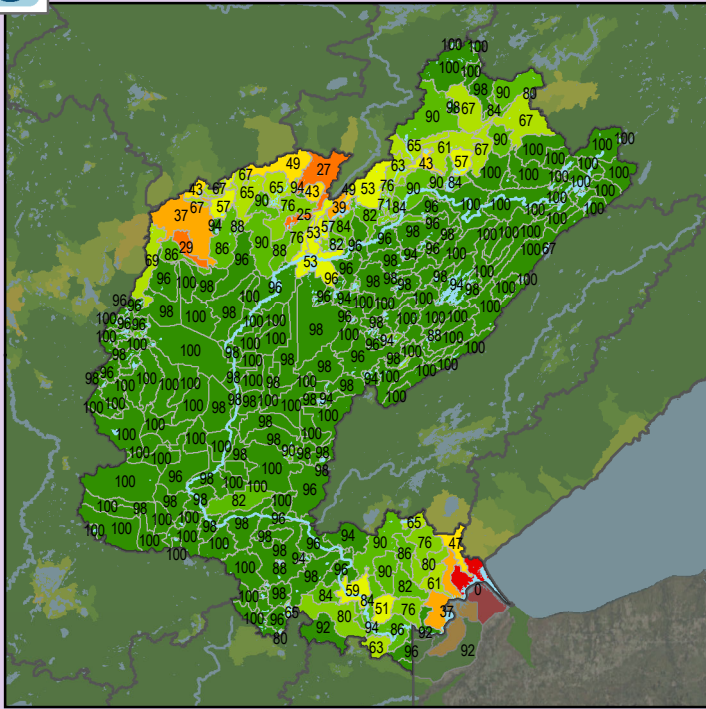
St. Louis River

Min: 62
Max: 100
Median: 94.0
Mean: 92.75
Standard Dev: 4.95



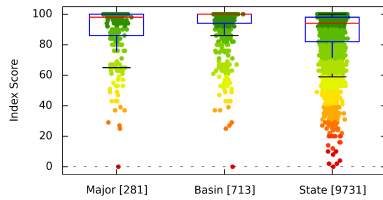


Localized Pollution Sources

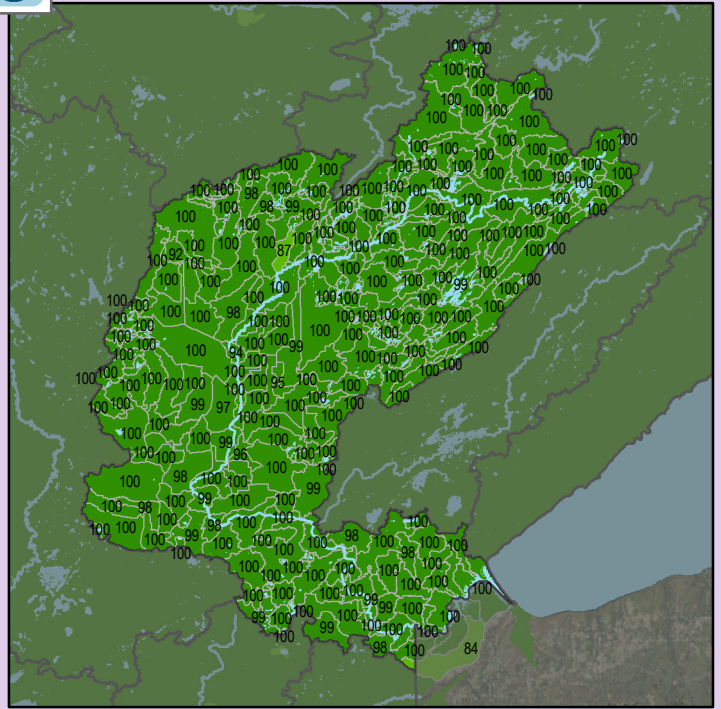


Health Score Distributions:

St. Louis River
Min: 0
Max: 100
Median: 98.0
Mean: 89.2
Standard Dev: 17.07

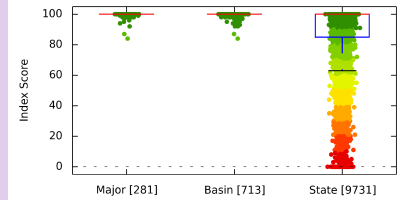


Localized Pollution Sources - Animal Units

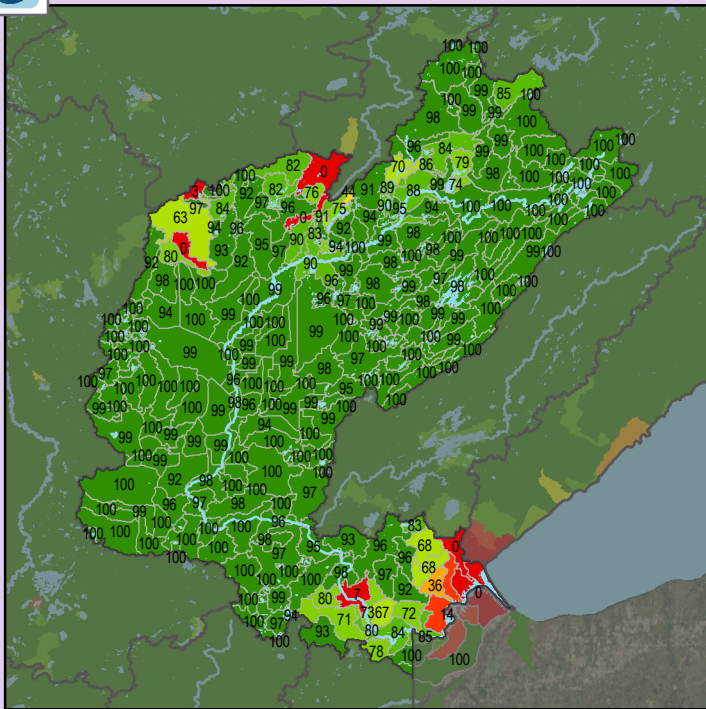


Health Score Distributions:

St. Louis River
Min: 84
Max: 100
Median: 100.0
Mean: 99.7
Standard Dev: 1.46

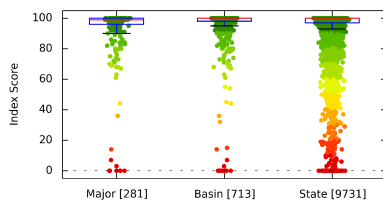


Localized Pollution Sources - Potential Contaminants

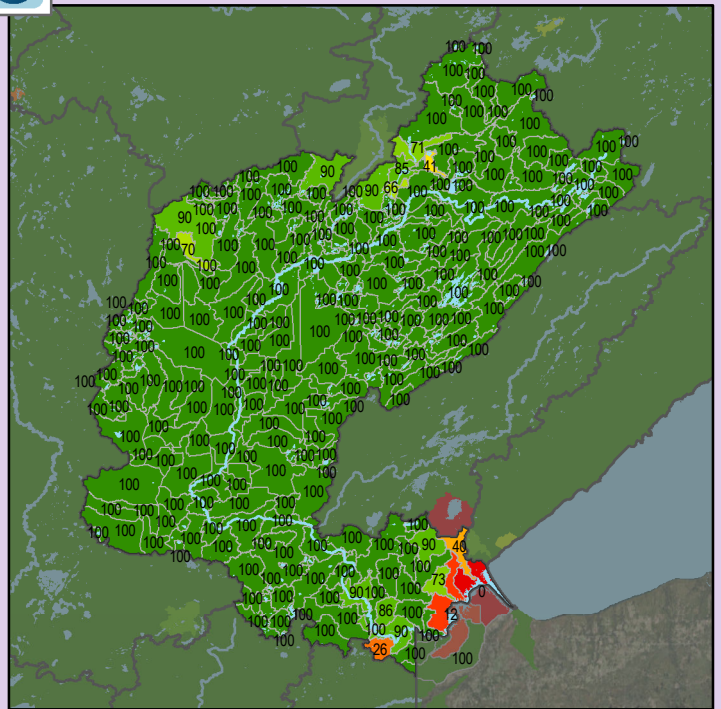


Health Score Distributions:

St. Louis River
Min: 0
Max: 100
Median: 99.0
Mean: 92.97
Standard Dev: 17.77

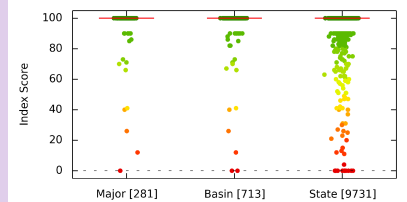


Localized Pollution Sources - Superfund Sites



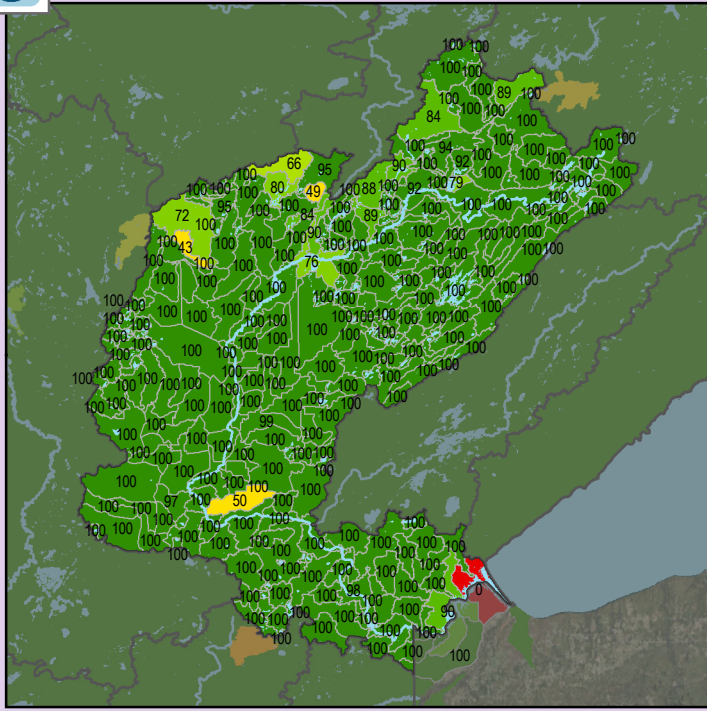
Health Score Distributions:

St. Louis River
Min: 0
Max: 100
Median: 100.0
Mean: 97.9
Standard Dev: 10.95





Localized Pollution Sources - Wastewater Treatment



Health Score Distributions:

St. Louis River

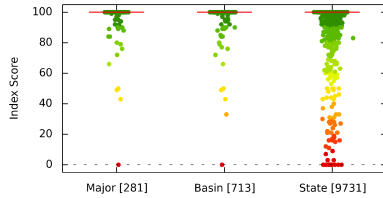
Min: 0

Max: 100

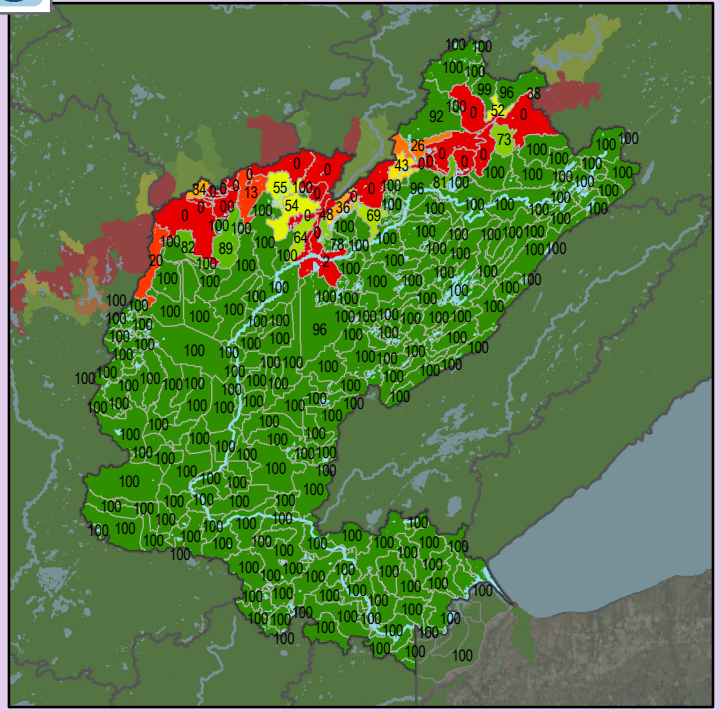
Median: 100.0

Mean: 98.15

Standard Dev: 8.88



Localized Pollution Sources - Open Pit Mines



Health Score Distributions:

St. Louis River

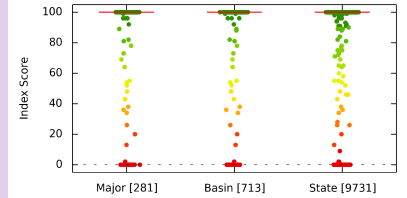
Min: 0

Max: 100

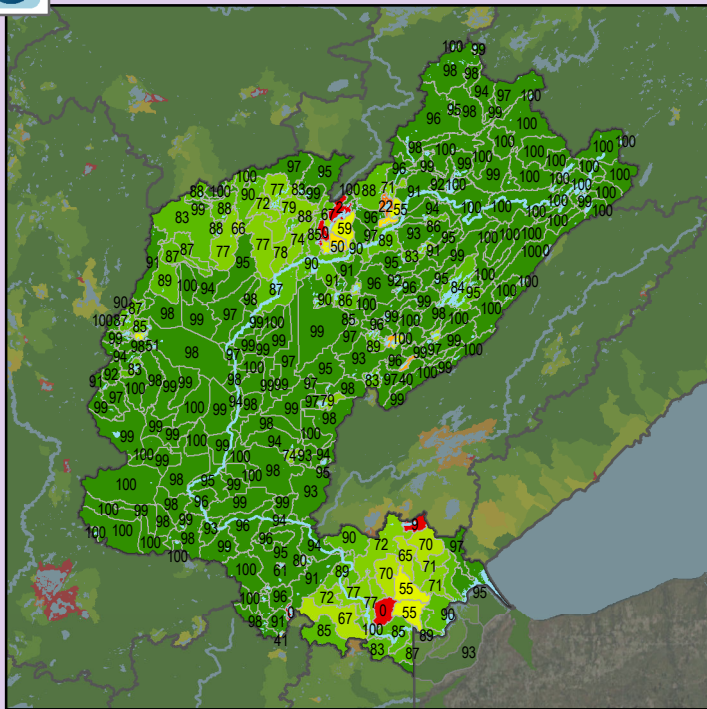
Median: 100.0

Mean: 88.38

Standard Dev: 29.84



Localized Pollution Sources - Septic Systems



Health Score Distributions:

St. Louis River

Min: 0

Max: 100

Median: 97.0

Mean: 89.47

Standard Dev: 18.33

