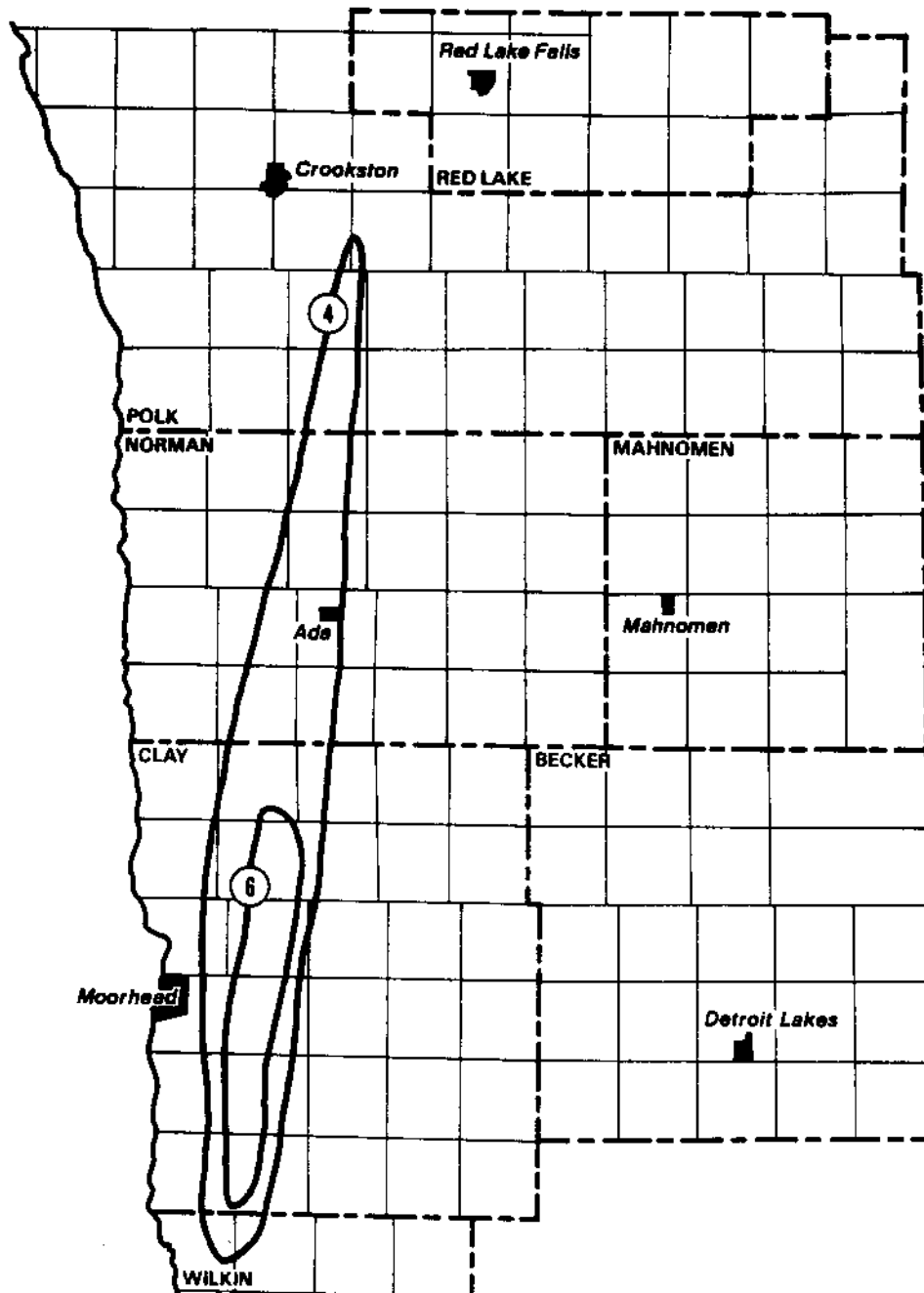
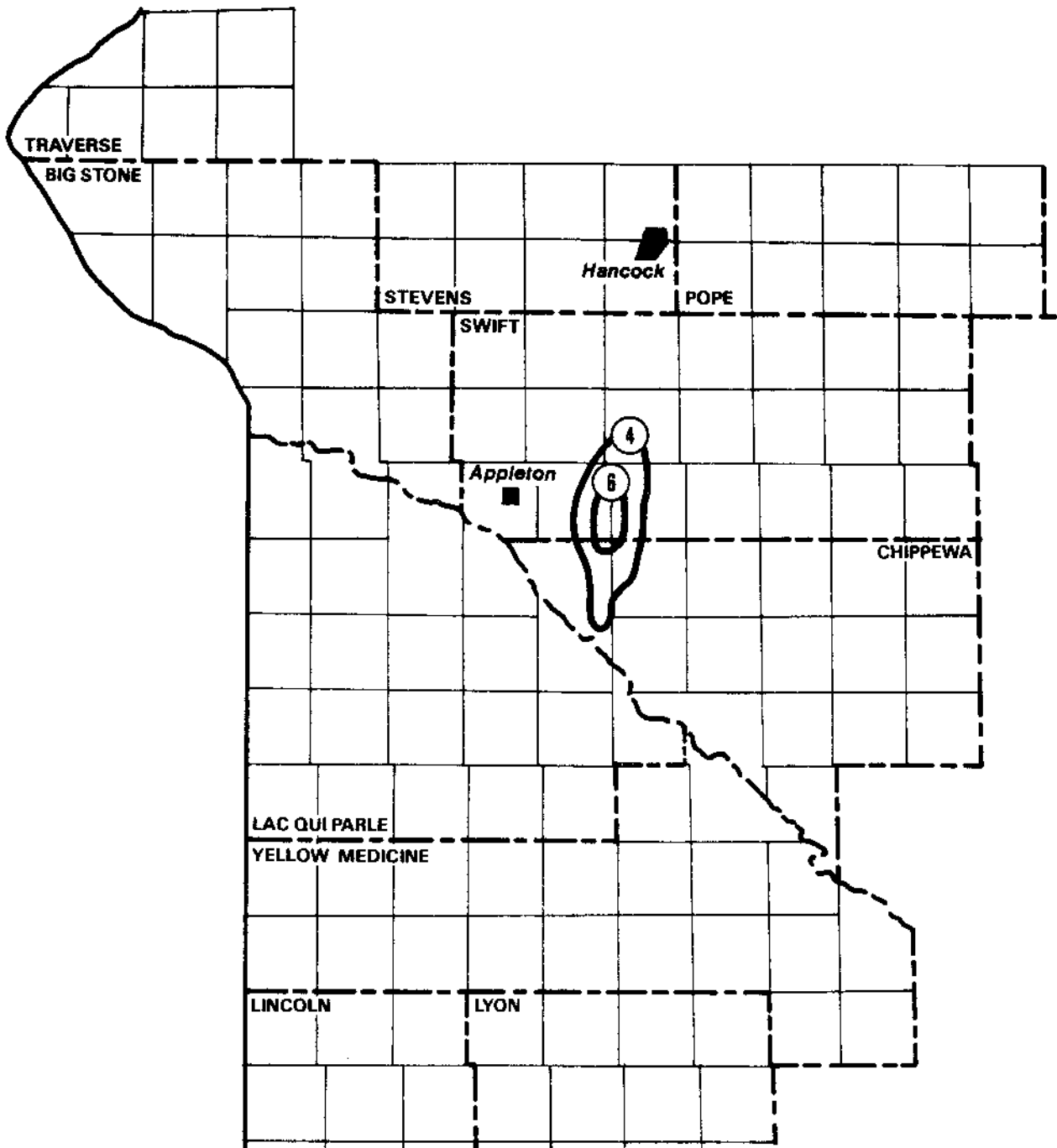


**FLASH FLOOD
(Clay & Norman Counties)
May 22, 1981**



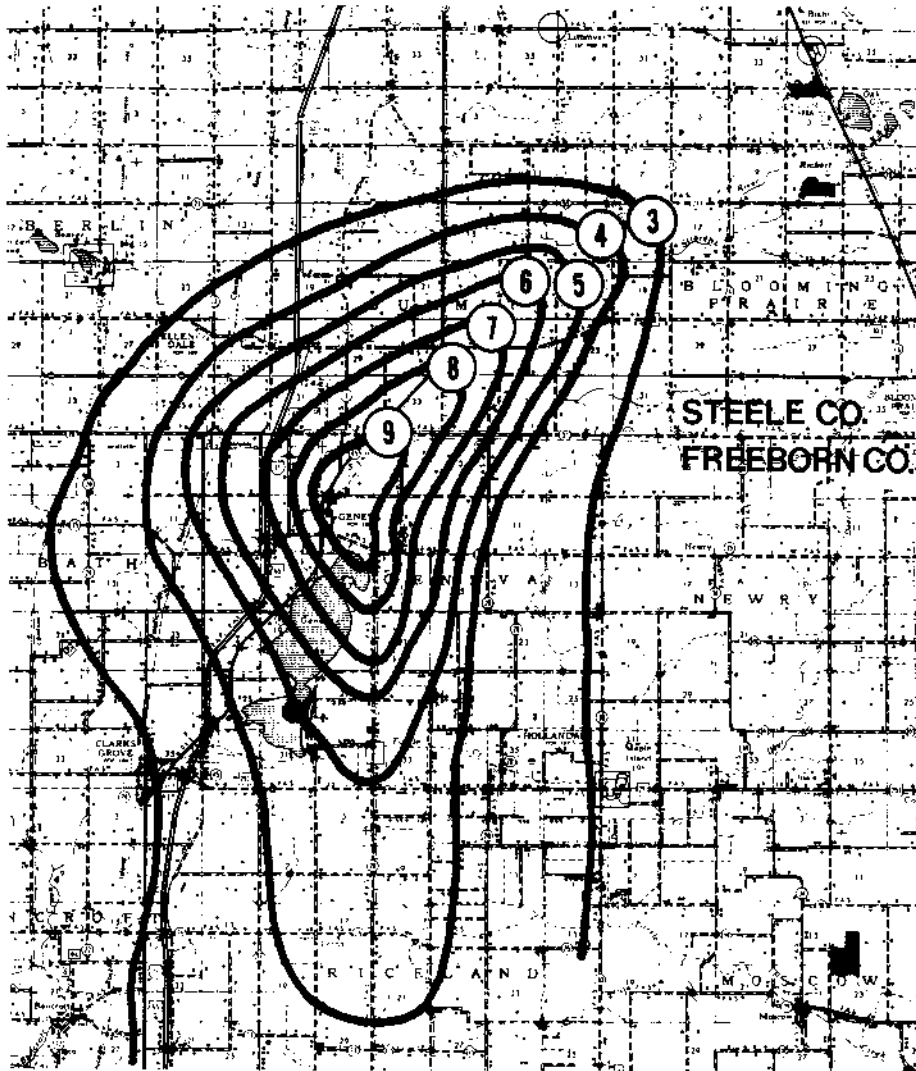
This flash flood in Clay and Norman Counties began about 2 PM on the 22 May 1981, and ended about midnight. The greatest amount reported was 8.59 inches, about 1 mile east of Sabin. The 4-inch and greater area covered 415 square miles and the 6-inch and greater area covered 105 square miles.

**FLASH FLOOD
(Swift & Chippewa Counties)
May 23, 1981**



The flash flood in Chippewa-Swift counties began during the late evening of May 23, 1981 and ended about midnight. The greatest amount reported was 7 inches, 3 miles north of Milan. The 4-inch and greater area covered 50 square miles.

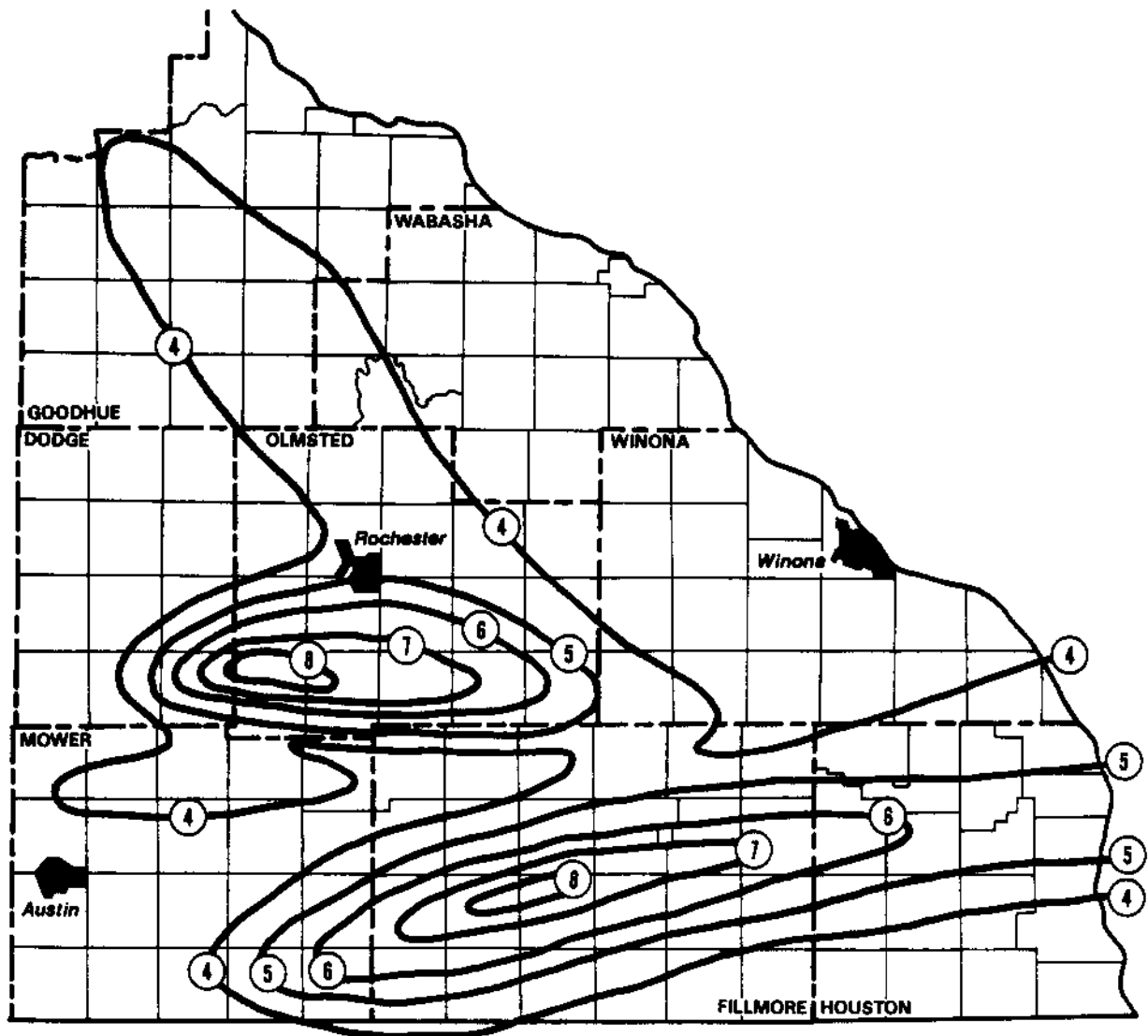
**GENEVA FLASH FLOOD
(Steele & Freeborn Counties)
August 25-26, 1981**



The Geneva flash flood occurred in southern Steele and northern Freeborn Counties. The storm began at 7:30 PM August 25th and ended at 1:00 AM on August 26, 1981. There were 27 reports used in the analysis; the greatest amount was 9.4 inches within the town of Geneva. The flash flood covered a small area but caused considerable crop damage particularly to the potato farmers. This, in part, was do to the wet conditions existing prior to the flash flood. The 4-inch rainfalls covered an area of 60 square miles.

ROCHESTER III & PRESTON FLASH FLOODS

July 11, 1981



The Rochester III flash flood is the third 100-year type storm to occur at Rochester since July 5, 1978. (Six inches or more is considered a 100-year event). The flash flood on July 11, 1981 occurred generally in the southern part of Olmsted County and included the southern part of Rochester. About 6 inches of rain fell between 2 AM and 9 AM LDST. The National Weather Service (NWS) Station at Rochester Airport received a record-breaking 7.47 inches within a 24-hour period. An unofficial 11.04 inches was measured 7 miles west of the airport. The 4-inch or more rainfall area covered about 540 square miles, which was the smallest area of the three storms.

The Preston flash flood is the fourth 100 year-type storm to occur within Fillmore, Houston and southern Winona Counties since July 1, 1978. Preston reported 7.70 inches of rain within a 24-hour period. However, 5.70-inches fell between 3:40 and 6:00 AM LDST. The 4-inch or more rainfall area covered about 1080 square miles within Minnesota. The map was prepared from about 80 reports received from the NWS, DNR-Soil and Water Conservation Districts and the Future Farmers of America.