

ST. LOUIS COUNTY (northern)



Includes fishing piers and shorefishing sites



Public Water Access in Minnesota:

The Minnesota DNR State Parks and Trail's water recreation program provides approximately 1,650 boat accesses, over 365 fishing piers and shore fishing sites and manages 35 designated Water Trails in Minnesota. The DNR, Federal Government and local communities operate boat accesses. See the table on the right for specific site information. **The DNR boating programs are funded by user fees** including boat license & gas tax related to marine use.

Public accesses are usually open 24 hours unless otherwise posted. Most sites have launch ramps but some sites, especially on smaller rivers, are carry in only. Bathrooms and docks are usually located only on the larger and busier sites.

Public Water Access Rules - The launch area must be kept clear and the following activities are unlawful: littering, camping, shooting, building fires, and consuming alcoholic beverages. See Minnesota Rules, chapter 6218 for complete rules.

Boating in Minnesota

The annual **Minnesota Boating Guide** summarizes Minnesota's boating laws and regulations in an easy-to-read form. The guide supplies information about operating watercraft on the state's lakes and rivers. Operator age restrictions apply to operators 17 years old and younger.

Licensing - All motorized and non-motorized watercraft must be licensed by the Department of Natural Resources (DNR). Please contact the DNR License Bureau for information.



Fishing in Minnesota

Fishing Regulations and Licensing - All persons 16 and older are required to have the appropriate license with them when fishing. Licenses are available through the DNR License Bureau, most County Auditors and many stores that sell fishing related goods. Trout fishing requires a trout stamp. For more information call the DNR information Center at (651) 296-6157 or 1-888-646-6367. To purchase a license by phone 24 hours a day, call 1-888-MN-LICENSE (665-4236).

Selective Harvest Fishing - Improved technology and increased fishing have caused the quality of fishing to decline in many waters. Practicing "Selective Harvest" offers anglers an opportunity to take some fish home while releasing others back into the water to improve fishing quality. Here are some tips to use for effective **Selective Harvest fishing**:

- Use barbless hooks
- Play the fish quickly and handle the fish carefully
- Never hold the fish by the eyes
- Use a needle nose pliers to remove hooks or cut the line if it is too deep
- Ease the fish back into the water, do not throw it back.

Safe Boating

Life Jackets - On all boats (except a sailboard) regardless of length there must be a readily accessible Coast Guard approved wearable life jacket for each person on board. In addition, on boats 16 feet or longer, except canoes and kayaks, there must also be at least one Coast Guard approved throwable device, such as a ring buoy or seat cushion.



Boating While Intoxicated (BWI) - Boating while intoxicated is illegal. For persons found to be under the influence there are significant penalties, including fines and possible jail sentences.

Personal Watercraft - Special laws apply including wearing a life jacket and operating at slow no wake speed at certain distances from other watercraft, swimmers and other objects in the water. Operator age restrictions also apply. Consult the Boating Guide for more information. A DNR safety video is available free of charge.

Aquatic Invasive Species (AIS) Laws and Requirements:

The DNR lists lakes and rivers as "infested" with certain aquatic invasive species.

If you are harvesting bait, commercial fishing, or diverting or taking water, you might need to follow special regulations in infested waters.

To identify an infested water, look for orange Invasive Species Alert signs at the access. You can also use LakeFinder to find out if a particular lake is listed as infested: mndnr.gov/lakefind. For more information about infested waters, including an up-to-date infested waters list and additional location information, visit mndnr.gov/invasives.

Before leaving the water access or shoreline property, you MUST:

- Clean** off ALL aquatic plants and animals
- Drain** all water including bilge, livewells, baitwells, bait buckets, motor and ballast tanks
- Pull** the plug and leave it out

Get into the habit of taking these three simple steps, and it will soon become part of your routine. Pull away from the boat ramp area. Check for and remove plants while strapping the boat down. Pull the plug when adjusting the motor. If you have other people (especially kids) with you, have them help! Adding a few minutes will help safeguard our waters.

Cleaning water-related equipment is just as important as cleaning boats, so while you're cleaning your boat, please remember to also:

- Clean anchors, ropes, fishing tackle, and other objects that were in the water. Many species can be transported in the mud or in fishing lines and rope
- Dump water out of canoes, kayaks, and other watercraft before leaving

These are YOUR waters and it is YOUR responsibility to inspect, clean, and drain your boats!

AIS Bait Laws

It is illegal to transport lake and river water. To save your bait (minnows or leeches), the DNR recommends bringing "fish safe", treated water from home and keeping it in your vehicle or cooler. Bringing ice can be a good idea on warm days to cool down the water.

DO NOT dump unwanted bait into water bodies or on the shoreline! Unwanted bait belongs in the trash or a designated compost bin. Unwanted worms must be disposed of in the trash.



Working Together to Protect the Waters

Watercraft Inspectors are here to ensure watercraft and equipment are "clean in, clean out!" If you need assistance, have questions about the laws, or are curious about the program, please ask!

Ways you can help the Watercraft Inspectors:

- Please clean your boat and pull your plug as soon as you are safely able to. That way when the inspector comes, the inspection process will move quickly
- If there is a Decontamination Unit present, please follow all the instructions given by the inspectors, for your safety and theirs. There will be plenty of time to ask questions and watch them work from a safe distance

Ways the Watercraft Inspectors can help you:

- The inspectors have tools, wrenches and pliers, so if you are having trouble with your plug, ask!
- If there are weeds that are hard to reach, inspectors can also help pull weeds off boats or other such tanks. They also have grabbing tools for plants

When you see the Watercraft Inspectors, please be cooperative. The law requires compliance with inspectors, and it will help everyone to be on their way in a timely and pleasant manner.

Public Water Accesses in northern St. Louis County

Water Body Name	Map Grid Location	Ramp Type	Fish Species	Administrator	Water Body Name	Map Grid Location	Ramp Type	Fish Species	Administrator	
† Agassa Lake	E6	carry in	N / A	USFS	Low Lake	E6	concrete	C,LB,N,S,SW,W	DNR	
†† Angletworm Lake	E6	carry in	N,W	USFS	† Maude Lake	D4	carry in	N,W	USFS	
Ash Lake	D1	concrete	C,N,S,SB,W	DNR	Meander Lake	D5	carry in	S,SB	USFS	
Ash River	B2	concrete	Various	DNR	†† Moose River (N)	D5	carry in	various	USFS	
Astrid Lake	D4	carry in	N,W	USFS	† Moose River (S)	E5	carry in	various	USFS	
Ban Lake	E3	concrete	C,N,W	DNR	Myrtle Lake	E3	concrete	C,N,S,W	DNR	
† Big Lake	E6	concrete	N,S,SB,W	USFS	Nels Lake	E6	gravel	N,W	USFS	
Blackduck Lake	D2	concrete	LB,N,S,W	DNR	† Pauline Lake	D4	carry in	N,S	USFS	
Burntside Lake	E6	concrete	N,S,W	USFS	Pelican Lake	West	E1	gravel	C,LB,N,S,W	County
Crane Lake (W)	C3	concrete	C,N,W	County		Saunders	E2	earth	C,LB,N,S,W	County
Crane Lake (E)	C3	concrete	C,N,W	DNR		Co. 516	E2	concrete	C,LB,N,S,W	City
Crane Lake (Waters Edge)	C3	concrete	C,N,W	DNR		Orr	E2	gravel	C,LB,N,S,W	County
Echo Lake	D3	gravel	N,W	USFS		Orr	E2	fishing pier	C,LB,N,S,W	City
Ed Shave Lake	E6	concrete	N,W,B	DNR	NE	E2	gravel	C,LB,N,S,W	County	
Elbow Lake (N)	E3	gravel	C,LB,N,S,SB,W	DNR	Co. 515	E2	gravel	C,LB,N,S,W	County	
Elbow Lake (S)	E3	concrete	C,LB,N,S,SB,W	County	Pelican River	D2	carry in	Various	USFS	
Elephant Lake	D2	carry in	C,N,S,SB,W	USFS	Pelican River	D3	carry in	Various	DNR	
Elephant Lake	D2	concrete	C,N,S,SB,W	DNR	Pelican River	D2	gravel	Various	County	
Everett Lake	E6	carry in	N,W	USFS	† Picket Lake / Mudro Lake	E6	carry in	N,S,SB,W	USFS	
Fenske Lake	E6	gravel	C,LB,N,S,SB,W	USFS	†† Slim Lake	E6	carry in	W	USFS	
† Franklin Lake	C3	carry in	N,W	USFS	Stuart River	D6	carry in	N,W	USFS	
Grassy Lake	E6	carry in	C,LB,N,SB,S	USFS	Susan Lake	D2	carry in	C,N,S	DNR	
Hanson Lake	E6	carry in	ST	DNR	Two Mile Creek	E3	carry in	Various	DNR	
Jeanette Lake	D4	concrete	N,W	USFS	Vermilion River	Co. 491	C3	carry in	Various	USFS
Johnson Lake	C3	carry in	N,W	USFS		Holmes Creek	C3	carry in	Various	DNR
Kabetogama Lake (N)	B1	gravel	N,W	County		Buyuck	D3	earth	Various	DNR
Kabetogama Lake (NE)	B1	concrete	N,W	DNR		Co. 24	D3	carry in	Various	DNR
Kabetogama Lake (SW)	B1	concrete	N,W	DNR / NPS		Eightmile Creek	E3	carry in	Various	County
Kabetogama Lake (E)	B2	concrete	N,W	NPS	Winchester Lake	E3	carry in	S	DNR	
Little Indian Sioux River	D5	carry in	various	USFS						

Administrator: DNR - MN Dept. of Natural Resources
 MN DOT - MN Dept. of Transportation
 USFS - U.S. Forest Service
 NPS - National Park Service

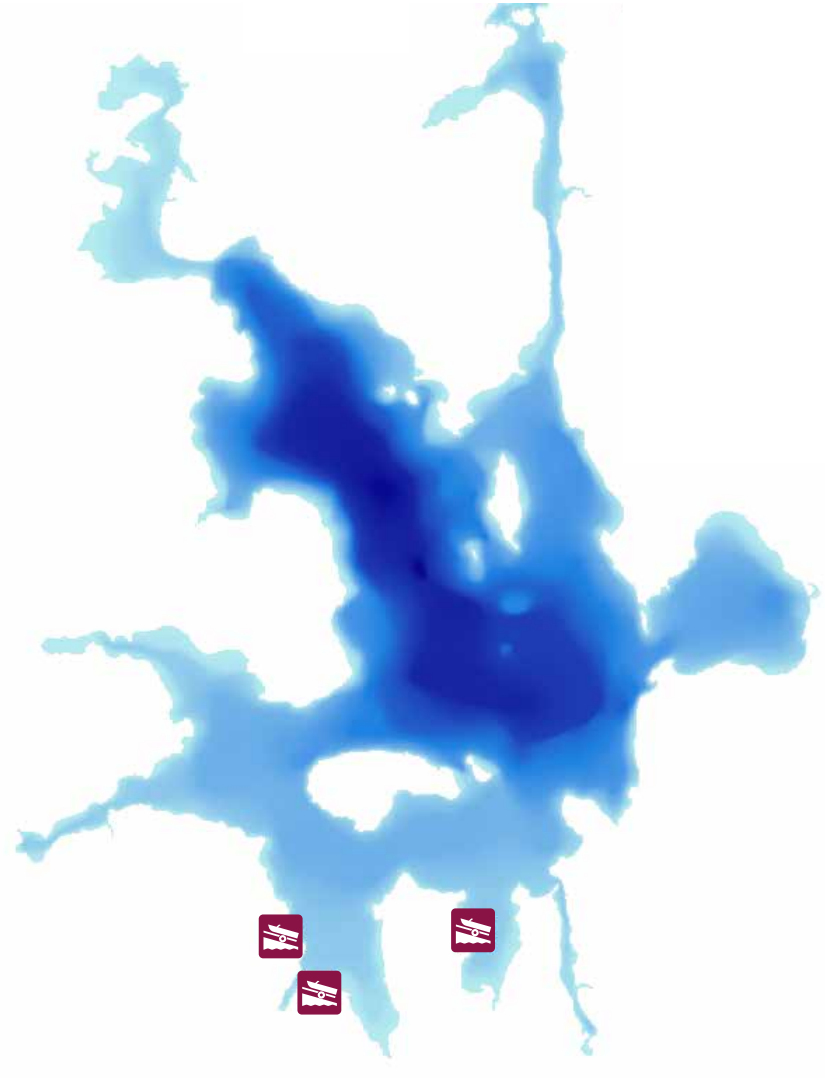
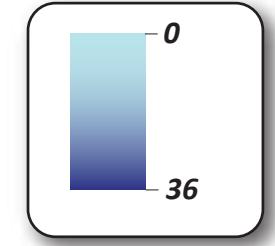
Fish Species: C — Crappie, CF — Catfish, LB — Largemouth Bass,
 N — Northern Pike, S — Sunfish, SB — Smallmouth Bass,
 W — Walleye, N / A — Not Available

† Portage over 100 yards
 †† **BWCA Entry Point.** Special permits and regulations apply. For further information contact:
 U.S.F.S. Superior National Forest
 8901 Grand Avenue Place
 Duluth, MN 55808
 (218) 626-4300
 Metro Area Federal Information Center
 (612) 349-5333

Waters with Invasive Species

Crane Lake

Depth in Feet



Photos: Minnesota Department of Natural Resources, unless otherwise noted. Persons with disabilities may request this information in an alternative format.



© Take Me Fishing