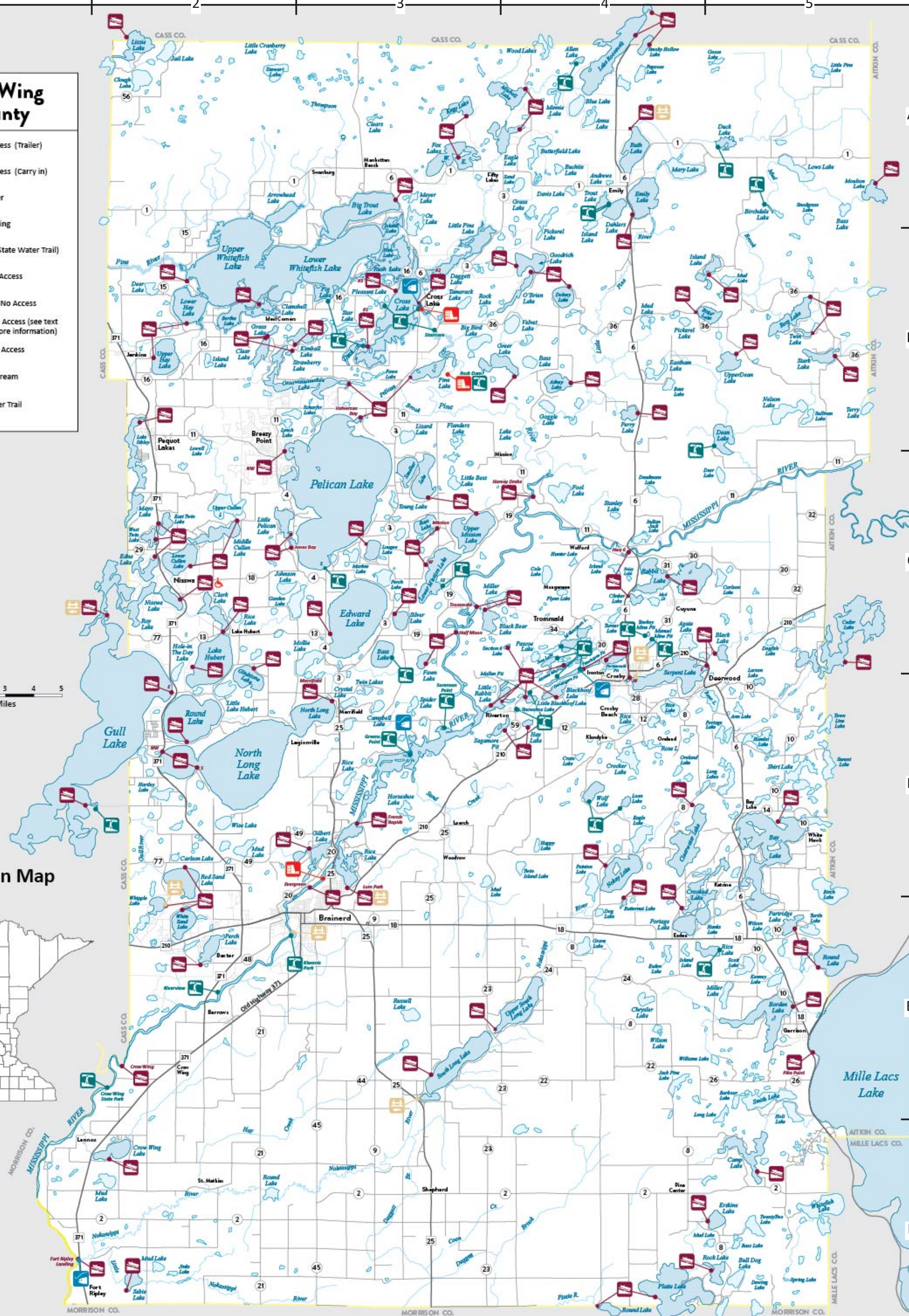


# Crow Wing County

- Water Access (Trailer)
- Water Access (Carry in)
- Fishing Pier
- Shore Fishing
- Dam (on State Water Trail)
- Lake with Access
- Lake With No Access
- Accessible Access (see text side for more information)
- River with Access
- River or Stream
- State Water Trail

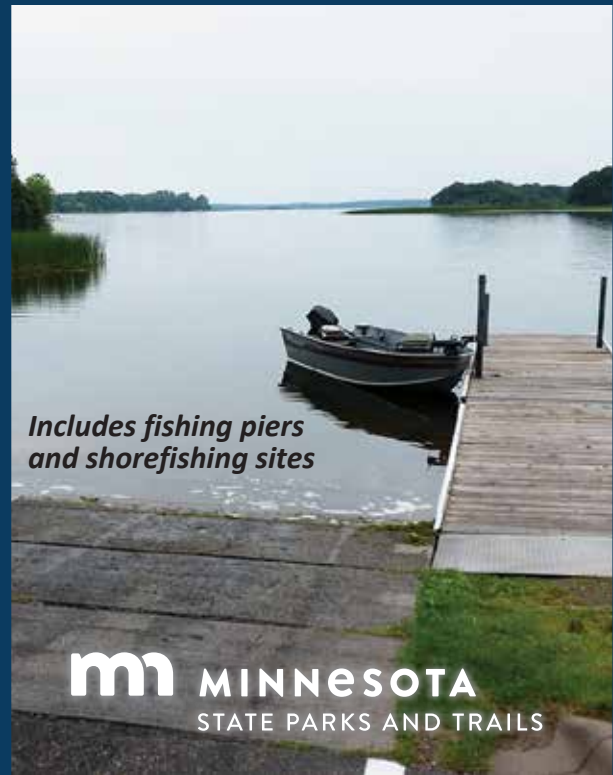
0 1 2 3 4 5  
Scale in Miles

## Location Map





CROW WING COUNTY



Produced under a grant from the Sport Fish Restoration and Boating Trust Fund, administered by the U.S. Coast Guard.

Photos: Minnesota Department of Natural Resources, unless otherwise noted.

Persons with disabilities may request this information in an alternative format.



Minnesota State Parks and Trails-Grand Rapids  
(218) 999-7923

The DNR Information Center  
The DNR's Information Center is available to provide free publications of facilities and services as well as answers questions pertaining to DNR recreational opportunities in Minnesota.

500 Lafayette Road,  
St. Paul, MN 55155-4040  
651-296-6157 (local) or 1-888-MINNDNR

mndnr.gov

Public Water Access in Minnesota:

Minnesota has approximately 3,000 public water access sites, 375 fishing piers and shore fishing sites and 35 state water trails. The Minnesota Department of Natural Resources (DNR), federal agencies and local government units share in the ownership and operation of these facilities.

DNR public water access sites are usually open 24 hours a day however, access sites owned by others may have different hours and rules. Most trailer access sites have concrete launch ramps and are designed for launching watercraft up to 18 ft. in length. There are some boat ramps that can handle larger boats. There are typically no launch fees unless the access is located within a park requiring a vehicle permit.

The following activities are unlawful at public water access sites: littering, camping, overnight mooring, shooting/hunting, fires, storage of watercraft, vehicles, or equipment of any kind, and consuming alcoholic beverages. See Minnesota Rules, chapter 6218 for complete rules.

Boating Access Etiquette

Keep the launch ramp area clear unless actively launching or loading. The line to launch/load is formed by the vehicles and trailers on land (not by the order of the boats in the water or at the dock). Conditions will vary from site to site and with the changing seasons so boaters should check the condition of the ramp and depth of water before each use.

Boating Laws

Enjoying Minnesota’s lakes and rivers by paddle or motorboat is a wonderful privilege which comes with serious responsibilities. The Minnesota Boating Guide summarizes Minnesota’s boating laws and regulations in an easy-to-read form. The waterbody you are using may also be subject to federal and local rules and restrictions. For a copy of the Boating Guide contact the DNR Information Center, 651-296-6157 or 888-646-6367 Email: info.dnr@state.mn.us

All motorized watercraft regardless of length and nonmotorized watercraft over 10 feet must be licensed and pay the registration fee (exceptions may apply).

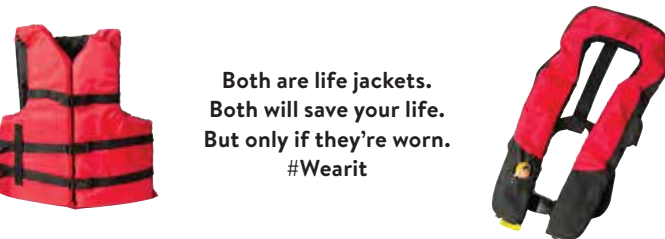
Own Your Wake

Under Minnesota law, the damage your boat wake causes is treated the same as damage caused by an actual collision. Respect others so everyone can enjoy their time on the water.

- ☒ Stay more than 200 feet away from shorelines, docks, swimmers, and watercraft. Boats that create an artificial wake require even more distance to lower the impact.
- ☒ Minimize repetitive passes.
- ☒ Keep the noise down and be courteous to other boaters.

Top Boating Safety Tips

- ☒ Wear your life jacket —ensure children less than 10 years old always wear theirs.
- ☒ Stay sober—Alcohol is the #1 factor in boating fatalities.
- ☒ Share your Float Plan—Tell someone where you’re going and when you will be back. If you’re not back, they should call 911.
- ☒ Know your boat - stay alert while operating, scan for dangers; stay seated and low in the boat to prevent falls overboard.



Fishing Information

Most persons 16 to 89 are required to have the appropriate license with them when fishing (exception may apply). Licenses are available online and at many stores that sell fishing related goods. To purchase a license by phone 24 hours a day, call 1-MN-LICENSE (888-665-4236) or go to mndnr.gov/buyalicense.

Season dates and bag limits can vary from lake to lake. Size restrictions may exist and fishing in a particular lake could be closed or limited. Check the Special Regulations and the Minnesota Fishing Regulations for more information or online at mndnr.gov/fishing.

Do Your Part to Protect Minnesota Waters

Aquatic Invasive Species (AIS)

AIS are non-native plants, animals, and diseases that harm fish populations, water quality and water recreation. Most boaters and anglers take action to prevent the spread of invasive species and protect Minnesota waters. To find out if a water body contains an AIS, visit mndnr.gov/lakefinder, visit mndnr.gov/infested, or look for an “Invasive Species Alert” sign at the public water access.

Watercraft Inspectors are Here to Help

Inspectors will inform you about AIS and will physically inspect your boat, trailer, other water-related equipment, and compartments that hold water. Be prepared:

When entering:

- ☒ Arrive cleaned and drained. Open the lids of closed compartments that could hold water, like live wells, so the inspector can see they are drained.



When exiting:

- ☒ Pull all drain plugs. Clean off any plants, mud and invasive animals.

Tell us how we are doing by emailing: wip.dnr@state.mn.us

Take Action

Before leaving the access or shoreland, you must:

- ☒ Clean your boat, trailer and gear to remove plants and prohibited invasive species.
- ☒ Drain all water and leave plugs out during transport.
- ☒ Dispose of unwanted bait in the trash.
- ☒ To Keep leftover live baitfish: (1) bring extra bottled or dechlorinated tap water with you and (2) on shore before leaving, drain your bait container and refill it with the extra water.

Take these additional steps to reduce the risk of spreading AIS whenever possible:

- ☒ Decontaminate your equipment – find free stations at mndnr.gov/decon
- ☒ Spray your equipment with high-pressure water or rinse it with very hot water (120 degrees for at least two minutes or 140 degrees for at least 10 seconds).
- ☒ Dry your boat and gear for five days before using in another water body.

Know the Laws

- ☒ You may not transport aquatic plants or prohibited invasive species, dead or alive.
- ☒ You may not launch watercraft or place a trailer in the water if it has aquatic plants, zebra mussels or other prohibited invasive species attached or water present in compartments.
- ☒ You must drain all water, remove the drain plug(s) and leave all water-draining devices open when transporting watercraft, gear and equipment.
- ☒ You may not release bait or non-native species into Minnesota waters.
- ☒ You may need a permit to harvest bait or transport water from an infested water body.

mndnr.gov/AIS

Water Body Name	Map Grid Location	Ramp Type	Fish Species	Administrator
Adney Lake	B4	concrete	C,LB,N,S	DNR
Allen Lake	A4	carry in	ST	DNR
Alstead Mine Lake	C4	earth	Unknown	DNR
Bass Lake (Mission)	C3	carry in	C,LB,N,S,W	DNR
Bass Lake (Turkey)	C3	concrete	C,LB,N,S	DNR
Bay Lake	D5	concrete	C,LB,N,S,W	DNR
Big Trout Lake	A3	concrete	C,LB,N,S,W	USCOE
Birchdale Lake	A5	carry in	N / A	DNR
Black Lake	C5	earth	C,LB,N,S	County
Black Bear Lake	C3	concrete	C,N,S,W	DNR
Blackhoof Lake	D4	concrete	C,LB,N,S	DNR
Borden Lake	E5	concrete	C,LB,N,S,W	DNR
Butternut Lake	E4	earth	L,LB,N,S,W	County
Camp Lake	F5	concrete	C,LB,N,S	DNR
Clamshell Lake	B2	concrete	C,LB,N,S,W	USCOE
Clark Lake	C2	concrete	LB,N,S	DNR
Clear Lake	B2	concrete	LB,N,S,W	DNR
Clearwater Lake	D4	concrete	C,LB,N,S,SB,W	DNR
Clinker Lake	C4	concrete	C,LB,N	DNR
Crooked Lake	E4	concrete	C,LB,N,S,W	DNR
Cross Lake #1	B3	concrete	C,LB,N,S,W	DNR
Cross Lake #2	B3	concrete	C,LB,N,S,W	USCOE
Cross Lake #3	B3	earth	C,LB,N,S,W	DNR
Crow Wing Lake	F2	concrete	C,N,S,W	DNR
Dahler Lake	A4	carry in	LB,N,S	City
Dean Lake	C3	carry in	C,LB,N,S,W	DNR
Dolney Lake	B4	concrete	C,LB,N,S	DNR
Duck Lake	B3	carry in	N,S	DNR
Duck Lake	A5	carry in	N / A	DNR
Eagle Lake	A4	concrete	C,LB,N,S,SB,W	DNR
East Fox Lake	A3	concrete	C,LB,N,S,W	DNR
East Twin Lake	C2	concrete	C,LB,N,S	DNR
Edna Lake	C2	concrete	C,LB,N,S,W	DNR
Edward Lake	C3	concrete	C,LB,N,S,W	DNR
Emily Lake	A4	concrete	C,N,S,W	DNR
Erskine Lake	F5	concrete	C,LB,N,S	DNR
Fawn Lake	C3	concrete	C,LB,N,S	County
Gilbert Lake	D3	concrete	C,LB,N,S,W	County
Gladstone Lake	C2	concrete	C,LB,N,S	DNR
Goodrich Lake	B4	concrete	C,LB,N,S	DNR
Grass Lake	B2	earth	C,LB,N,S,SB	DNR
Greer Lake	B4	concrete	C,LB,N,S	DNR
Gull Lake (East)	D2	concrete	C,LB,N,S,W	DNR
Hay Lake	D4	earth	C,LB,N,S	DNR
Hubert Lake	C2	concrete	C,LB,N,S,SB,W	DNR
Huntington Pit	D4	carry in	ST	DNR
Huntington Pit	C4	carry in	ST	DNR
Island Lake	B5	concrete	C,N,S,W	DNR
June Lake	C4	carry in	C,LB,N,S,W	DNR
Kego Lake	A3	concrete	C,LB,N,S	DNR
Kimball Lake	B2	concrete	C,LB,N,S,W	DNR
Little Blackhoof Lake	D4	earth	C,LB,N,S	DNR
Little Pelican Lake	C2	concrete	C,LB,N,S,W	DNR
Little Rabbit Lake	D3	concrete	C,LB,N,S	Township
Little Rabbit Lake / Rowe Rd.	D4	concrete	C,LB,N,S	County
Loon Lake	D4	carry in	C,LB,N,S	County
Lougee Lake	C3	concrete	C,LB,N,S	DNR
Lower Cullen Lake	C2	concrete	C,LB,N,S,W	DNR
Lower Hay Lake	B2	concrete	C,LB,N,S,W	DNR
Lower Mission Lake (W)	C3	concrete	C,LB,N,S,W	DNR
Lower Mission Lake (SE)	C3	carry in	C,LB,N,S,W	DNR
Mahnomen Pit	C4	concrete	C,LB,N,S,W	DNR
Mahnomen Pit #1	C4	carry in	C,LB,N,S,W	DNR
Mallen Pit	C4	carry in	LB,N,S,ST	County
Manuel Pit	C4	carry in	ST	DNR
Middle Cullen Lake	C2	concrete	C,LB,N,S,W	DNR
Millie Lacs Lake	E5	concrete	C,M,N,S,SB,W	MN DOT
Millie Lacs Lake (Pike Pt.)	E5	concrete	C,M,N,S,SB,W	DNR
Half Moon	C3	concrete	Various	DNR
Trommald	C3	concrete	Various	DNR
Hwy 6	C4	concrete	Various	DNR
French Rapids	D3	concrete	Various	County
Evergreen	D3	concrete	Various	City
Kiwanis Park	E2	carry in	Various	City
Kiwanis Park	E2	fishing pier	Various	DNR
Crow Wing*	E2	concrete	Various	DNR
Crow Wing SPK*	E2	carry in	Various	DNR
Riverview	E2	carry in	Various	City
Fort Ripley Landing	F1	concrete	Various	DNR
Mississippi River	F1	shorefishing	Various	DNR
Green's Point	D3	carry in	Various	DNR
Green's Point	D3	shorefishing	Various	DNR
Sorenson Point	D3	carry-in	Various	County
Mitchell Lake	A4	concrete	C,N,S,SB,W	DNR
Nisswa Lake	C2	concrete	C,LB,N,S,W	DNR
Nokay Lake	D4	concrete	C,LB,N,S,W	DNR

Crow Wing County					
Water Body Name		Map Grid Location	Ramp Type	Fish Species	Administrator
North Long Lake	Merrifield	D3	concrete	C,LB,N,S,W	DNR
	NW	D2	concrete	C,LB,N,S,W	DNR
	S	D2	gravel	C,LB,N,S,W	County
	O'Brien Lake	B4	concrete	C,LB,N,S,W	DNR
	Ossawinnamakee Lake	B3	concrete	C,LB,N,S,W	DNR
	Partridge Lake	E5	earth	C,LB,N,S	City
Pelican Lake	North (Halverson Bay)	B3	concrete	C,LB,N,S,W	DNR
	West (Jones Bay)	C2	concrete	C,LB,N,S,W	County
	NW	C2	concrete	C,LB,N,S,W	City
	S	C3	carry in	C,LB,N,S,W	County
	Pennington Pit	D4	concrete	ST,LB,N,S	DNR
	Pennington Pit	D4	shorefishing	ST,LB,N,S	DNR
	Perch Lake	E2	concrete	C,N,S,SB,W	DNR
	Perry Lake	B4	concrete	C,LB,N,S	DNR
	Pig/Lower Whitefish Lake	B3	carry in	C,LB,N,S,W	Township
	Pine Lake	B3	concrete	C,LB,N,S,W	DNR
Pine River	Staircase Landing	B3	carry in	Various	DNR
	Cross Lake Dam	B3	carry in	Various	USCOE
	Cross Lake Dam	B3	shorefishing	Various	DNR
	Harvey Drake	C4	concrete	Various	DNR
	Rock Dam	B3	carry in	Various	DNR
	Platte Lake	F4	concrete	C,LB,N,S,W	DNR
	Pleasant Lake	B3	carry in	ST	DNR
	Portsmouth Pit	D4	concrete	ST	DNR
	Rabbit Lake	C4	concrete	C,LB,N,S,W	DNR
	Red Sand Lake	D2	concrete	C,LB,N,S	County
	Rice Lake (Lum Park)	D3	concrete	C,LB,N,S,W	City
	Rice Lake (Lum Park)	D3	fishing pier	C,LB,N,S,W	City
	Rice Lake (Hesitation WMA)	E5	carry in	C,LB,N,S	DNR
	Rock Lake	F5	concrete	C,LB,N,S	DNR
	Roger Lake	B4	concrete	C,LB,N,S,W	DNR
	Ross Lake	B5	concrete	Various	DNR
	Round Lake	D2	concrete	Various	DNR
	Round Lake	E5	concrete	C,LB,S,W	DNR
	Round Lake	F4	earth	C,LB,N,S,W	County
	Rowe Pit	D4	concrete	ST	County
	Ruth Lake	A4	concrete	C,LB,N,S,W	DNR
	Ruth Lake	A4	fishing pier	C,LB,N,S,W	DNR
	Sagamore Pit	D3	concrete	LB,N,S,	DNR
	Sandbar Lake	C3	concrete	C,LB,N,S	DNR
	Sebie Lake	F2	earth	C,LB,N,S	County
	Section 6 Lake	C4	gravel	C,LB,N,S	County
	Serpent Lake (East)	D5	concrete	C,LB,N,S,W	DNR
	Serpent Lake (West)	D4	concrete	C,LB,N,S,W	City
	Serpent Lake	D4	fishing pier	C,LB,N,S,W	City
	Sibley Lake	B2	concrete	C,LB,N,S	DNR
	Silver Lake	C3	concrete	C,LB,N,S	DNR
	Snowshoe Lake	D4	carry in	ST	County
	South Long Lake	E3	concrete	C,LB,N,S,W	DNR
	South Long Lake	E3	fishing pier	C,LB,N,S,W	DNR
	Stark Lake	B5	concrete	C,LB,N,S	DNR
	Strawberry Lake	B2	earth	ST	DNR
	Trout Lake	C1	carry in	C,LB,N,S,W	City
	Twin Lake	B5	earth	C,LB,N,S	Township
	Upper Dean Lake	B5	concrete	C,LB,N,S	DNR
	Upper Hay Lake	B2	concrete	C,LB,N,S,W	DNR
	Upper Mission Lake	C3	concrete	C,LB,N,S,W	DNR
	Upper South Long Lake	E3	concrete	C,LB,N,S,W	DNR
	Upper Whitefish Lake	B2	concrete	C,LB,N,S,W	DNR
	West Twin	C2	concrete	C,LB,N,S,W	DNR
	Whipple Lake	E2	concrete	S,W	City
	Whipple Lake	E2	fishing pier	S,W	City
	White Sand Lake	E2	concrete	C,N,S,LB	DNR
	Wolf Lake	D4	carry in	C,LB,N,S,W	County
	Yawkey Mine Pit	C4	carry in	N,S,LB	DNR

Fish Species: C — Crappie, CF — Catfish, LB — Largemouth Bass, LT — Lake Trout, M — Muskellunge  
N — Northern Pike, S — Sunfish, SB — Smallmouth Bass, ST — Stream Trout, W — Walleye, N / A — Not Available

Administrator: DNR - MN Dept. of Natural Resources  
MN DOT - MN Dept. of Transportation  
USCOE - U.S. Corps of Engineers

\* State Park Sticker Required

Accessible Accesses



Public water access sites developed after 2012 will have accessible parking spaces and accessible routes to the top of the boat ramp. Some sites have additional accessible routes to a dock and other site amenities. When known, these sites are identified with the red, accessible symbol shown above.

Fishing piers and developed shore fishing sites have been designed to meet the needs of people with disabilities. Parking is generally located within 300 feet of the site and there is a hard surface path from the parking area to the facility. The DNR cooperates with a variety of local units of government to maintain the fishing piers.

If a facility is out of compliance or you have difficulty using any part of an access or pier, please report the problem to the site administrator listed in this guide, or contact the DNR Information Center, 651-296-6157 (888-MINNDNR) or email info.dnr@state.mn.us.