

CROW WING STATE PARK

TRAILS

- Hiking
ungroomed in winter,
open to non-motorized use
- - - Hiking/Snowmobile
- Paul Bunyan State Trail
paved, open to snowmobiles
in winter
- ++++ Mississippi River Trail (MRT)
- Hiking Club

FACILITIES

- Park Office
- Parking
- Public Phone
- Overlook
- Picnic Area
- Picnic Shelter
- Amphitheater
- RV Sanitation Station
- Historic Site
- Primitive Toilet
- Dumpster
- Trailer Access
- Campground
- Camper Cabin
- Interpretive Sign
- Great River Road
- Private Property
public use prohibited



SPECIAL HUNT INFORMATION

Areas closed to hunting

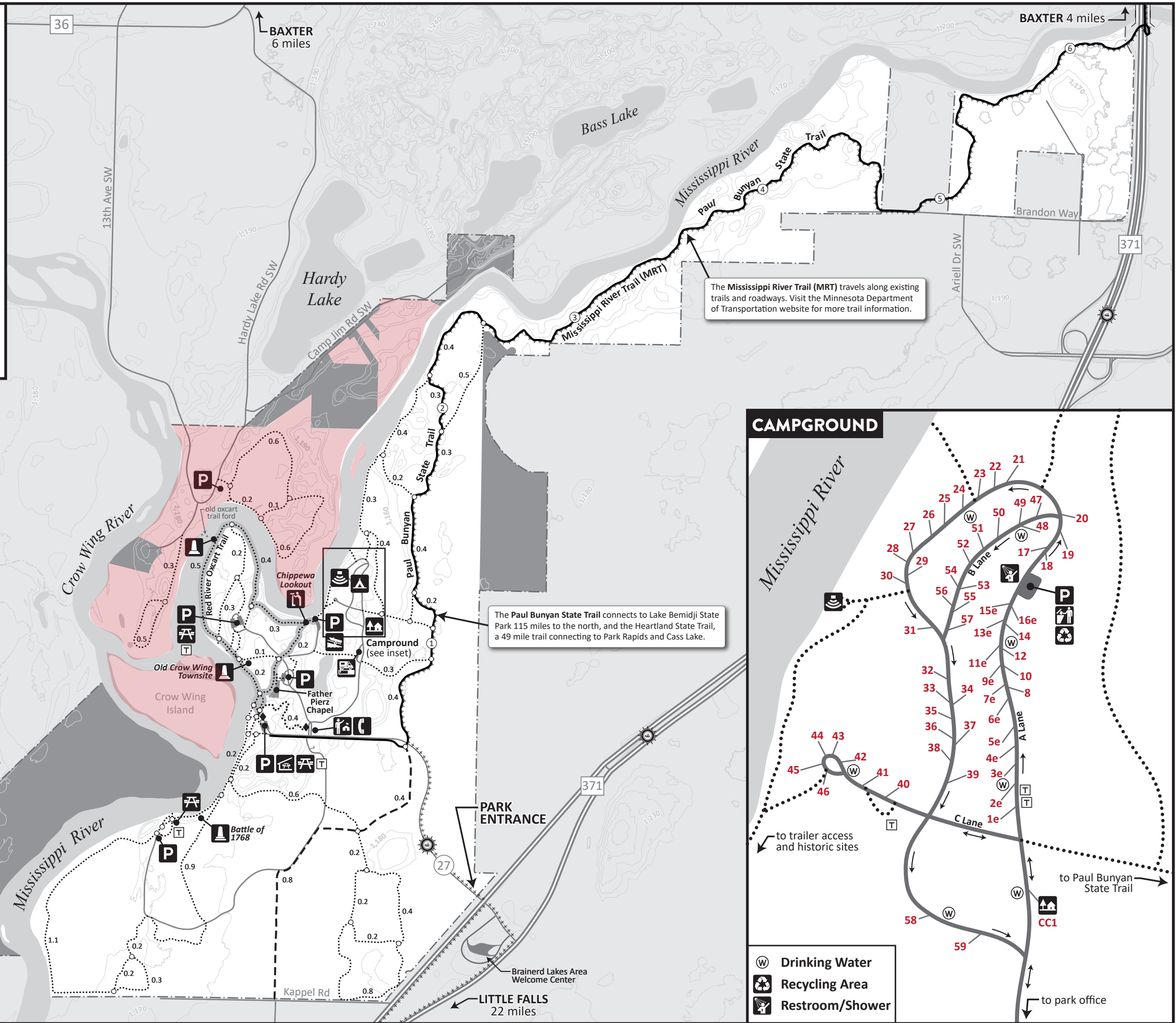
Private property are also closed to hunting, unless written permission is obtained from the landowner.

Scale 1:23,250



Scale in Miles

**CAMP RIPLEY
MILITARY RESERVATION**
Restricted Area - Not Open to Public



CAMPGROUND

