



LAKE JEANETTE STATE FOREST

BOUNDARY WATERS CANOE AREA WILDERNESS

Wilderness Permit Required in BWCAW

LAKE JEANETTE STATE FOREST
11,522 ACRES • ESTABLISHED 1963

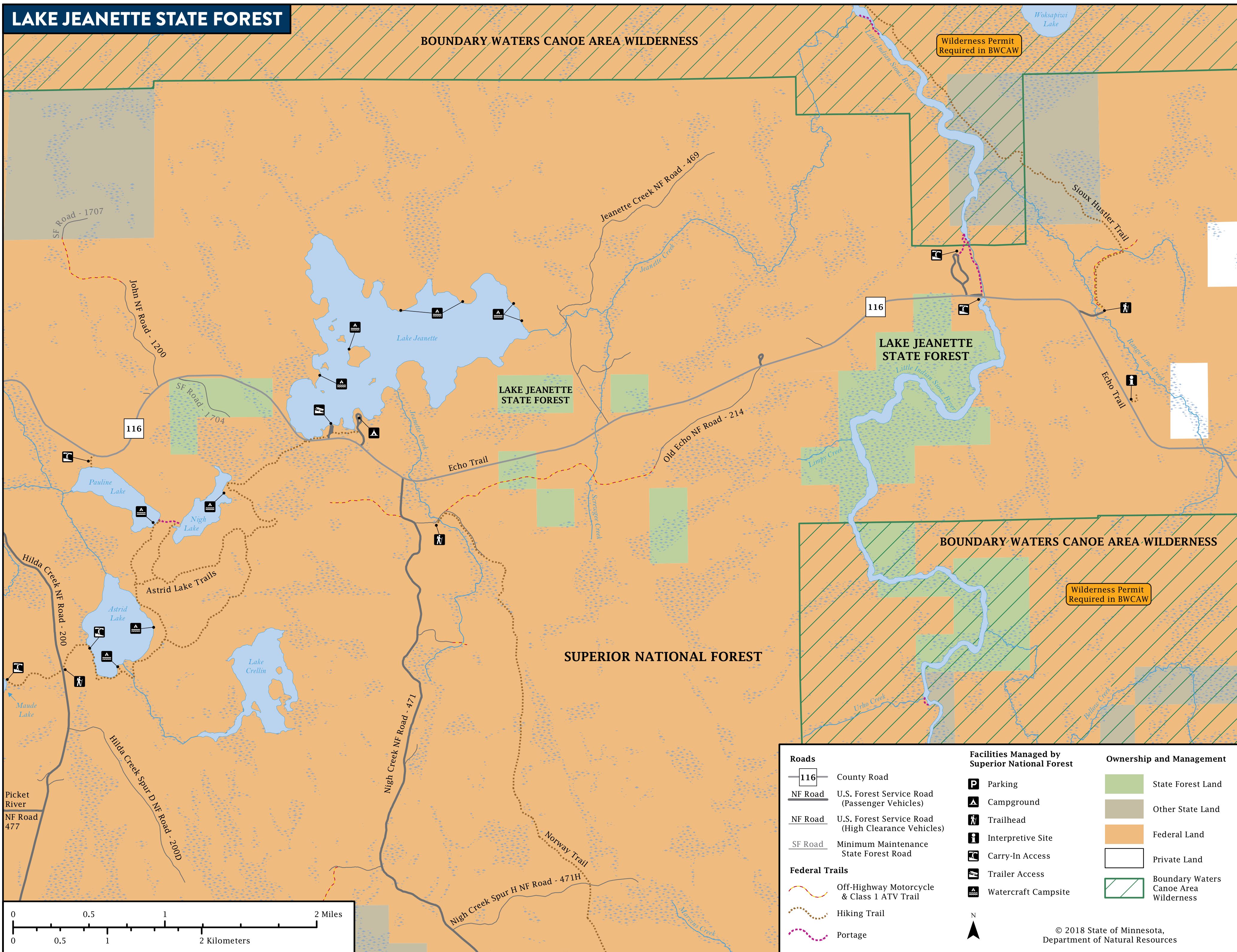
FOREST LANDSCAPE: Located as scattered lands near and within the Superior National Forest and the Boundary Waters Canoe Area Wilderness (BWCAW), this scenic state forest features boreal forests of pine, spruce, and aspen. The rugged terrain contains large boulders, rocky outcroppings, and several interconnecting lakes, beaver ponds, and streams. The forest borders the 638-acre Lake Jeanette, a popular lake for canoeing, kayaking, and fishing.

A WORKING FOREST: From year to year, you may see changes in this forest. The DNR manages the trees, water, and wildlife in state forests to keep them healthy and meet recreational, environmental, and economic goals. Trees are harvested to make a variety of products, such as lumber and building materials, pulp for making paper, pallets, fencing, and telephone poles. Through careful planning, harvesting, and planting, land managers work to improve wildlife habitat. The DNR manages state forests for everyone to use, while preventing wildfires and ensuring forests continue to keep air and water clean.

HISTORY: The forest was largely cut over in the middle of the 20th century. Parts of the forest are within the BWCAW, which was federally designated as part of the National Wilderness Preservation System with the signing of the 1964 Wilderness Act. In 1978, the Minnesota legislature created the BWCAW, adding acres and amending the national Wilderness Act. These laws set aside much of the area as a recreational wilderness for camping and canoe travel. A former logging road beginning in Ely known as the Echo Trail (St. Louis County Road 116) provides access to the lakes of the western BWCAW. Canoeers and nature enthusiasts have flocked to the area since the 1930s, when the Civilian Conservation Corps created the Lake Jeanette Campground on the south shore. Today the U.S. Forest Service operates the campground.

TREES: Look for young and mature jack, red, and white pine. Black spruce grow in the lowland areas. You may also find stands of white spruce, balsam fir, paper birch, and other boreal forest species.

WILDLIFE: Game species include moose, bear, and ruffed and spruce grouse. Other species include gray wolf, lynx, bobcat, beaver, fisher, pine marten, mink, muskrat, otter, snowshoe hare, and wood frog. Birders may spot common loons; hooded mergansers; and goldeneye, ringneck, and black ducks.



LAKE JEANETTE STATE FOREST

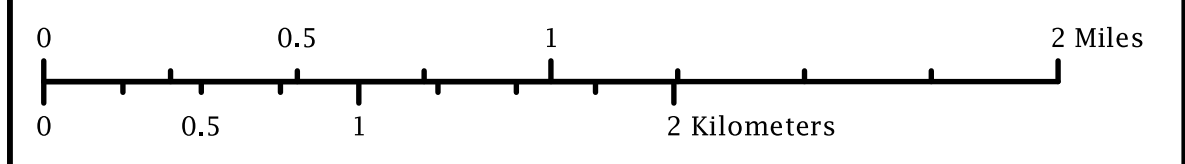
LAKE JEANETTE STATE FOREST

SUPERIOR NATIONAL FOREST

BOUNDARY WATERS CANOE AREA WILDERNESS

Wilderness Permit Required in BWCAW

PUT THIS MAP ON YOUR DEVICE
This map is geo-referenced. Download an app, such as the free Avenza app, on your device and use it to open the geoPDF. The app will place a blue locator dot on the map wherever you take your device, even if you are out of cellular range.



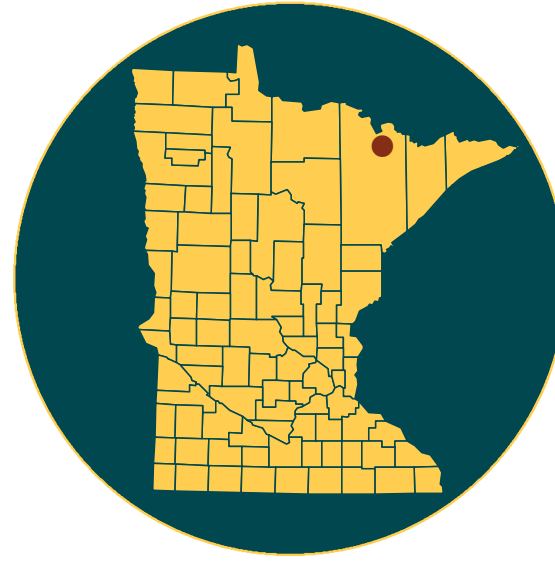
Roads	Facilities Managed by Superior National Forest	Ownership and Management
County Road	Parking	State Forest Land
U.S. Forest Service Road (Passenger Vehicles)	Campground	Other State Land
U.S. Forest Service Road (High Clearance Vehicles)	Trailhead	Federal Land
Minimum Maintenance State Forest Road	Interpretive Site	Private Land
Federal Trails	Carry-In Access	Boundary Waters Canoe Area Wilderness
Off-Highway Motorcycle & Class 1 ATV Trail	Trailer Access	
Hiking Trail	Watercraft Campsite	
Portage		

© 2018 State of Minnesota, Department of Natural Resources

The information in this map is dynamic and may change over time. The Minnesota DNR is not liable for improper or incorrect use of the data described and/or contained. The data and related graphics are not legal documents and are protected by copyright.



LAKE JEANETTE STATE FOREST



GENERAL STATE FOREST RULES

Whether you are camping, hunting, riding, geocaching, skiing, or gathering berries, take care to leave the forest in good condition.

- Forest lands are open at all times unless otherwise posted.
- On state forest land, summer camping is limited to 14 days and winter camping (between the second Sunday in September and the first Saturday in May) is limited to 21 days. In the Superior National Forest and the Boundary Waters Canoe Area Wilderness (BWCAW), camping is limited to 14 days, year-round.
- Dispersed camping is also allowed on state forest land at least 1 mile outside of campground areas for no fee.
- Pack out what you pack in. Remove all personal property. Do not burn litter or garbage.
- Don't leave equipment unattended for more than 24 hours.
- Building any permanent structures, including deer stands, is prohibited.
- Use firewood sold by the DNR, or harvested in Minnesota and certified by the Minnesota Department of Agriculture or USDA, or from vendors who harvested firewood in the same county as the state forest. Bring your receipt. You may also collect dead fuelwood on site. Kiln-dried, unstained, unpainted dimensional lumber free from metal or other foreign objects is also permitted. It is illegal to bring in any other firewood. These rules are to prevent accidentally introducing harmful pests such as emerald ash borer. mndnr.gov/firewood
- Fireworks are prohibited on all state and federal lands.
- Keep campfires no larger than 3 feet wide and 3 feet high. Attend the fire at all times. Completely extinguish fires before leaving the area. It should be cold to the touch.
- Bury human waste (if toilets are not available) and animal parts such as fish guts at least 150 feet from a water body and away from areas where it could cause a nuisance or hazard to public health.
- Collecting berries, mushrooms, or dead fuelwood for personal use while in the forest is OK. However collecting large amounts of these items to take home for personal use or sale requires a permit. Get permits from your local DNR forestry office. mndnr.gov/areas/forestry
- Hiking, horseback riding, and mountain biking are allowed on all trails except groomed ski trails.
- This is a partial list of rules. For more information, visit the website listed below.

CAMPING

Dispersed camping with no amenities or fees is allowed on state forest land that is at least 1 mile away from a designated campground. Camping is limited to 21 days between the second Sunday in September and the first Saturday in May. Bury human waste (if toilets are not available) and animal parts such as fish guts at least 150 feet from a water body and away from areas where it could cause a nuisance or hazard to public health.

Please practice the "Leave No Trace" camping ethic.

LAKE JEANETTE CAMPGROUND

The USDA Forest Service operates a campground on the south shore of Lake Jeanette, accessible from the Echo Trail (St. Louis County Road 116). This campground has 12 designated campsites, toilets, drinking water, fire rings, and a boat launch. Four of the campsites can be reserved. The others are first-come, first-served. Fees charged.

USDA FOREST SERVICE BACKCOUNTRY CAMPSITES

The Forest Service manages six backcountry campsites on Nigh, Pauline, Astrid, and Maude lakes, accessible on foot or by canoe from the 7-mile Astrid Lake Hiking Trail. The trail begins at the first parking lot on the right-hand side of the Lake Jeanette Campground entrance road. First-come, first-served.

There are six additional backcountry campsites on Lake Jeanette north of the campground, accessible by canoe or motorboat only. First-come, first-served.

Information about camping on land managed by the USDA Forest Service. recreation.gov

BOATING

Lake Jeanette is open to canoes, kayaks, and motorboats. Boaters should watch for rocks.

This area is popular to explore by canoe and kayak, especially along the Little Indian Sioux River in the eastern part of the forest. Access the river from the Echo Trail (St. Louis County Road 116).

There is a boat landing on the southern shore of Lake Jeanette off the Echo Trail. Parking is allowed with a campsite reservation. Maintained by the DNR and USDA Forest Service.

Visitors to the Boundary Waters Canoe Area Wilderness (BWCAW) may use canoes or kayaks only, and must have a visitor permit.

Motorboats are allowed on all lakes outside the BWCAW.

Register your canoe, kayak, or motorboat at mndnr.gov/licenses/watercraft

TRAILS

All trails and roads are open to hiking and mountain biking.

Off-trail hiking, cross-country skiing, and snowshoeing are allowed. Groomed cross-country skiing trails are available in the Ely and Isabella areas.

USDA FOREST SERVICE TRAILS

The Sioux Hustler Wilderness Trail offers 26 miles for experienced hikers with navigation skills. Access the trailhead from the Echo Trail just east of the Little Indian Sioux River. A BWCAW visitor permit is required.

go.usa.gov/xQUSD

The Norway Trail is open for hiking and mountain biking on most of the trail. It begins south of Lake Jeanette Campground. Mountain bikers may use the north part of the trail only. Visitors to the south end of the trail need a BWCAW visitor permit.

go.usa.gov/xQUSg

Bikes and wheeled recreational equipment are not allowed in the BWCAW.

Information and maps about the Superior National Forest. fs.usda.gov/recrea/superior

SCAN TO DOWNLOAD MAP



CLASSIFICATION: LIMITED

All trails on state-managed lands are classified regarding motor vehicles. The parts of Lake Jeanette State Forest that are outside the BWCAW are classified as "limited," which means that off-road vehicles (OHV), all-terrain vehicles (ATV), and off-highway motorcycles (OHM) may operate on signed roads and trails. Highway licensed vehicles are allowed on forest roads.

There are no off-highway vehicle trails in Lake Jeanette State Forest. Certain trails in the Superior National Forest allow some motorized uses.

The Echo Trail (County Road 116) is open to ATVs, OHVs, and OHMs. No motorized use is allowed off roads and trails.

BWCAW CLASSIFICATION: CLOSED

The parts of the Lake Jeanette State Forest that are within the BWCAW are classified as "closed." No motorized vehicles or boats are allowed at any time.

HUNTING AND TRAPPING

The Lake Jeanette State Forest provides habitat for hunting and trapping. In the appropriate season, licensed hunters can hunt for white-tailed deer, grouse, and other game.

mndnr.gov/hunting

FIREARMS AND BOWS

Firearms must be unloaded and cased and bows must be unstrung and cased while in or within 200 feet of a state recreation area (campground, day-use area, parking area, boat launch, etc.) or 450 feet of a national forest recreation area such as the Lake Jeanette Campground. Exception: During seasons open for hunting, a person may carry a loaded, uncased firearm or strung bow from a forest recreation area to hunt outside of the area.

Cutting shooting lanes is not allowed.

Building any permanent structures, including deer stands, is prohibited.

Regulations about hunting, trapping, firearms, bows, limits, seasons, and deer stands on state-managed land.

mndnr.gov/regulations/hunting

Regulations about shooting on federally managed land. fs.fed.us/visit/know-before-you-go/shooting

FISHING

Anglers may find burbot, largemouth bass, northern pike, and walleye in Lake Jeanette. There are no special provisions or restrictions on fishing in state forests. You must have the proper license and abide by the same rules and seasons as anywhere else in Minnesota.

Avoid spreading invasive organisms such as zebra mussel larvae or spiny waterfleas by not transporting lake or river water, including in bait buckets. Dispose of in trash or pack out unused bait and live worms where they can't reach water or soil.

Visit mndnr.gov/fishing for up-to-date regulations.

RESPECT PRIVATE PROPERTY

Many state forests contain private land within their boundaries, so know where you are. Watch for posted "No Trespassing" and "No Hunting" signs and stay off private property.

You must have permission before entering private land, even to cross it to access public land.

Trespassing is a misdemeanor. If convicted, you could lose your license to hunt. All conservation and peace officers enforce trespass laws.

KNOW FEDERAL LAND USES AND REGULATIONS

Lake Jeanette State Forest is a patchwork of state-managed land within areas of federally managed and private land. Rules may change as you cross boundaries.

For information about hunting, off-highway vehicle use, snowmobiling, camping, and other recreation in the Superior National Forest, visit

www.fs.usda.gov/superior

More resources for the Superior National Forest are at the USDA Forest Service Office, 320 US Highway 53, Cook, MN 55723, 218-666-0020.

SPECIAL BWCAW RULES

Whether camping, canoeing, kayaking, hiking, hunting, or trapping, all visitors to the BWCAW must have a wilderness permit.

go.usa.gov/xnu9r

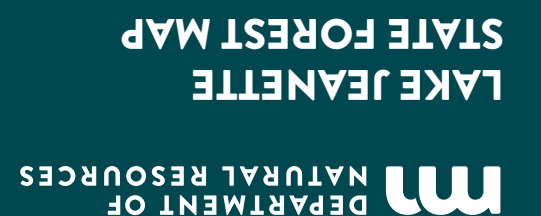
RESPECT THE LAND

Whether you're riding or walking, tread lightly on the land. Be courteous to others, respect private property, and obey the law.

LEAVE TROUBLE BEHIND

Help prevent the spread of invasive plants and animals.

- Clean your gear before entering and leaving the recreation site.
- Remove mud, seeds, and plants from clothes, pets, boots, gear, vehicles, and watercraft.
- Stay on designated trails.
- PlayCleanGo.org



FOR MORE INFORMATION

Minnesota Department of Natural Resources
Info.dnr@state.mn.us
 651-296-6157 | 888-646-6367
 TDD (Telecommunications Device for the Deaf)
 651-296-5484 | 800-657-3929

DNR TIP LINE (Turn in Poachers)

800-652-9093

EMERGENCY SERVICE - DIAL 911

ST. LOUIS COUNTY SHERIFF

218-726-2340

NEAREST HOSPITAL SERVICES

Cook Hospital
 10 5th St. SE, Cook, MN 55723
 218-666-5945

Ely Bloomenson Community Hospital

328 W. Conan St. Ely, MN 55731
 218-365-3271

The Minnesota DNR prohibits discrimination in its programs and services based on race, color, creed, religion, national origin, sex, public assistance status, age, sexual orientation or disability. Persons with disabilities may request reasonable modifications to access or participate in DNR programs and services by contacting the DNR ADA Title II Coordinator at info.dnr@state.mn.us or 651-296-6157. Discrimination inquiries should be sent to Minnesota DNR, 500 Lafayette Road, St. Paul, MN 55155-4049, or Office of Civil Rights, U.S. Department of the Interior, 1849 C. Street NW, Washington, D.C. 20240.

© 2018, State of Minnesota, Department of Natural Resources

Printed on Minnesota made paper containing a minimum of 10 percent post-consumer waste.



FORESTRY
 500 Lafayette Road, St. Paul, MN 55155
 888-646-6367
mndnr.gov

