



# BELTRAMI ISLAND STATE FOREST

703,382 ACRES • ESTABLISHED 1931

**FOREST LANDSCAPE:** The "island" in the forest's name refers to small, teardrop-shaped islands surrounded by miles of peat bog that was created when glacial Lake Agassiz drained after glaciers melted 10,000 years ago. Observant visitors might detect the shorelines of this ancient lake—several low, sandy ridges that extend in a general northwest-southeast direction in the forest. Today, pine covers those ridges.

**A WORKING FOREST:** From year to year, you may see changes in this forest. The DNR manages the trees, water and wildlife in state forests to keep them healthy and meet recreational, environmental, and economic goals. Trees are harvested to make a variety of products, such as lumber and building materials, pulp for making paper, pallets, fencing, and telephone poles. Through careful planning, harvesting, and planting, land managers work to improve habitat for white-tailed deer, bear, grouse, woodcock, furbearers, waterfowl, and songbirds. The DNR manages state forests for everyone to prevent wildfires and keep our air and water clean.

**HISTORY:** American Indians have lived in the Beltrami Island area for thousands of years. French explorers arrived in the 1730s, searching for a route to the Pacific. The British-owned Hudson's Bay Company took over in 1760, and Americans assumed control with the Treaty of 1818. Under the "Old Crossing" treaty of 1863, much of northwestern Minnesota was reserved for the Ojibwe people, and today the Red Lake Band retains many parcels within the forest. Extensive ditching was done by Civilian Conservation Corps (CCC) crews in the 1930s to drain peatlands for agriculture, but the sandy soils and extensive swamps proved unsuitable for farming. By 1940 most settlers left. Abandoned homesteads and cemeteries can be found in the forest. Norris Camp, a CCC camp established in 1936, retains many of the original buildings and now serves as the headquarters of the Red Lake Wildlife Management Area. It also served as a Restlement Administration Camp that helped plant abandoned farm fields back to pine forests.

**TREES:** Aspen and lowland conifers such as spruce, tamarack, and cedar grow on much of the forest. Red pine, aspen, and jack pine grow on better-drained soils. Smaller acreages of birch, white pine, and hardwoods such as ash and elm are interspersed. The Roosevelt area between the towns of Williams and Warroad is one of the few places to find red maple in extreme northwestern Minnesota.

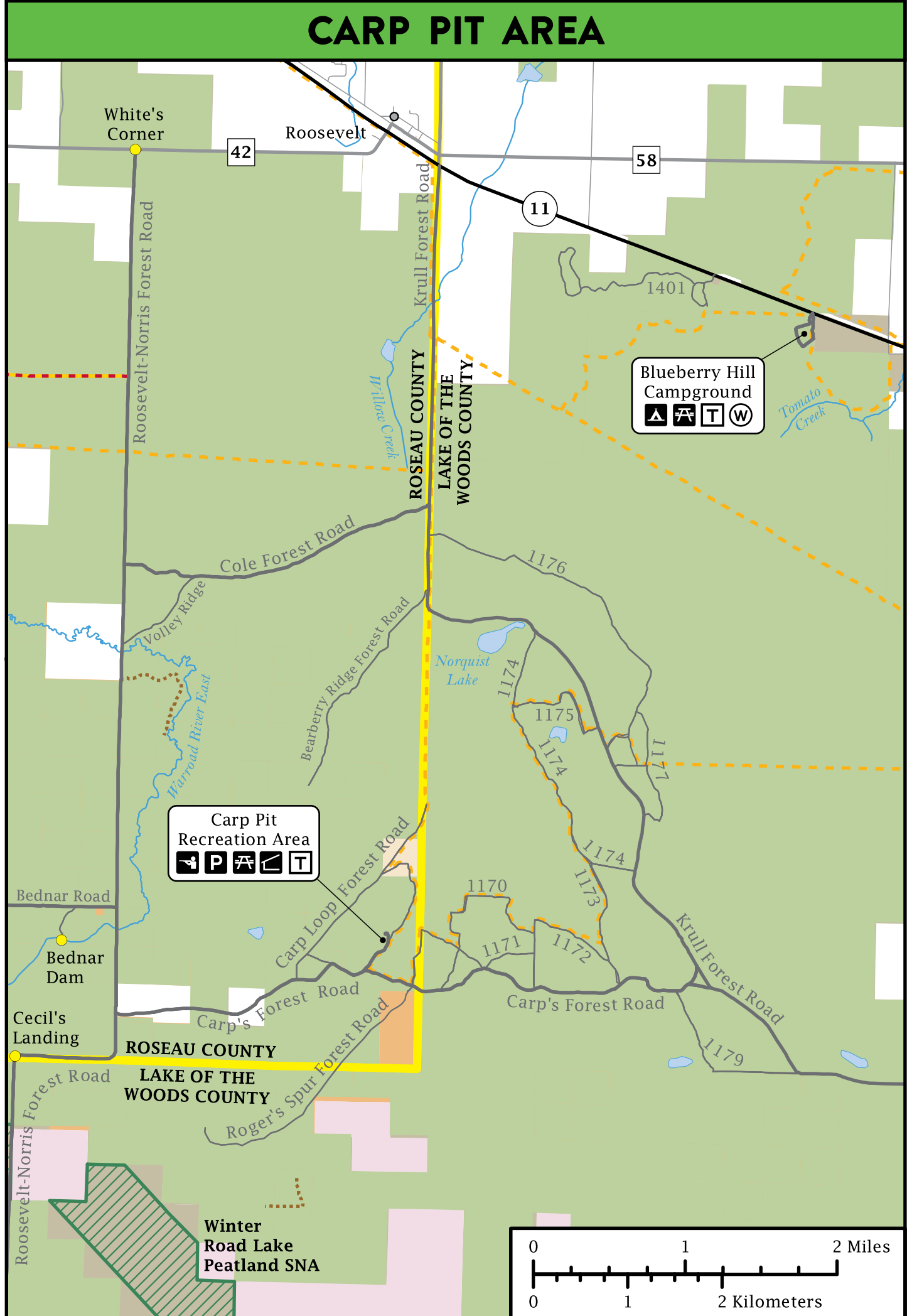
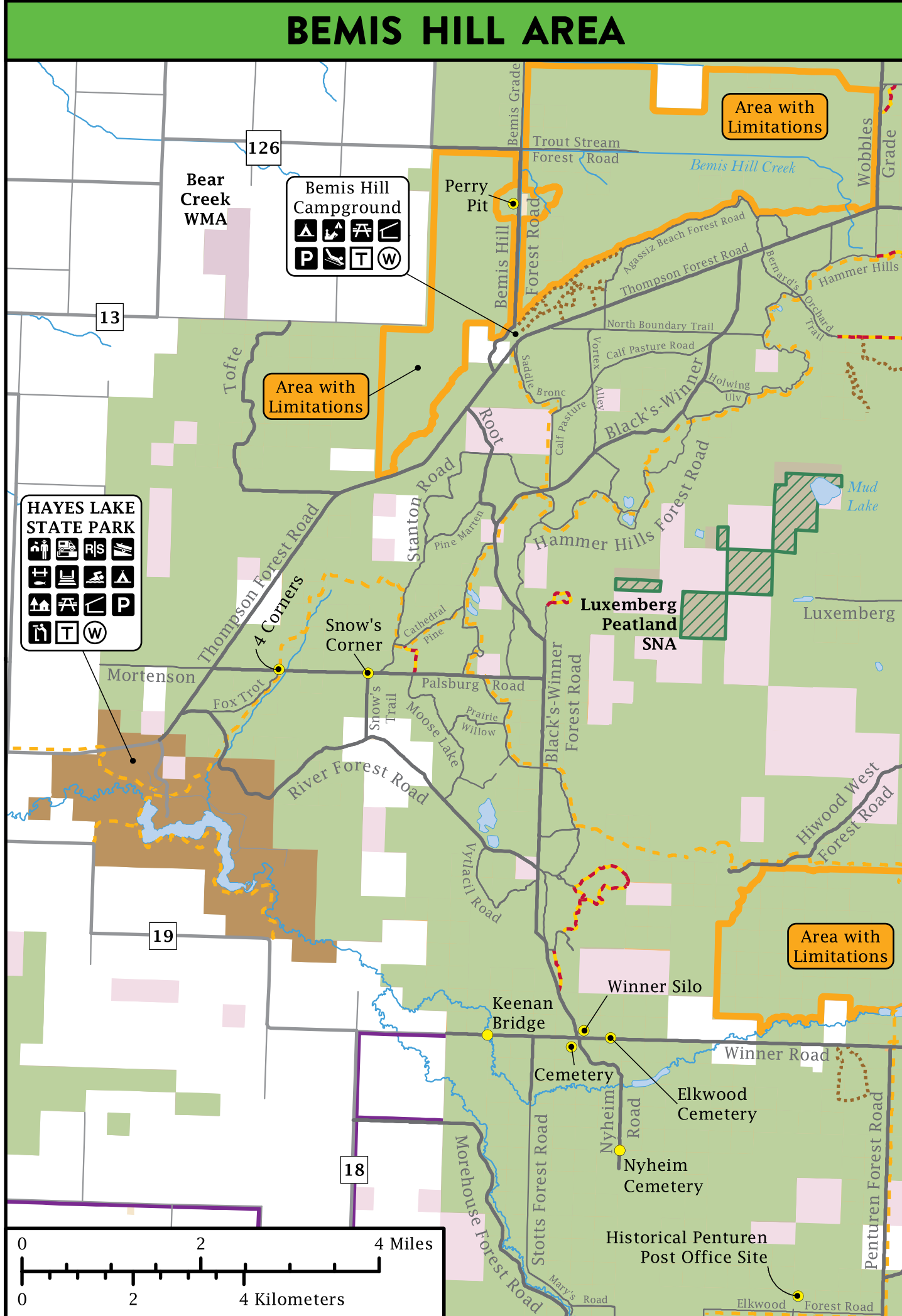
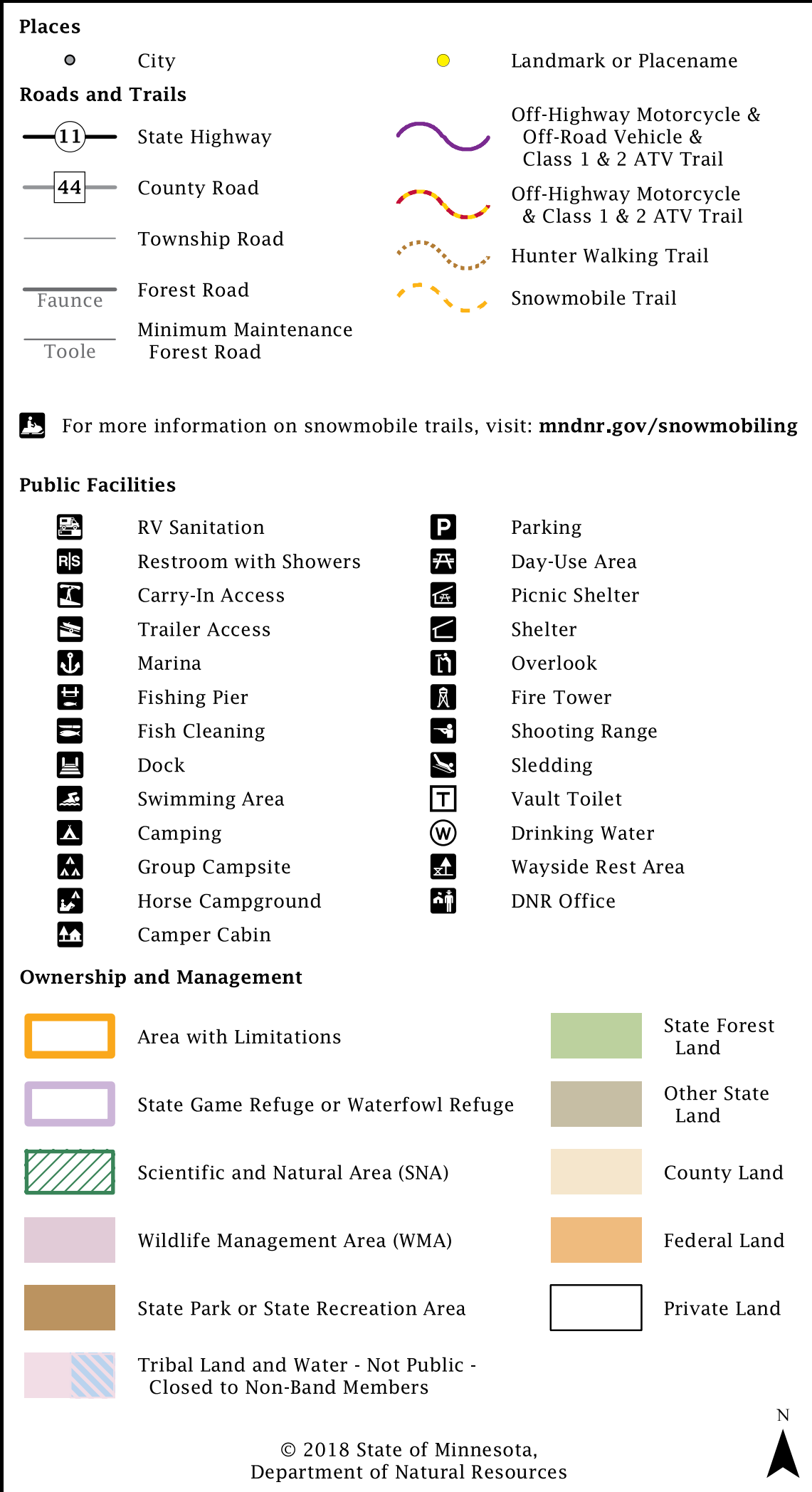
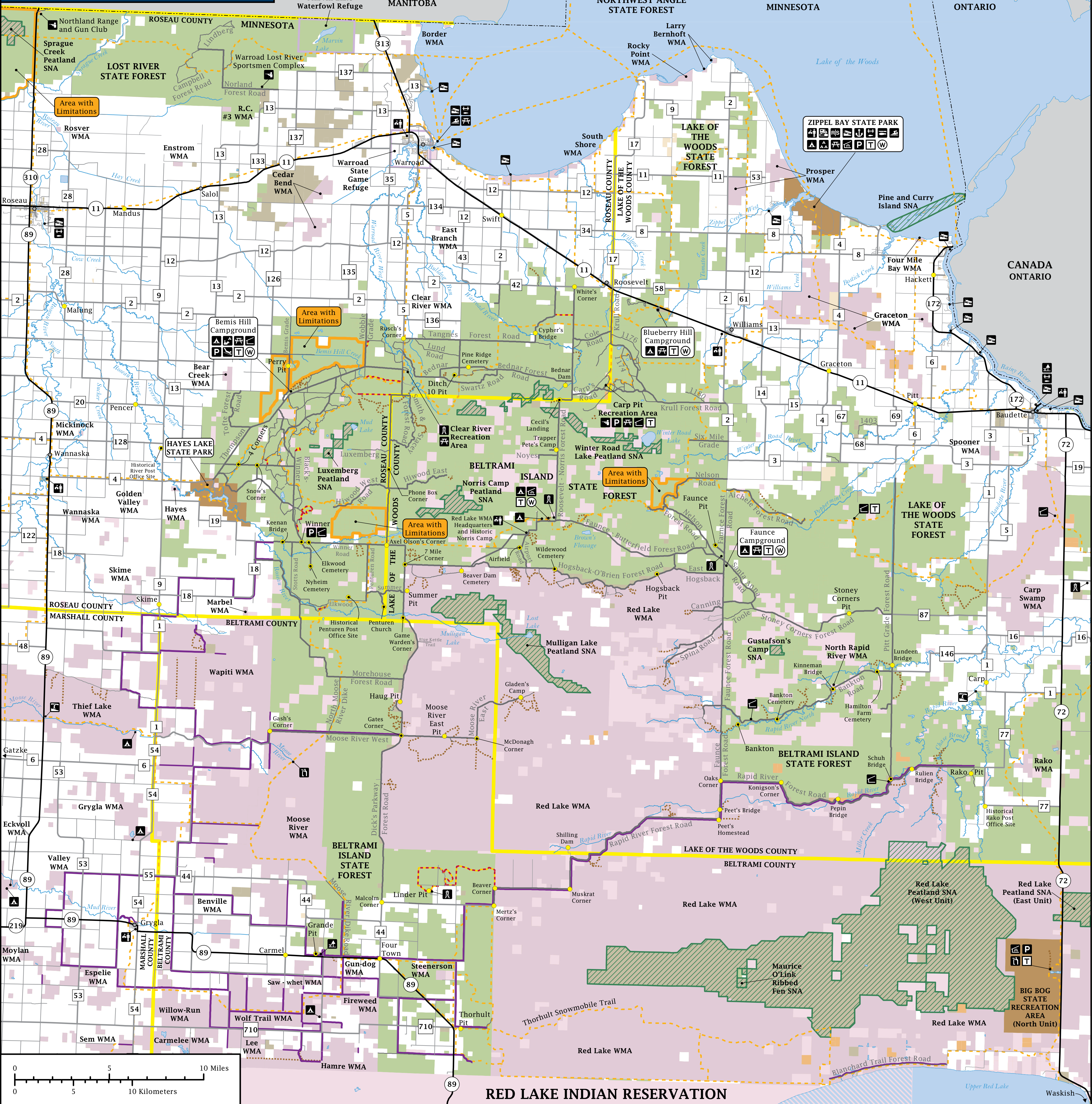
**WILDLIFE:** White-tailed deer, black bear, gray wolf, red fox, marten, fisher, otter, bobcat, beaver, and snowshoe hare can be found in the forest. Moose are also present, although their numbers have declined. While hunters come for ruffed, sharp-tailed, and spruce grouse, birds have observed more than 250 bird species in the area, including 23 species of warblers. Birds may also see Connecticut warblers, great gray owls, northern hawk owls, short-eared owls, northern goshawks, black-backed woodpeckers, gray jays, white-winged and red crossbills, and boreal chickadees. The area is also home to hundreds of species of dragonflies, moths, butterflies, and beetles.

**PUT THIS MAP ON YOUR DEVICE**  
This map is geo-referenced. Download an app such as the free Avenza app on your device and use it to open the geoPDF. The app will place a blue locator dot on the map wherever you take your phone, even if you are out of cellular range.

The information in this map is dynamic and may change over time. The Minnesota DNR is not liable for improper or incorrect use of the data described and/or contained. The data and related graphics are not legal documents, and are protected by copyright.



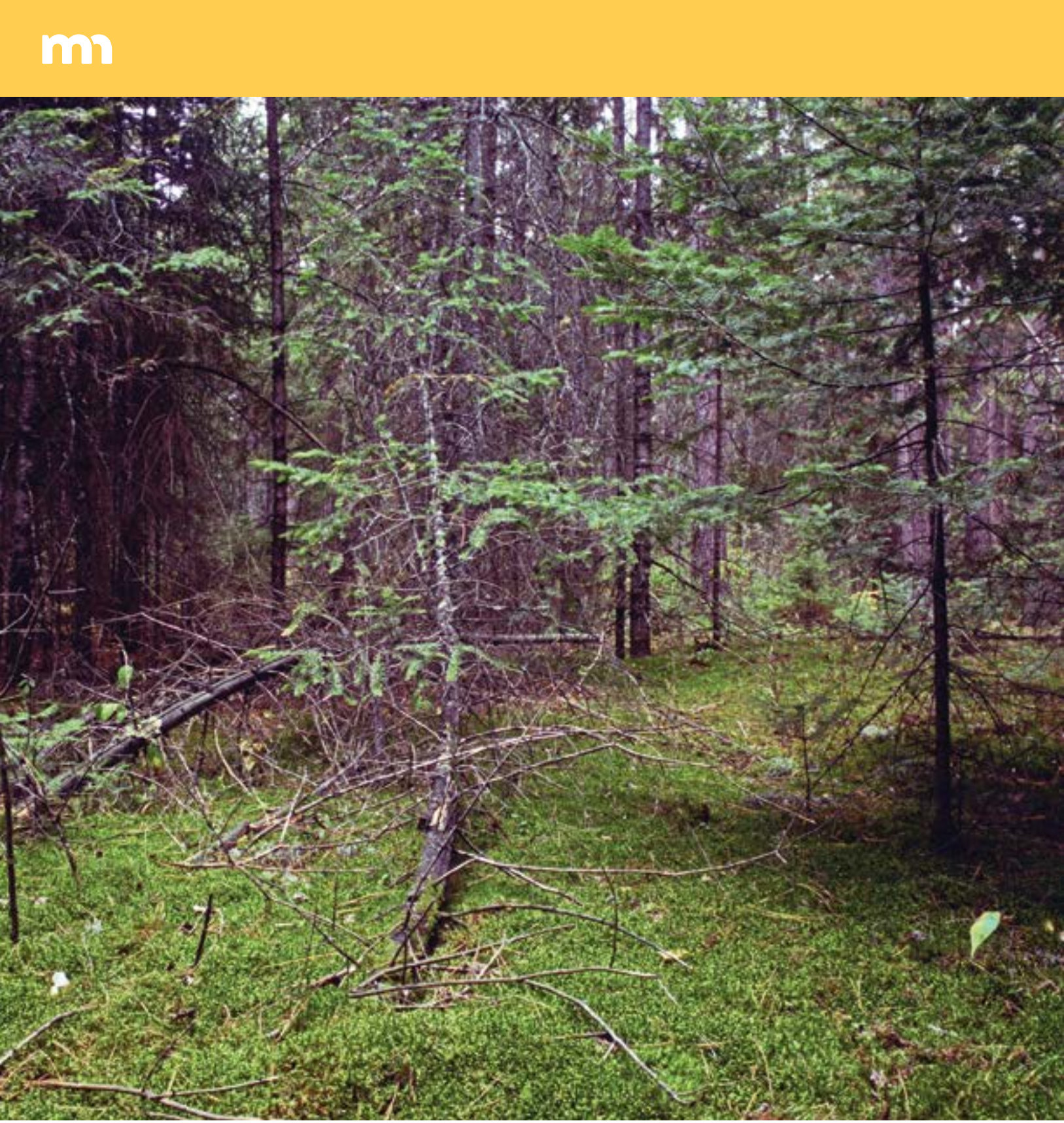
## BELTRAMI ISLAND STATE FOREST



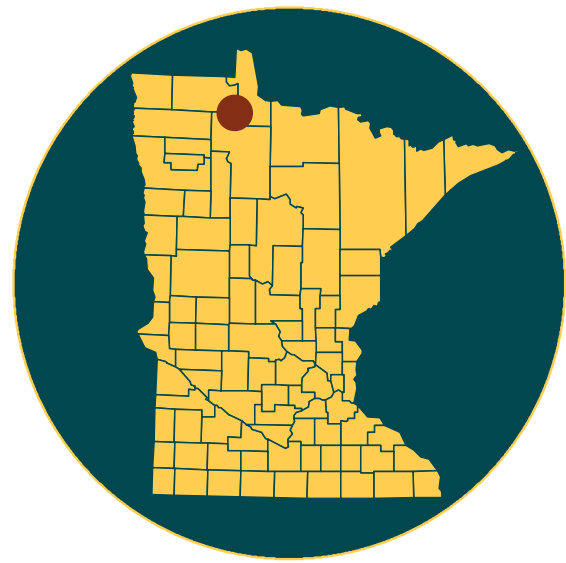
The Minnesota DNR prohibits discrimination in its programs and services based on race, color, creed, religion, national origin, sex, public assistance status, age, sexual orientation or disability. Persons with disabilities may request reasonable modifications to access or participate in DNR programs and services by contacting the DNR ADA Title II Coordinator at [info.dnr@state.mn.us](mailto:info.dnr@state.mn.us) or 651-296-6557. Discrimination inquiries should be sent to Minnesota DNR, 500 Lafayette Road, St. Paul, MN 55155-4049, or Office of Civil Rights, U.S. Department of the Interior, 1849 C Street NW, Washington, D.C. 20240.

© 2018, State of Minnesota, Department of Natural Resources





# BELTRAMI ISLAND STATE FOREST



## CAMPING AND RECREATION AREAS

No reservations required. Campsites are first-come, first-served. Campsites have a cleared area, fire ring, and picnic table. Camping is available all year.

### BEMIS HILL CAMPGROUND

Located along Thompson Forest Road, this campground has eight campsites with fire rings and picnic tables, including four horse campsites with tie rails and manure disposal for horses. A large parking lot across the road from the campground offers spots for horse trucks and trailers. There are garbage cans, two vault toilets, and one well for drinking water. The campground also has a winter sledding slope, a picnic shelter with a fireplace, and access to snowmobile trails. Off-highway vehicles (OHVs) may enter and exit the campground. There is good birding and berry-picking nearby.

### BLUEBERRY HILL CAMPGROUND

This campground has eight walk-in sites, one toilet, and one well for drinking water. OHVs may enter and exit the campground. No garbage containers—pack out what you pack in. There is good hunting and berry-picking nearby.

### FAUNCE CAMPGROUND

This campground has six campsites, one vault toilet, and one well for drinking water. No garbage containers—pack out what you pack in. OHVs may enter and exit the campground. There is good access to remote and uncrowded wooded sites.

### BROWN'S CREEK CAMPING AREA

Located along Faunce-Butterfield Road, this rustic camping area has two outhouses during hunting season, picnic tables, fire rings, and a water pump. No garbage containers—pack out what you pack in.

### CLEAR RIVER CAMPING AND STAGING AREA

Here you can find mowed camping areas and a hand-pump for drinking water. No toilets. The staging area contains a small parking lot and horse tie-offs. No designated campsites, fire rings, or garbage containers—pack out what you pack in. The Clear River Fire Tower is nearby.

### NORRIS CAMPING AND DAY-USE AREA

This camping area has a picnic shelter, fire rings, picnic tables, two vault toilets, and one well for drinking water. No designated campsites or garbage containers—pack out what you pack in.

### WINNER SILO DAY-USE AREA

This day-use area is available to horseback riders and other trail users. There are picnic tables, horse tie-offs, and a manure disposal area. No camping, toilets, water, or garbage containers—pack out what you pack in.

## TRAILS

All trails and roads are open to hiking, mountain biking, and horseback riding. Horseback riders need a horse pass. [mndnr.gov/horseback\\_riding/horsepass.html](https://mndnr.gov/horseback_riding/horsepass.html)

Trails as signed are open to all-terrain vehicles (ATVs), off-road vehicles (ORVs), and off-highway motorcycles (OHMs). ATVs, ORVs, and OHMs must have current registration or a trail pass. [mndnr.gov/licenses/ohv](https://mndnr.gov/licenses/ohv)

### OFF-HIGHWAY VEHICLE TRAILS

This state forest offers several miles of ATV and OHM trails and roads. All trails are marked. The flat terrain offers an enjoyable ride for all experience levels.

- Highway-licensed vehicles and off-highway vehicles (OHVs) may operate on any road unless posted closed.
- Many OHV trails within the state forest are open for snowmobiles between December 1 and April 1. Look for posted signs.
- In many Wildlife Management Areas (WMAs) south and west of the state forest, ATV use is allowed seasonally on signed trails. Special ATV use regulations may apply during firearms deer season on select WMAs in this area. See [mndnr.gov/regulations/hunting](https://mndnr.gov/regulations/hunting)
- Visit [mndnr.gov/ohv](https://mndnr.gov/ohv) for up-to-date rules, maps, and trail and road closures.

### CLASSIFICATION: MANAGED

All trails on state lands are classified regarding motor vehicles. The Beltrami Island State Forest is classified as "managed," which means that highway-licensed vehicles and OHVs are allowed on roads, routes, and designated trails. ATV traffic off roads, routes, and designated trails is prohibited, except when needed to retrieve big game during the proper season and with the proper license.

### KNOW YOUR VEHICLE

Always make sure you are riding on the appropriate trail, designated and signed for your vehicle. OHVs must be registered in Minnesota or have a trail pass. [mndnr.gov/licenses/ohv](https://mndnr.gov/licenses/ohv)

### SNOWMOBILE TRAILS

Several miles of snowmobile trails wind their way through the forest. Trails located on forest roads may be plowed during the winter for logging activities. Other trails are groomed. Trails are marked with orange signs posted along the route.

- Snowmobile trail maps: [mndnr.gov/snowmobiling/interactive\\_map](https://mndnr.gov/snowmobiling/interactive_map)
- Snowmobiles must have current registration. See [mndnr.gov/regulations/snowmobile](https://mndnr.gov/regulations/snowmobile)

## HUNTING AND TRAPPING

Hunting and trapping are allowed during the appropriate season and with the correct license. State forests and WMAs do contain private land holdings within their boundaries, many of which are signed "no hunting."

### mndnr.gov/hunting

The Red Lake Band of Chippewa owns lands scattered throughout the forest. Any use of Band land by non-band members without a license or permission from the Band is trespassing. The Band sells small game hunting licenses to non-band members. [redlakednr.org/hunting-seasons](https://redlakednr.org/hunting-seasons)

### FIREARMS AND BOWS

Firearms must be unloaded and cased bows must be unstrung and cased while in or within 200 feet of a forest recreation area (campground, day-use area, parking area, etc.). Exception: During seasons open for hunting, a person may carry a loaded, uncased firearm or strung bow from a forest recreation area to hunt outside of the area.

For up-to-date regulations about hunting, trapping, firearms, bows, seasons, limits, and deer stands, visit [mndnr.gov/regulations/hunting](https://mndnr.gov/regulations/hunting)

Cutting trees for shooting lanes is not allowed.

## WILDLIFE MANAGEMENT AREAS

WMAs provide habitat for game such as deer, bear, grouse, woodcock, and waterfowl, as well as nongame species such as owls, warblers, butterflies, and woodpeckers. WMAs are established to protect lands and waters that have high potential for wildlife, public hunting, trapping, and fishing. Hunting is allowed with the proper license and during the proper season in all WMAs in this area. Camping is only allowed in established campgrounds or by permit in dispersed campsites.

ATVs are not allowed in these WMAs: Red Lake (except on the Rapid River and Blanchard Trail State Forest Roads), Carp Swamp, East Branch, Clear River, South Shore, Prosper, Graceton Bog, Four Mile Bay, Spooner, Steenerson, Rako, North Rapid River, Border, Rocky Point, and Larry Bernhoft.

ATVs are allowed to retrieve deer only in these WMAs: Bear Creek, Enstrom, Cedar Bend, Espelle, Hayes, Skime, and Thief Lake.

ATVs are allowed only during certain hours of deer season in these WMAs: Moose River, Fireweed, Gun Dog, Hamre, Lee, Grygla, Benville, Saw Whet, Wolf Trail, Carmelee, Sem, Wapiti, Willow Run, and Reiner.

Visit [mndnr.gov/wma\\_regulations](https://mndnr.gov/wma_regulations) for up-to-date regulations.

### WMA HIGHLIGHT: RED LAKE

The 324,699-acre Red Lake WMA is the largest in the state. Norris Camp, a CCC camp on the National Register of Historic Places, serves as the WMA's headquarters and provides camping, trapping, and other permits and hunting information. There are many miles of mowed hunter-walking trails. This WMA is a good place to hunt for white-tailed deer, ruffed grouse, bear, and woodcock. Bird watchers, photographers, and butterfly enthusiasts are also drawn to this area. Berry-pickers can find blueberries, juneberries, chokecherries, highbush cranberries, and other wild berries.

### WMA HIGHLIGHT: MOOSE RIVER

Much of Moose River WMA is an impoundment created to reduce downstream flooding and provide wildlife habitat. The wetland areas east of the dike are comprised mostly of open water and cattails, great habitat for waterfowl hunting and birdwatching. Islands of mostly aspen forest and surrounded by brushlands are in the northwest corner. Elk occasionally have been observed west of the Moose River Impoundment. This WMA is a good place to hunt for white-tailed deer, bear, grouse, woodcock, and waterfowl.

## GENERAL STATE FOREST RULES

Whether you are camping, hunting, riding, geocaching, skiing, or gathering berries, take care to leave the forest in good condition.

- Forest lands are open at all times unless otherwise posted.
- The Bemis Hill, Blueberry Hill, and Faunce campgrounds, along with other camping areas, have limited amenities. Campsites are first-come, first-served. Campgrounds are open all year.
- Summer camping (campground and dispersed) is limited to 14 days. Winter camping is limited to 21 days between the second Sunday in September and the first Saturday in May.
- Dispersed camping is also allowed on state forest land at least 1 mile outside of the campground for no fee.
- Pack out what you pack in. Remove all personal property. Do not burn litter or garbage.
- Don't leave equipment unattended for more than 24 hours.
- Building permanent structures or deer stands of any kind is prohibited.
- Fireworks are prohibited on all state forest land.
- Use firewood sold by the DNR, or harvested in Minnesota and certified by the Minnesota Department of Agriculture or USDA, or from vendors who harvested firewood in the same county as the state forest. Bring your receipt. You may also collect dead fuelwood on site. Kiln-dried, unstained, unpainted dimensional lumber free from metal or other foreign objects is also permitted. It is illegal to bring in any other firewood. These rules are to prevent accidentally introducing harmful pests such as emerald ash borer. [mndnr.gov/firewood](https://mndnr.gov/firewood)
- Keep campfires no larger than 3 feet wide and 3 feet high. Attend the fire at all times. Completely extinguish fires before leaving the area. It should be cold to the touch.
- Bury human waste (if vault toilets are not available) and animal parts such as fish guts at least 150 feet from a water body and away from areas where it could cause a nuisance or hazard to public health.
- Collecting berries, mushrooms, or dead fuelwood for personal use while in the forest is OK. However collecting large amounts of fuelwood to take home for personal use or sale requires a permit. Get permits form your local DNR forestry office. [mndnr.gov/areas/forestry](https://mndnr.gov/areas/forestry)
- Hiking, horseback riding, and mountain biking are allowed on all trails except groomed ski trails.
- This is a partial list of rules. For more information, visit the website listed below.

[mndnr.gov/forest/rules](https://mndnr.gov/forest/rules)

## FISHING

There are no special provisions or restrictions on fishing in state forests. You must have the proper license and abide by the same rules and seasons as anywhere else in Minnesota.

Visit [mndnr.gov/fishing](https://mndnr.gov/fishing) for up-to-date regulations.

Fishing is prohibited in Upper Red Lake within tribal boundaries.

## MINNESOTA SCIENTIFIC AND NATURAL AREAS

Scientific and Natural Areas (SNAs) protect natural features of exceptional scientific or educational value including native plant communities, rare species, and significant geological features. Enjoy the undisturbed natural quality of these sites. Most SNAs do not have trails, and none have restrooms or drinking water. While SNAs do not allow camping, vehicles, or collecting plants and animals, SNAs do allow birding and wildlife watching, hiking, photography, snowshoeing, and cross-country skiing. There are seven SNAs in the area: Gustafson's Camp, Luxemburg Peatland, Mulligan Lake Peatland, Norris Camp Peatland, Pine and Curry Islands, Red Lake Peatland, and Winter Road Lake Peatland. [mndnr.gov/snas](https://mndnr.gov/snas)

### SNA HIGHLIGHT: RED LAKE PEATLAND

With more than 84,000 acres and stretching 50 miles in length, this SNA is the largest, most diverse peatland in the United States. All the peatlands in the area are on flat and continuously saturated land, with interesting teardrop-shaped islands of black spruce and tamarack. Part of the area is a designated National Natural Landmark, providing habitat for hawk owls, short-eared owls, great gray owls, and yellow rails. Rare sedges, sundews, and mountain yellow-eyed grass can also be found. Trails used by caribou in their migration to Canada's calving grounds can still be seen, though the last migration took place in the 1930s.

### SNA HIGHLIGHTS: GUSTAFSON'S CAMP

This 185-acre SNA takes its name from an old logging camp that once thrived in the area. While old-growth red and white pine are most noticeable, the surrounding aspen forest and white cedar swamp are also of key ecological interest. It features a variety of orchids, such as the calypso orchid, fairy lady-slipper, and the rare ram's head lady slipper. Trees and shrubs such as mountain maple, red and white pine, quaking aspen, blueberry, and chokecherry are also found. In 1995 a 1.4-acre fenced deer enclosure was erected for researchers interested in documenting browsing effects by deer and other herbivores.

## NEARBY RECREATION

### GAME REFUGES

Game refuges are designated to provide areas for wildlife, especially migratory waterfowl, to breed, nest, feed, and rest. These refuges consist of a mix of private and public land, and hunting and trapping is restricted.

### BIG BOG STATE RECREATION AREA

The northern unit of this recreation area near the southeast border of the state forest features a mile-long boardwalk through part of the largest peat bog in the lower 48 states. Visitors can get a first-hand look up close at the unique plants and animals of this rare resource. The southern unit is located on the eastern shore of Upper Red Lake just north of Wakish and offers camping, sandy beach, and great fishing.

### HAYES LAKE STATE PARK

Located west of the state forest, this park offers swimming, canoeing, camping, wildlife and bird watching, a bog boardwalk, and scenic views at Grefthen Bay. Hayes Lake is completely within state park boundaries, and motor use on the lake is restricted to electric motors only.

### ZIPPSEL BAY STATE PARK

Located on Lake of the Woods, one of the world's largest and most dramatic lakes, this park offers camping, swimming, boating, and fishing. Birding is excellent. Winter visitors can use miles of cross-country ski trails.

## RESPECT PRIVATE PROPERTY

State forests contain private and tribal land within their boundaries, so know where you are. Watch for posted "No Trespassing" and "No Hunting" signs and stay off private property.

You must have permission before entering tribal or posted private land, even to cross it to access public land.

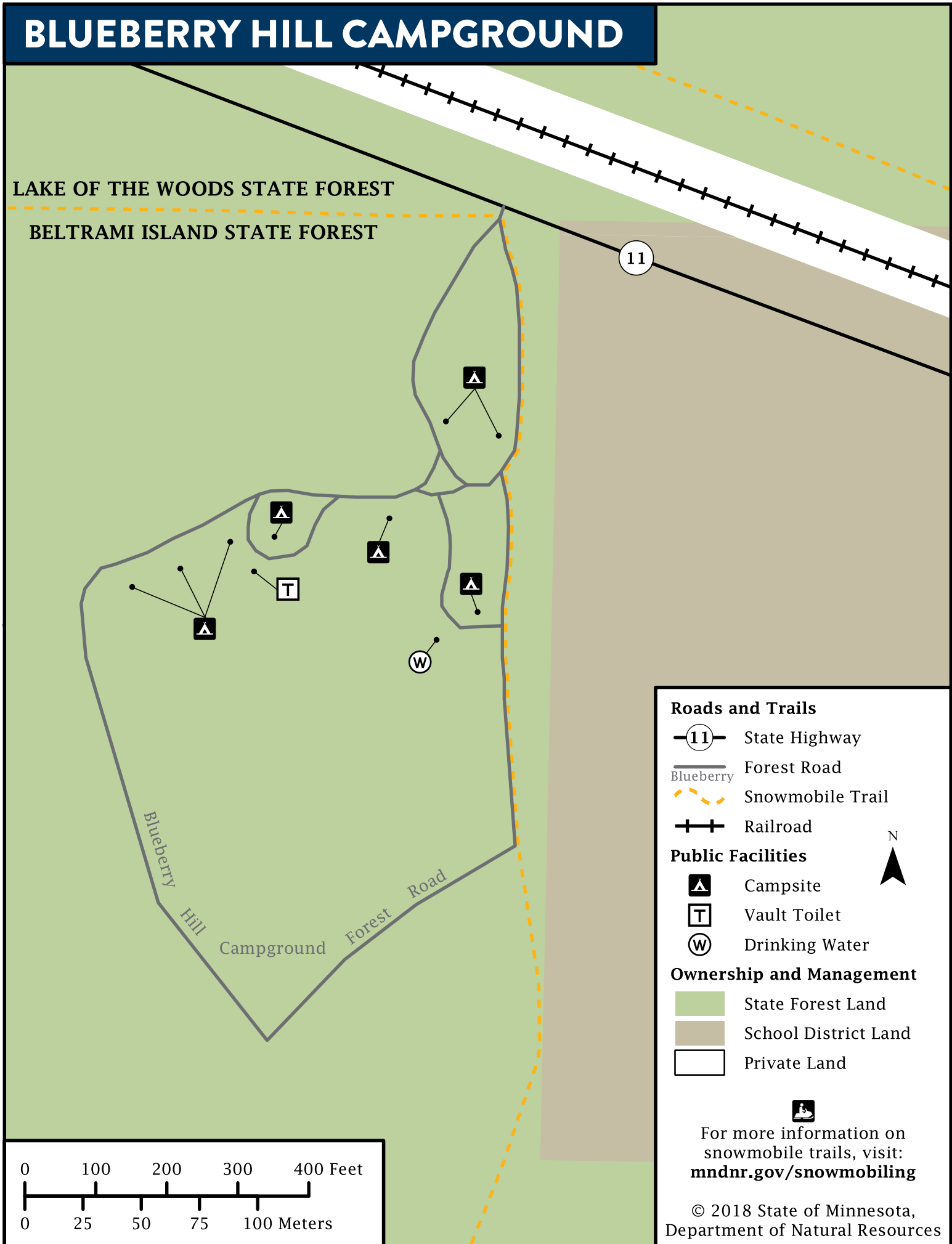
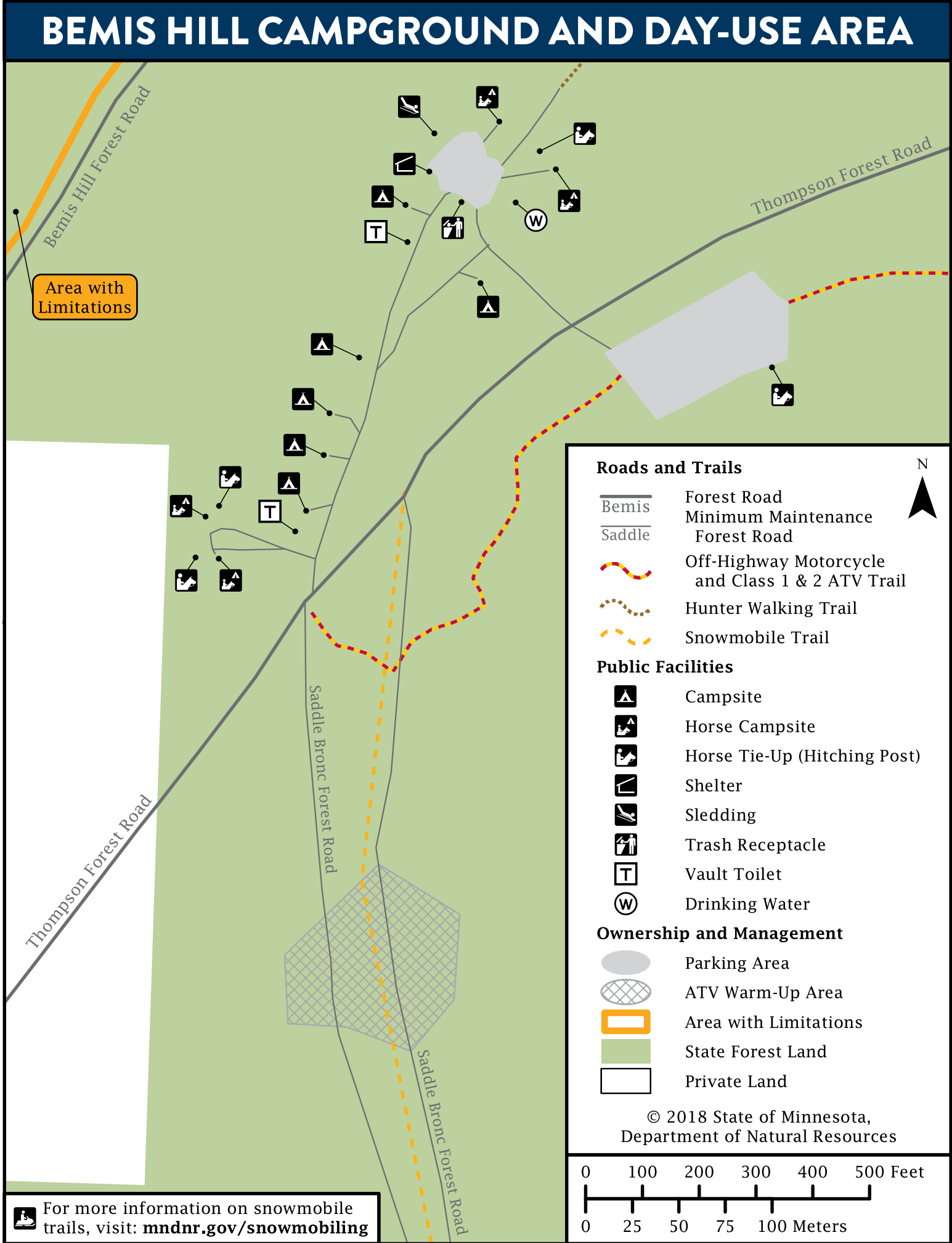
Trespassing is a misdemeanor. If convicted, you could lose your license to hunt. All conservation and peace officers enforce trespass laws.

### TRAIL ETIQUETTE

All trails are open to hiking, biking, horseback riding, and snowmobiling unless posted closed for that use. All trail users should yield to horses. Horses may be spooked by quiet bikers or hikers, so make sure to let them know you are approaching or passing.



SCAN TO  
DOWNLOAD MAP



## ALWAYS STAY ON SIGNED TRAILS

Whether you're riding or walking, tread lightly on the land. Be courteous to others, respect private property, and obey the law.

## AREAS WITH LIMITATIONS

These areas are designated to protect unique natural resources and provide other non-motorized recreation opportunities. Motorized vehicles may not operate within "Areas With Limitations" for any reason.

## LEAVE TROUBLE BEHIND

Help prevent the spread of invasive plants and animals.

- Clean your gear before entering and leaving the recreation site.
- Remove mud and seeds from clothes, pets, boots, gear, and vehicles.
- Stay on designated trails.
- [PlayCleanGo.org](https://www.playcleango.org)

## CLEAN IN CLEAN OUT

Avoid spreading invasive organisms such as zebra mussel larvae or spiny waterfleas by not transporting lake or river water, including in bait buckets. Dispose of in trash or pack out unused bait and live worms where they can't reach water or soil.

[mndnr.gov/invasives/ais](https://mndnr.gov/invasives/ais)



**BELTRAMI ISLAND STATE FOREST MAP**

DEPARTMENT OF NATURAL RESOURCES

## FOR MORE INFORMATION

Minnesota Department of Natural Resources  
info.dnr@state.mn.us  
651-296-6157 | 888-646-6367  
TDD (Telecommunications Device for the Deaf)  
651-296-5484 | 800-657-3929

**DNR TIP LINE 800-652-9093**  
(Turn in Poachers)

## EMERGENCY SERVICE—DIAL 911

**BELTRAMI COUNTY SHERIFF**  
218-333-9111

**LAKE OF THE WOODS COUNTY SHERIFF**  
218-634-4570

**ROSEAU COUNTY SHERIFF**  
218-634-1421

**NEAREST HOSPITAL SERVICES**  
St. Joseph's Hospital  
600 Pleasant Avenue  
Park Rapids, MN 56470  
218-732-3311

LifeCare Medical Center  
Roseau  
218-463-2500

Sanford Health Center Emergency Room  
Thief River Falls  
218-681-4240

FORESTRY  
500 Lafayette Road, St. Paul, MN 55155  
888-646-6367  
[mndnr.gov](https://mndnr.gov)



MAP AND GUIDE