

AN EVALUATION OF SURFICIAL GEOLOGY AND PEAT RESOURCES

S.W. St. Louis County, Minnesota
By Morris T. Eng

Legend: Surficial Geology

- D

Drumlin — An elongated landform pattern constructed of bouldery yellowish-brown to dark reddish-brown till of the Rainy Lobe.
- EM-R

End Moraine of red colored sandy till deposited by the Superior Lobe.
- GM-R

Ground Moraine of the Superior Lobe composed of reddish-brown sandy till.
- MO-G/R

Moraine overlap where the St. Louis Sublobe has overridden and blended its gray till with older red tills. Contains end moraines of variably colored dark to reddish brown calcareous till deposited over sandy red tills of the Superior and Rainy Lobes.
- GM-G

Ground Moraine of the St. Louis Sublobe composed of light buff to brownish-red calcareous till.
- GM-L

Ground Moraine of the St. Louis Sublobe that is lakewashed.
- AM-L

Ablation Moraine — Lakewashed stagnant ice features deposited by the St. Louis Sublobe containing a complex pattern of landforms and channels. Contains variably colored buff to brown calcareous till and alluvial soils.
- OS-S

Off Shore Sand — shallow deposits of fine sand deposited by the St. Louis Sublobe into the littoral zone of glacial Lake Upham. Later reworked by wind during a low water phase.
- LBS

Lake Bottom Sediments of glacial Lake Upham containing fine grained laminated soils of silt, clay and fine sand.
- AL

Undifferentiated alluvial soils deposited by post glacial streams.
- SAND AND GRAVEL DEPOSITS

K

Kame - a prominent hill or series of hills of sand and gravel deposited by water flowing into crevasses or holes in the ice near the front of the glacier. Complex deposits are not outlined.
- E


Esker - a ridge of sand and gravel deposited in the channel of former glacial streams flowing within or under the ice.
- IC


Undifferentiated ice contact gravel deposits, or denotes ice contact slope.
- GO


Glacial Outwash - a broad plain of sand and gravel usually deposited by several coexistent meltwater streams which have transported gravel some distance beyond the front of the glacier.
- T


Terrace formed by downcutting of existing streams through glacial valley train deposits of sand, gravel or glacial till.
- B


Shoreline Beach deposits of glacial Lake Upham. Usually contains shallow deposits of sand and gravel.
- PEAT DEPOSITS

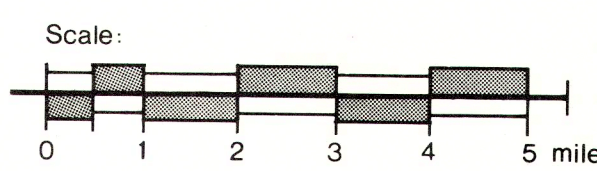
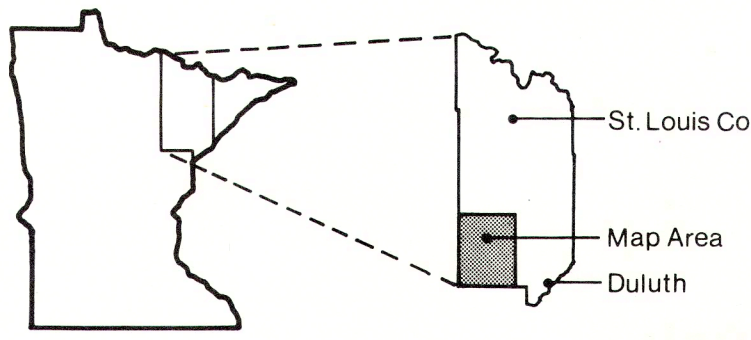
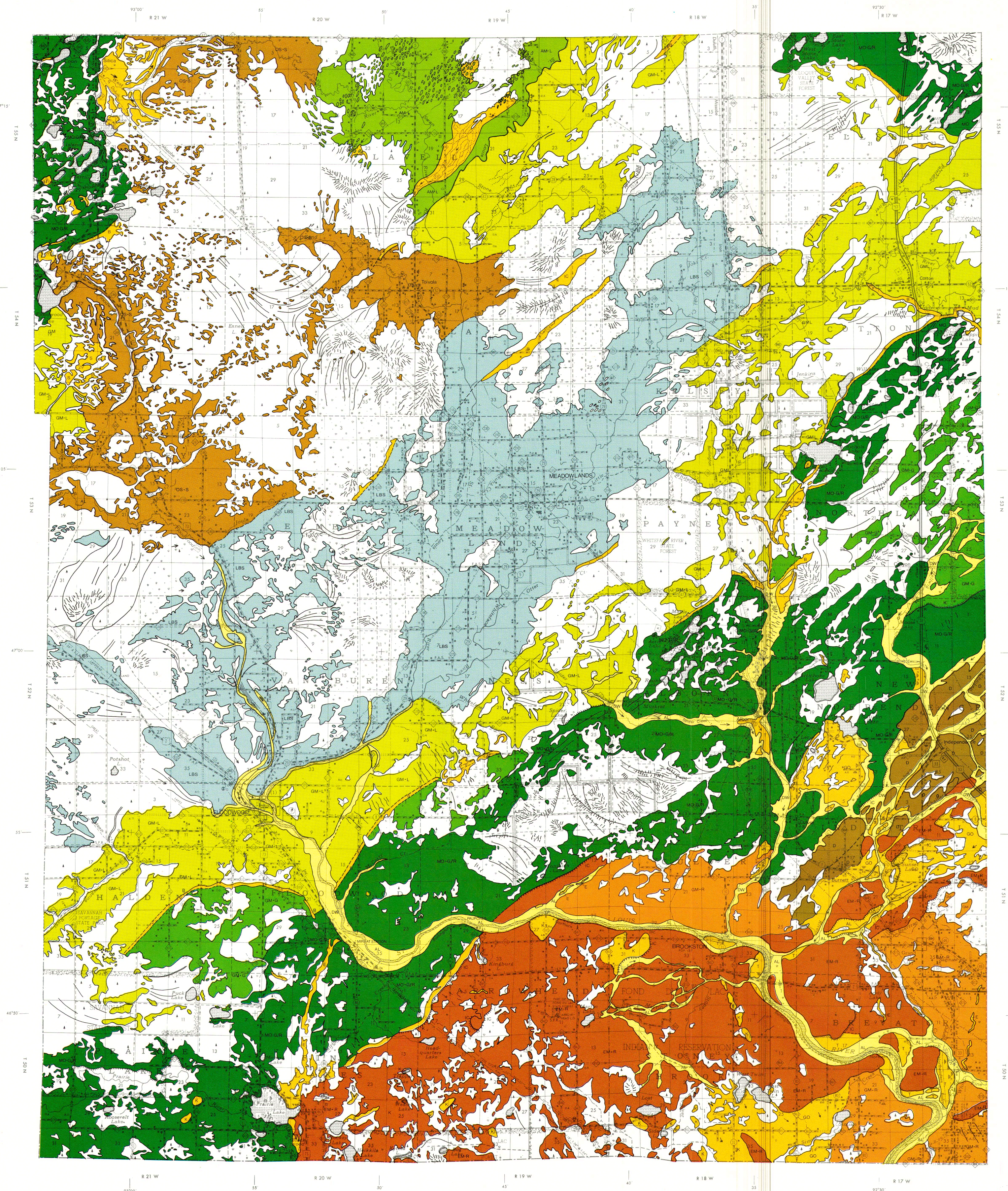
 Raised bog pattern formed by lines of black spruce radiating outward from a central point. Representative of sphagnum peat deposits and local watershed divides in a bog.

 Ribbed fen pattern caused by the selective growth of trees and grasses on a peat bog. Reflects the path of drainage from the bog to local streams. Usually contains reed-sedge peat.

 A heavily forested bog usually of black spruce, tamarack, or white cedar. Contains reed-sedge or woody-fibrous peat.

 Trace of a wave cut shoreline or an indistinct boundary.

 Trace of a braided stream channel system.



Production Assistance & Cartography
Minnesota Department of Natural Resources
Bureau of Engineering

Produced by
Minnesota Department of Natural Resources
Division of Minerals,
Box 45
Centennial Office Building
St. Paul, Minnesota 55155

