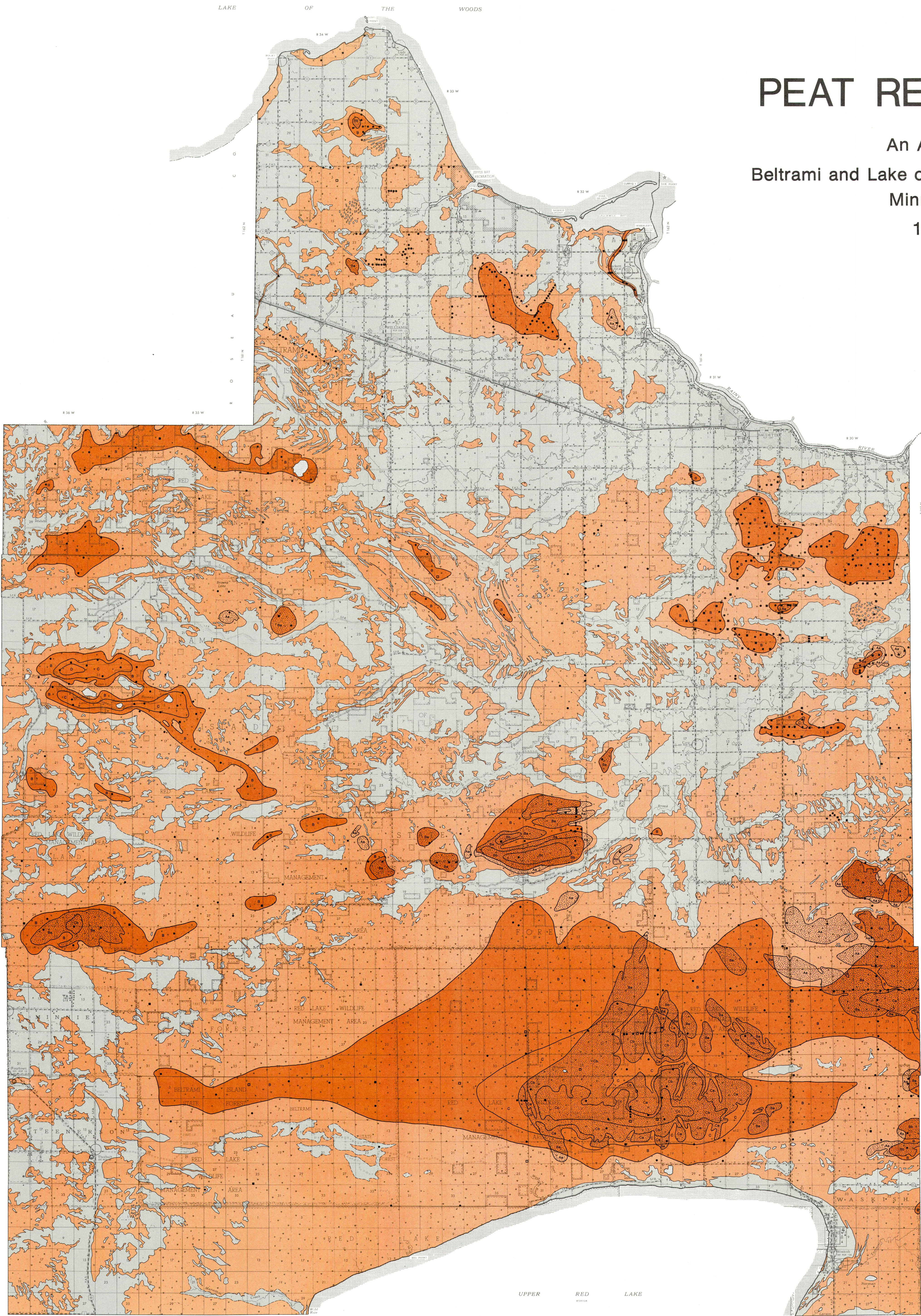


# PEAT RESOURCES

An Area of  
Beltrami and Lake of the Woods Counties,  
Minnesota  
1982



## PEAT AND MINERAL UNITS

- Peat greater than 150 cm deep
- Peat less than 150 cm deep
- Raised bog (fibric sphagnum moss cap)
- Mineral soil
- Indistinct peat/mineral boundary

## LABELS FOR DEPTH AND TYPE OF PEAT

### TOTAL DEPTH OF PEAT

- A 0-150 cm (~ 0- 5 ft)
- B 151-300 cm (~ 5-10 ft)
- C 301-450 cm (~ 10-15 ft)
- D 451-600 cm (~ 15-20 ft)

Total depth is hemic peat when label is an upper-case letter only.

### DEPTH OF FIBRIC SPHAGNUM MOSS LAYER

- a 20- 60 cm (~ 1- 2 ft)
- b 61-150 cm (~ 2- 5 ft)
- c 151-300 cm (~ 5-10 ft)

### DEPTH OF SAPRIC PEAT

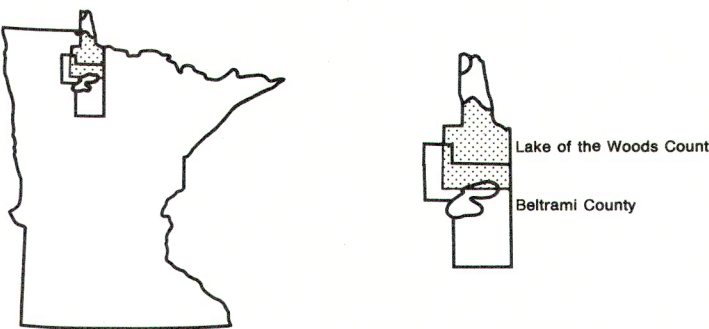
- x Total depth is sapric peat

### FORMS USED FOR PEAT LABELS

- The "A" unit is indicated by color only; total depth (0-150 cm) is hemic peat.
- Units labeled with an upper-case letter only (e.g., B, C, or D) indicate that the total depth is hemic peat.
- The total depth A (0-150 cm) consists of sapric peat.
- The total depth of peat (e.g., A 0-150 cm) includes a layer of fibric sphagnum moss peat (e.g., a 20-60 cm deep) overlying hemic peat.

## PEAT OBSERVATION SITES

- Observation site.
- Sample site with laboratory data.
- Sample site with additional DOE laboratory data.



0 1 2 3 4 5 Miles  
0 1 2 3 4 5 Kilometers