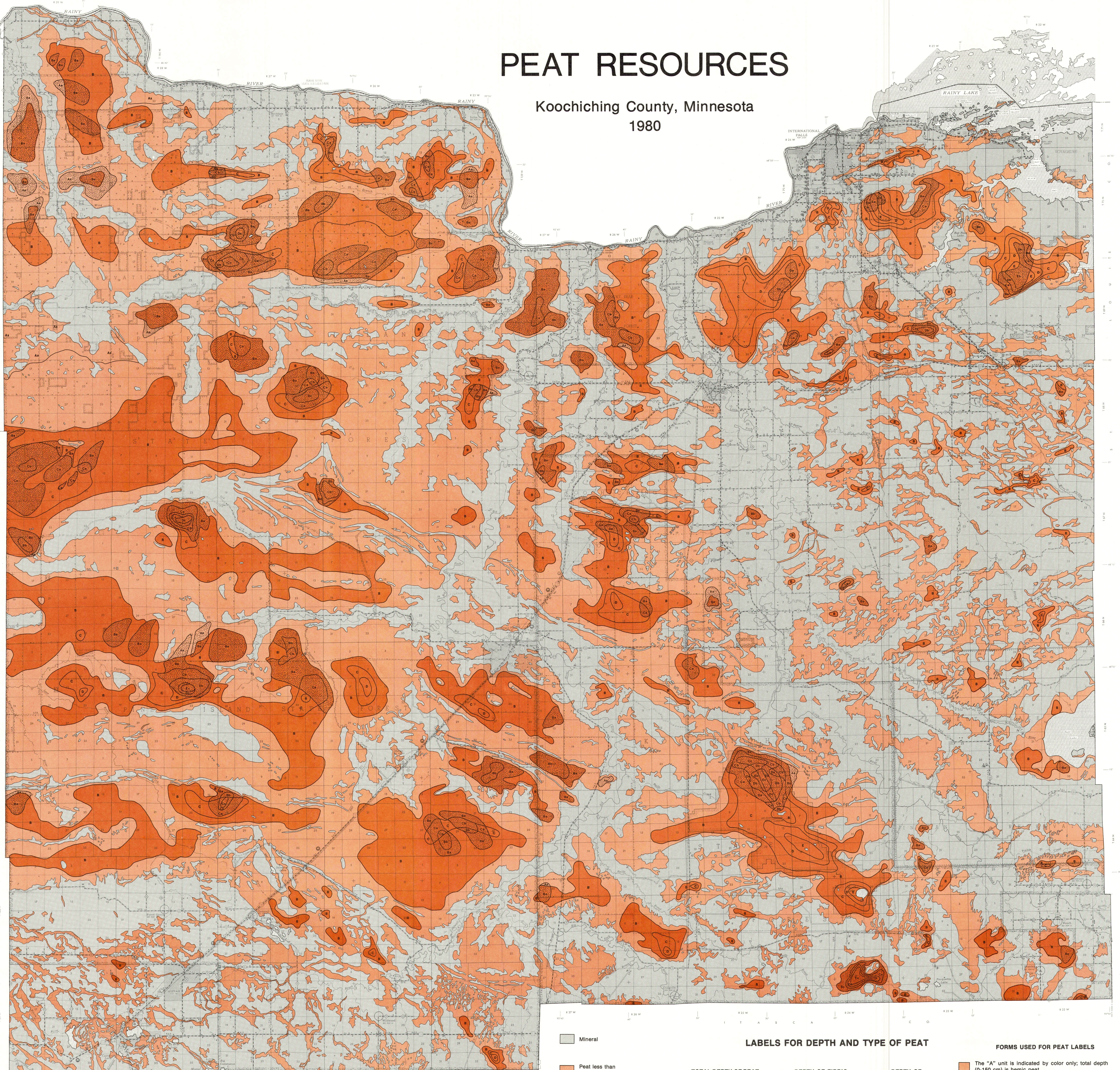


PEAT RESOURCES

Koochiching County, Minnesota
1980



Mineral

Peat less than
150 cm deep

Peat greater than
150 cm deep

Raised bog (fibric
sphagnum moss "cap")

LABELS FOR DEPTH AND TYPE OF PEAT

TOTAL DEPTH OF PEAT

A 0-150 cm (~ 0- 5 ft)
B 151-300 cm (~ 5-10 ft)
C 301-450 cm (~ 10-15 ft)
D 451-600 cm (~ 15-20 ft)
E 601-750 cm (~ 20-25 ft)

Total depth is hemic peat
when label is an upper-case
letter only.

DEPTH OF FIBRIC SPHAGNUM MOSS LAYER

a 20- 60 cm (~ 1-2 ft)
b 61-150 cm (~ 2-5 ft)
c 151-300 cm (~ 5-10 ft)

DEPTH OF SAPRIC PEAT

x Total depth is
sapric peat

FORMS USED FOR PEAT LABELS

The "A" unit is indicated by color only; total depth
(0-150 cm) is hemic peat.

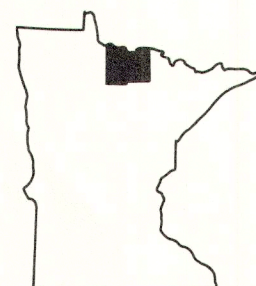
Units labeled with an upper-case letter only (e.g.,
B,C,D, or E) indicate that the total depth is hemic peat.

AX The total depth A (0-150 cm) consists of sapric peat.

The total depth of peat (e.g., A 0-150 cm) includes a
layer of fibric sphagnum moss peat (e.g., a 20-60 cm
deep) overlying hemic peat.



Minnesota Peat Inventory Project
Minnesota Department of Natural Resources
Division of Minerals



0 1 2 3 4 5 Miles
0 1 2 3 4 5 Kilometers

Base map: General Highway Map, Koochiching County, Minnesota
Minnesota Department of Transportation, 1979