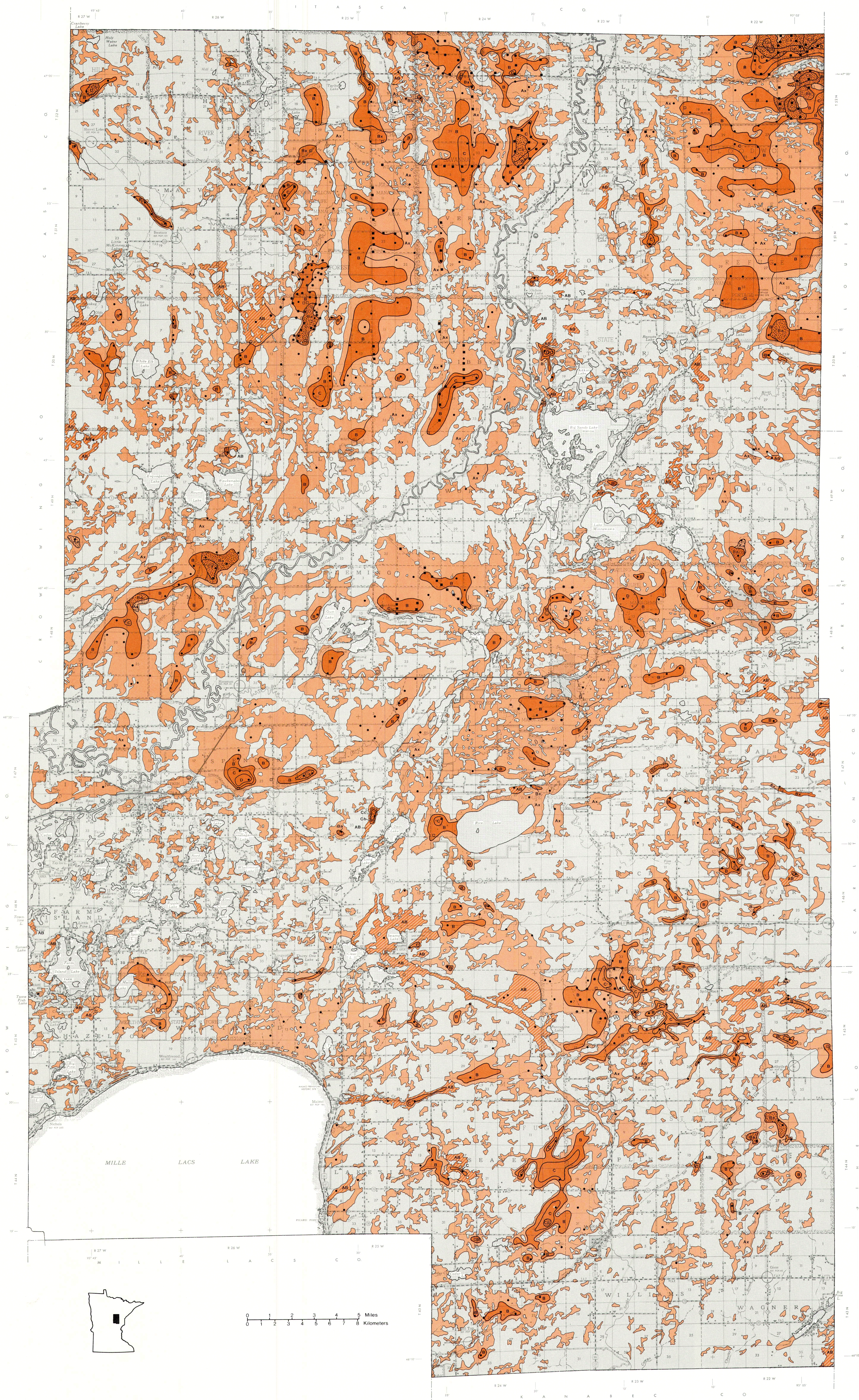


PEAT RESOURCES

Aitkin County, Minnesota

1981



PEAT AND MINERAL UNITS

- Peat less than 150 cm deep
- Peat greater than 150 cm deep
- Peat depth 0-300 cm
- Raised bog (fibric sphagnum moss "cap")
- Mineral soil

LABELS FOR DEPTH AND TYPE OF PEAT

TOTAL DEPTH OF PEAT

- | | |
|----|------------------------|
| A | 0-150 cm (~ 0- 5 ft) |
| B | 151-300 cm (~ 5-10 ft) |
| AB | 0-300 cm (~ 0-10 ft) |
| C | 301-450 cm (~10-15 ft) |
| D | 451-600 cm (~15-20 ft) |

Total depth is hemic peat when labeled with upper-case letters only.

DEPTH OF FIBRIC SPHAGNUM MOSS LAYER

- | | |
|---|-----------------------|
| a | 20- 60 cm (~1- 2 ft) |
| b | 61-150 cm (~2- 5 ft) |
| c | 151-300 cm (~5-10 ft) |

DEPTH OF SAPRIC PEAT

- | | |
|---|----------------------------|
| x | Total depth is sapric peat |
|---|----------------------------|

FORMS USED FOR PEAT LABELS

- The "A" unit is indicated by color only; total depth (0-150 cm) is hemic peat.
- Units labeled with an upper-case letter only (e.g., B, C, or D) indicate that the total depth is hemic peat.
- The total depth A (0-150 cm) or B (151-300 cm) consists of sapric peat.
- The total depth of peat (e.g., B 151-300 cm) includes a layer of fibric sphagnum moss peat (e.g., a 20-60 cm deep) overlying hemic peat.
- Units labeled AB indicate that the depth ranges from 0-300 cm of hemic peat.

PEAT OBSERVATION SITES

- DNR observation site.
- DNR sample site with laboratory data.
- DNR sample site with additional DOE laboratory data.
- IRRRB (Iron Range Resources and Rehabilitation Board) site.

Minnesota Peat Inventory Project
Minnesota Department of Natural Resources
Division of Minerals