

# Inventory of Publicly Owned Stockpiles and Natural Aggregate Resources at the Former LTV Mine and Vicinity

by  
 Glenn D. Melchert  
 January 2003

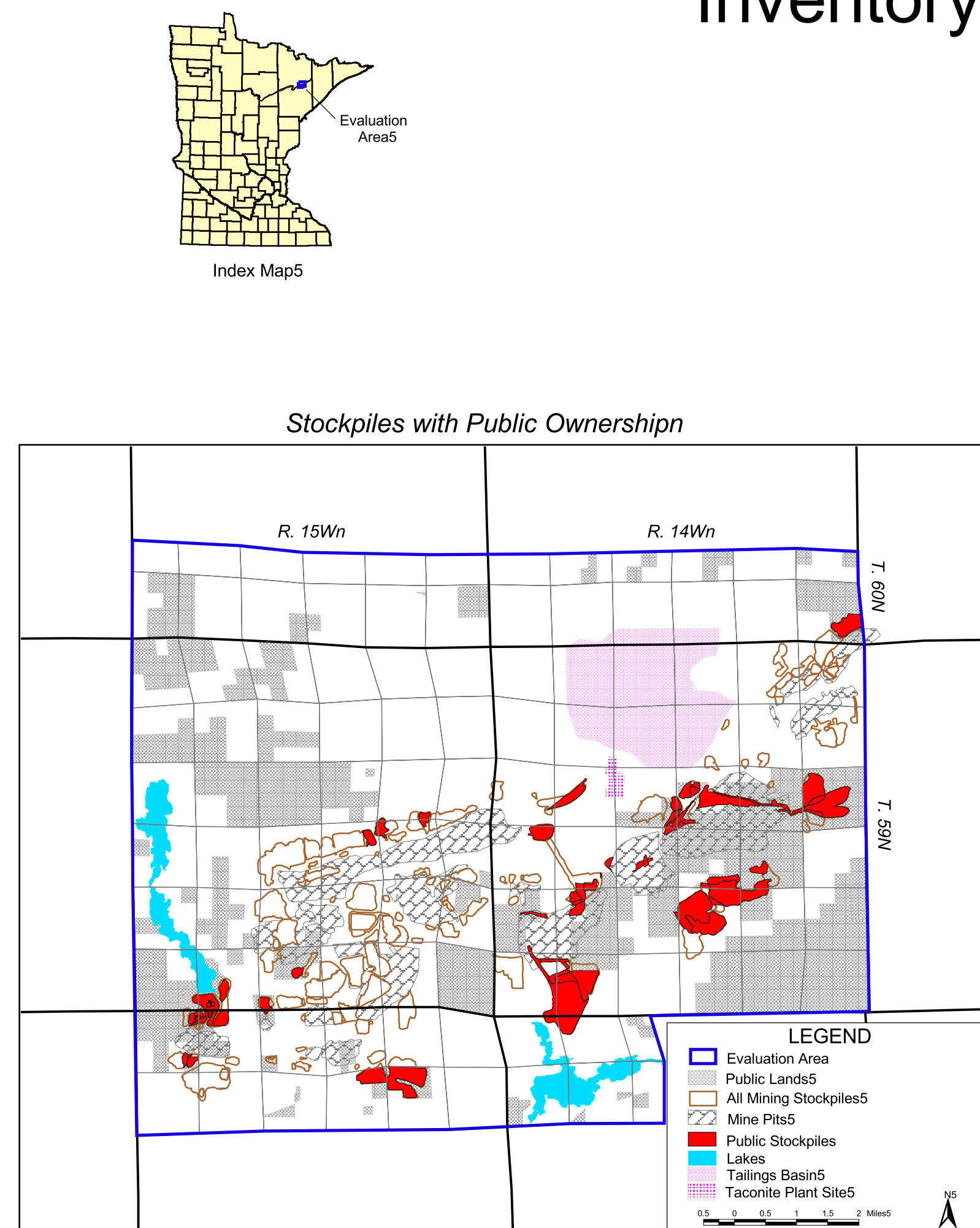


Figure 1. This index map shows all the mine pits and stockpiles in the evaluation area. The stockpiles colored red are those that are at least partially owned by a public entity, which is the State of Minnesota in virtually every case. Stockpile ownership was determined through DNR records. All public lands (surface ownership) are shown in stippled gray.

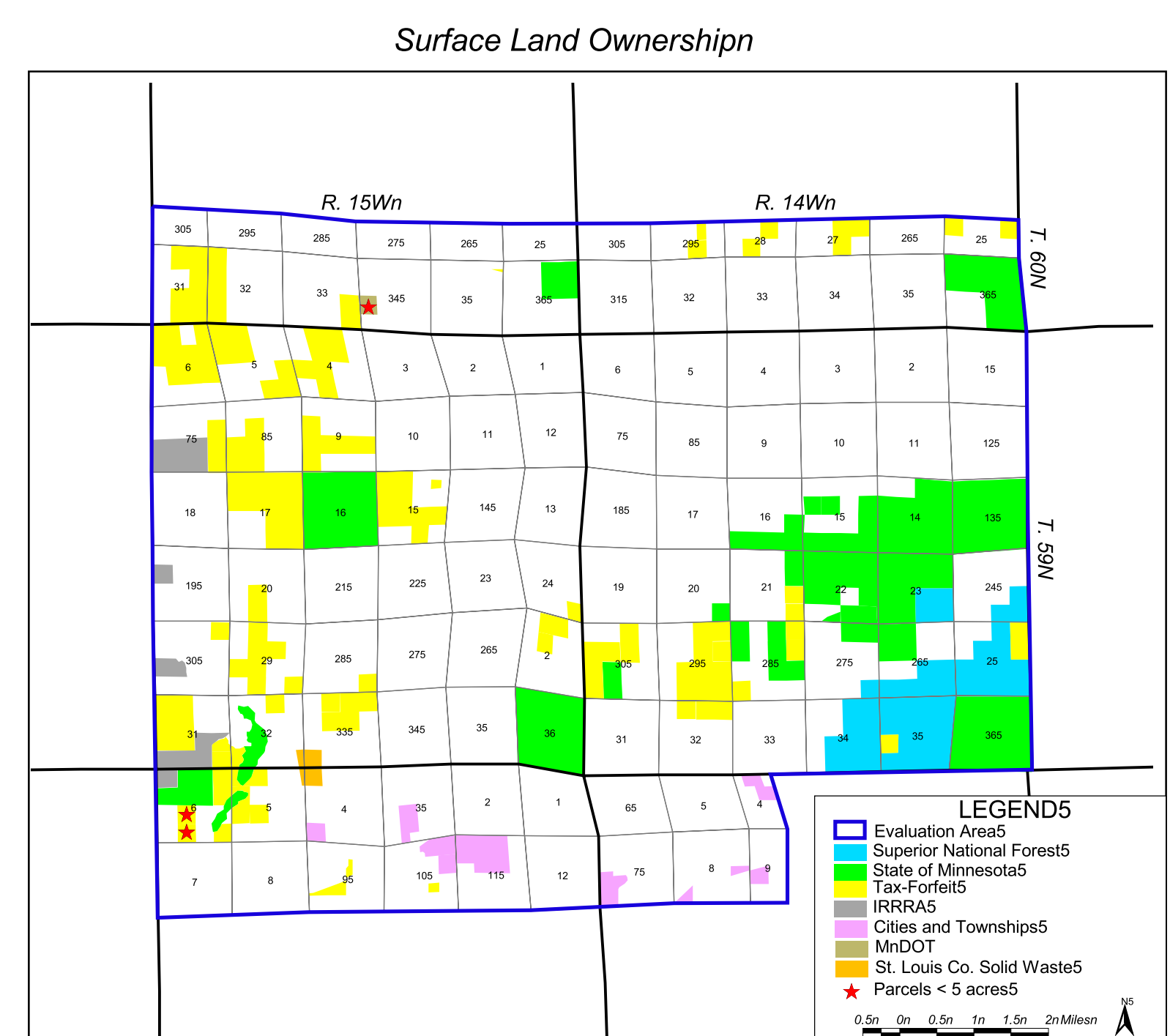


Figure 2. Public land ownership within the evaluation area. Note that the map indicates surface ownership. Sources for determining ownership included the State of Minnesota's land database, the 2002 Plat Book 5 of St. Louis County (Cloud Cartographics, Inc), and information from St. Louis County. No title research was done. Mineral ownership was not addressed.

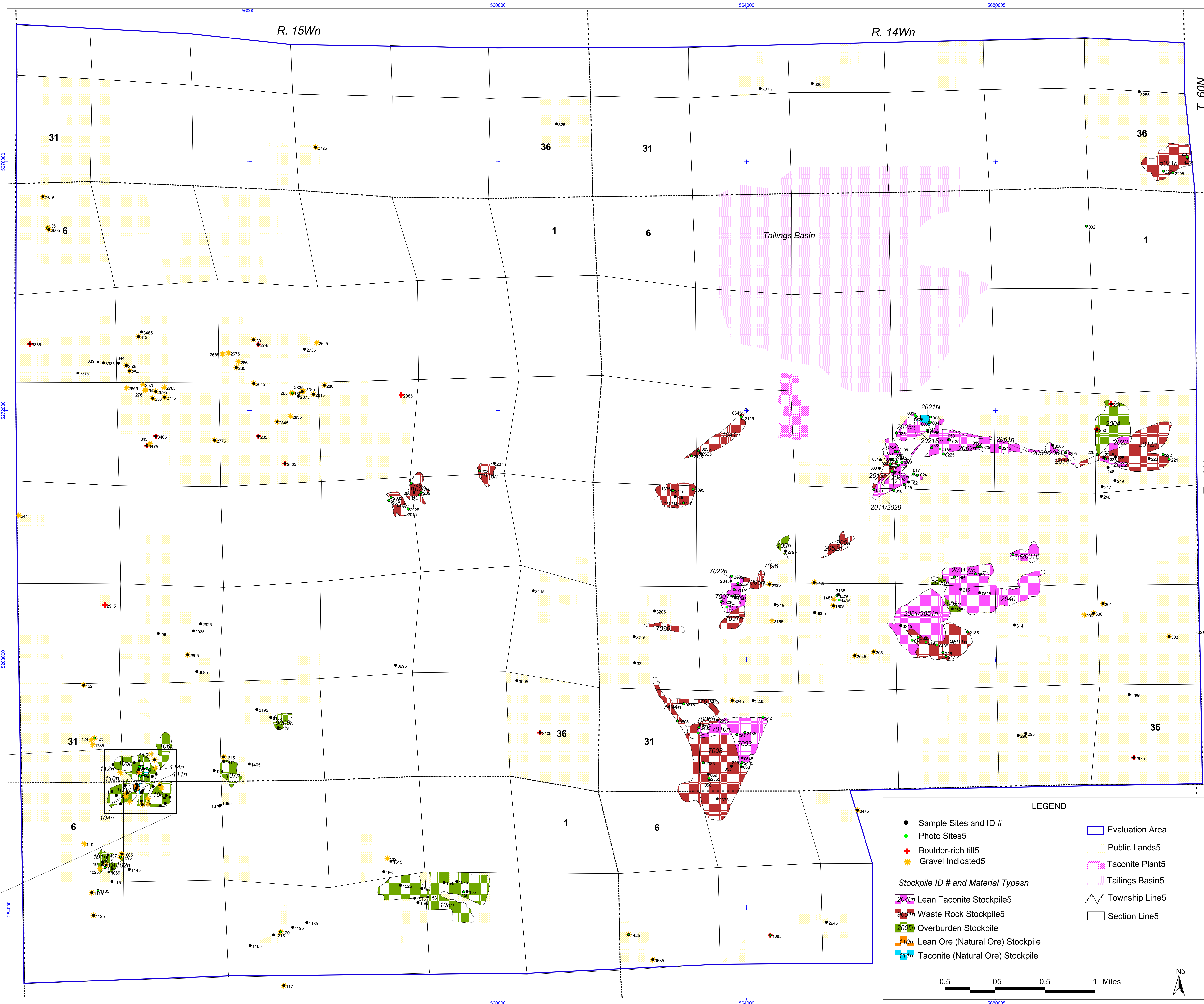


Figure 3. This basemap shows public lands, footprints of stockpiles with partial public ownership, and data sample sites. Public lands are indicated by light yellow stippling. Publicly-owned stockpiles are colored various colors to represent the type of stockpile material. Each sample site is coded to show photo sites, occurrences of natural aggregate, and concentrations of glacial boulders. The photo underlay was taken in 1991. Map coordinates along the perimeter are UTM NAD83.