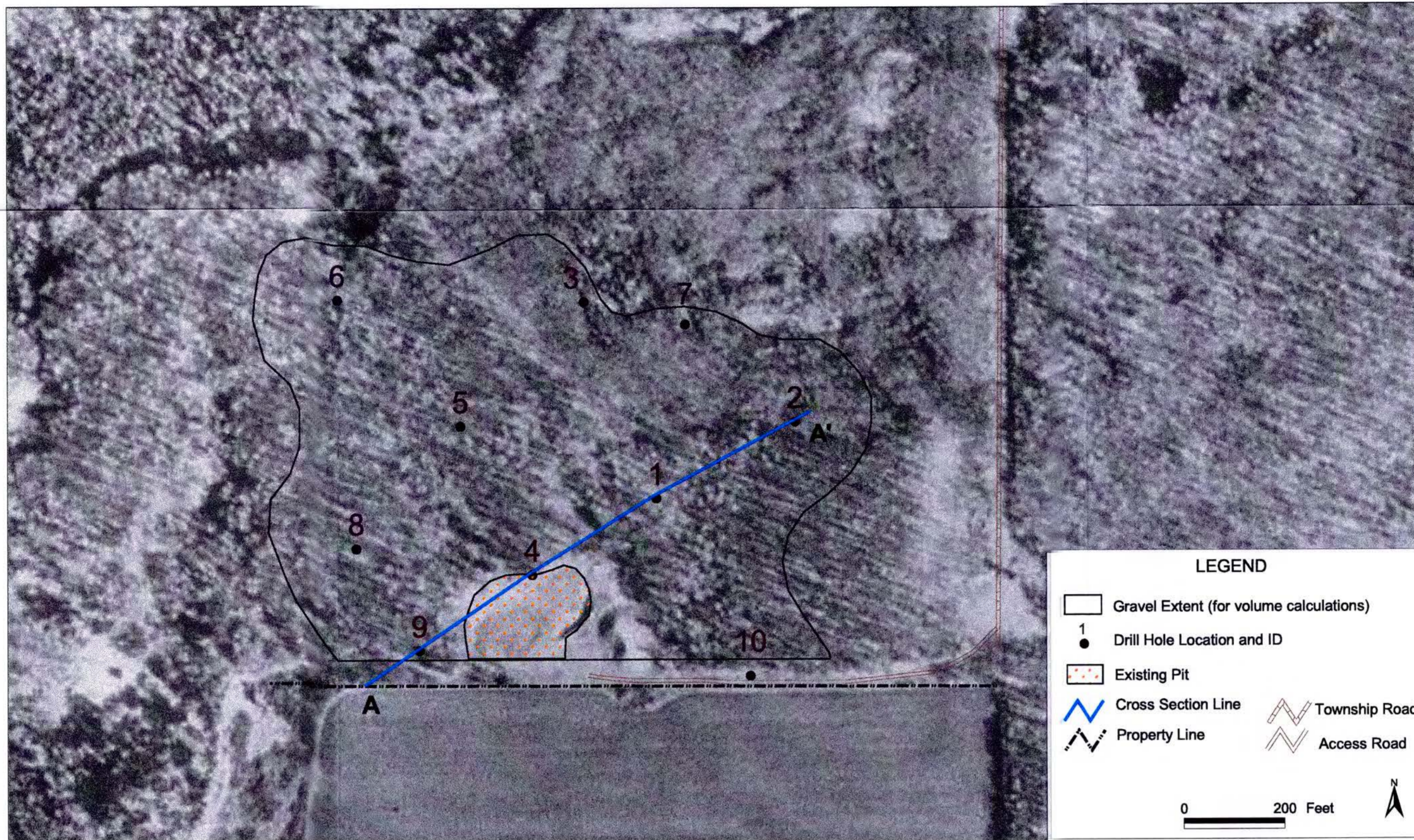




AGGREGATE RESOURCE EVALUATION OF THE OLSON AND CRANBERRY PITS IN THE MILLE LACS WILDLIFE MANAGEMENT AREA NEAR ONAMIA, MN

OLSON PIT

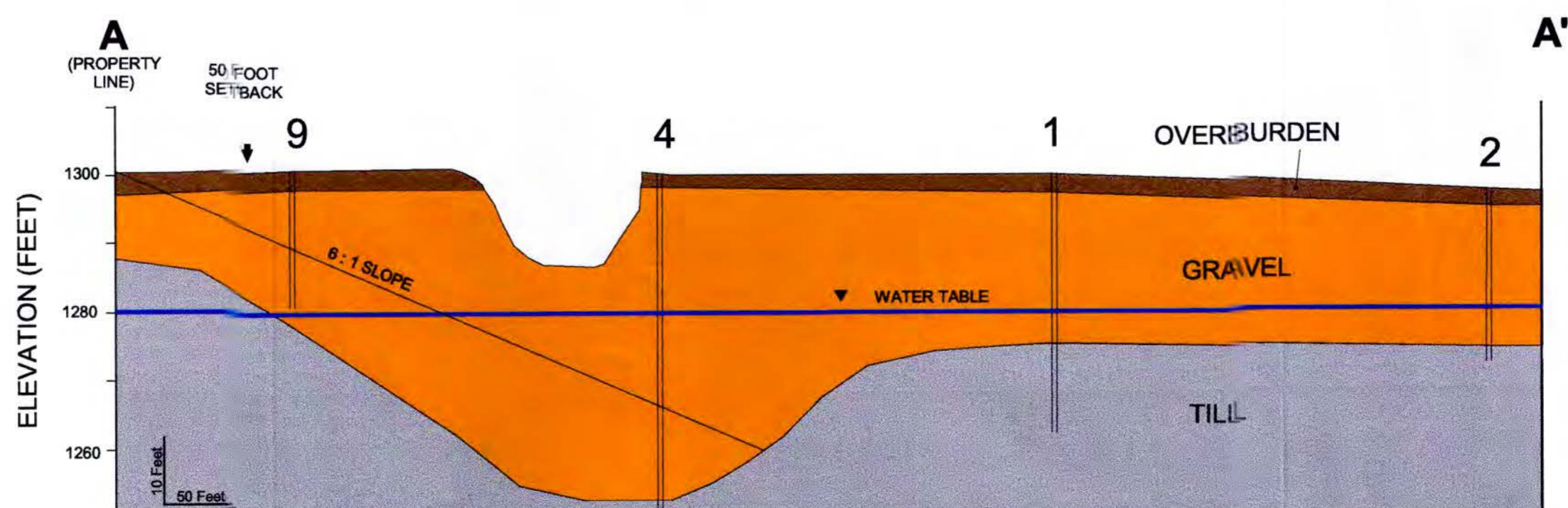


This site map shows locations of drill holes, existing pit, extent of gravel, property line, and roads. The blue line indicates the trace represented by the cross section below. The property line is approximated.



Feet of overburden, feet of gravel above and below the water table, and wetlands from the National Wetlands Inventory are displayed above. The gravel is thinner and the water table is slightly more shallow in the northeast as compared to the southwest. The overburden is generally thicker in the northern holes. Holes 9 and 10 were stopped prior to drilling through the gravel.

GEOLOGIC CROSS SECTION A - A'



This cross section shows that the gravel is widespread across the site and thickest in the vicinity of the existing pit. The overburden has a relatively consistent thickness across the site. The vertical columns represent the drill holes. Vertical exaggeration is 5 times.