

NE-SE. SEC. 22

SHENANDO

SHENANDO FALL

MAIN SHAFT

MINING L. MIT 130 S. B. PUMP SHAFT

TRUCK ROAD

SUB-STATION

4" WATER MAIN

HIGH PRESSURE STEAM

5" WATER MAIN

GARAGE (No. 1)

OFFICE

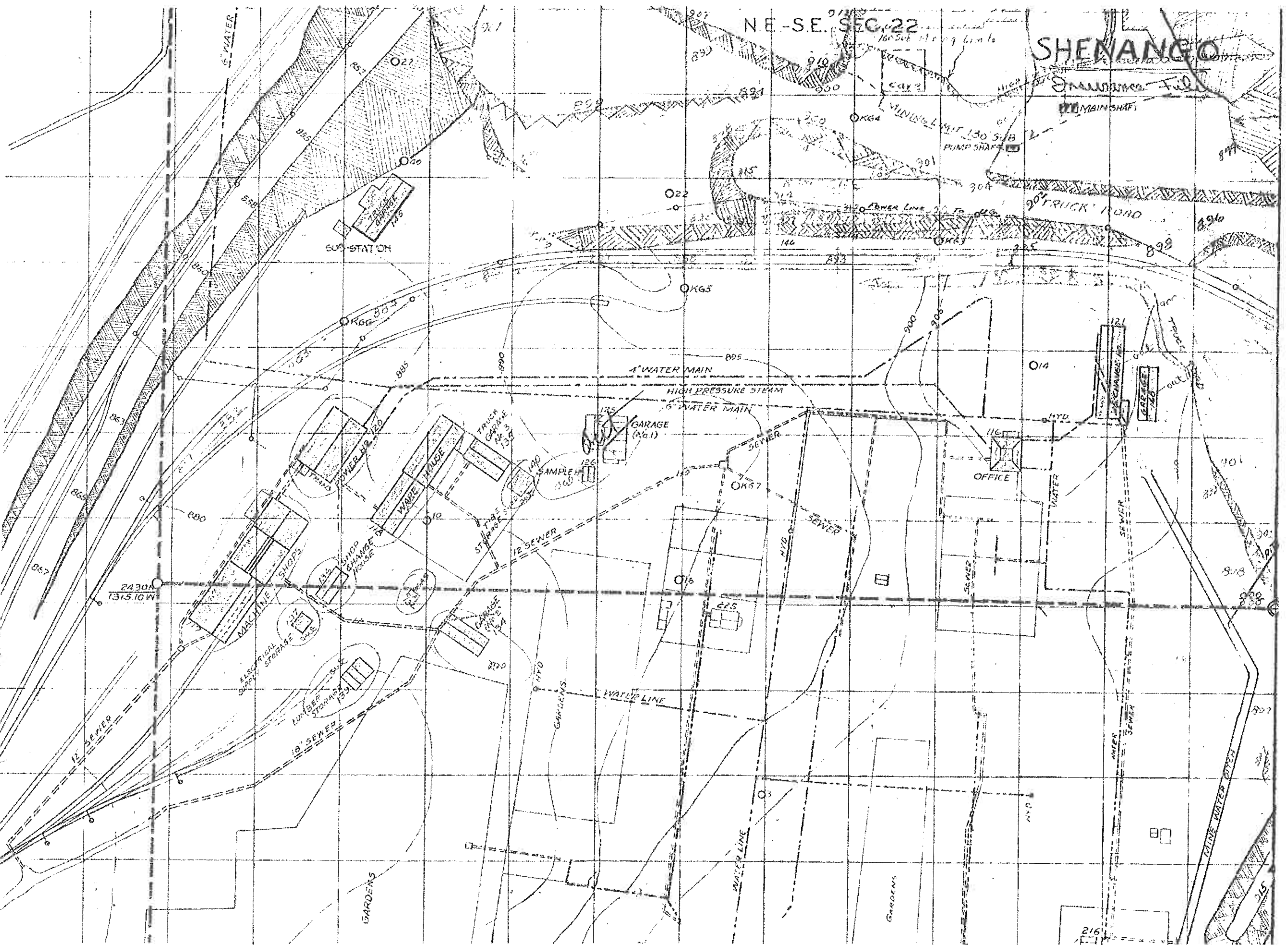
MACHINE SHOPS

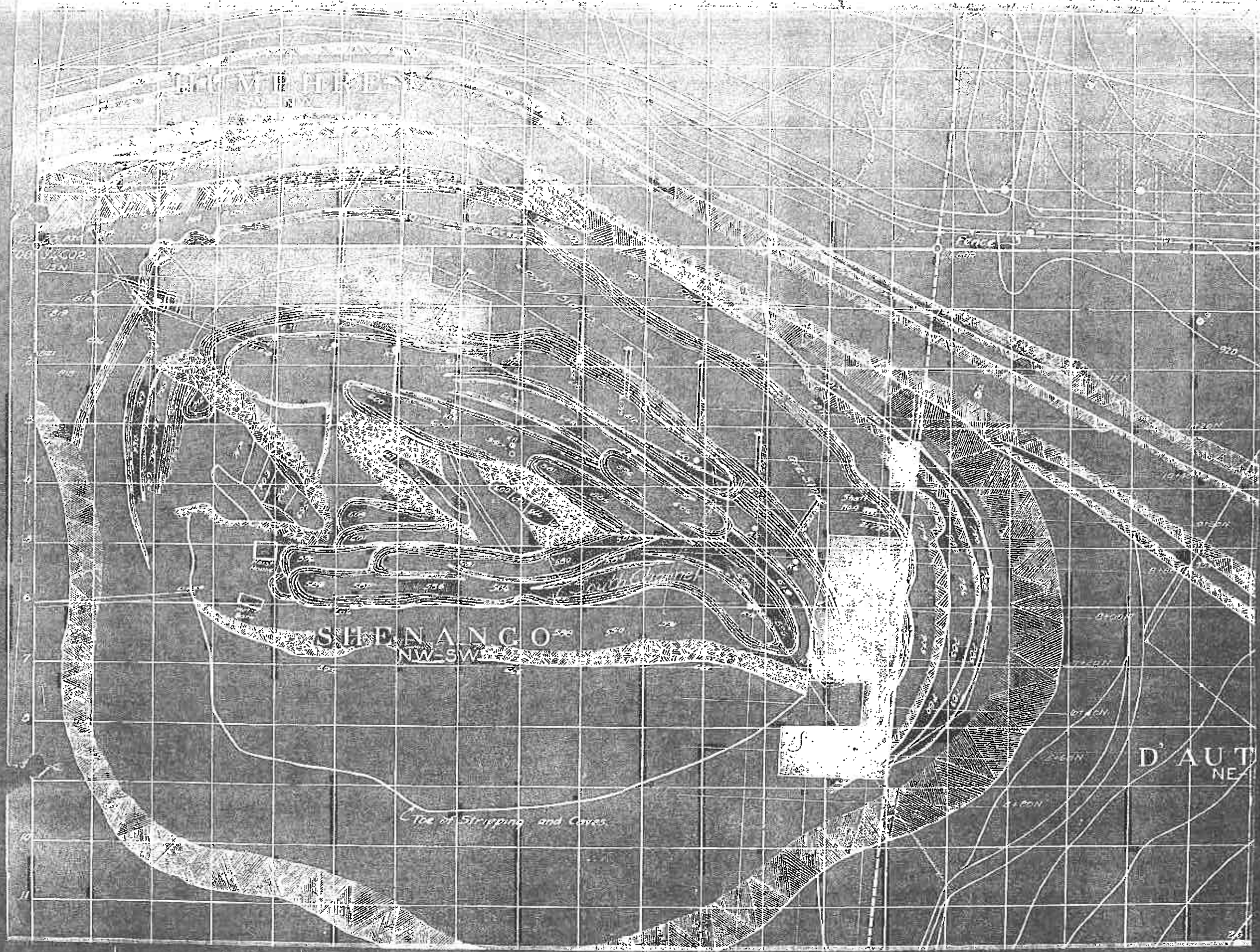
ELECTRICAL SUPPLY STORAGE

LUMBER STORAGE

GARDENS

GARDENS



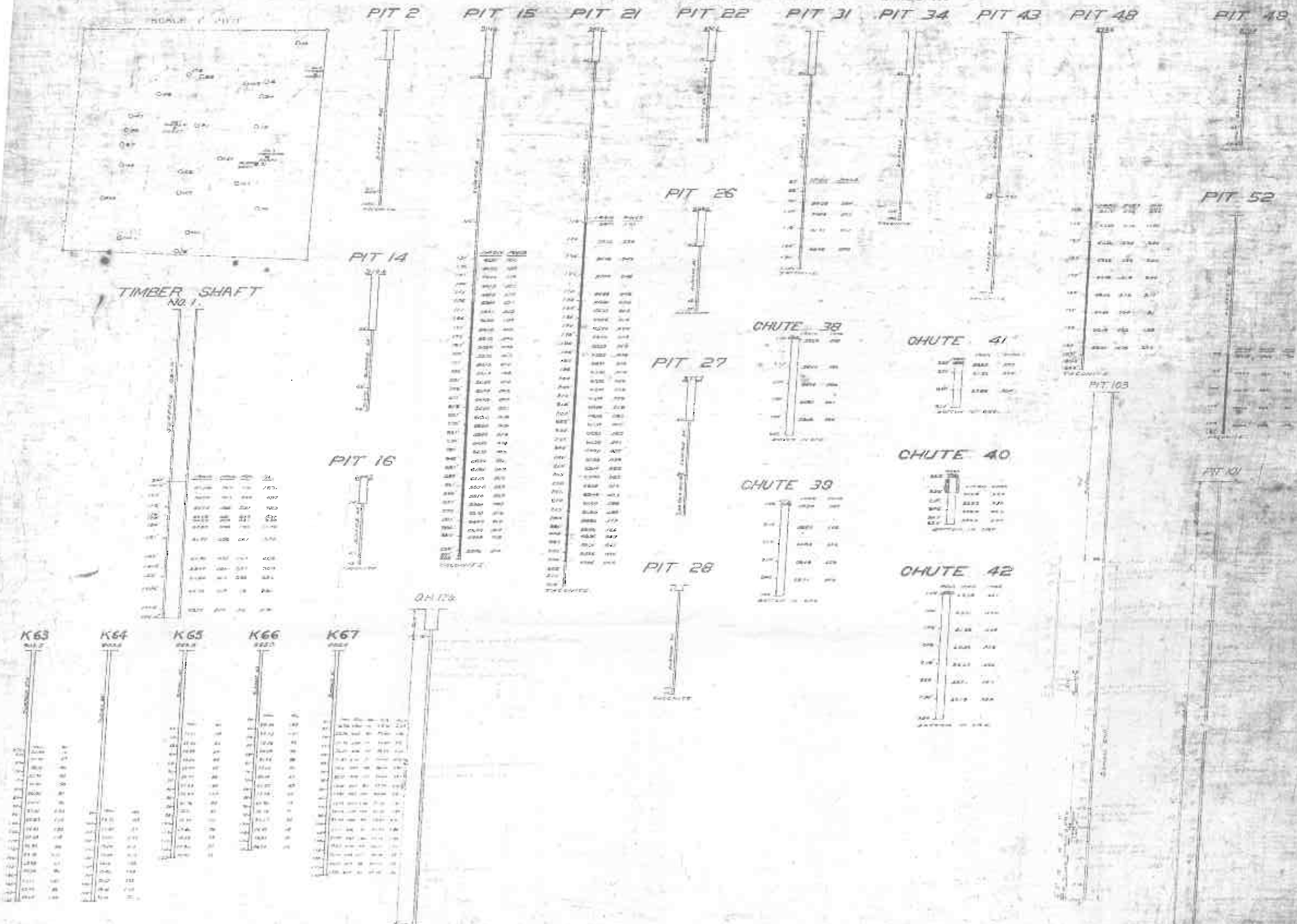


EXPLORATION ON SHENANGO PROPERTY.

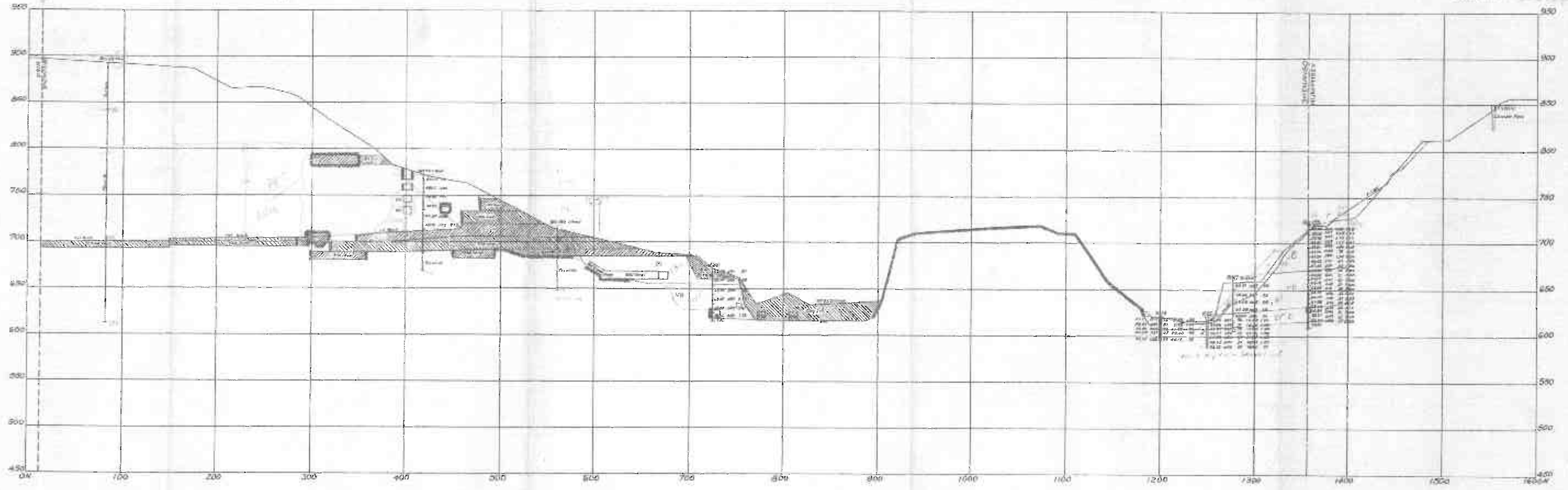
NE. SE. SEC. 22. T. 58. N. R. 20. W.



TIMBER SHAFT NO. 1

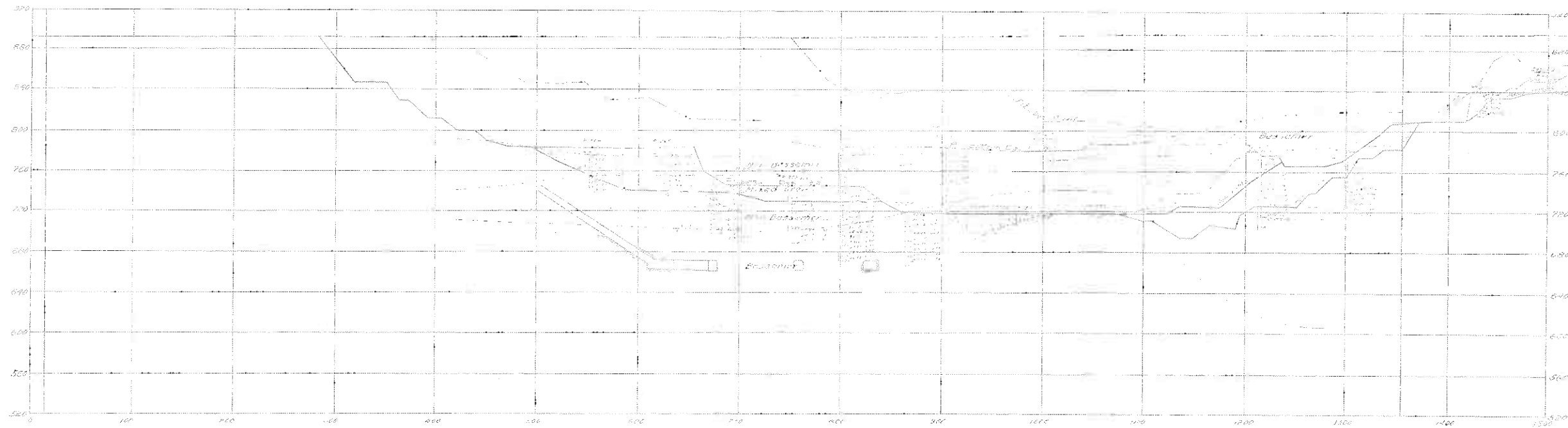


NW 1/4-SW 1/4-23-58-20
SCALE 1"=50'
JAN. 1933



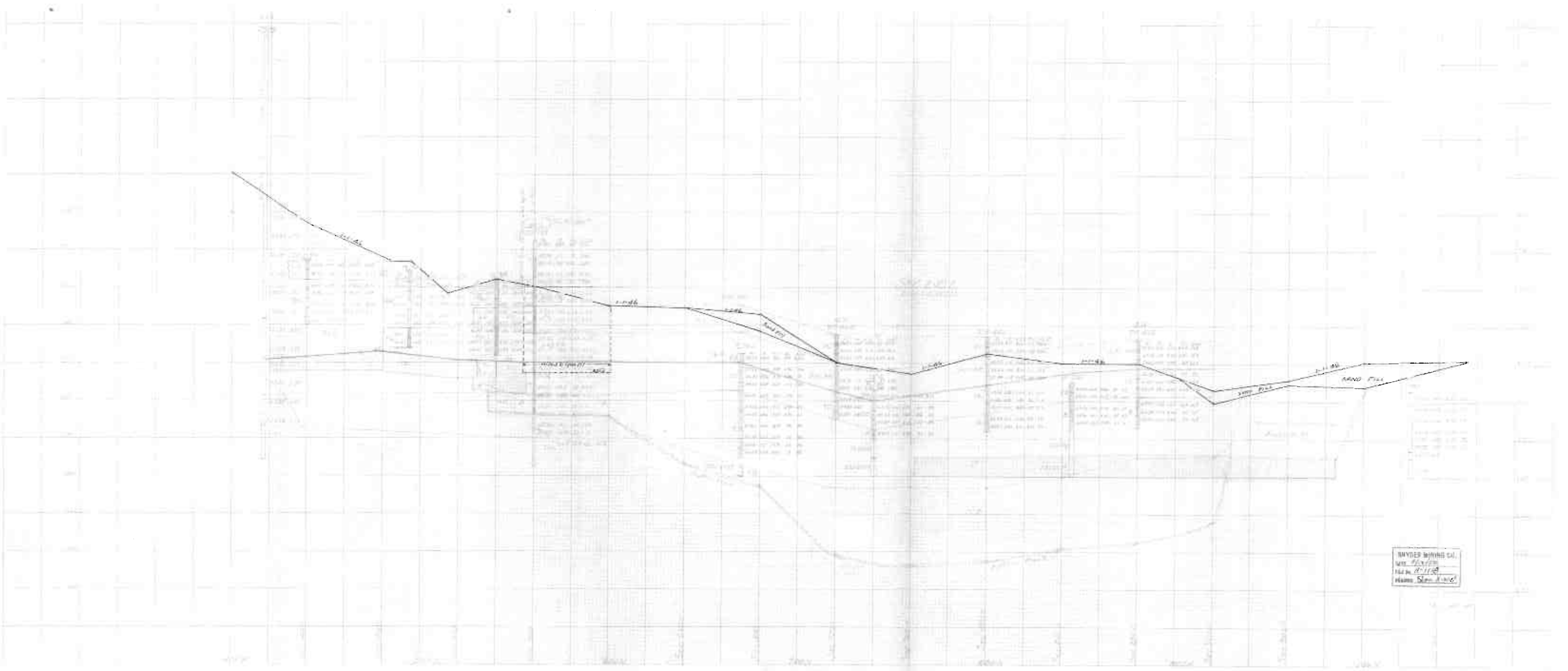
300 EAST
Facing West

THE SHENANGO FURNACE CO
HIBRING MINN.
CROSS SECTION 300 EAST
SECTION 23-50-56
JULY 1900



1450
300 EAST

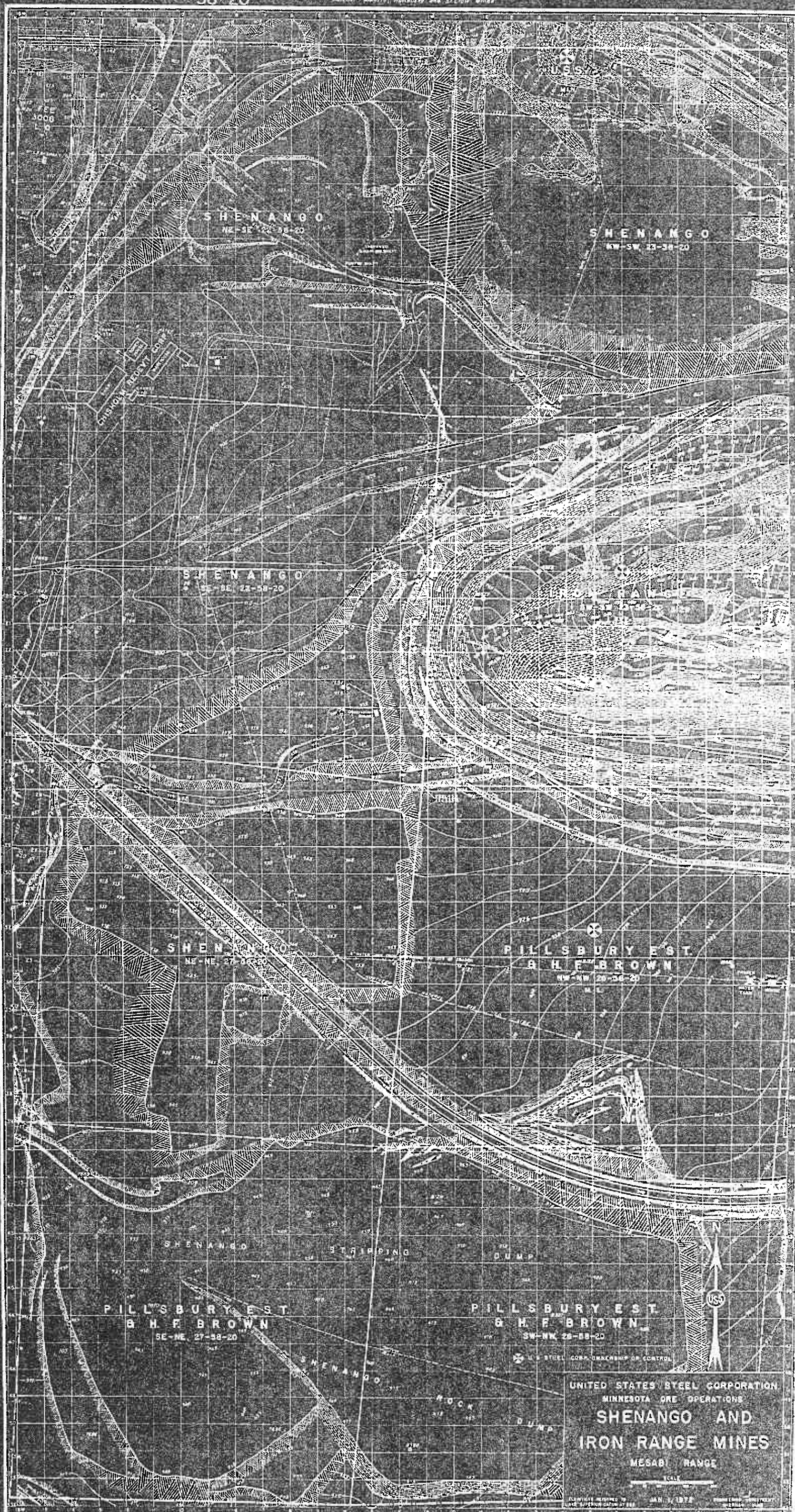
66-130
6-221
6-615B



MYDER MINING CO.
MINE SHAFT
HARD ROCK

58-20

MINNESOTA ORE OPERATIONS AND SHENANGO IRON RANGE



58-20

59-20

58-20

MINNESOTA ORE OPERATIONS AND SHENANGO IRON RANGE

JAN. 1, 1972

UNITED STATES STEEL CORPORATION
 MINNESOTA ORE OPERATIONS
**SHENANGO AND
 IRON RANGE MINES**
 MESABI RANGE

SCALE
 1" = 1 MILE

MINNESOTA ORE OPERATIONS AND SHENANGO IRON RANGE
 JAN. 1, 1972

