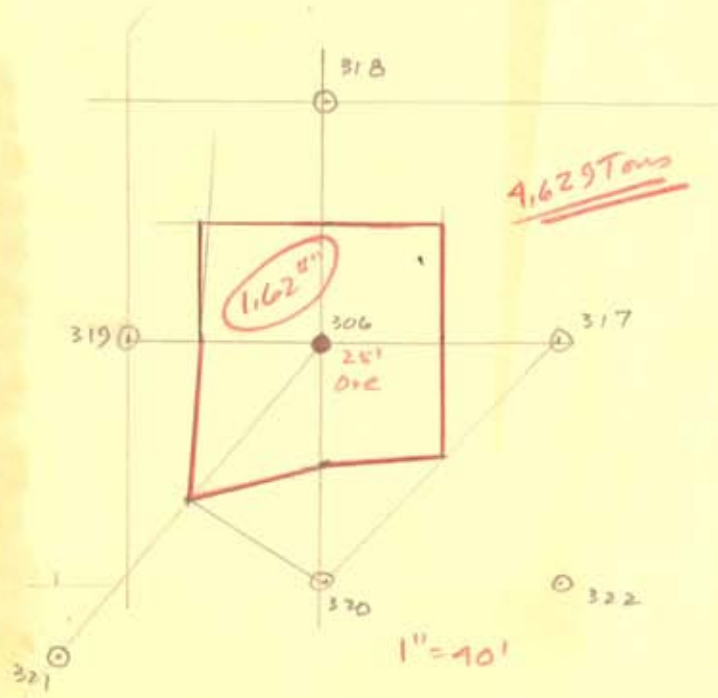


40' x 50'
50'



4,629 Tons

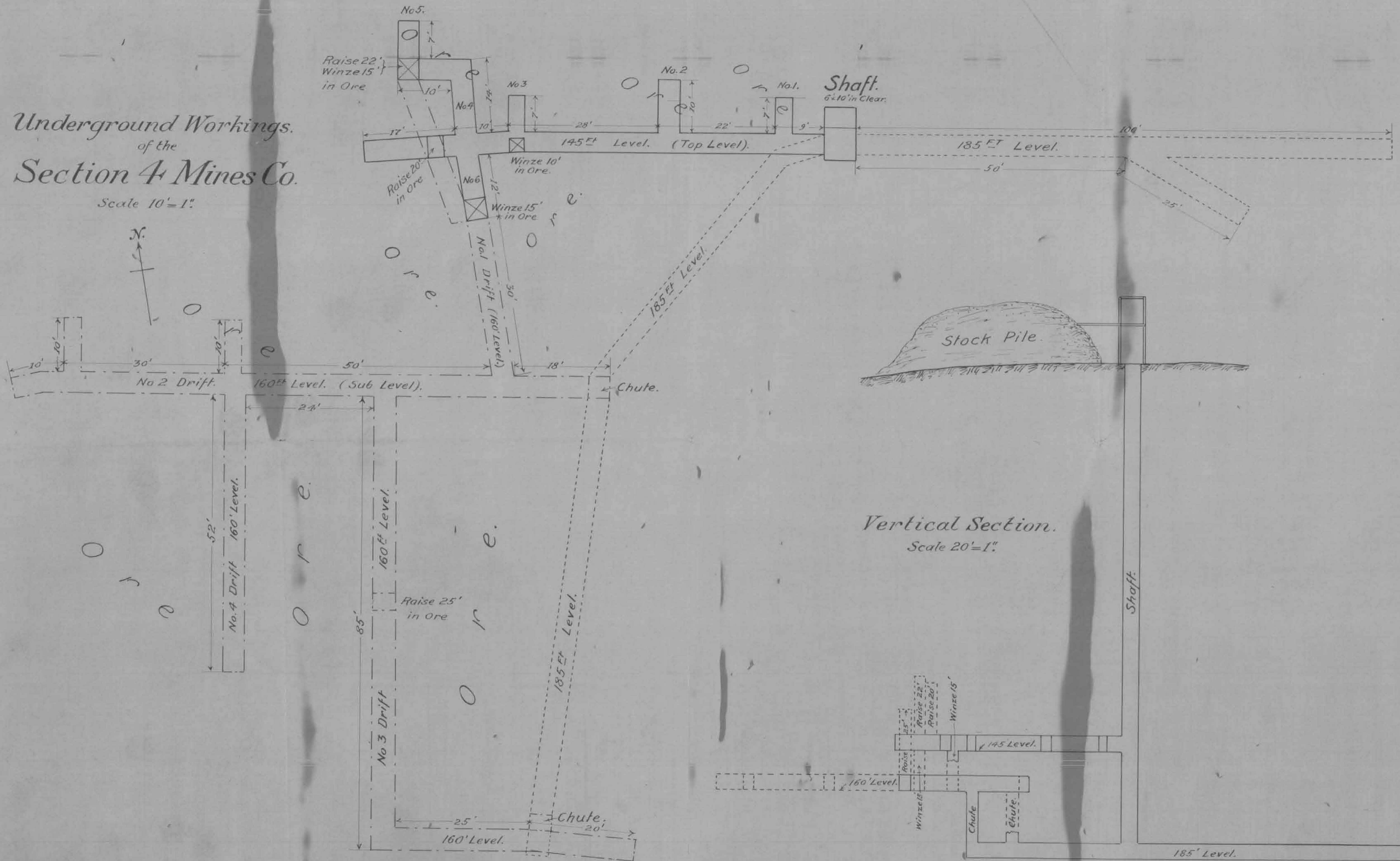
1" = 40'

ESTIMATED
 BY _____
 SEP 20 1962
 UNIVERSITY OF MINNESOTA
 SCHOOL OF MINES
 ORE ESTIMATE DIVISION

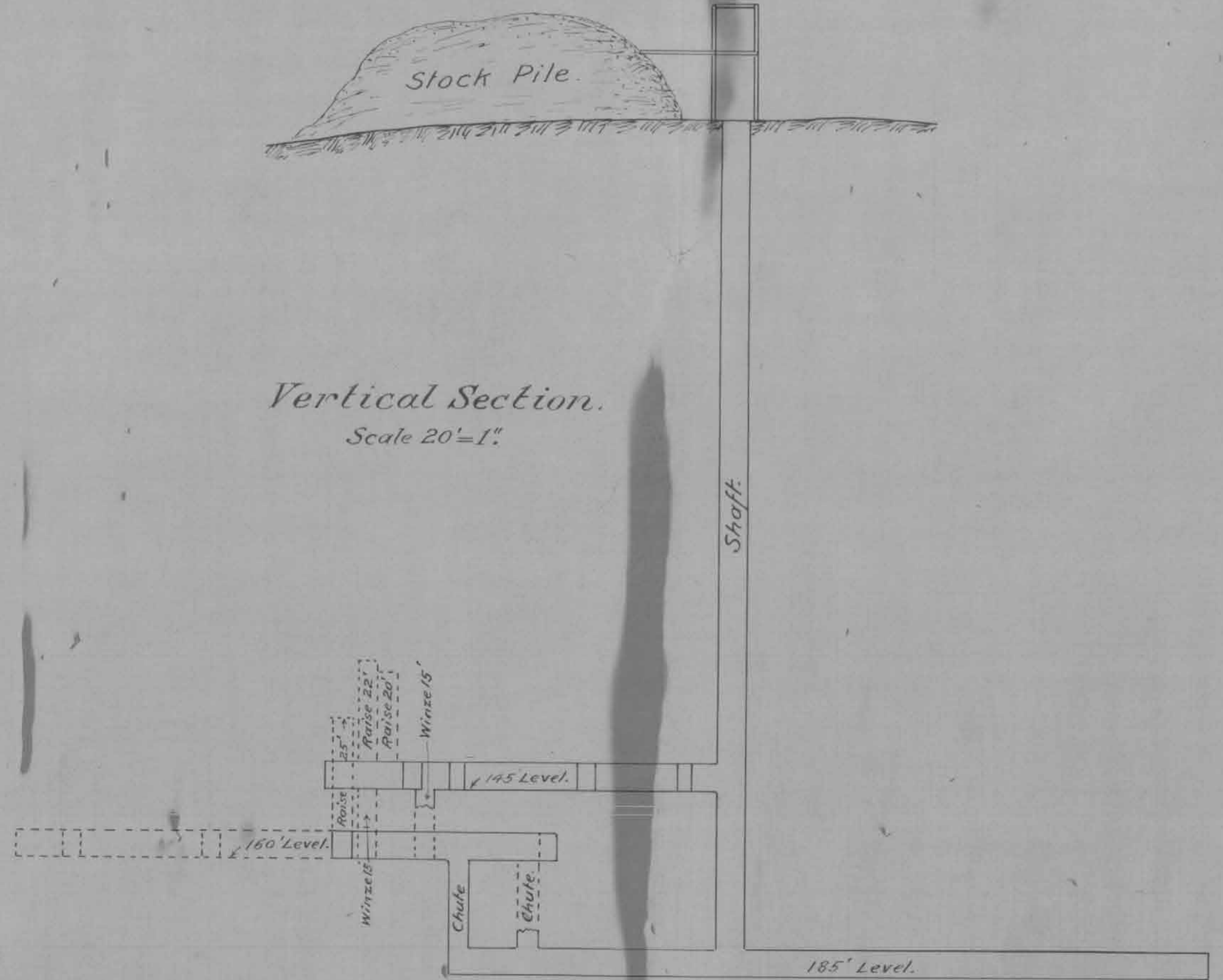
W. S. MOORE CO.
 EXPLORATIONS
WICKEY
 LOT 10 SEC. 4-57-17
 SCALE: 1" = 200'
 DATE: 5-1-62 HIBBING, MINN.

Underground Workings.
of the
Section 4 Mines Co.

Scale 10' = 1"



Vertical Section.
Scale 20' = 1"





SECTION-4-MINES-CO.

PHOTO BY CARLSON