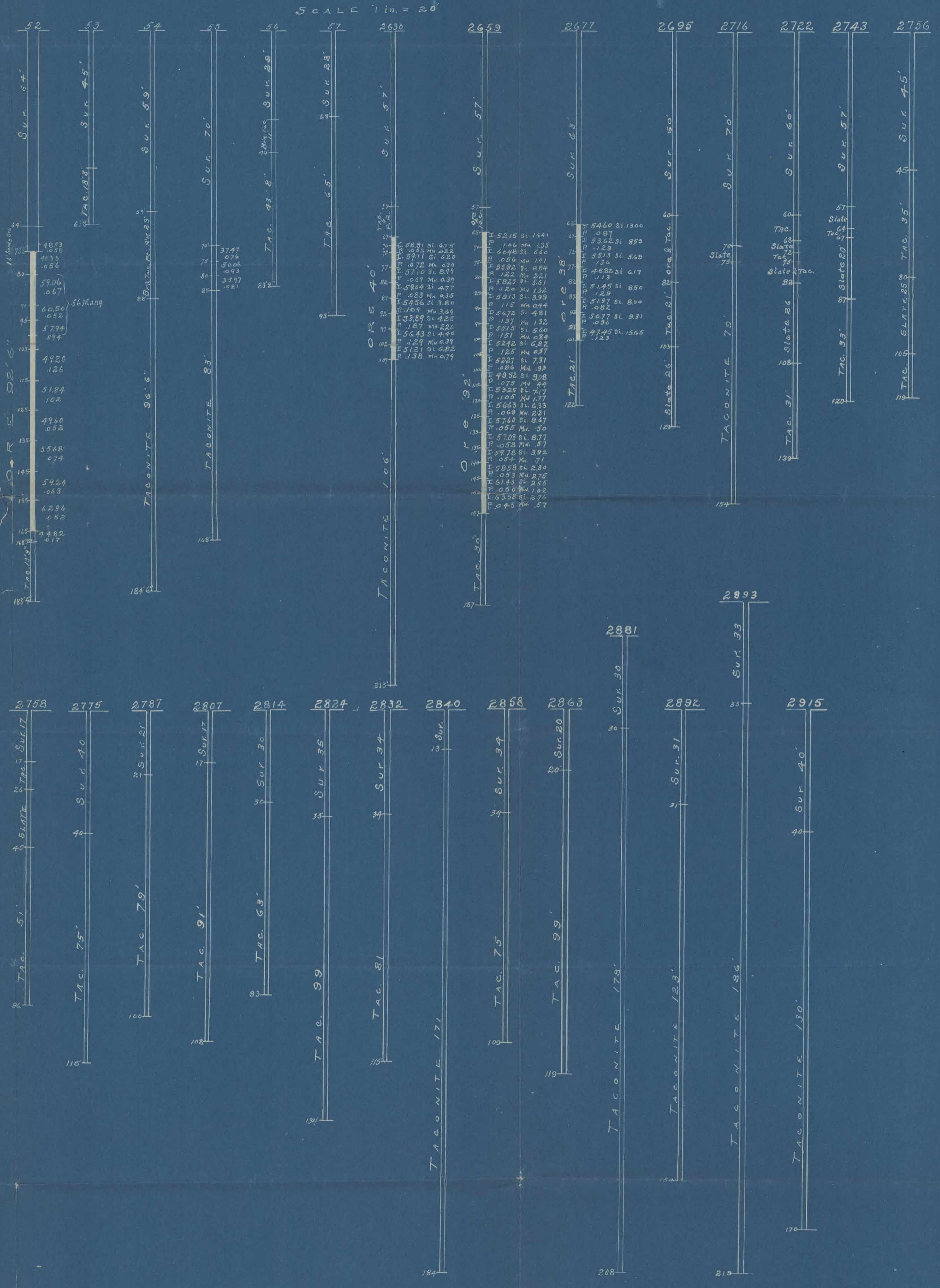
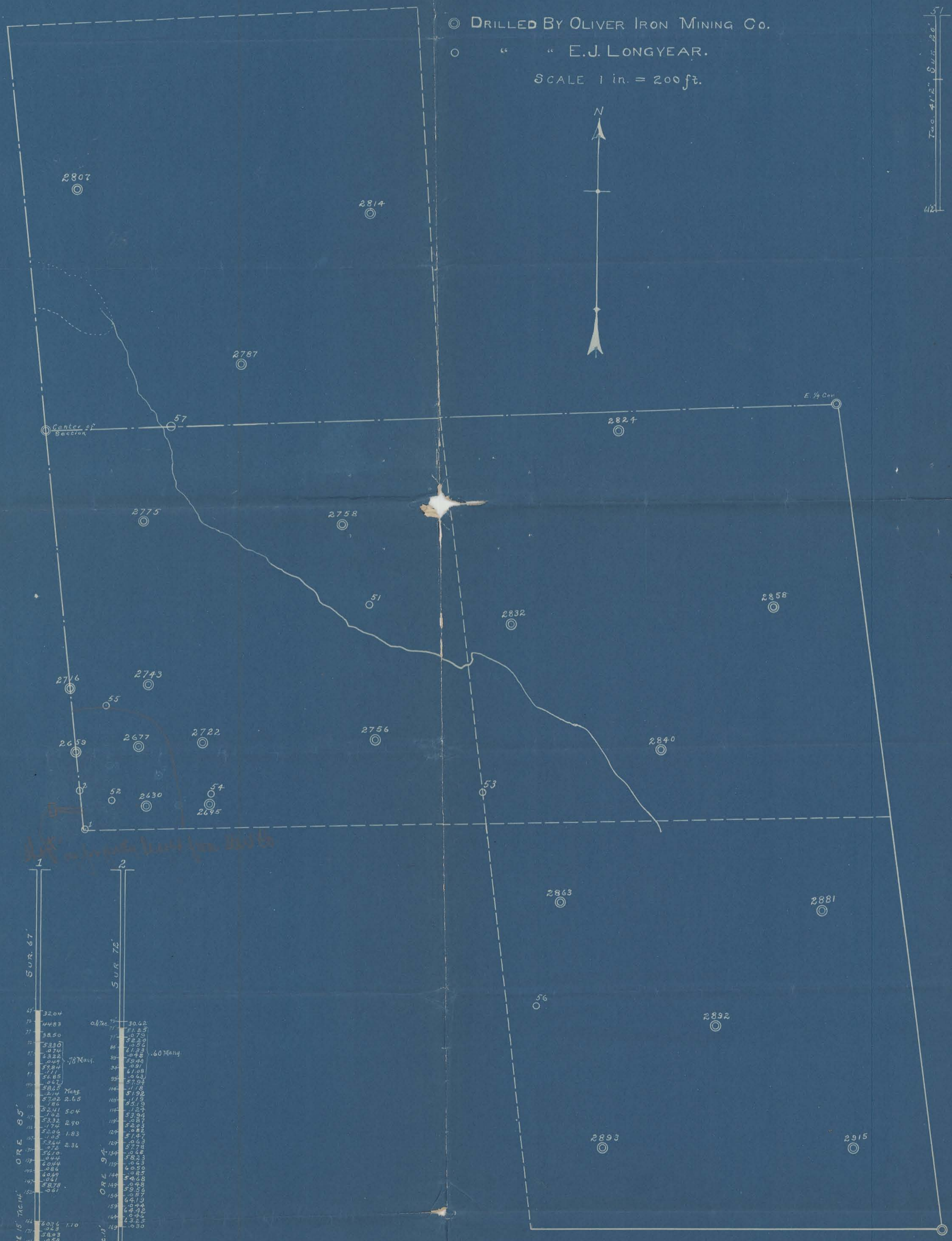


EXPLORATIONS ON E 1/2 & NW 1/4 OF SE 1/4, & SW 1/4 OF NE 1/4 SEC. 10-58-19.

© DRILLED BY OLIVER IRON MINING CO.
" " " " E. J. LONGYEAR.
SCALE 1 in. = 200 ft.



ORE 85'

Depth	Log Description
1	51
2	52
3	53
4	54
5	55
6	56
7	57
8	58
9	59
10	60
11	61
12	62
13	63
14	64
15	65
16	66
17	67
18	68
19	69
20	70
21	71
22	72
23	73
24	74
25	75
26	76
27	77
28	78
29	79
30	80
31	81
32	82
33	83
34	84
35	85
36	86
37	87
38	88
39	89
40	90
41	91
42	92
43	93
44	94
45	95
46	96
47	97
48	98
49	99
50	100