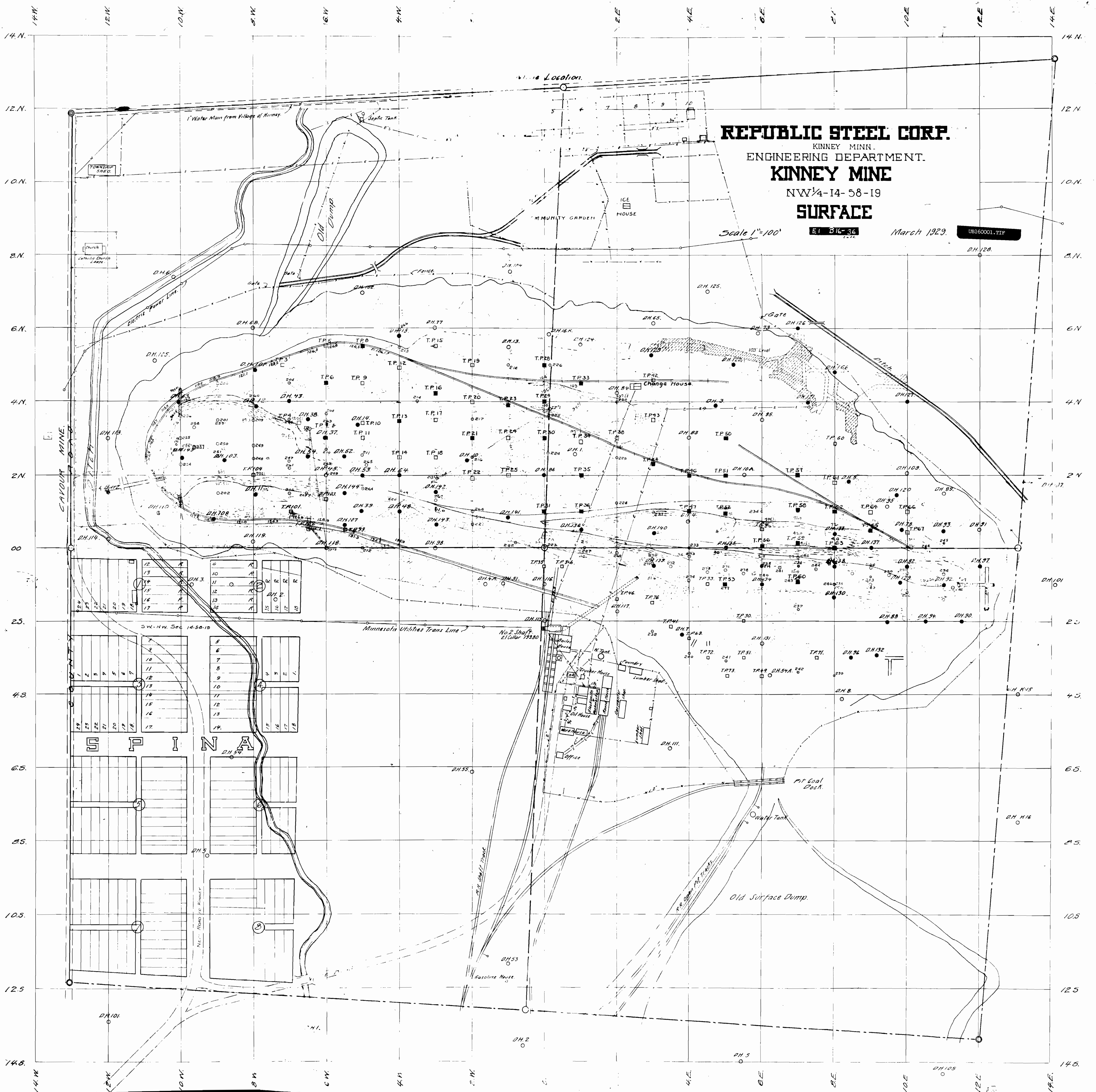




Proposed Hotel  
**REPUBLIC IRON & STEEL CO.**  
KINNEY MINE  
ENGINEERING DEPARTMENT.  
**KINNEY MINE**  
NW 1/4 14-58-19  
**SURFACE**  
AUG 2 1927  
Scale 1"=100'

**S P I N A**



**REPUBLIC STEEL CORP.**  
KINNEY MINE  
ENGINEERING DEPARTMENT.  
**KINNEY MINE**  
NW 1/4-14-58-19  
**SURFACE**

Scale 1"=100' E1 814-36 March 1929 UB160001.TPF

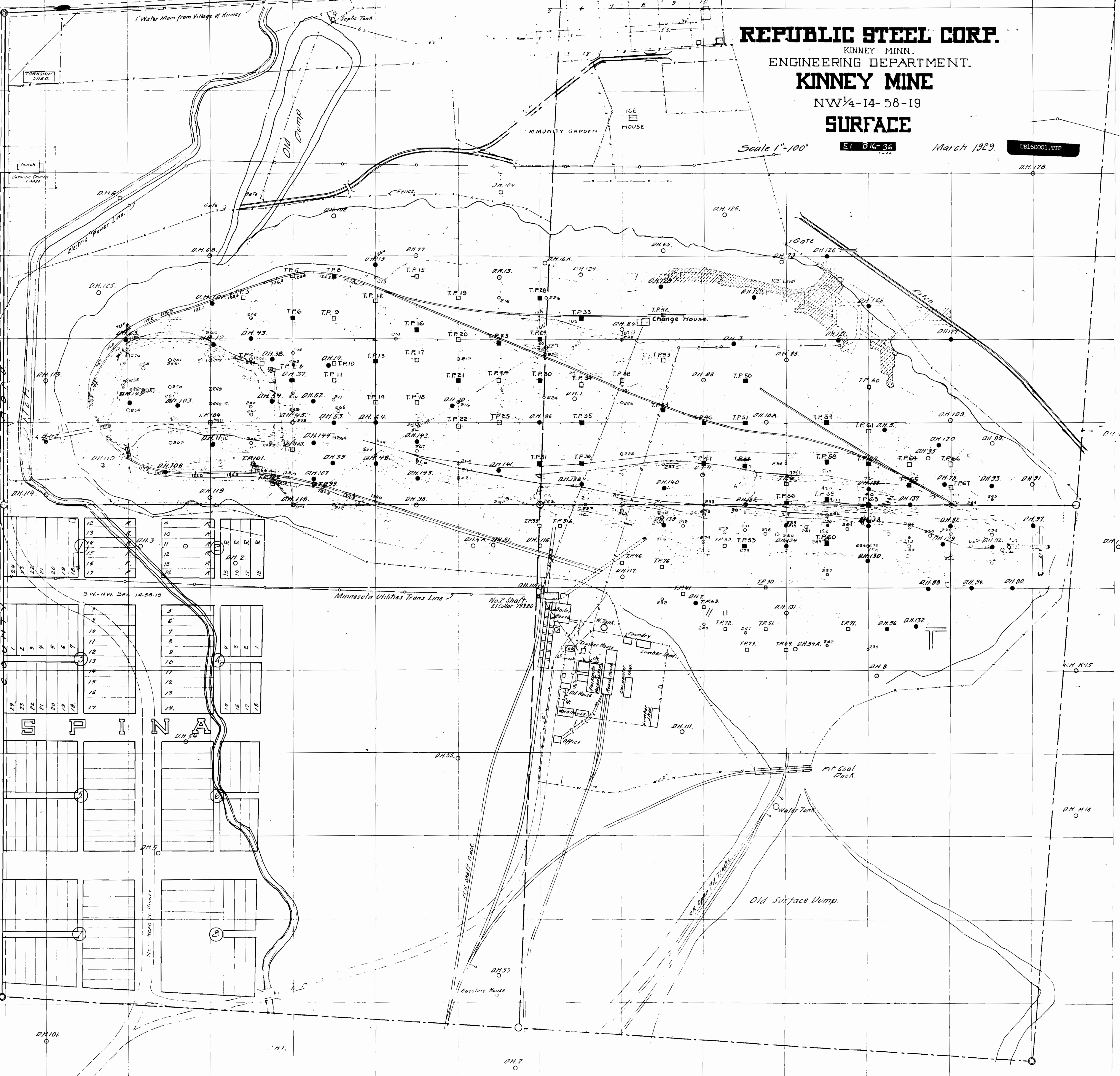
SW-NW Sec 14-58-19

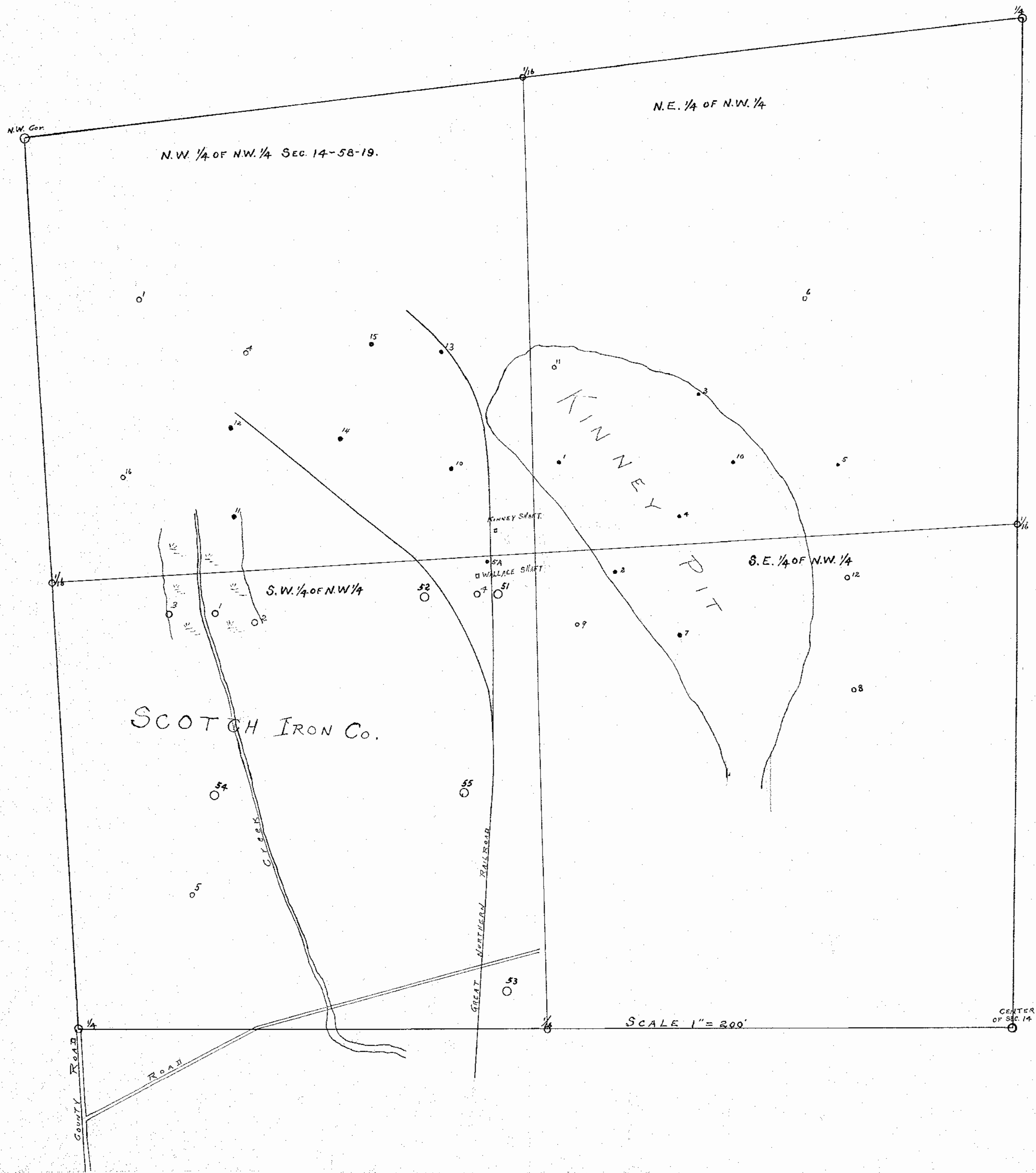
1	2	3	4	5	6	7	8	9	10	11	12	13	14	15	16	17	18
19	20	21	22	23	24	25	26	27	28	29	30	31	32	33	34	35	36

NE 1/4 ROAD TO KINNEY

No. 2 Shaft  
E1 Collar 19380

W. Tank  
Lumber Shed  
Office  
K. A. O'Brien Pit 12815





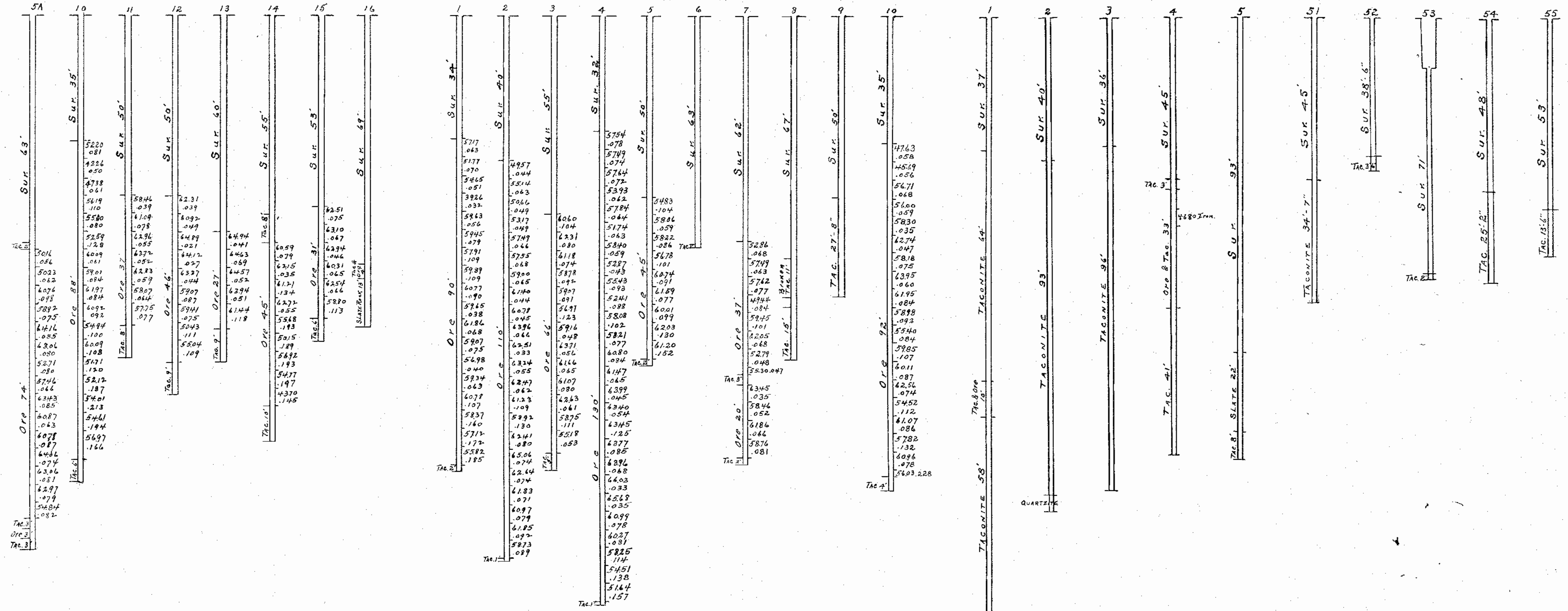
VERTICAL SECTIONS OF DRILL HOLES.

Scale 1" = 20'

HOLES IN N.W. 1/4 of N.W. 1/4

HOLES IN N.E. & S.E. 1/4 of N.W. 1/4

HOLES IN S.W. 1/4 of N.W. 1/4 SEC. 14, T. 58, R. 19.



W. A. WAMMA & CO.  
ENGINEERING DEPT.  
No. 823

14-58-19

Printed File