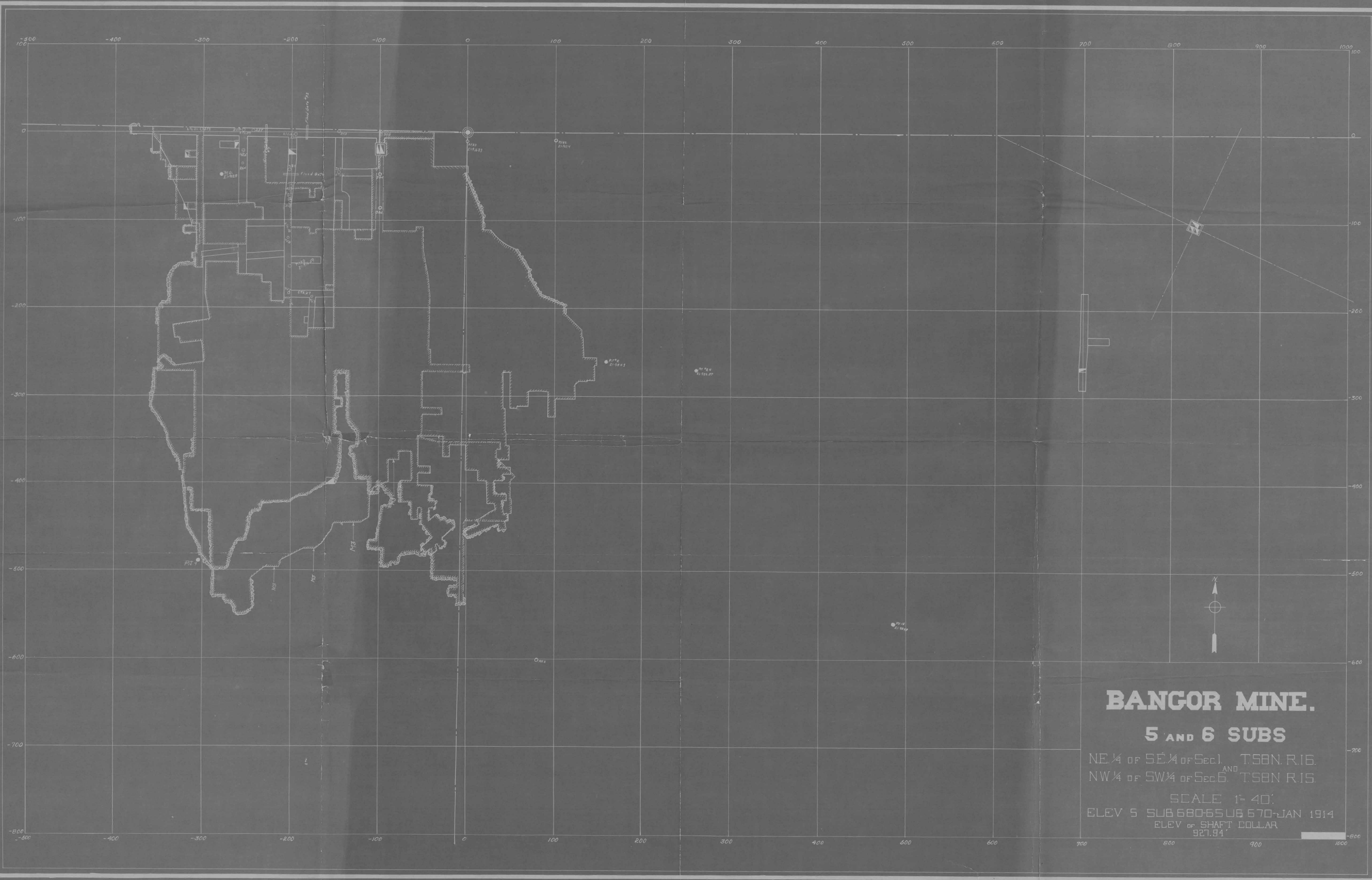


1647  
S 1/2

REPRODUCED  
OCT 28 1972  
U.S. GEOLOGICAL SURVEY







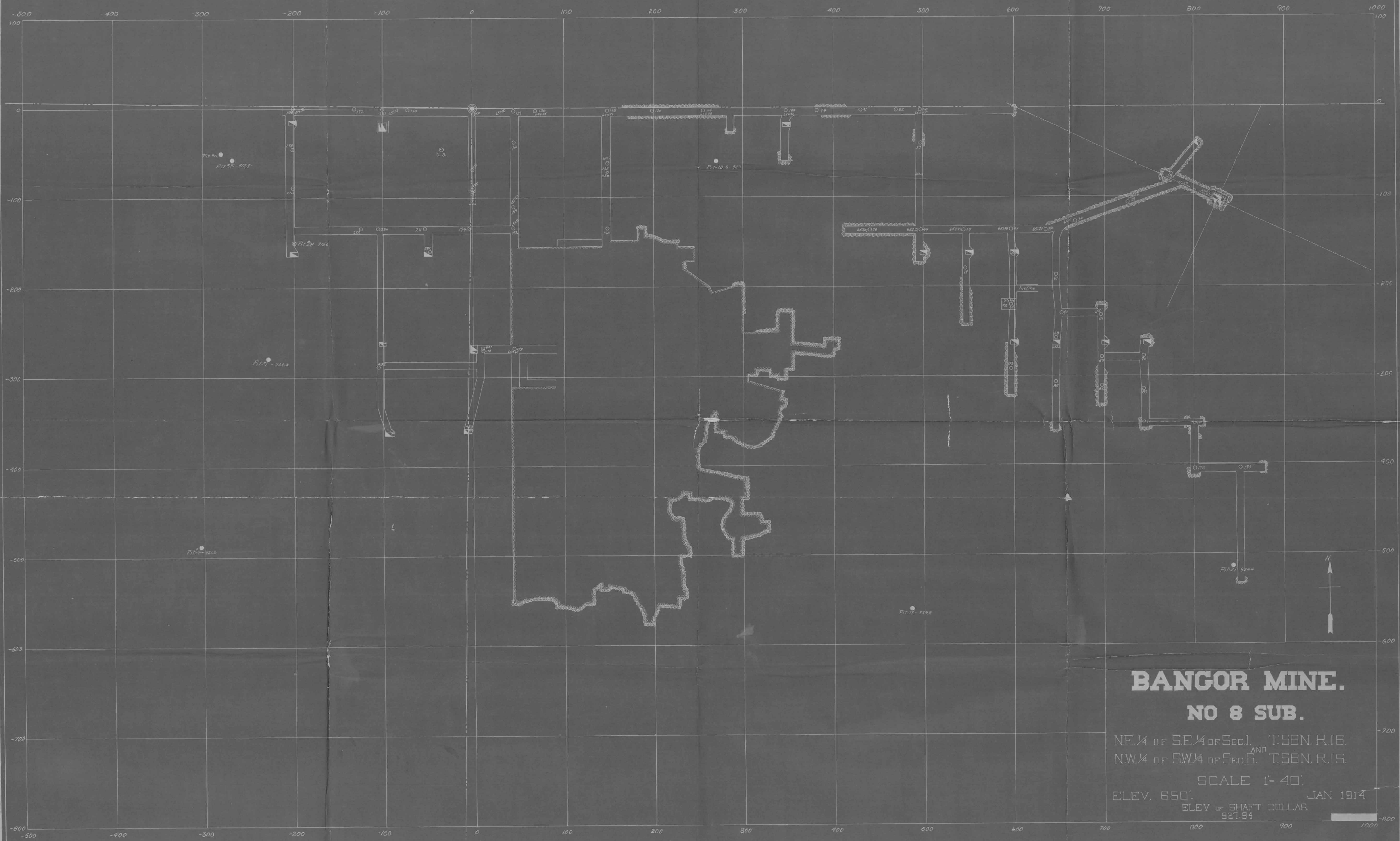
**BANGOR MINE.**

**5 AND 6 SUBS**

NE 1/4 of SE 1/4 of Sec. 1, T. 58N. R. 16.  
 NW 1/4 of SW 1/4 of Sec. 6, T. 58N. R. 15.

SCALE 1" = 40'  
 ELEV 5 SUB 680-650 & 670-JAN 1914  
 ELEV OF SHAFT COLLAR  
 927.94'

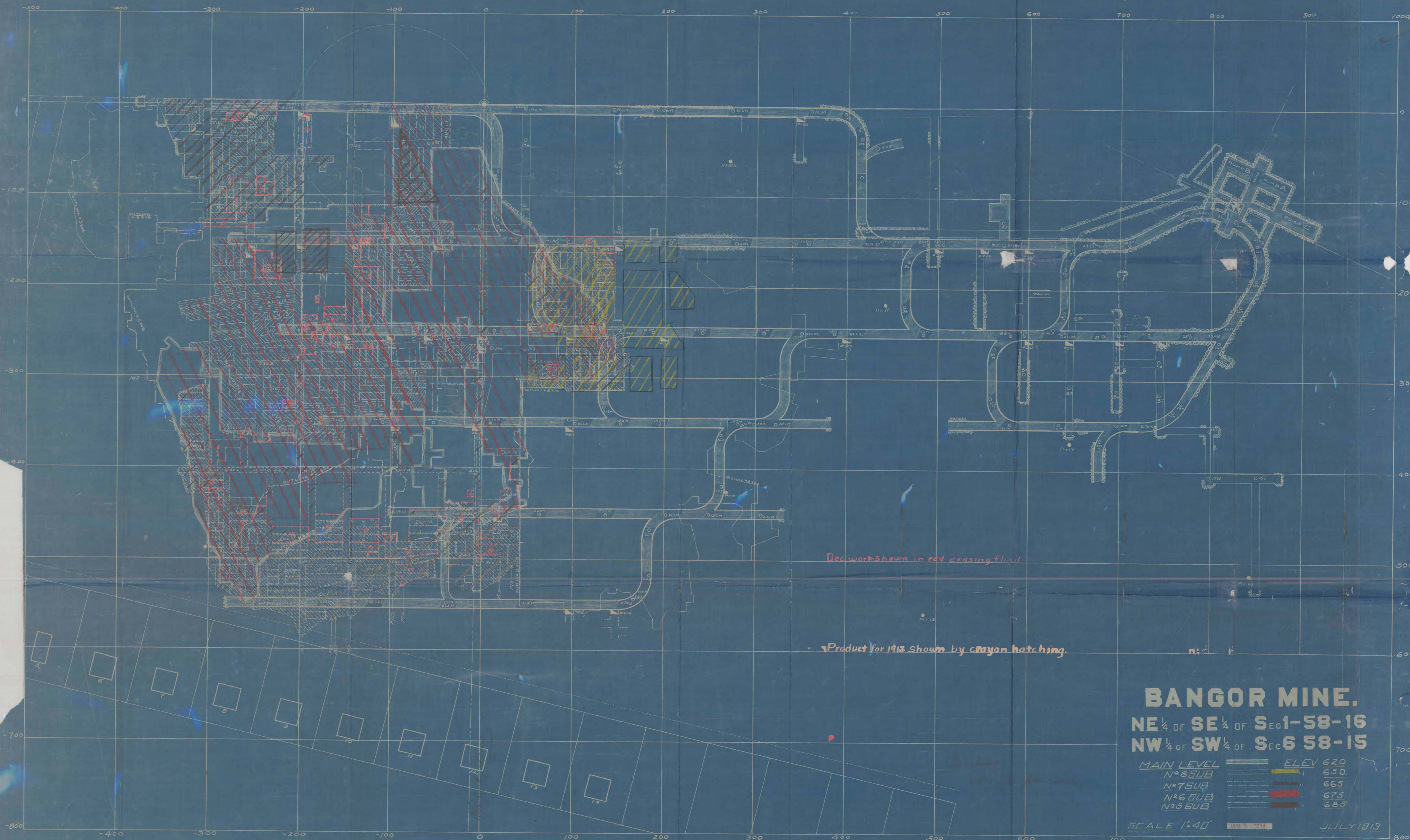




**BANGOR MINE.**  
**NO 8 SUB.**

NE 1/4 of SE 1/4 of Sec. 1, T. 58 N. R. 16.  
 NW 1/4 of SW 1/4 of Sec. 6, T. 58 N. R. 15.  
 SCALE 1" = 40'  
 ELEV. 650' JAN 1914  
 ELEV OF SHAFT COLLAR  
 927.94





Dec work shown in red crasing fluid

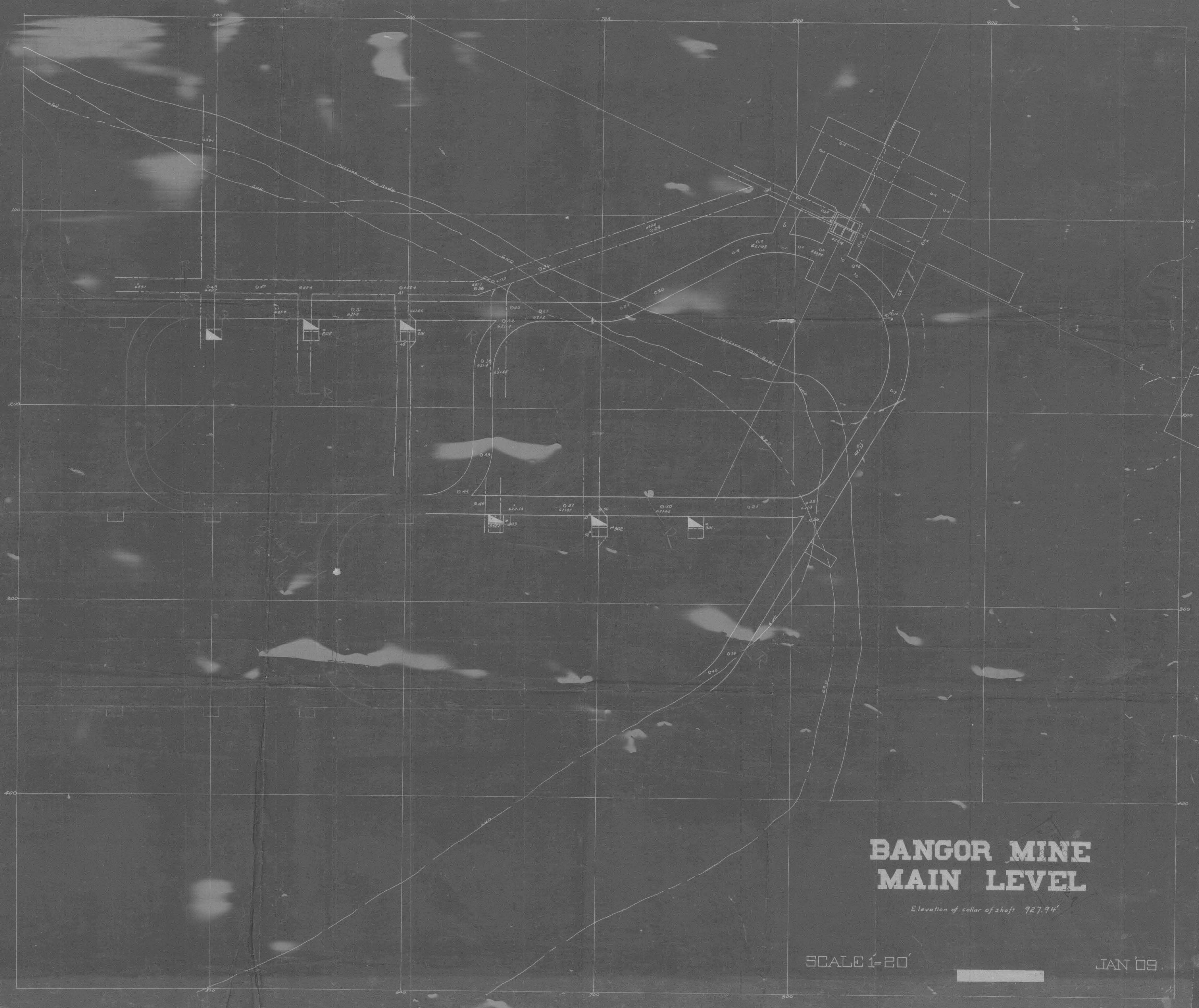
Product for 1913 shown by crayon hatching.

**BANGOR MINE.**  
 NE  $\frac{1}{4}$  OF SE  $\frac{1}{4}$  OF SEC 1-58-16  
 NW  $\frac{1}{4}$  OF SW  $\frac{1}{4}$  OF SEC 6 58-15

MAIN LEVEL	ELEV
N <sup>o</sup> 8 SUB	620
N <sup>o</sup> 7 SUB	650
N <sup>o</sup> 6 SUB	665
N <sup>o</sup> 5 SUB	675

SCALE 1"=40' JULY 1913





# BANGOR MINE MAIN LEVEL

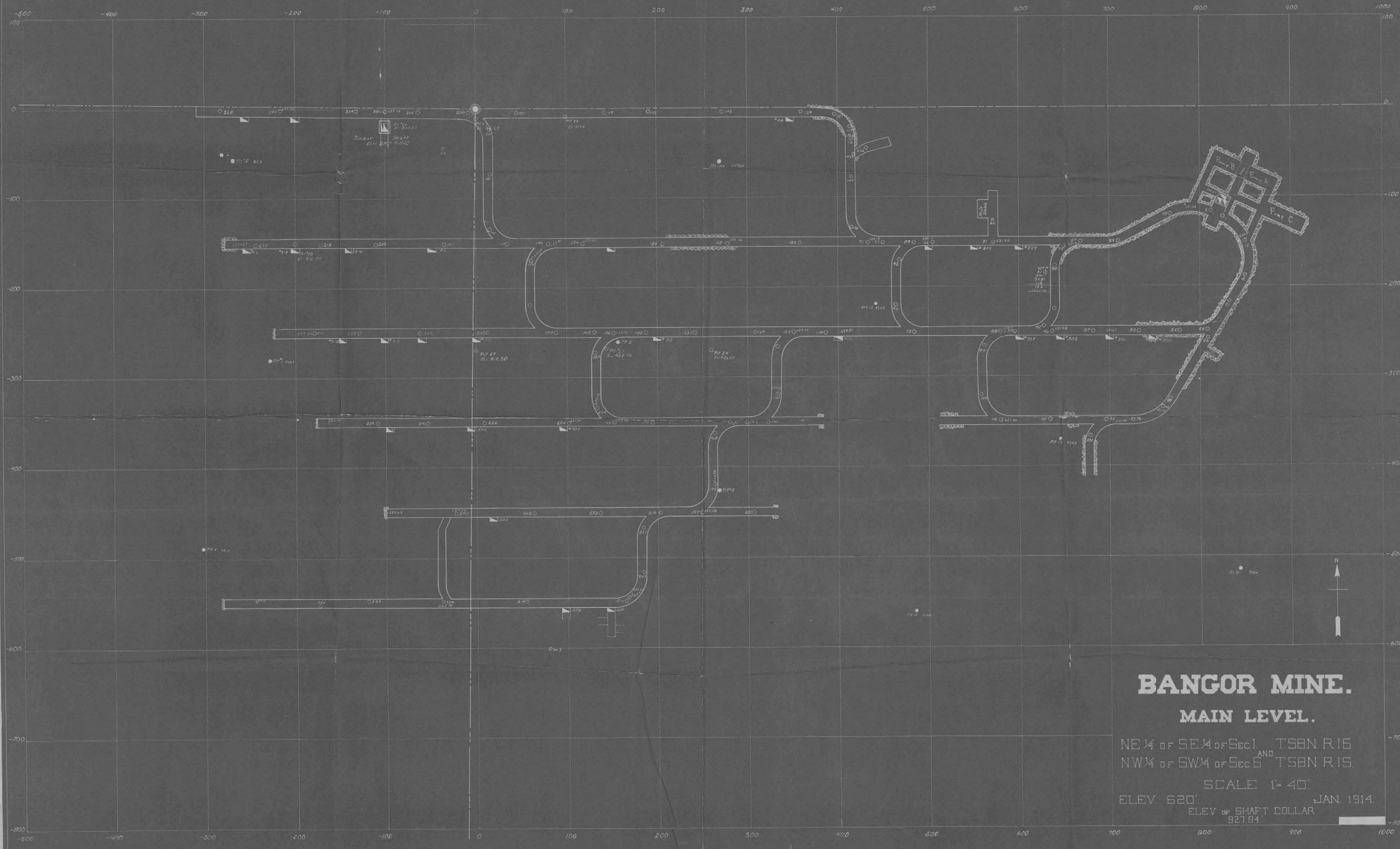
Elevation of collar of shaft 927.94'

SCALE 1"=20'



JAN '09





**BANGOR MINE.**  
**MAIN LEVEL.**

NE 1/4 of SE 1/4 of Sec. 1 T8N R. 16  
 AND  
 NW 1/4 of SW 1/4 of Sec. 6 T8N R. 15.

SCALE 1" = 40'

ELEV. 620' JAN. 1914.  
 ELEV. OF SHAFT COLLAR  
 927.94'



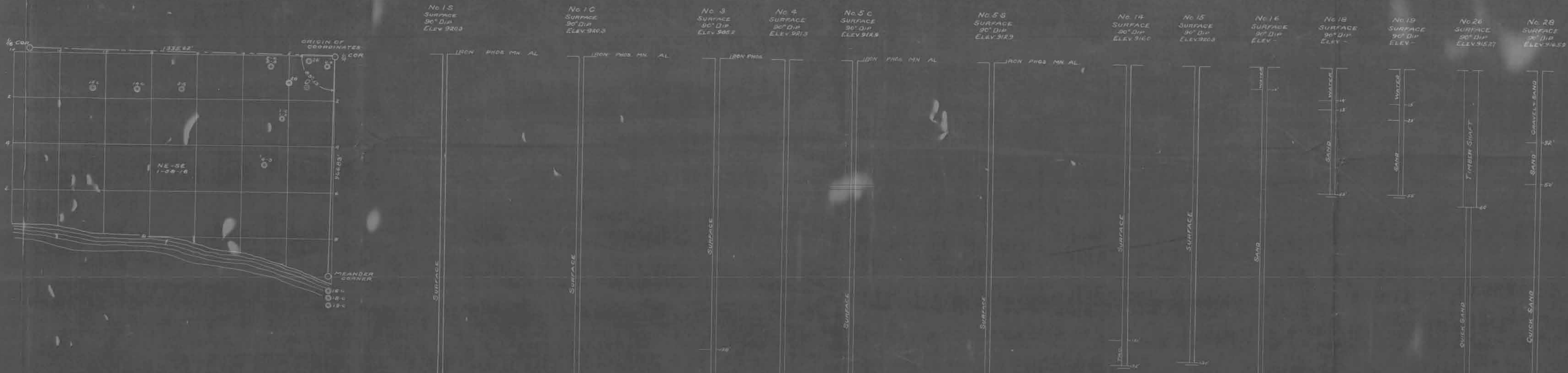
# EXPLORATION ON SEC. 1., T. 58 N., R. 16 W., MINN.

FOR ADDITIONAL BANGOR DRILLING SEE SEC 6-58-15

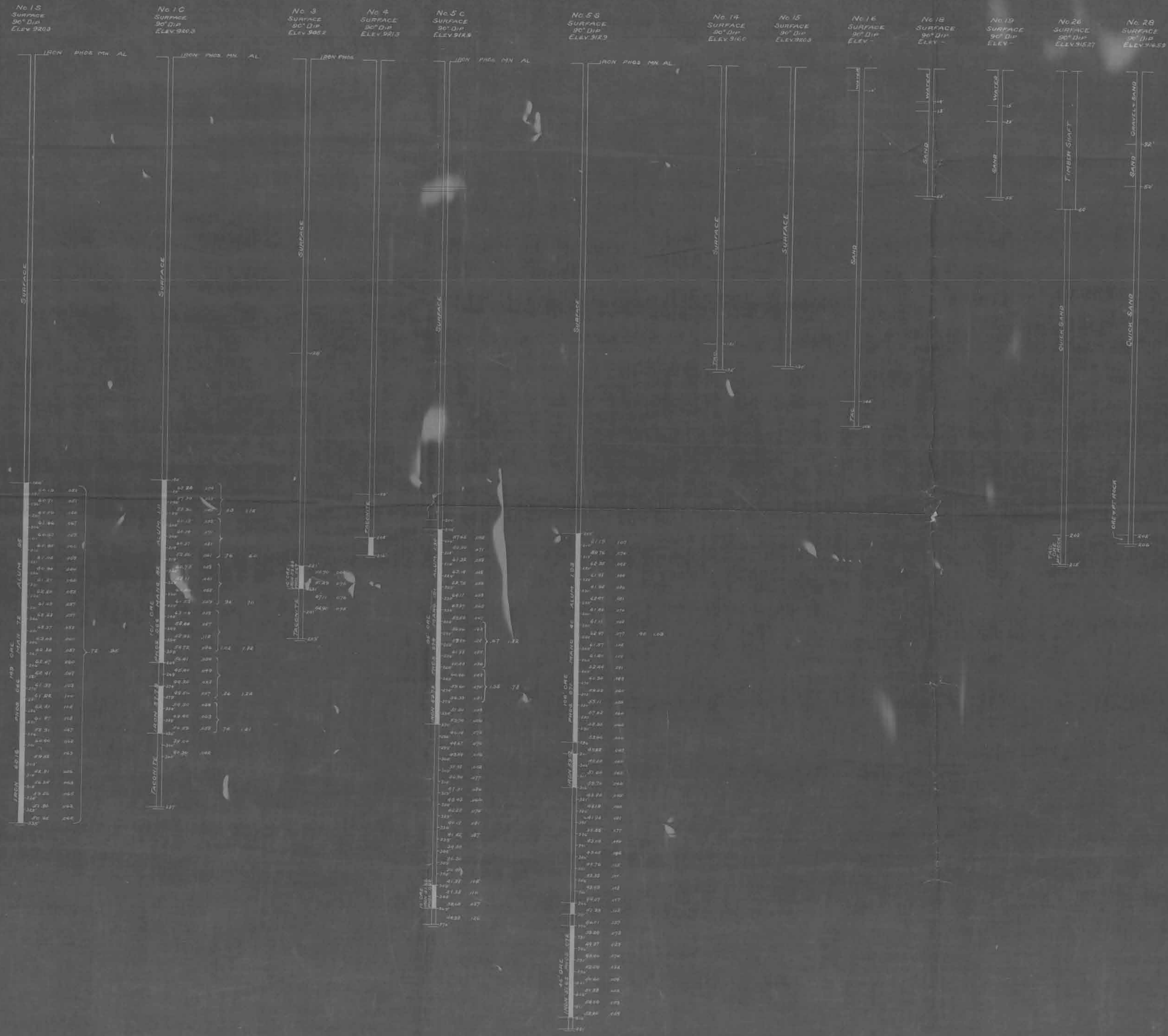
## BANGOR MINING CO. BANGOR MINE

SCALE OF PLAT 1"=200' SCALE OF DRILL HOLES 1"=20'

LOWER LIMIT FOR ORE = 49% IRON



CONTRACTORS	COORDINATES	GENERAL DATA		CONDITION OF HOLE
		FROM FEET	TOTAL	
G.A. ST. CLAIR	N 10 280.00 S	280.00	W	
DOLE WOODRUFF	10 280.00 S	280.00	W	
G.A. ST. CLAIR	30 450.00 S	450.00	W	
DOLE WOODRUFF	30 450.00 S	450.00	W	
G.A. ST. CLAIR	50 720.00 S	720.00	W	
DOLE WOODRUFF	50 720.00 S	720.00	W	
G.A. ST. CLAIR	70 990.00 S	990.00	W	
DOLE WOODRUFF	70 990.00 S	990.00	W	
G.A. ST. CLAIR	90 1260.00 S	1260.00	W	
DOLE WOODRUFF	90 1260.00 S	1260.00	W	
DOLE WOODRUFF	10 280.00 S	280.00	W	
G.A. ST. CLAIR	20 560.00 S	560.00	W	
DOLE WOODRUFF	20 560.00 S	560.00	W	
DOLE WOODRUFF	30 840.00 S	840.00	W	
G.A. ST. CLAIR	40 1120.00 S	1120.00	W	
DOLE WOODRUFF	40 1120.00 S	1120.00	W	
DOLE WOODRUFF	50 1400.00 S	1400.00	W	
G.A. ST. CLAIR	60 1680.00 S	1680.00	W	
DOLE WOODRUFF	60 1680.00 S	1680.00	W	
DOLE WOODRUFF	70 1960.00 S	1960.00	W	
G.A. ST. CLAIR	80 2240.00 S	2240.00	W	
DOLE WOODRUFF	80 2240.00 S	2240.00	W	
DOLE WOODRUFF	90 2520.00 S	2520.00	W	
G.A. ST. CLAIR	100 2800.00 S	2800.00	W	
DOLE WOODRUFF	100 2800.00 S	2800.00	W	





# EXPLORATION ON SEC. 6., T. 58 N., R. 15 W., MINN.

FOR ADDITIONAL BANGOR DRILLING SEE SEC 1-58-16

## BANGOR MINING CO. BANGOR MINE

SCALE OF PLAT 1"=200' SCALE OF DRILL HOLES 1"=20'  
LOWER LIMIT FOR ORE = 48% IRON

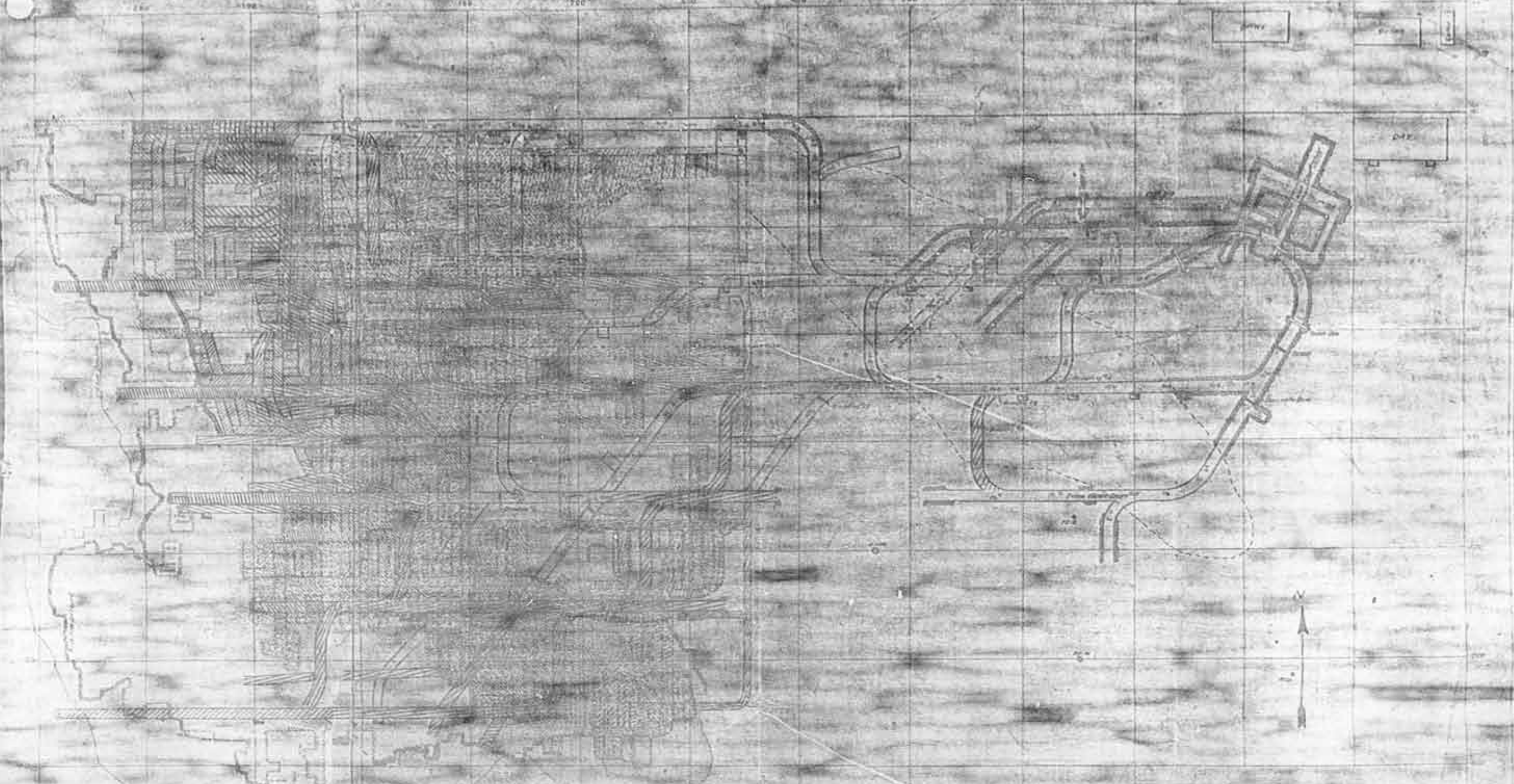


CONTRACTORS	COORDINATES	GENERAL DATA	CONDITION OF HOLE
		FROM FEET	TOTAL
COLE & McDONALD	No. 20 26000 S. 10200 E.		
W.A. ST. CLAIR	21 26000 S. 10200 E.		
	22 26000 S. 10200 E.		
	23 26000 S. 10200 E.		
	24 26000 S. 10200 E.		
	25 26000 S. 10200 E.		
COLE & McDONALD	26 26000 S. 10200 E.		
	27 26000 S. 10200 E.		
	28 26000 S. 10200 E.		
W.A. ST. CLAIR	29 26000 S. 10200 E.		
	30 26000 S. 10200 E.		
DULUTH D.D. CO.	31 26000 S. 10200 E.		
	32 26000 S. 10200 E.		
	33 26000 S. 10200 E.		
	34 26000 S. 10200 E.		
	35 26000 S. 10200 E.		
	36 26000 S. 10200 E.		
	37 26000 S. 10200 E.		
	38 26000 S. 10200 E.		
	39 26000 S. 10200 E.		
	40 26000 S. 10200 E.		



09 0506 57 19 OF 51 -- BANGOR MINE C-50 12-3-08

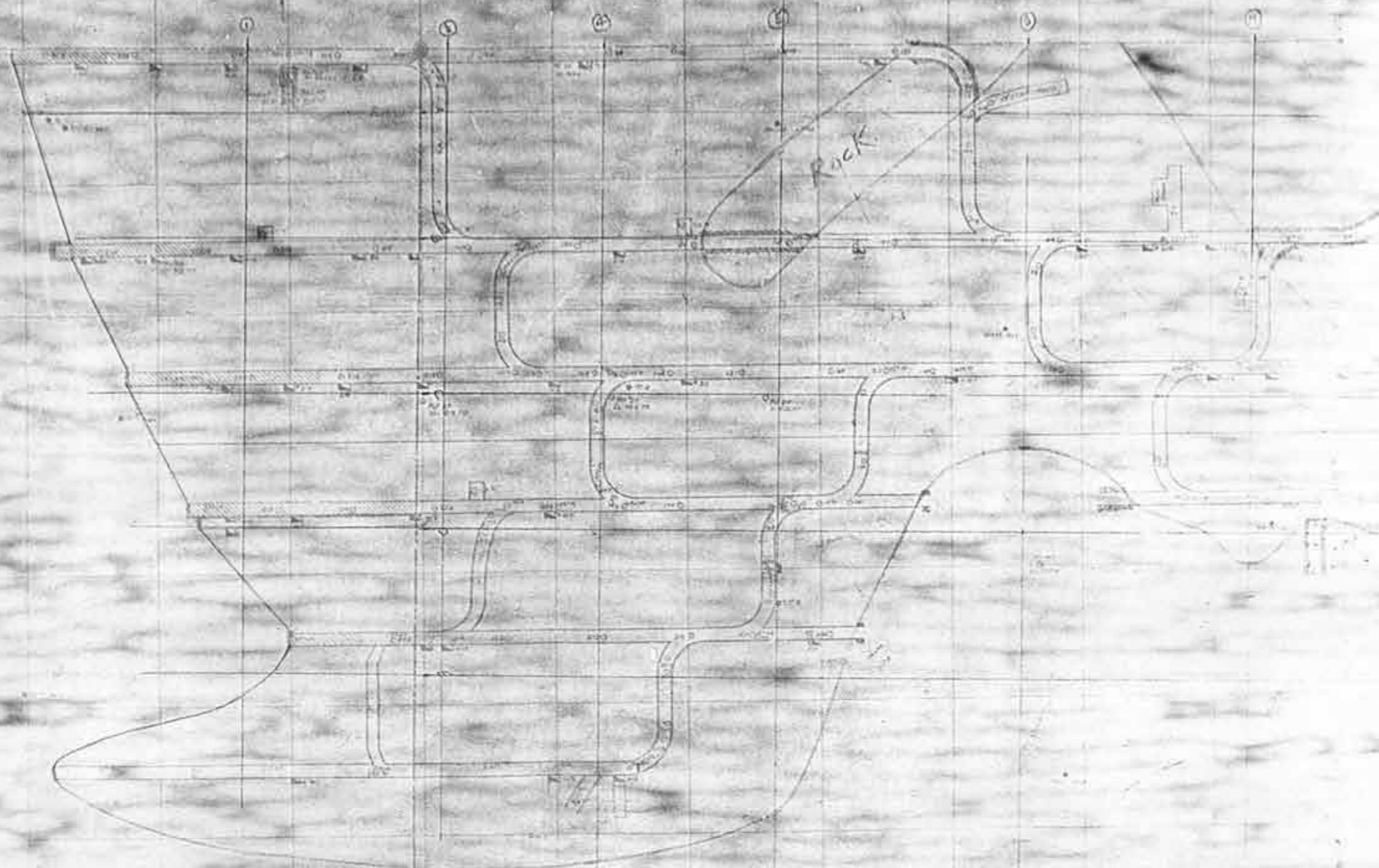
CLAXXIRCOMO



### BANGOR MINE.

- NO. 0 SUB — ELEV. 640
- NO. 10 SUB — ELEV. 630
- NO. 1 LVL — ELEV. 620
- NO. 2 LVL — ELEV. 508
- SHAFT COLLAR — 02704



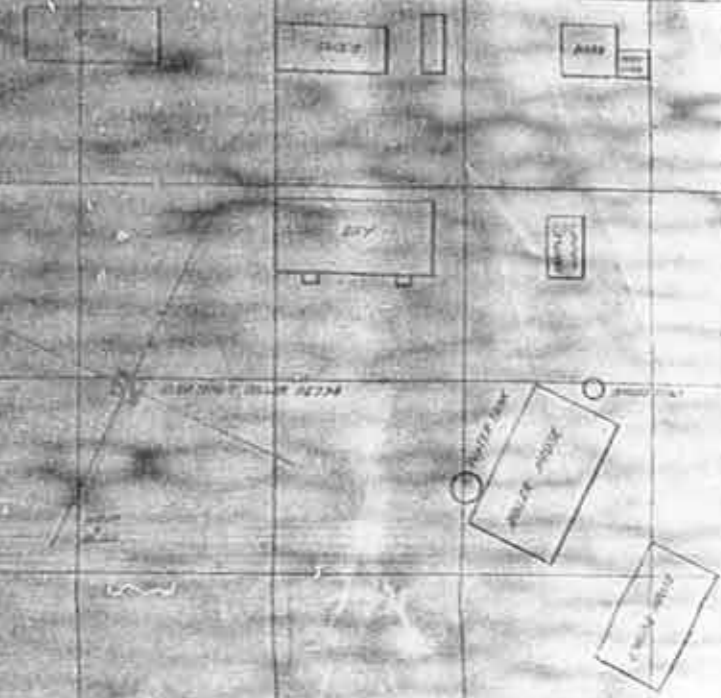
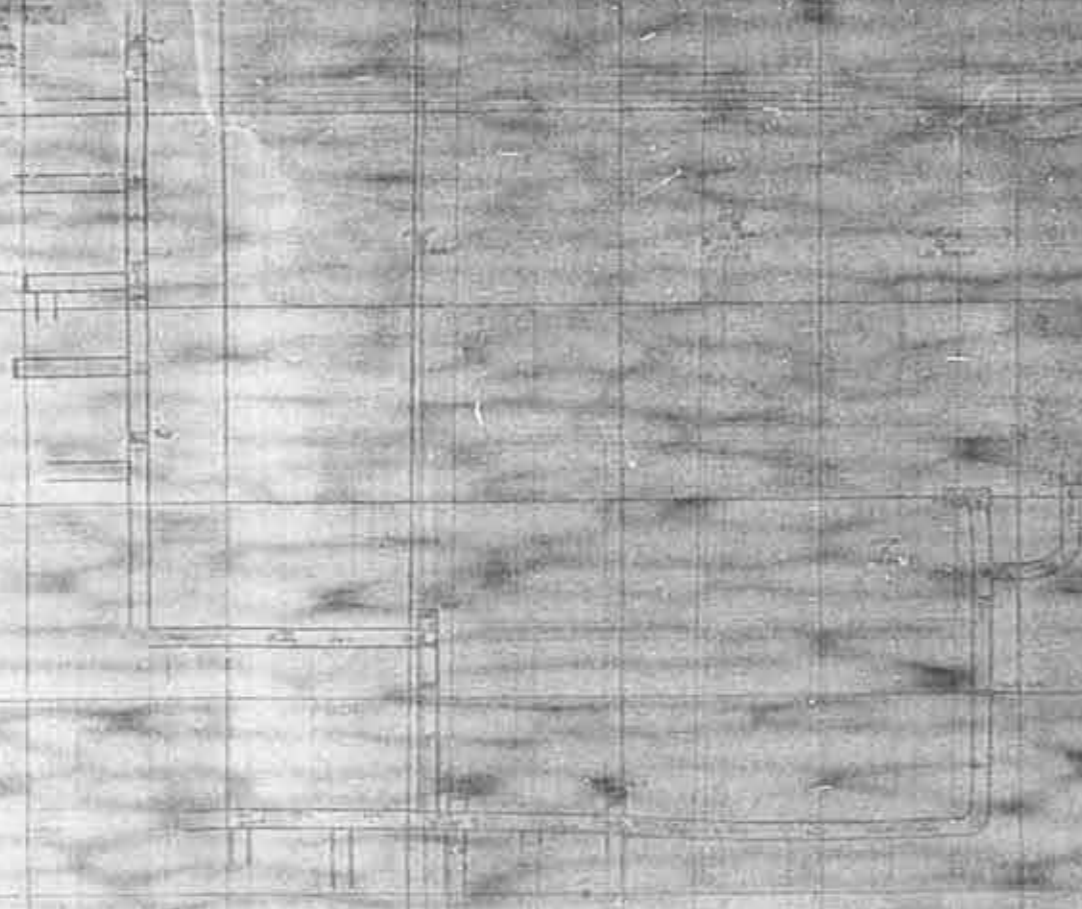
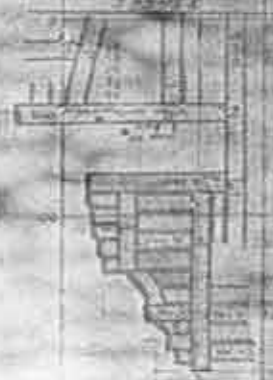


BANGOR HINE

MAIN LEVEL







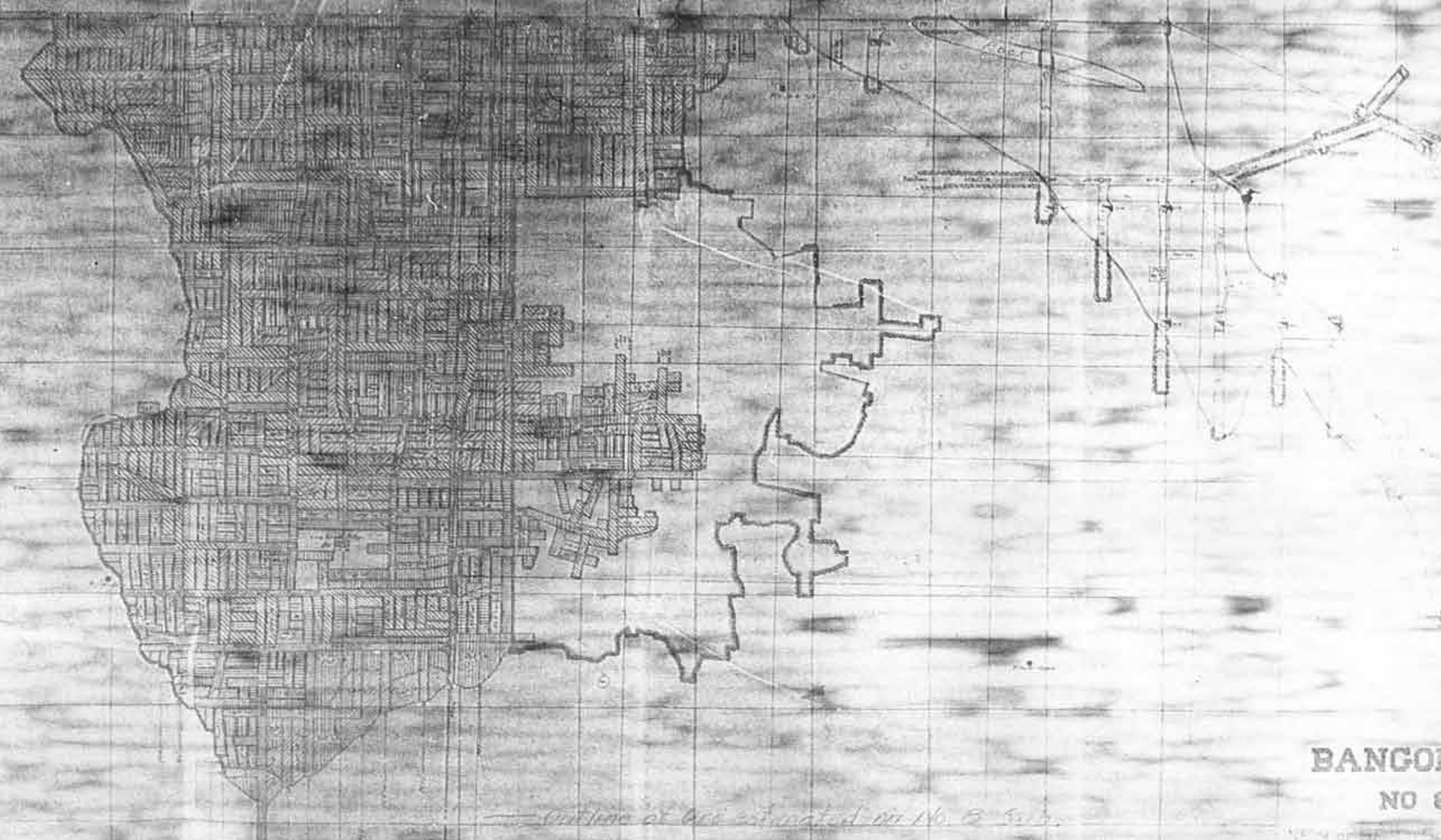
**BANGOR MINE.  
NO 10 SUB.**

NE 1/4 of SE 1/4 of Sec 1 - T 58N R 6E W  
NW 1/4 of SW 1/4 of Sec 6 - T 58N R 6E W

SCALE 1" = 40'  
ELEV. 530' MAP SHEET  
ELEV. of SHAFT COLLAR

*Plot of Bangor Mine No 10 Sub C-50 12-3-08*





*Outline of Ore extracted on No. 8 Sub.*

**BANGOR MINE.**  
**NO 8 SUB.**

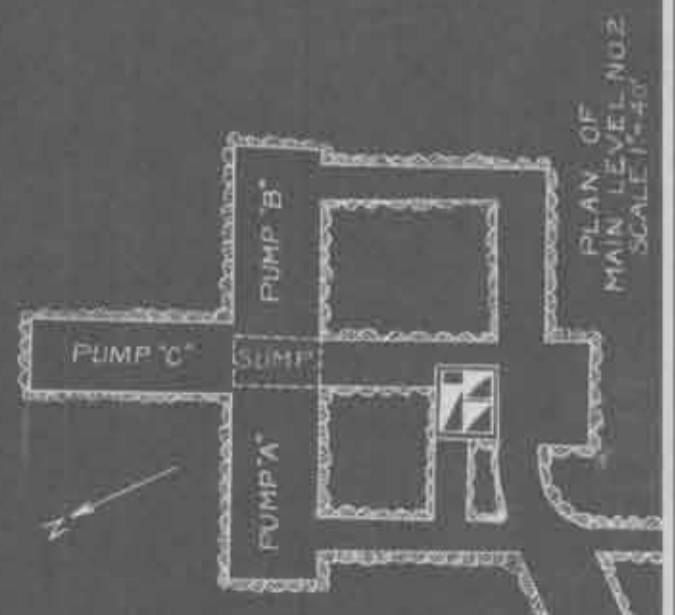
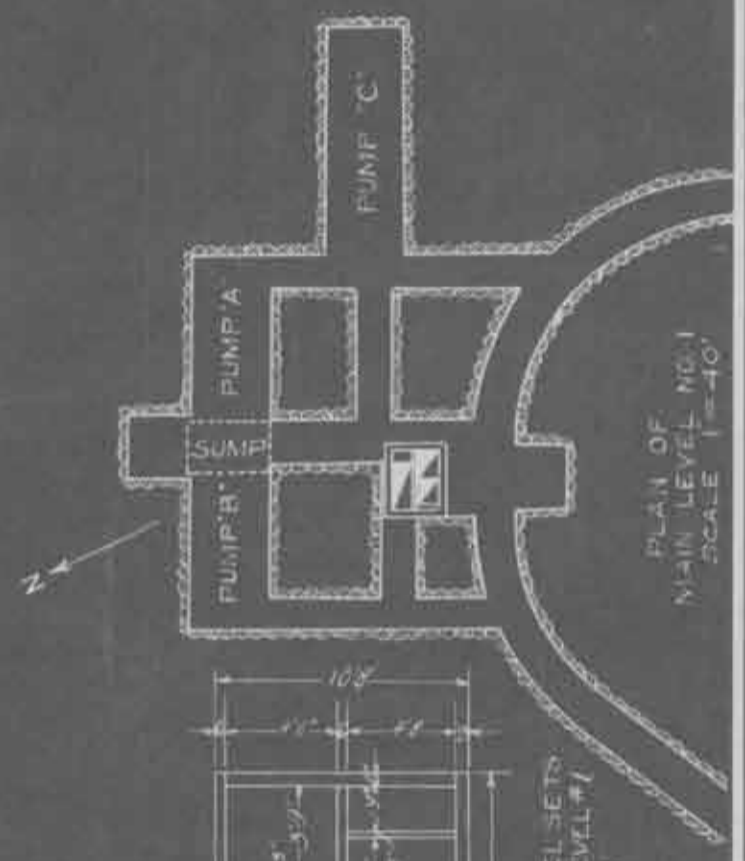
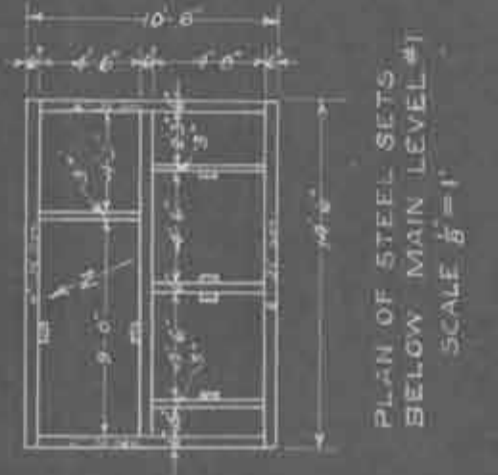
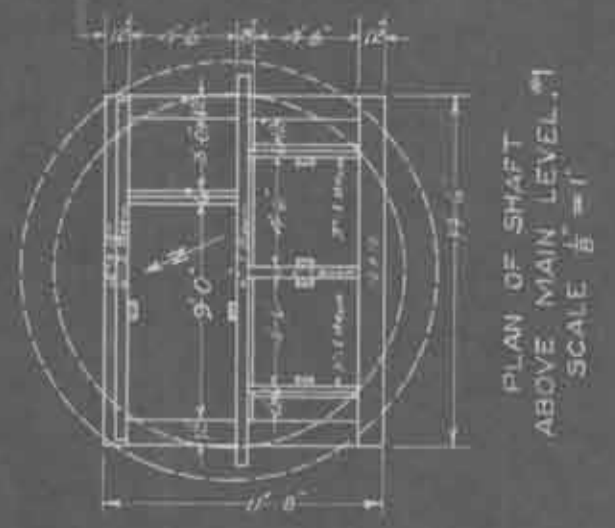
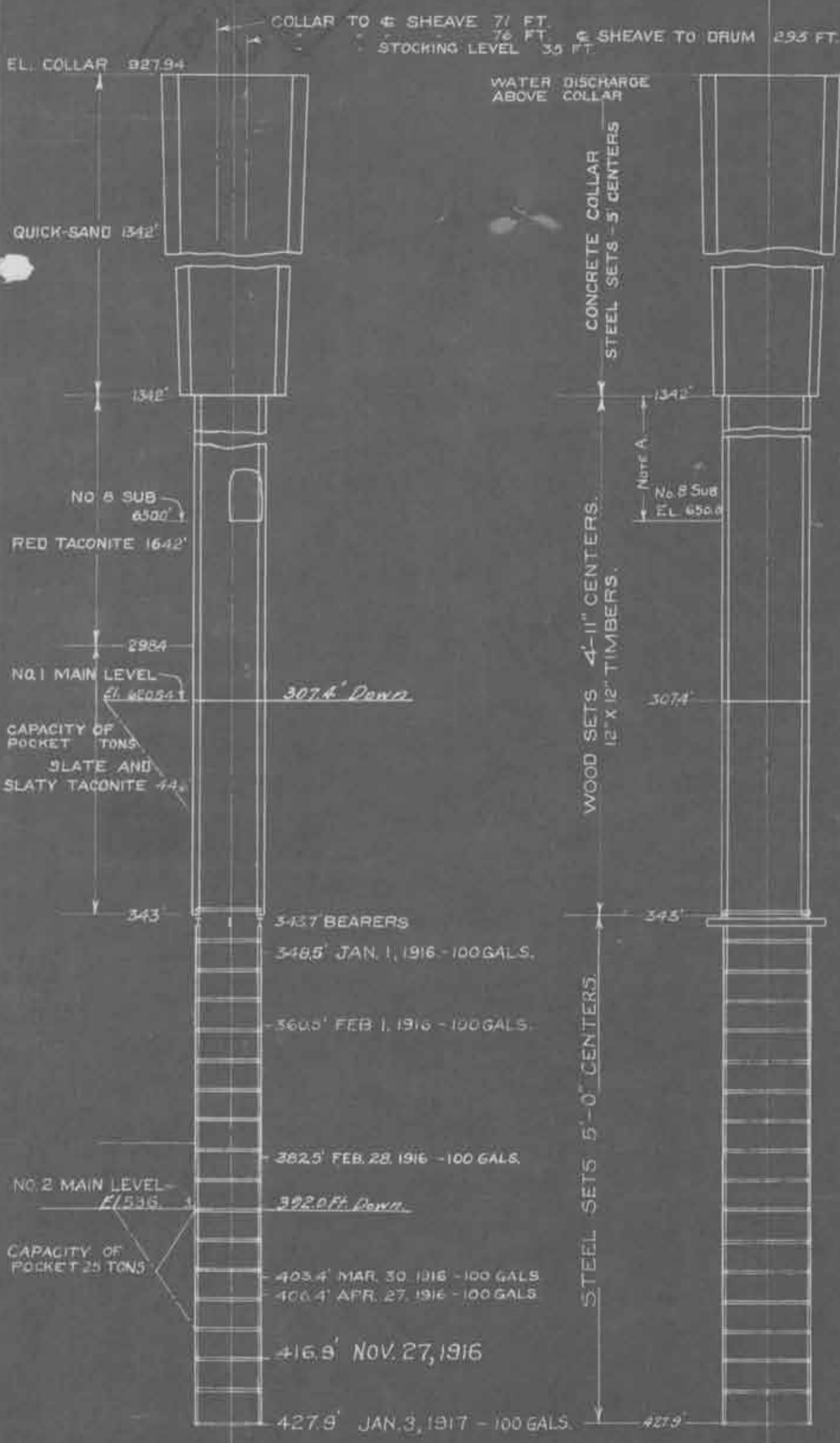




BANGOR MINE  
NO 9 SUB

*But has at least 200 feet  
on the floor*





LOOKING WEST

LOOKING NORTH

REPAIRS & RENEWALS				
WORK	FROM	TO	KIND	WHEN DONE
RENEWAL	134.2	277	STEEL & CON.	
	324.2	343		

DIMENSIONS OF SHAFT		
FROM	TO	INSIDE
0	134.2	13'-0" to 14'-3"
134.2	307.4	9'-8" x 12'-6"
134	277	9'-8" x 12'-0"

BANGOR MINING CO.  
 BANGOR MINE  
 NO. 1 HOISTING SHAFT  
 SCALE 1"=20' JAN. 1, 1916