



Exploration plan submitted by Green Bridge Metals USA on April 22, 2026

[Summarized here by DNR Lands and Minerals Division](#)

Green Bridge Metals USA (GRBM) submitted an exploration plan to explore for metallic minerals in St. Louis County in an area approximately three and a half (3.5) miles southeast of Babbitt, Minnesota. Exploration plans are not a proposal to mine. The plan proposes drilling exploratory borings and conducting down-hole geophysical surveys. These parcels have been explored intermittently since 1957.

Encampment Minerals Inc. (Encampment) holds the state lease and designated GRBM as the operator for the proposed exploration activity. The DNR has approved the operating agreement between Encampment and GRBM.

If the proposal meets the requirements of applicable state laws, GRBM will have the right to explore the specified state lands under a nonferrous metallic mineral lease consistent with the exploration plan, any state-imposed conditions, and applicable laws and rules.

The proposed exploration covers state-administered school trust parcels located in the Rainy River Headwaters Watershed. This proposed plan is unrelated to the recent federal actions pertaining to federal mineral leases within this watershed.

Description of proposed exploration activity: GRBM proposes diamond drilling exploratory borings at up to twelve (12) drill sites. The proposal also includes conducting down-hole geophysical surveys. Any exploration in wetlands will occur when the ground is frozen or while utilizing best management practices (BMPs), such as composite mats, to minimize disturbances. GRBM will clearly post drill sites and active areas. All exploratory boring activities will follow regulations set by the Minnesota Department of Health.

Access: GRBM will use existing roads and trails as much as possible, but construction or improvement of temporary access trails is required to safely reach some drill sites. If access across non-state lands is required to reach the exploration area, GRBM will contact surface owners to establish acceptable access prior to beginning proposed activities.

Maps and Data Disclaimer: The State of Minnesota makes no representations or warranties express or implied, with respect to the use of the information contained herein regardless of its format or the means of its transmission. There is no guarantee or representation to the user as to the accuracy, currency, suitability, completeness, usefulness, or reliability of this information for any purpose. The user accepts the information "as is." The State of Minnesota assumes no responsibility for loss or damage incurred as a result of any user's reliance on this information. All maps, reports, data, and other information contained herein are protected by copyright. Permission is granted to copy and use the materials herein for any lawful noncommercial purpose. Any user of this information agrees not to transmit or provide access to all or any part of this information to another party unless the user shall include with the information a copy of this disclaimer.

DNR Summary Report for Green Bridge Metals USA Exploration Plan Submitted on April 22, 2026 and published by DNR Lands and Minerals Division on April 29, 2026.

State nonferrous metallic mineral leases: MM-10221

Expected time period: June 2026 through June 2027

Explorer contact: Justin Brown (920)-858-1535 or justin@greenbridgemetals.com

This report is posted on the [DNR's exploration plan webpage](#).

Maps and Data Disclaimer: The State of Minnesota makes no representations or warranties express or implied, with respect to the use of the information contained herein regardless of its format or the means of its transmission. There is no guarantee or representation to the user as to the accuracy, currency, suitability, completeness, usefulness, or reliability of this information for any purpose. The user accepts the information "as is." The State of Minnesota assumes no responsibility for loss or damage incurred as a result of any user's reliance on this information. All maps, reports, data, and other information contained herein are protected by copyright. Permission is granted to copy and use the materials herein for any lawful noncommercial purpose. Any user of this information agrees not to transmit or provide access to all or any part of this information to another party unless the user shall include with the information a copy of this disclaimer.

DNR Summary Report for Green Bridge Metals USA Exploration Plan Submitted on April 22, 2026 and published by DNR Lands and Minerals Division on April 29, 2026.

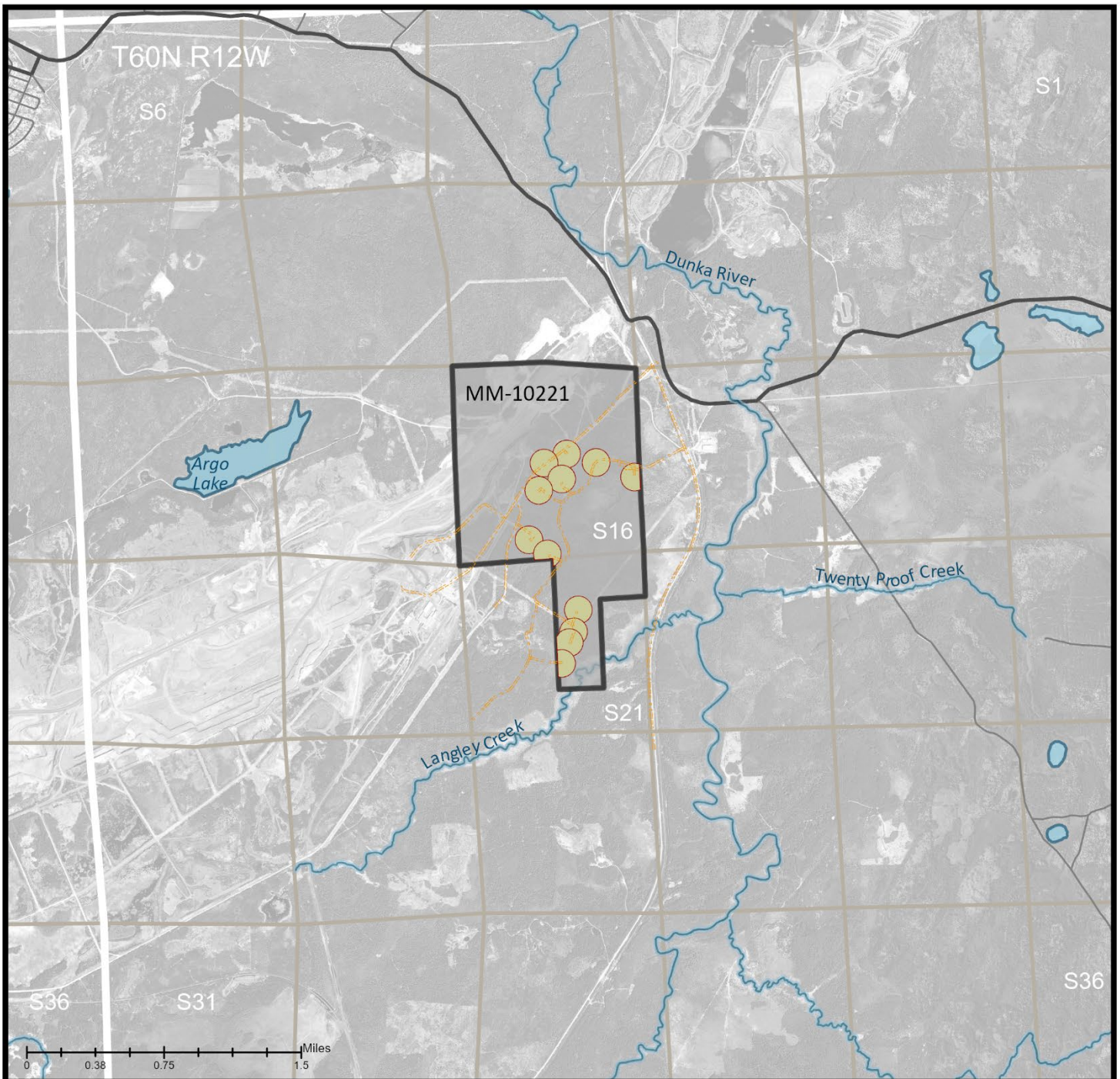







Figure 1. DNR Overview Map of Exploration Plan

-  State Nonferrous Metallic Mineral Leases
-  Proposed Exploratory Boring Sites
-  Access Trails
-  State, County, Local, Pit, and Forest Roads
-  Public Waters

Environmental features intersecting leases with proposed exploration are shown.

This map is for reference purposes only. The State of Minnesota's land and mineral interests GIS data including lease boundaries is mapped at 40 acre Public Land Survey resolution. GIS Data Sources: Exploration areas as provided by the Explorer. State minerals leases, public waters inventory, and PLS boundaries from DNR. Highways and roads from MnDOT. Aerial photography from Farm Service Agency.

