



Exploration plan submitted by Talon Nickel (USA) LLC on January 12, 2026

[Summarized here by DNR Lands and Minerals Division](#)

Talon Nickel (USA) LLC (Talon) proposes to continue exploration for metallic minerals in Aitkin and Carlton counties in an area approximately five and a half (5.5) miles north to seven (7) miles southeast of Tamarack, Minnesota (Figure 1). Talon and Kennecott Exploration Company (Kennecott) have explored this area intermittently since 2008.

The proposed plan is nearly identical to the exploration plans Talon submitted to the Minnesota Department of Natural Resources (DNR) in March 2023, March 2024, and March 2025, all of which received DNR authorization.

Kennecott holds the state leases and designated Talon as the operator for the proposed exploration activity. The DNR has approved the operating agreement between Kennecott and Talon.

If the proposal meets the requirements of applicable state laws and is authorized by the DNR, Talon will have the right to explore the specified state lands under a nonferrous metallic mineral lease consistent with the exploration plan, any conditions, and applicable laws and rules.

Description of proposed exploration activity: Talon proposes diamond drilling exploratory borings at up to twenty-four (24) drill sites. The proposal also includes conducting down-hole and ground geophysical surveys. Any exploration in wetlands will occur when the ground is frozen or while utilizing best management practices (BMPs), such as composite mats, to minimize disturbances. Talon will clearly post drill sites and active areas. All exploratory boring activity will follow regulations set by the Minnesota Department of Health.

Access: Talon will use existing roads and trails as much as possible, but construction or improvement of temporary access trails may be required to safely reach some drill sites. To minimize disturbances, Talon may use composite mats to stabilize trails and drill sites. If access across non-state lands is required to reach the exploration area, Talon will contact surface owners to establish acceptable access prior to beginning proposed activities.

Maps and Data Disclaimer: The State of Minnesota makes no representations or warranties express or implied, with respect to the use of the information contained herein regardless of its format or the means of its transmission. There is no guarantee or representation to the user as to the accuracy, currency, suitability, completeness, usefulness, or reliability of this information for any purpose. The user accepts the information "as is." The State of Minnesota assumes no responsibility for loss or damage incurred as a result of any user's reliance on this information. All maps, reports, data, and other information contained herein are protected by copyright. Permission is granted to copy and use the materials herein for any lawful noncommercial purpose. Any user of this information agrees not to transmit or provide access to all or any part of this information to another party unless the user shall include with the information a copy of this disclaimer.

DNR Summary Report for Talon Nickel (USA) LLC Exploration Plan Submitted on January 12, 2026 and published by DNR Lands and Minerals Division on January 20, 2026.

State nonferrous metallic mineral leases:

MLMB200003	MM-9769-P	MM-9808	MM-9853-N	MM-10005-N	MM-10203-N
MLMN200001	MM-9770-P	MM-9809	MM-9854-N	MM-10007-N	MM-10205-N
MLMN200029	MM-9771-P	MM-9810	MM-9855-N	MM-10008-N	MM-10252-N
MM-9765-P	MM-9772-P	MM-9811	MM-9856-N	MM-10009-N	MM-10253-N
MM-9766-P	MM-9773-P	MM-9849-N	MM-10002-N	MM-10010-N	MM-10315
MM-9767-P	MM-9805	MM-9850-N	MM-10003-N	MM-10126-N	MM-10346
MM-9768-P	MM-9806	MM-9852-N	MM-10004-N	MM-10202-N	MM-10349

Expected time period: upon approval by DNR through April 30, 2027

Explorer contact: Brian Goldner (218) 768-3292 or goldner@talonmetals.com

This report is posted on the [DNR's exploration plan webpage](#).

Maps and Data Disclaimer: The State of Minnesota makes no representations or warranties express or implied, with respect to the use of the information contained herein regardless of its format or the means of its transmission. There is no guarantee or representation to the user as to the accuracy, currency, suitability, completeness, usefulness, or reliability of this information for any purpose. The user accepts the information "as is." The State of Minnesota assumes no responsibility for loss or damage incurred as a result of any user's reliance on this information. All maps, reports, data, and other information contained herein are protected by copyright. Permission is granted to copy and use the materials herein for any lawful noncommercial purpose. Any user of this information agrees not to transmit or provide access to all or any part of this information to another party unless the user shall include with the information a copy of this disclaimer.

DNR Summary Report for Talon Nickel (USA) LLC Exploration Plan Submitted on January 12, 2026 and published by DNR Lands and Minerals Division on January 20, 2026.

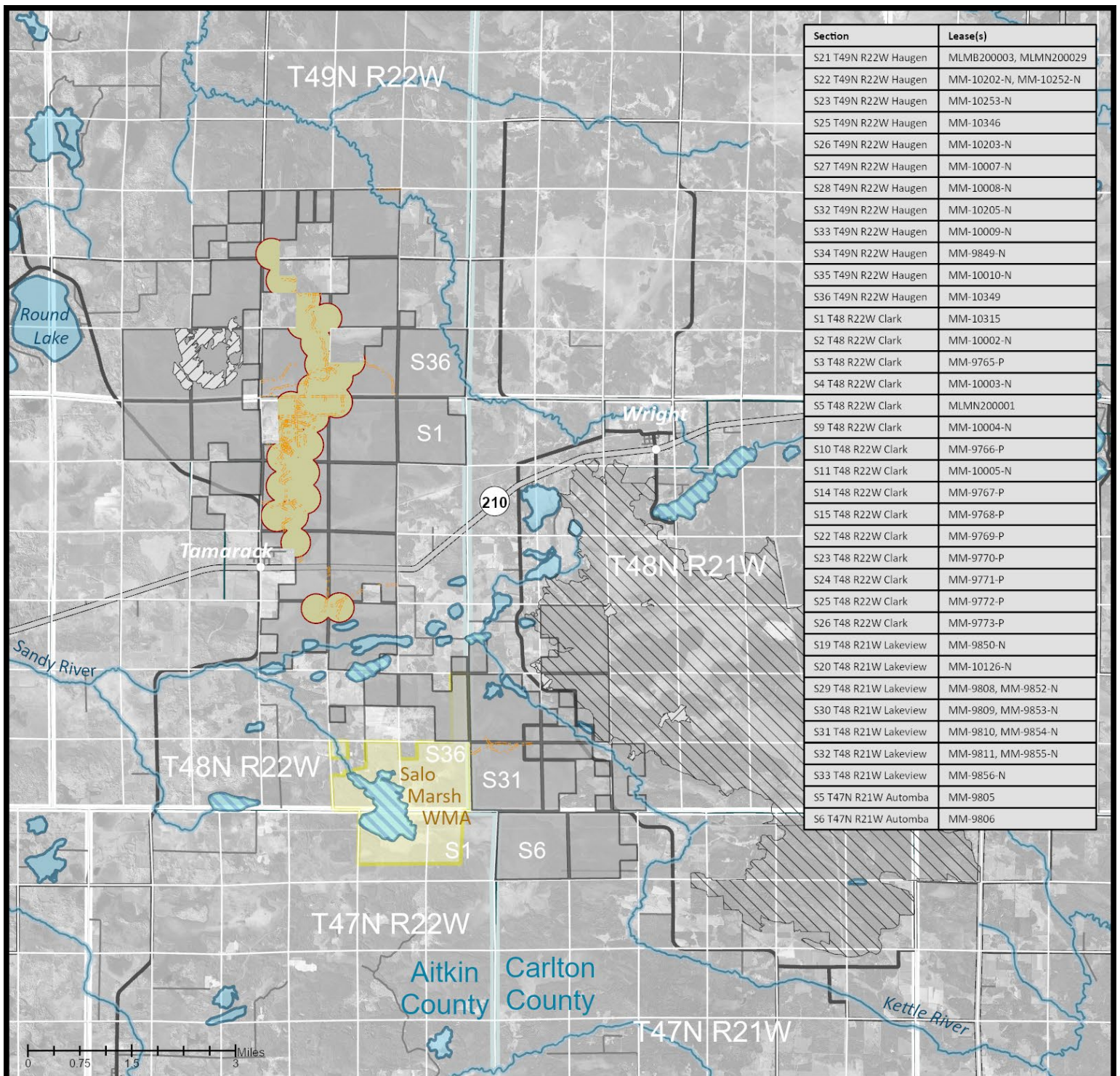


Figure 1. DNR Overview Map of Exploration Plan

- State Nonferrous Metallic Mineral Leases
- Proposed Exploratory Boring Sites
- Native Plant Communities Potential S2
- MBS High Biodiversity Significance

Environmental features intersecting leases with proposed exploration are shown.

- Access Trails
- State, County, Local, Pit, and Forest Roads
- Public Waters
- Wild Rice Waters

This map is for reference purposes only. The State of Minnesota's land and mineral interests GIS data including lease boundaries is mapped at 40 acre Public Land Survey resolution. GIS Data Sources: Exploration areas as provided by the Explorer. State minerals leases, public waters inventory, and PLS boundaries from DNR. Highways and roads from MnDOT. Aerial photography from Farm Service Agency.

Exploration Plan Area

