



Exploration plan submitted by Encampment Inc. on March 29, 2024

[Summarized here by DNR Lands and Minerals Division](#)

Encampment Minerals Inc. (Encampment) proposes exploring for metallic minerals in St. Louis County in an area six miles northeast of Hoyt Lakes, Minnesota (Figure 1). Encampment has explored this area intermittently since 2008.

If the proposal meets the requirements of applicable state laws and is approved by the DNR, Encampment will have the right to explore the specified state lands under a nonferrous metallic mineral lease consistent with the exploration plan, any conditions, and applicable laws and rules.

Description of proposed exploration activity: Encampment proposes diamond drilling exploratory borings at one site and conducting down-hole geophysical surveys. Any exploration in wetlands will occur when the ground is frozen. Encampment will clearly post drill sites and active survey areas. All exploratory boring activity will follow regulations set by Minnesota Department of Health.

Access: Encampment will use existing roads and trails as much as possible, but construction or improvement of temporary access trails may be required to safely reach some drill sites. If access across non-state lands is required to reach the exploration area, Encampment will contact surface owners to establish acceptable access prior to beginning proposed activities.

State nonferrous metallic mineral leases: MM-10210-N

Expected time period: December 2024 through April 30, 2025

Explorer contact: Harry Noyes, (303) 619-0311 or chathl@aol.com

Ted Dematties, (763) 232-8281 or tdematties@aol.com

This report is posted on the [DNR's exploration plan webpage](#).

Maps and Data Disclaimer: The State of Minnesota makes no representations or warranties express or implied, with respect to the use of the information contained herein regardless of its format or the means of its transmission. There is no guarantee or representation to the user as to the accuracy, currency, suitability, completeness, usefulness, or reliability of this information for any purpose. The user accepts the information "as is." The State of Minnesota assumes no responsibility for loss or damage incurred as a result of any user's reliance on this information. All maps, reports, data, and other information contained herein are protected by copyright. Permission is granted to copy and use the materials herein for any lawful noncommercial purpose. Any user of this information agrees not to transmit or provide access to all or any part of this information to another party unless the user shall include with the information a copy of this disclaimer.

DNR Summary Report for Encampment Minerals Inc. Exploration Plan Submitted on March 29, 2024 and published by DNR Lands and Minerals Division on April 5, 2024.

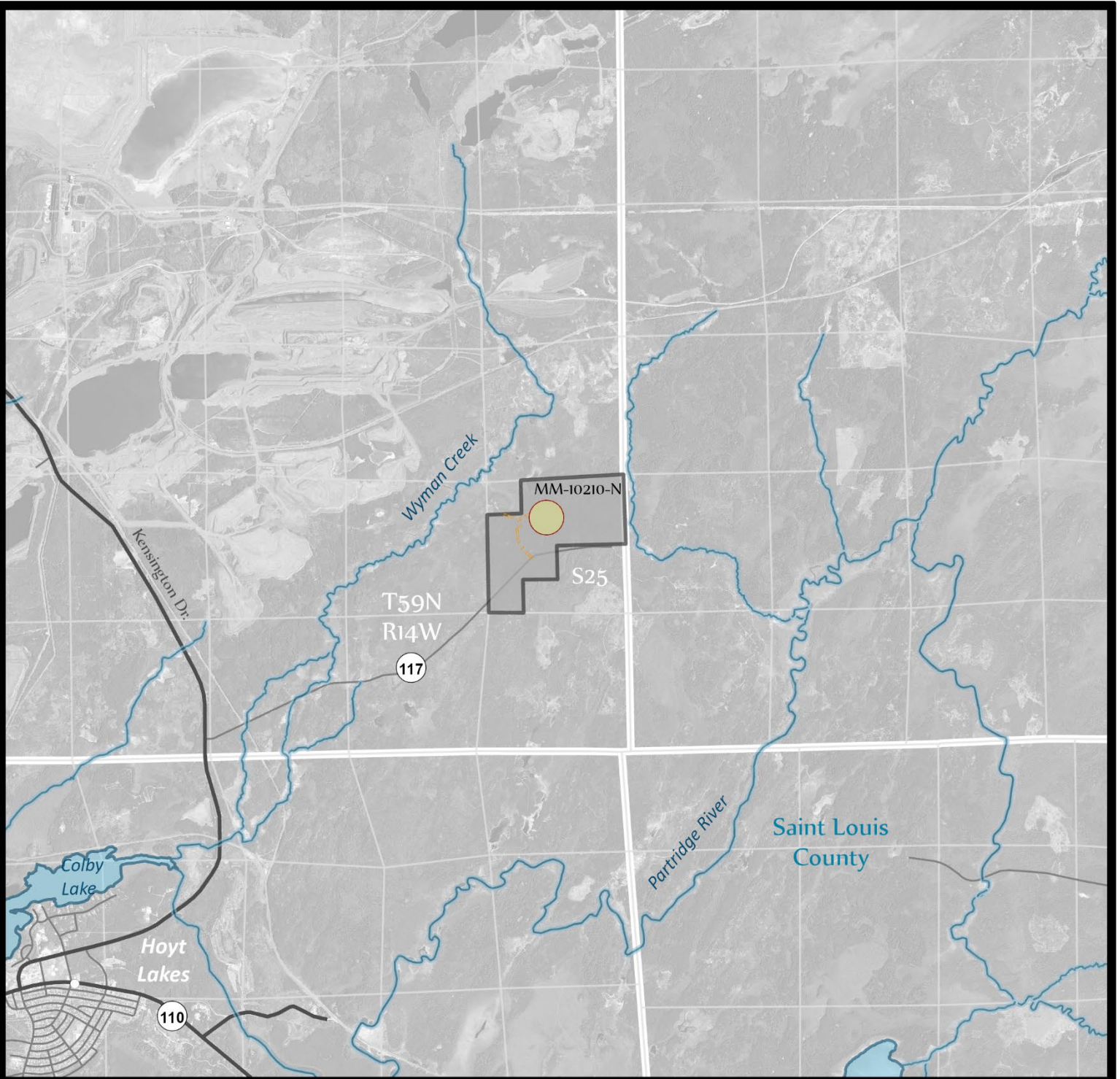
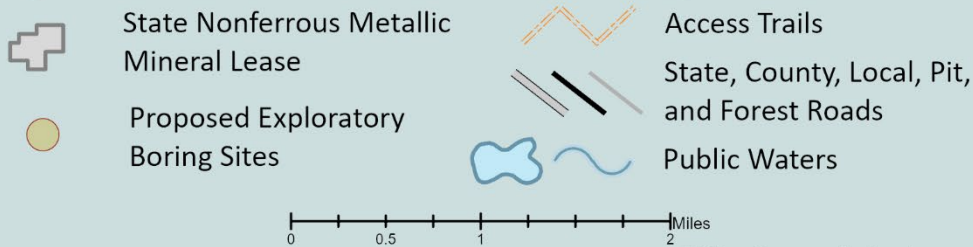


Figure 1. DNR Overview Map of Exploration Plan



This map is for reference purposes only. The State of Minnesota's land and mineral interests GIS data including lease boundaries is mapped at 40 acre Public Land Survey resolution.

GIS Data Sources - Exploration areas as provided by the Explorer. State minerals leases, public waters inventory, and PLS boundaries from DNR. Highways and roads from MnDOT. Aerial photography from Farm Service Agency.

