



Exploration plan submitted by Talon Nickel (USA) LLC on September 8, 2023

[Summarized here by DNR Lands and Minerals Division](#)

Talon Nickel (USA) LLC (Talon) proposes exploring for metallic minerals in Carlton County in an area three to six miles southeast of Tamarack, Minnesota (Figure 1). Talon and Kennecott Exploration Company (Kennecott) have explored this area intermittently since 2008.

Kennecott, which designated Talon as the operator for the proposed exploration activity, holds the state leases. The Minnesota Department of Natural Resources (DNR) has approved the operating agreement between Kennecott and Talon.

If approved by DNR, Talon will have the right to explore the specified state lands under a nonferrous metallic mineral lease consistent with the exploration plan, any conditions, and applicable laws and rules.

Description of exploration activity: Talon proposes diamond or rotary drilling exploratory borings at up to four drill sites and conducting down-hole and ground geophysical surveys. Talon will clearly post drill sites and active survey areas. All exploratory boring activity will follow regulations set by Minnesota Department of Health.

Access: Talon will use existing roads and trails as much as possible, but construction or improvement of temporary access trails may be required to safely reach some drill sites. To minimize disturbances, Talon may use composite mats to stabilize trails and drill sites. If access across non-state lands is required to reach the exploration area, Talon will contact surface owners to establish acceptable access prior to beginning proposed activities.

State nonferrous metallic mineral leases: MM-9808, MM-9809, MM-9810, MM-9811, MM-9852-N, MM-9853-N, MM-9854-N, and MM-9855-N

Expected time period: upon approval by DNR through September 1, 2024

Explorer contact: Brian Goldner (218) 768-3292 or goldner@talonmetals.com

This report is posted on the [DNR's exploration plan webpage](#).

Maps and Data Disclaimer: The State of Minnesota makes no representations or warranties express or implied, with respect to the use of the information contained herein regardless of its format or the means of its transmission. There is no guarantee or representation to the user as to the accuracy, currency, suitability, completeness, usefulness, or reliability of this information for any purpose. The user accepts the information "as is." The State of Minnesota assumes no responsibility for loss or damage incurred as a result of any user's reliance on this information. All maps, reports, data, and other information contained herein are protected by copyright. Permission is granted to copy and use the materials herein for any lawful noncommercial purpose. Any user of this information agrees not to transmit or provide access to all or any part of this information to another party unless the user shall include with the information a copy of this disclaimer.

DNR Summary Report for Talon Nickel (USA) LLC Exploration Plan Submitted on September 8, 2023, and published by DNR Lands and Minerals Division on September 15, 2023.

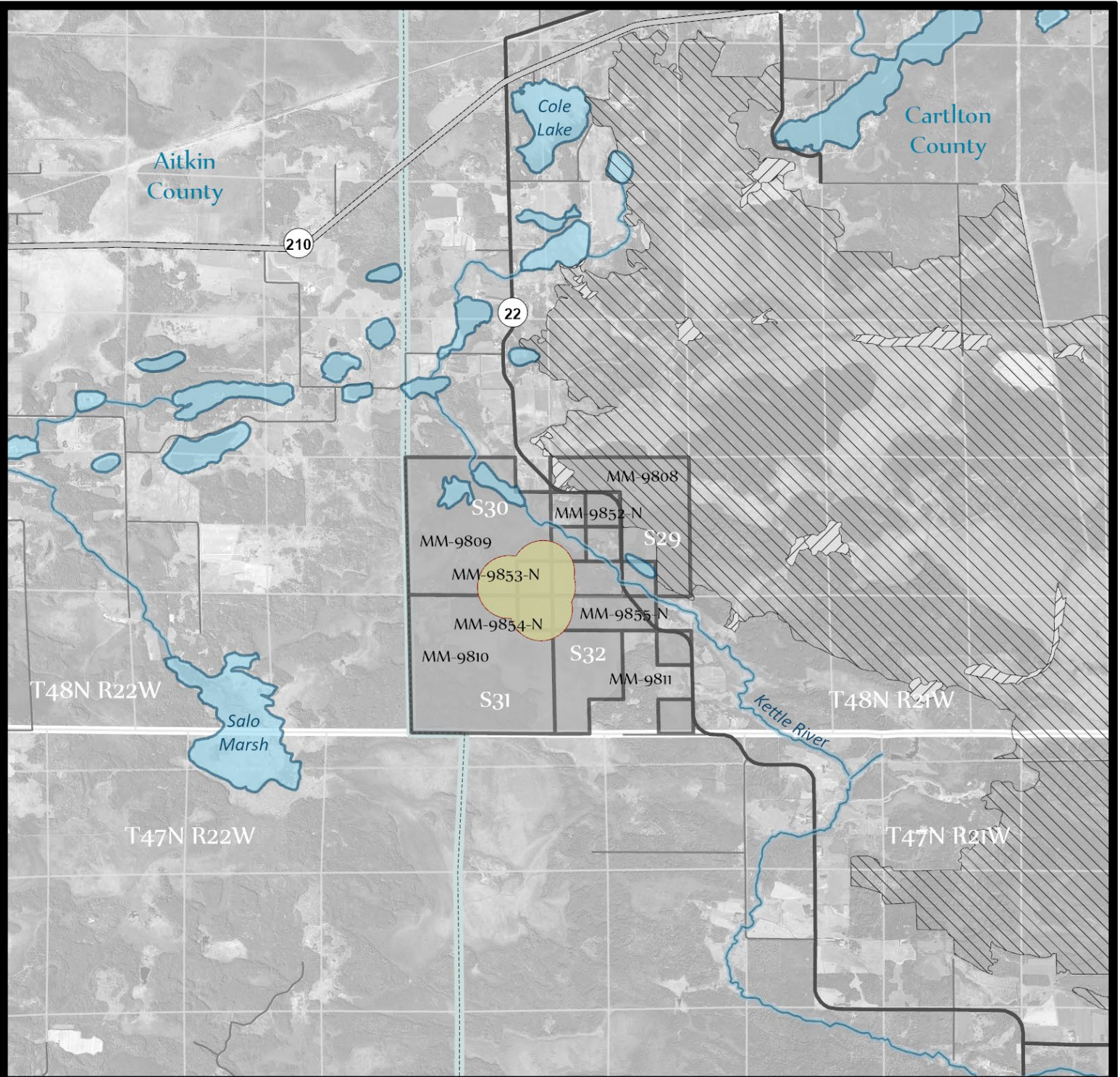








Figure 1. DNR Overview Map of Exploration Plan

-  State Nonferrous Metallic Mineral Leases
-  Proposed Exploratory Boring Sites
-  MBS High Biodiversity Significance
-  State, County, Local, Pit, and Forest Roads
-  Public Waters
-  Native Plant Communities Potential S2

0 0.5 1 2 Miles

This map is for reference purposes only. The State of Minnesota's land and mineral interests GIS data including lease boundaries is mapped at 40 acre Public Land Survey resolution.

GIS Data Sources - Exploration areas as provided by the Explorer. State minerals leases, public waters inventory, and PLS boundaries from DNR. Highways and roads from MnDOT. Aerial photography from Farm Service Agency.

Exploration Plan Area

