



Exploration Plan on State Nonferrous Metallic Minerals Leases

Submitted by Encampment Minerals, Inc., on December 02, 2022 and summarized here by DNR Lands and Minerals Division

Exploration summary: Encampment Minerals, Inc. (Encampment) submitted a proposed exploration plan to continue exploring for metallic mineral deposits in St. Louis County. Encampment proposes to explore on leased state mineral rights in an area about five miles south of Hoyt Lakes, Minnesota (Figure 1). Encampment has intermittently explored this area of St. Louis County since 2009.

Encampment's exploration plan proposes conducting borehole pulse electromagnetic geophysical surveys at two drill sites drilled during previous exploration. Encampment proposes to place up to five wire loops in an area surrounding the drill sites. The site crew will place wire loops by hand. No line or brush cutting is required. The proposed plan states that explorers will only transmit electromagnetic pulses with crew on site.

Encampment will post warning signs at drill sites and in areas where the deployed wiring may cross access routes. When Encampment completes the proposed exploration activity, the site crew will reseal exploratory borings following regulations set by Minnesota's Department of Health.

Upon DNR approval, Encampment has the right to explore state-owned lands consistent with the exploration plan, any stipulations, and applicable laws and rules.

State nonferrous metallic mineral lease numbers: MM-10256-N, MM-10207-N, and MM-10208-N

Public Land Survey location: Section 3 and 4, T57N R14W

Types of exploration activity: Geophysical survey

Expected time of activity: January and February 2023

Access: Encampment will access the leased lands by public roads, forest roads, and other existing access routes. Encampment will not clear new routes on state land.

Surface ownership: Geophysical surveys are proposed on state-owned lands. Encampment may need to use existing access on non-state lands to reach some exploration sites. The exploration plan states that surface owners will be notified for access to the property. Upon DNR approval, which may include stipulations, Encampment may proceed as described in its exploration plan on state-owned surface lands.

Explorer contact: Ted DeMatties, 763-232-8281 or tdematties@aol.com

This report is posted on the [DNR's exploration plan webpage](#).

Maps and Data Disclaimer

The State of Minnesota makes no representations or warranties express or implied, with respect to the use of the information contained herein regardless of its format or the means of its transmission. There is no guarantee or representation to the user as to the accuracy, currency, suitability, completeness, usefulness, or reliability of this information for any purpose. The user accepts the information "as is." The State of Minnesota assumes no responsibility for loss or damage incurred as a result of any user's reliance on this information. All maps, reports, data, and other information contained herein are protected by copyright. Permission is granted to copy and use the materials herein for any lawful noncommercial purpose. Any user of this information agrees not to transmit or provide access to all or any part of this information to another party unless the user shall include with the information a copy of this disclaimer.

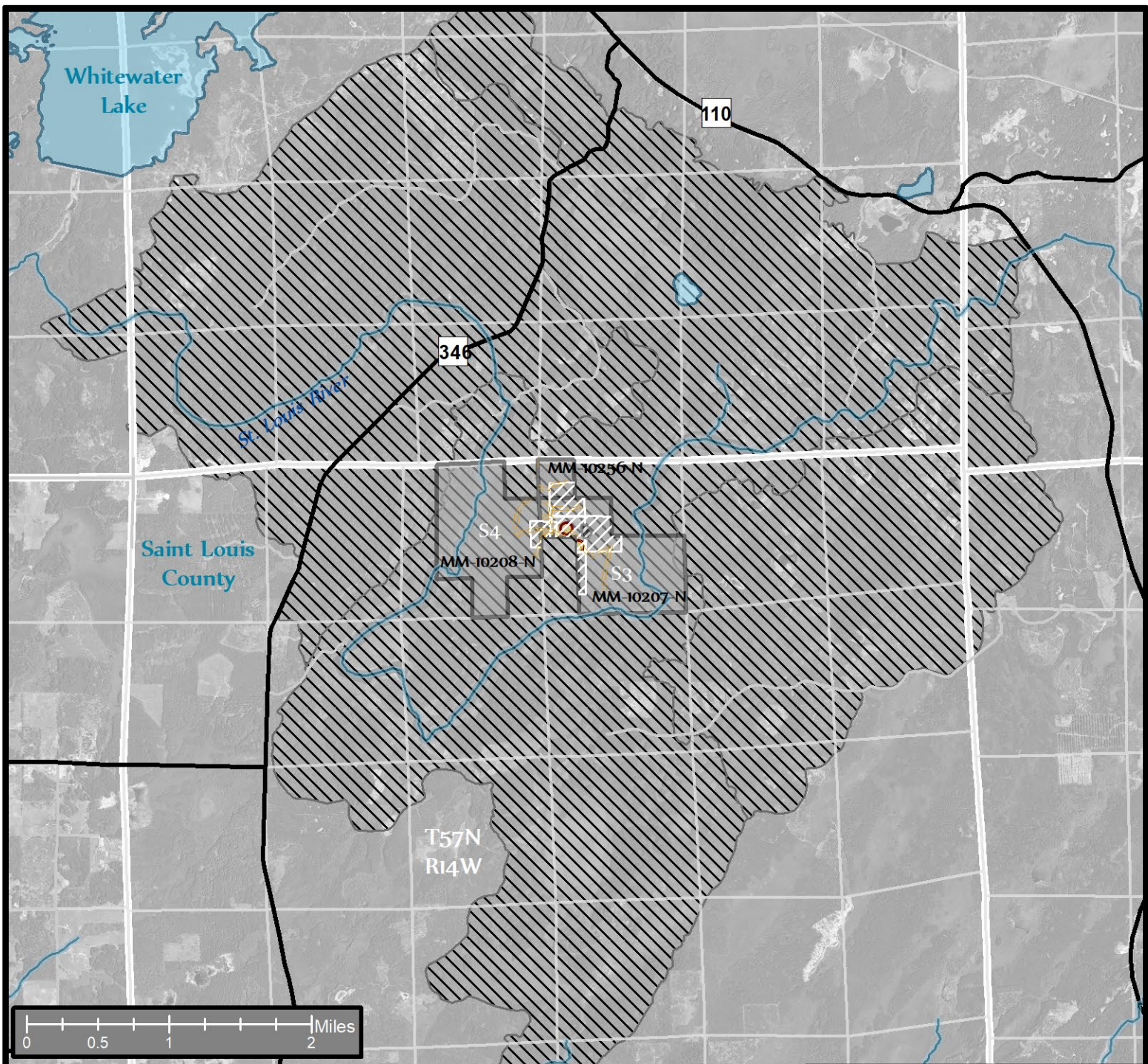


Figure 1. DNR Summary Map of Exploration Plan

