



Exploration Plan on State Nonferrous Metallic Minerals Leases

Submitted by Teck American Incorporated, on December 2, 2021 and summarized here by the DNR Division of Lands and Minerals

Exploration summary: Teck American Incorporated (Teck) submitted a proposed exploration plan to continue exploration for metallic mineral deposits on leased state mineral rights in an area about five (5) miles southeast of Babbitt, Minnesota (Figure 1). Teck has drilled in this area of St. Louis County since 2007.

Over the next year, Teck plans to drill exploratory borings at four sites and environmental wells at two sites using sonic, air rotary, reverse circulation, and diamond core methods. The plan states that Teck will drill and seal the borings and wells according to regulations set by the Minnesota Department of Health.

Access across and drilling in wetlands will occur in winter; drilling on upland sites may occur at various times throughout the year. New access trails are proposed to reach some drill sites; some of which may be improved to allow year-round access.

State nonferrous metallic mineral lease numbers: MM-9831-N

Public Land Survey location: Sections 28, 29, 30, 31, and 32 of T60N R12W

Types of exploration activity: Exploratory borings and environmental wells

Expected time of activity: Intermittently from January 2022 through March 2023

Access: Teck will access the leased lands by public roads, forest roads, and other existing access routes. Teck will clear new access routes on state land.

Surface ownership: Exploration is proposed on state-owned lands only. Teck may need to use existing access on non-state lands to reach some exploration sites. The exploration plan states that surface owners will be notified for access to the property. Upon DNR approval, which may include stipulations, the Teck may proceed as described in its exploration plan on state-owned surface lands.

Explorer contact: Leslie Olmstead, (509) 623-4572 or Leslie.Olmstead@teck.com

This report is posted on the [DNR's exploration plan webpage](#).

Maps and Data Disclaimer

The State of Minnesota makes no representations or warranties express or implied, with respect to the use of the information contained herein regardless of its format or the means of its transmission. There is no guarantee or representation to the user as to the accuracy, currency, suitability, completeness, usefulness, or reliability of this information for any purpose. The user accepts the information "as is." The State of Minnesota assumes no responsibility for loss or damage incurred as a result of any user's reliance on this information. All maps, reports, data, and other information contained herein are protected by copyright. Permission is granted to copy and use the materials herein for any lawful noncommercial purpose. Any user of this information agrees not to transmit or provide access to all or any part of this information to another party unless the user shall include with the information a copy of this disclaimer.

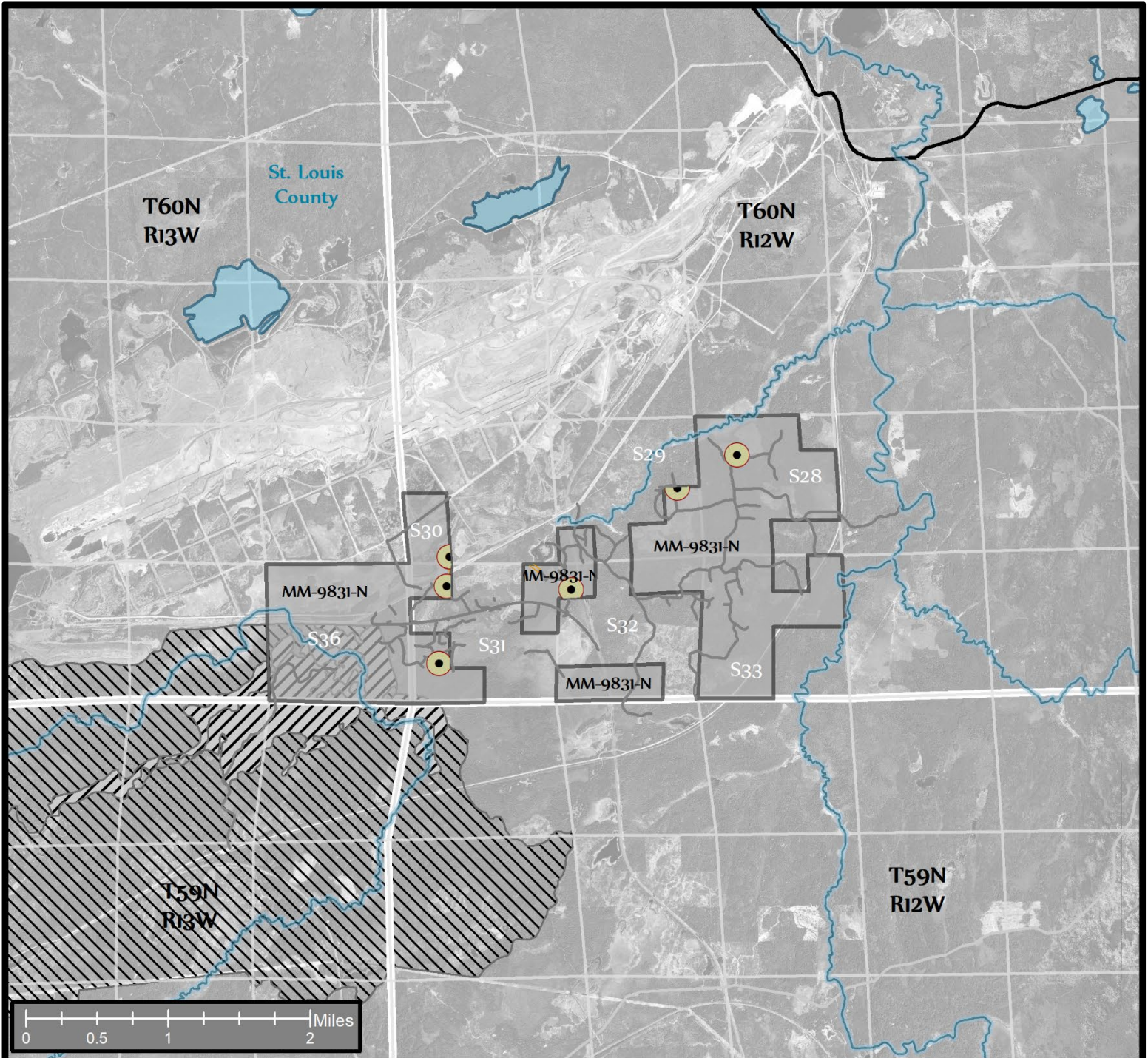








Figure 1. DNR Summary Map of Exploration Plan

- | | | | |
|---|--|---|---|
|  | Proposed Exploratory Boring and Environmental Well Sites |  | State, County, Local, Pit, and Forest Roads |
|  | State Nonferrous Metallic Mineral Leases |  | Access Trails |
|  | Native Plant Communities |  | Public Waters |
|  | Potential S2 | | |
|  | MBS High Biodiversity Significance | | |

This map is for reference purposes only. Environmental features intersecting proposed exploration leases are shown. The State of Minnesota's land and mineral interests including lease boundaries are mapped at 40 acre Public Land Survey resolution.

Data Sources: Exploration areas as described by the Explorer. State minerals leases, public waters inventory, special features, and PLS boundaries from DNR. Highways and roads from MnDOT. Aerial photography from Farm Service Agency.

