



# Minerals Exploration Plan on State Nonferrous Metallic Minerals Leases

Submitted by Vermillion Gold Inc. on October 5, 2021 and summarized  
here by DNR Division of Lands and Minerals

**Exploration summary:** Vermillion Gold Inc. (VGI) submitted a proposed plan to explore for metallic mineral deposits on leased state mineral rights in St. Louis County. The exploration activities will occur on leased state mineral rights between the cities of Virginia and Gilbert, Minnesota (Figure 1). VGI has explored for gold in this area since 2007.

Beginning this fall, VGI plans to drill exploratory borings at six drill sites using the diamond core drilling method. All proposed drill sites are on uplands, according to the exploration plan. The plan also states VGI will seal the borings following regulations set by the Minnesota Department of Health.

**Exploration is proposed on the following State nonferrous metallic minerals leases:** MM-10372-N, MM-10180, and MM-10185

**Public Land Survey location:** Part or all of Sections 14, 15, and 22 of T58N R17W as shown on Figure 1

**Exploration method(s):** Diamond core drilling

**When exploration is expected to occur:** Upon authorization by DNR through October 2022

**Access:** VGI will access the leased lands by existing public and forest road network, and other existing access routes. New temporary trails are proposed to reach some drill sites. The new trails are short, so they do not occur beyond the dots that represent drill sites on Figure 1.

**Surface ownership:** Exploration activity proposed may occur on DNR lands, other publicly administered lands, or private lands. Upon DNR approval, VGI has the right to explore state-owned lands consistent with the exploration plan, any stipulations, and applicable laws and rules.

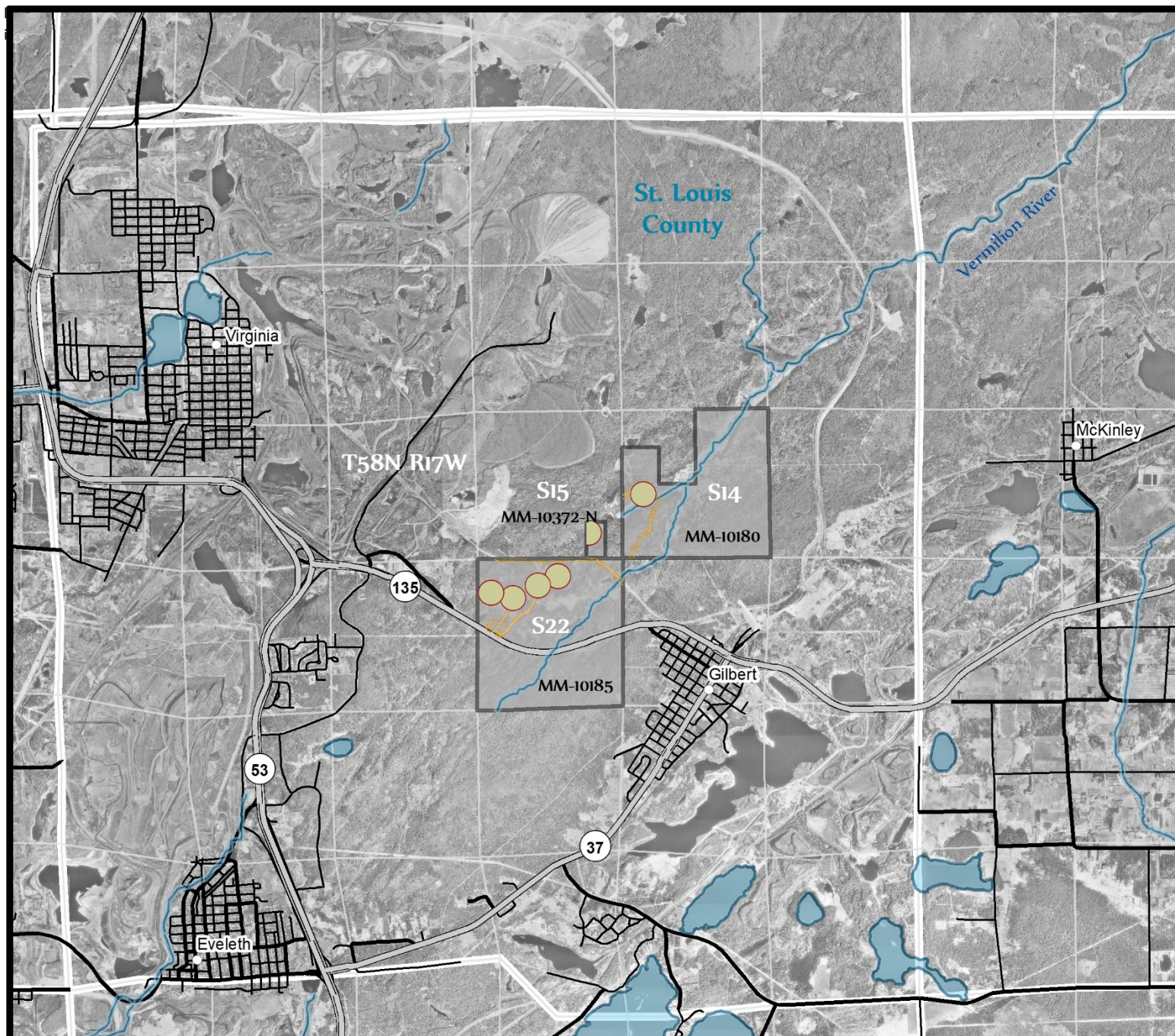
**Explorer contact:** Kate Lehmann, (612) 338-5584 or [kate@ncmvgeo.com](mailto:kate@ncmvgeo.com)

This report is posted on the [DNR's exploration plan webpage](#).

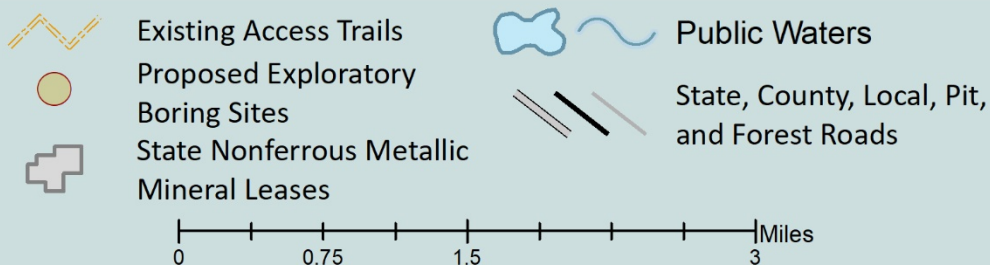
**Maps and Data Disclaimer**

The State of Minnesota makes no representations or warranties express or implied, with respect to the use of the information contained herein regardless of its format or the means of its transmission. There is no guarantee or representation to the user as to the accuracy, currency, suitability, completeness, usefulness, or reliability of this information for any purpose. The user accepts the information "as is." The State of Minnesota assumes no responsibility for loss or damage incurred as a result of any user's reliance on this information. All maps, reports, data, and other information contained herein are protected by copyright. Permission is granted to copy and use the materials herein for any lawful noncommercial purpose. Any user of this information agrees not to transmit or provide access to all or any part of this information to another party unless the user shall include with the information a copy of this disclaimer.





**Figure 1. DNR Overview Map of Exploration Plan**



This map is for reference purposes only. The State of Minnesota's land and mineral interests GIS data including lease boundaries is mapped at 40 acre Public Land Survey resolution.

GIS Data Sources - Exploration areas as provided by the Explorer. State minerals leases, public waters inventory, and PLS boundaries from DNR. Highways and roads from MnDOT. Aerial photography from Farm Service Agency.

