



# Exploration Plan on State Nonferrous Metallic Minerals Leases

Submitted by Talon Nickel (USA) LLC on September 3, 2021 and summarized here by the DNR Division of Lands and Minerals

**Exploration summary:** Talon Nickel (USA) LLC (Talon) submitted a proposed plan to explore for metallic mineral deposits in Aitkin and Carlton Counties. The exploration activities will occur on leased state mineral rights across an area from about three miles north to about seven miles southeast of Tamarack, Minnesota. Kennecott Exploration Company (Kennecott) and Talon have explored this area since the early 2000s.

Talon's exploration plan proposes new environmental wells, conducting down-hole geophysical surveys in temporarily sealed borings, and conducting ground geophysical surveys.

Talon plans to use rotosonic drill rigs to install environmental wells on up to 12 drill pads, following regulations set by the Department of Health. Talon may install multiple wells on each drill pad. New trail spurs from existing access may be built to reach some drill pads, the plan states.

The down-hole geophysical surveys proposed by Talon are seismic tomography, borehole electromagnetic, and physical property surveys. In the event a boring is blocked at depth, Talon proposes to mobilize a drill rig to clear the blockage. Talon proposes using existing trails to access borings; Talon will place signs when conducting down-hole and ground geophysical surveys.

The ground geophysical surveys proposed by Talon are magneto-tellurics and electromagnetic. Talon proposes to conduct these surveys on foot. Talon proposes to cut small amounts of brush, as needed, to place backpack-sized survey equipment; Talon will not cut lines or grids.

**Exploration is proposed on the following State nonferrous metallic mineral leases:** MM-9765-P, MM-9766-P, MM-9767-P, MM-9768-P, MM-9769-P, MM-9770-P, MM-9771-P, MM-9772-P, MM-9773-P, MM-9774-P, MM-9805, MM-9806, MM-9807, MM-9808, MM-9809, MM-9810, MM-9811, MM-9849-N, MM-9850-N, MM-9851-N, MM-9852-N, MM-9853-N, MM-9854-N, MM-9855-N, MM-9856-N, MM-10002-N, MM-10006-N, MM-10126-N, MM-10176, MM-10318, MM-10319, MM-10325, MLMN200009, and MLMN200019

**Public Land Survey location:** Sections 4, 5, and 6 of T47N R21W; Section 1 of T47N R22W; Sections 19, 20, 21, 28, 29, 30, 31, 32, and 33 of T48N R21W; Sections 2, 3, 10, 12, 13, 14, 15, 16, 22, 23, 24, 25, 26, 27, and 36 of T48N R22W; and Section 34 of T49N R22W.

**Types of exploration activity:** Environmental wells, ground and down-hole geophysics

**Expected time period of activity:** Upon approval through approximately October 1, 2022

**Access:** Talon will use public roads, forest roads, other existing access routes, and clear new access spurs where needed.

**Surface ownership:** Exploration may occur on DNR owned lands, other publicly administered lands, or on private lands. Talon is responsible for gaining access to private lands and lands not leased to Talon.

Upon DNR approval, Talon has the right to explore state-owned lands consistent with the exploration plan, any stipulations, and applicable laws and rules.

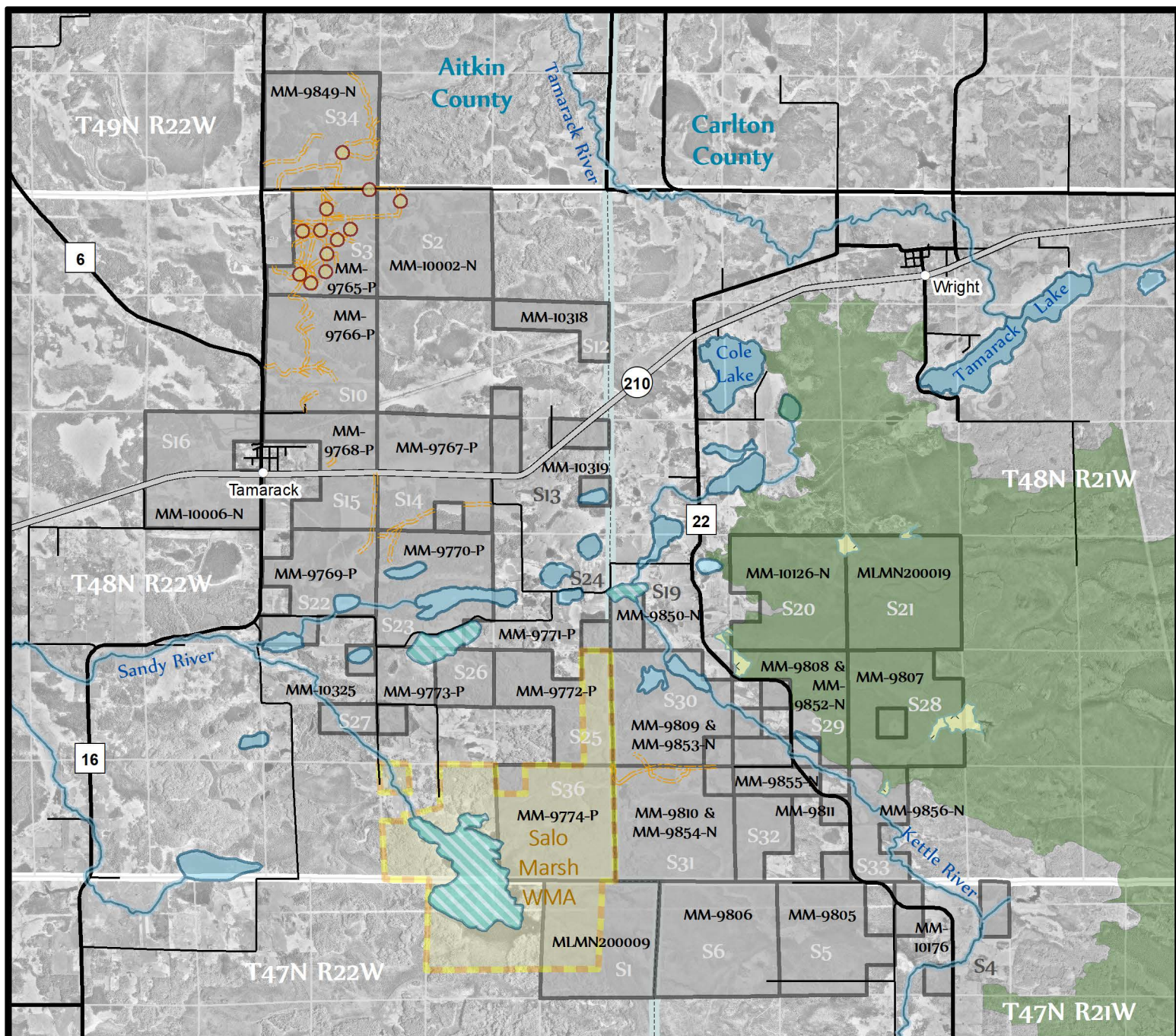
**Explorer contact:** Brian Goldner, (218) 768-3292 or [Goldner@Talonmetals.com](mailto:Goldner@Talonmetals.com)

This report is posted on the [DNR's exploration plan webpage](#).

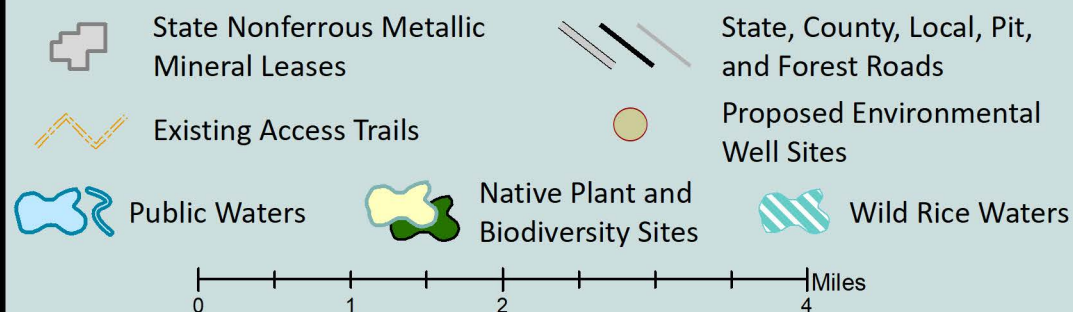
#### **Maps and Data Disclaimer**

The State of Minnesota makes no representations or warranties express or implied, with respect to the use of the information contained herein regardless of its format or the means of its transmission. There is no guarantee or representation to the user as to the accuracy, currency, suitability, completeness, usefulness, or reliability of this information for any purpose. The user accepts the information "as is." The State of Minnesota assumes no responsibility for loss or damage incurred as a result of any user's reliance on this information. All maps, reports, data, and other information contained herein are protected by copyright. Permission is granted to copy and use the materials herein for any lawful noncommercial purpose. Any user of this information agrees not to transmit or provide access to all or any part of this information to another party unless the user shall include with the information a copy of this disclaimer.





**Figure 1. DNR Overview Map of Exploration Plan**



This map is for reference purposes only. The State of Minnesota's land and mineral interests GIS data including lease boundaries is mapped at 40 acre Public Land Survey resolution.

GIS Data Sources - Exploration areas as provided by the Explorer. State minerals leases, public waters inventory, and PLS boundaries from DNR. Highways and roads from MnDOT. Aerial photography from Farm Service Agency.

**Exploration Plan Area**

